

4

3

2

1

THIS DRAWING IS UNPUBLISHED.

RELEASED FOR PUBLICATION

© COPYRIGHT

ALL RIGHTS RESERVED.

LOC

DIST

REVISIONS

P	LTR	DESCRIPTION	DATE	DWN	APVD
	A1	ECR-14-002912	26FEB2014	GK	HMR

REPLACED BY OCEAN STYLE APPLICATOR PART
NUMBER 2150261-1

FOR REPLACEMENT PARTS FOR APPLICATOR 1339588
REFER TO ADDITIONAL PAGE(S). SPARE PARTS KIT (IF LISTED)
WILL REMAIN AVAILABLE.

THE REPLACEMENT OCEAN STYLE APPLICATOR HAS THE
SAME TERMINATOR/PRESS INTERFACE AS APPLICATOR
1339588

THIS DRAWING IS A CONTROLLED DOCUMENT.		DWN	GOPALAKRISHNA HV			
		CHK	RAGHAVENDRA			
		APVD	RAGHAVENDRA			
		PRODUCT SPEC				
		APPLICATION SPEC				
		WEIGHT				
		CUSTOMER DRAWING		SCALE	SHEET 1 OF 2	
				REV	A1	

TE Connectivity			
END FEED HD-I APPLICATOR			
SIZE	CAGE CODE	DRAWING NO	RESTRICTED TO
A3		©- 1339588	

DIMENSIONS:	TOLERANCES UNLESS OTHERWISE SPECIFIED:
	0 PLC ± 1 PLC ± 2 PLC ± 3 PLC ± 4 PLC ± ANGLES ± FINISH
MATERIAL	

THIS DRAWING IS A CONTROLLED DOCUMENT.

LAYOUT
L1339588

SET UP GAGE
458638-3

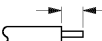




2000

RELEASED FOR PUBLICATION
BY AMP INCORPORATED. ALL RIGHTS RESERVED.

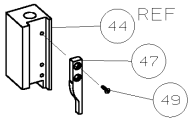
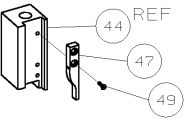
LOC
A
DIST
66

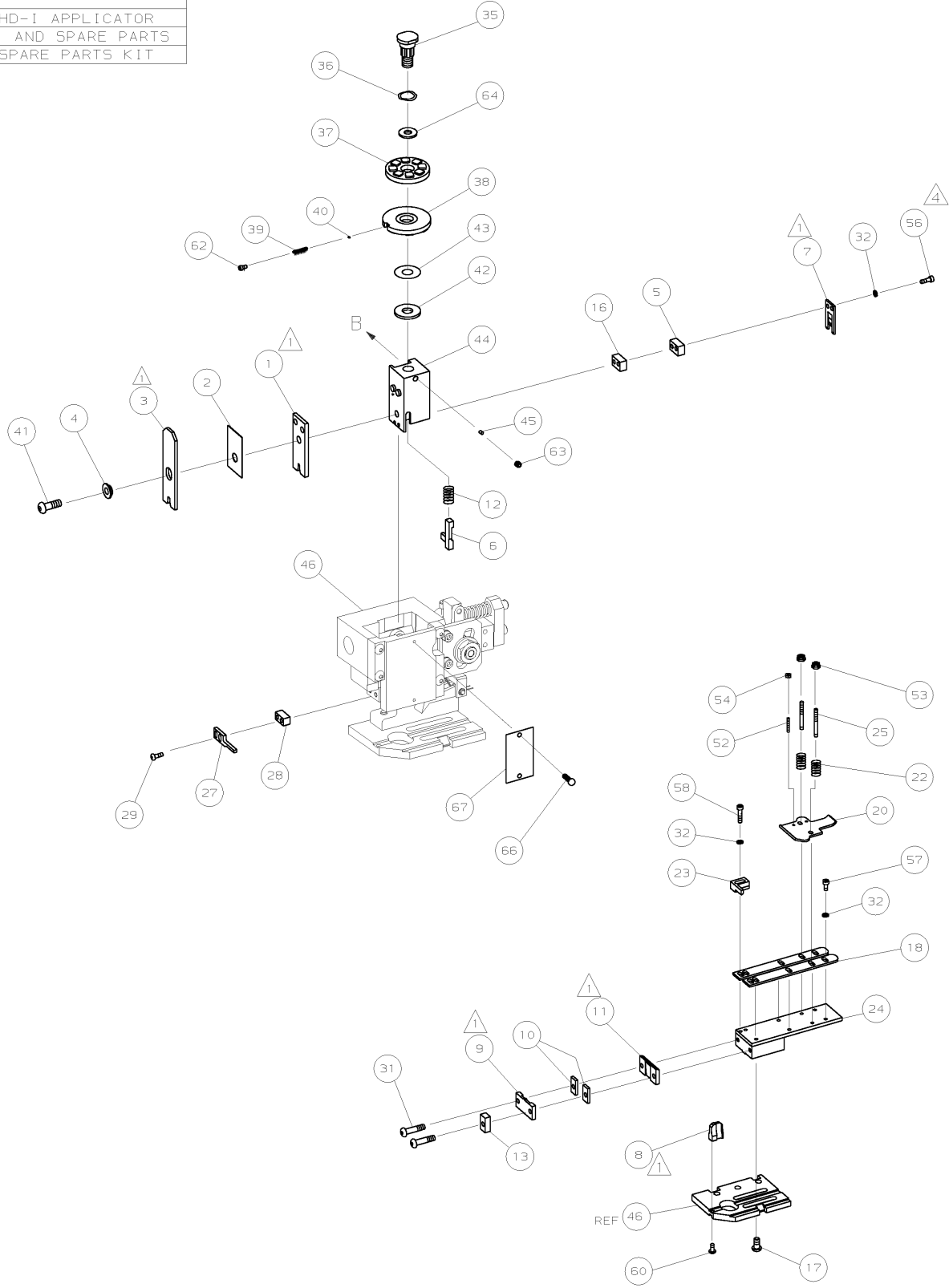
DRAWING MADE IN THIRD ANGLE PROJECTION

PART NUMBER	REV	FIRST USED	TERMINATOR	FEED TYPE	DESCRIPTION
1339588-1	A		BENCH & LEADMAKER	MECH POST FEED	HD-I APPLICATOR
7-1339588-1	A		BENCH & LEADMAKER	MECH POST FEED	-1 AND SPARE PARTS
7-1339588-7	A		-	-	SPARE PARTS KIT

CRIMP DATA AMP TERMINAL AMP CRIMP SPECS				
TERMINAL NAME: .110 SERIES FASTIN - FASTON RECEPTACLE				
CRIMP	SIZE	TYPE	RANGE	
WIRE	1.78 [.070 IN]	F	0.50mm ² - 1.00mm ²	
INSUL	2.54 [.100 IN]	OV	1.40-2.30 [.055-.090 IN]	
WIRE STRIP LENGTH 3.90-4.70 [.154-.185 IN]			APPL INSTRUCTION 408-8323	
TERMINAL APPL SPEC 114-20021		-		FEED 16.89 [.665 IN]
TERMINALS APPLIED				
160864	-	-	-	-
-	-	-	-	-
-	-	-	-	-
-	-	-	-	-
-	-	-	-	-
-	-	-	-	-
-	-	-	-	-
-	-	-	-	-
WIRE SIZE mm ² AWG			CRIMP HEIGHT 	PIN PN AND LENGTH [IN] 
1.00mm ²			1.27 ±0.05 [.050 ±.002 IN]	2-354779-3 [.3105]
0.75mm ²			1.16 ±0.05 [.046 ±.002 IN]	3-354779-4 [.3160]
0.50mm ²			1.05 ±0.05 [.041 ±.002 IN]	4-354779-4 [.3210]
-			-	-
-			-	-
-			-	-
-			-	-
-			-	-
-			-	-
-			-	-
-			-	-
-			-	-
-			-	-
-			-	-
-			-	-

1. RECOMMENDED SPARE PARTS.
2. GREASE RAM, CAM, CAM FOLLOWER AND FEED ROD LIGHTLY.
3. LUBRICATE DAILY PER THE APPLICATOR INSTRUCTION SHEET SUPPLIED WITH THE APPLICATOR.
4. CUT TO LENGTH AT ASSEMBLY.

VIEW B ROTATED 180°	
POST-FEED 40 mm STROKE	POST-FEED 30 mm STROKE
	
LEADMAKER OR BENCH G	K TERMINATOR BENCH MACHINE



QTY REQD PER ASSY		PARTS LIST	
DIMENSIONS: mm [INCHES]		MATERIAL	
DO NOT SCALE PRINT.		HT TR	
TOLERANCES UNLESS OTHERWISE SPECIFIED:		FIN	
1 PLC DEC ±		DR 18SEP01 APP 18SEP01	
2 PLC DEC ±		CHK - L.LOFTHOUSE F.BACKHURST	
3 PLC DEC ±		REL 18-10-01 M.CLIFFORD	
ANGLES ±		NAME	
SURF TEXTURE: ✓		END FEED HD-I APPLICATOR	
REMOVE BURRS BREAK SHARP EDGES R0.38 MAX		SCALE	
CASE CODE 00779		DWG NO 1339588	
CUSTOMER AND ASSEMBLY DRAWING		SHEET 1 OF 1	
		REV A	
		RESTRICTED TO	

Mouser Electronics

Authorized Distributor

Click to View Pricing, Inventory, Delivery & Lifecycle Information:

[TE Connectivity:](#)

[1339588-1](#)