

4

3

2

1

LOC E	DIST B	REVISIONS					
		P	LTR	DESCRIPTION	DATE	DWN	APVD
			C	ECR-06-010127	18MAY06	JMS	FWK

NOTES:

- 1

PACK IN ACCORDANCE WITH AMP SPEC 107-3275
- 2

100 TRAY PACK IN ACCORDANCE WITH AMP SPEC 107-3275
- 3

Au PLATING
- 4

Ni PLATING
- 5

THIS ITEM MUST BE WHITE
- 6

HAND TOOL : 9-1478240-0
- 7

DIE SET : 9-1478246-0
- 8

ELECTRICAL CHARACTERISTICS

FREQUENCY RANGE: DC - 11 GHz

NOMINAL IMPEDANCE: 50 Ohm

INSULATION RESISTANCE: 5000 MOhm

WORKING VOLTAGE: 1000 Volts RMS at Sea Level

DIELECTRIC WITHSTAND VOLTAGE: 2500 Volts RMS Max

CONTACT RESISTANCE: 1.00 mOhm Max

CENTRE CONTACT: 1.00 mOhm Max

OUTER CONTACT: 1.50:1 Max

VSWR @ 4GHz: 0.30 Max
- 9

MECHANICAL CHARACTERISTICS

COUPLING RETENTION FORCE: 445N Min

CABLE RETENTION FORCE: 350N Min

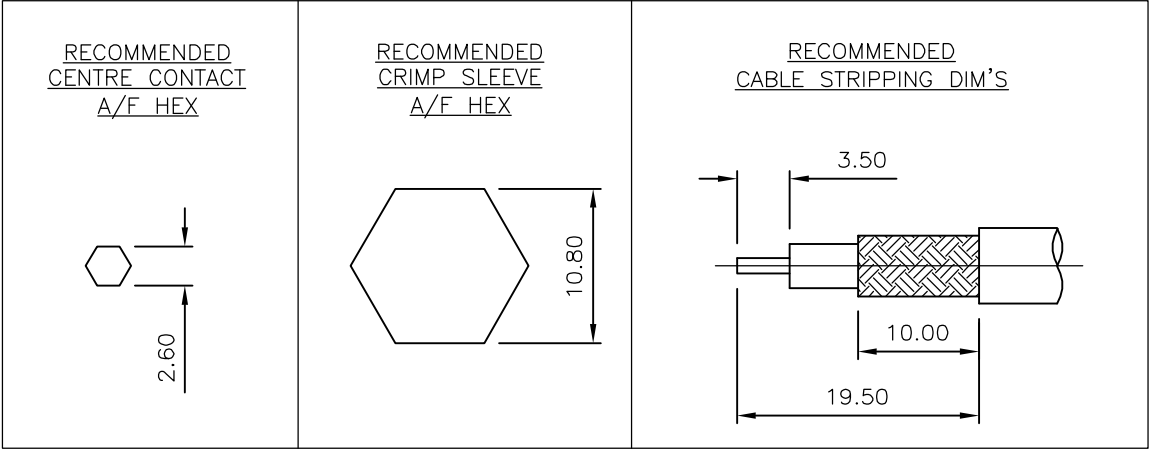
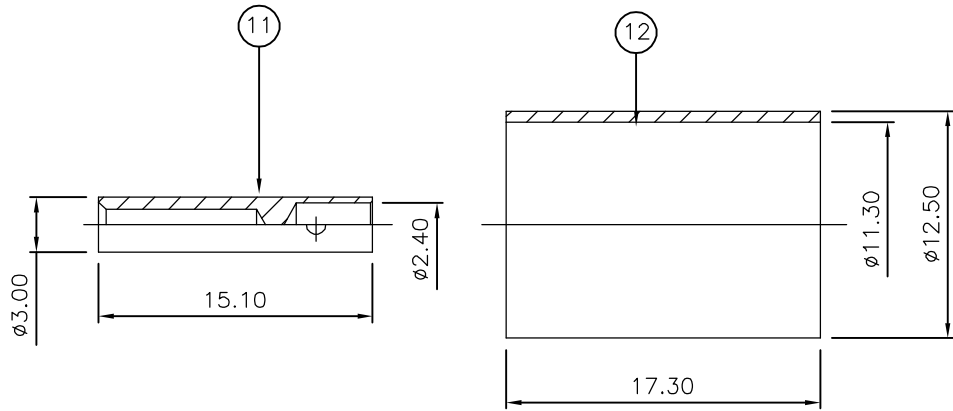
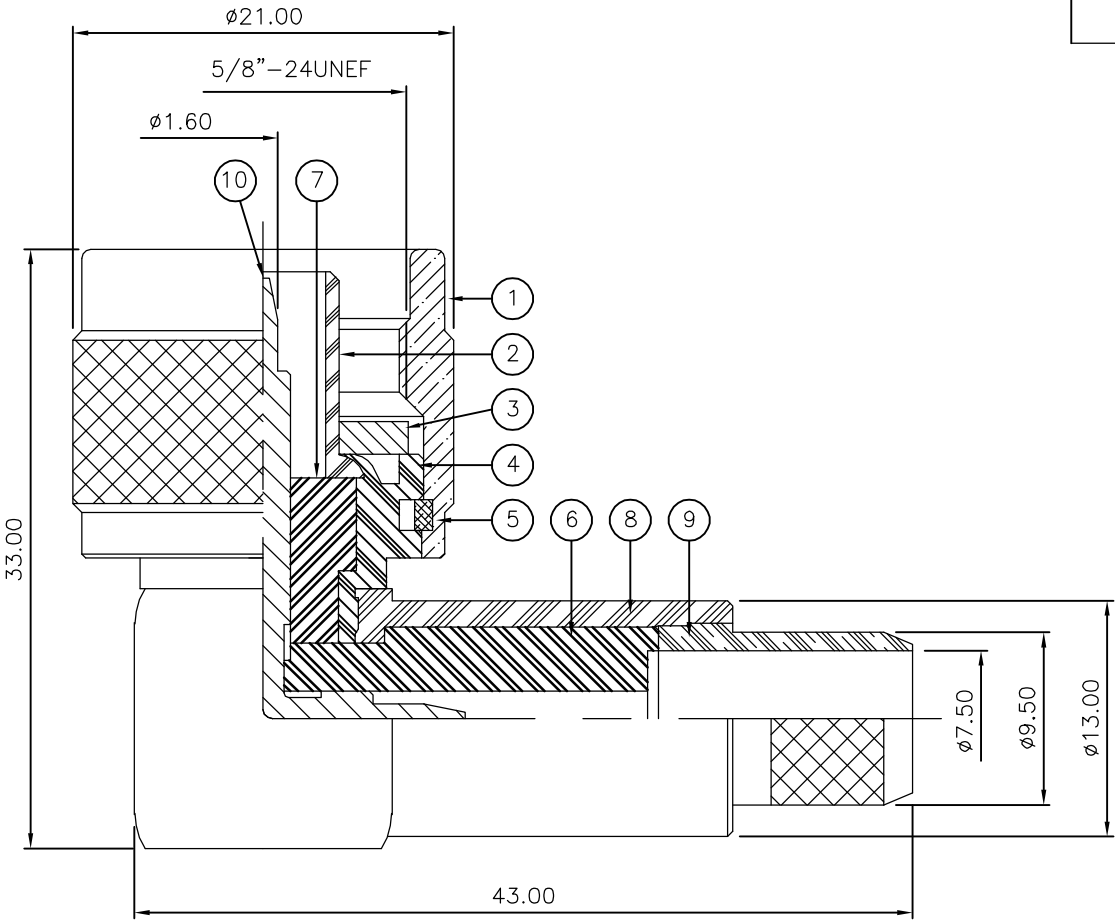
DURABILITY: 500 Cycles Min
- 10

ENVIRONMENTAL CHARACTERISTICS

OPERATING TEMPERATURE: -65 to +165 DegC
- 11

FOR TECHNICAL DATA REFER TO YOUR LOCAL TYCO ELECTRONICS SALES OFFICE
- 12

ALL DIMENSIONS ARE NOMINAL FOR REFERENCE ONLY UNLESS OTHERWISE STATED



		1	1	BRASS	4	FERRULE	12
		1	1	BRASS	3	CONTACT 2	11
		1	1	BRASS	3	CONTACT 1	10
		1	1	BRASS	4	CHASSIS 2	9
		1	1	BRASS	4	BODY 2	8
		1	1	PTFE		INSULATION 2	7
		1	1	PTFE		INSULATION 1	6
		1	1	BRASS		CIRCLIP	5
		1	1	BRASS	4	BODY 1	4
		1	1	SILICONE RUBBER	5	GASKET	3
		1	1	BRASS	4	CHASSIS 1	2
		1	1	BRASS	4	COUPLING NUT	1
		6--0	1--0	MATERIAL		DESCRIPTION	ITEM
		4	1				
QUANTITY PER ASSY				PARTS LIST			

THIS DRAWING IS A CONTROLLED DOCUMENT.

DIMENSIONS: mm

MATERIAL

SEE TABLE

TOLERANCES UNLESS OTHERWISE SPECIFIED:

0 PLC ± -

1 PLC ± -

2 PLC ± -

3 PLC ± -

4 PLC ± -

ANGLES ± -

FINISH -

DWN J.SANDWELL 18MAY06

CHK S.PARLOW 18MAY06

APVD F.WHEELER-KING 18MAY06

PRODUCT SPEC -

APPLICATION SPEC 411-3247

WEIGHT -

CUSTOMER DRAWING

Tyco Electronics Corporation

Bideford EX39 4HE

NAME TYPE 'N' ELBOW PLUG CRIMP 50 OHM RG9B/U, 214/U, URM91, KX 13, KX 24

SIZE A3

CAGE CODE 00779

DRAWING NO C-1337628

RESTRICTED TO -

SCALE NTS

SHEET 1 OF 1

REV C

Mouser Electronics

Authorized Distributor

Click to View Pricing, Inventory, Delivery & Lifecycle Information:

[TE Connectivity:](#)

[1-1337628-0](#)