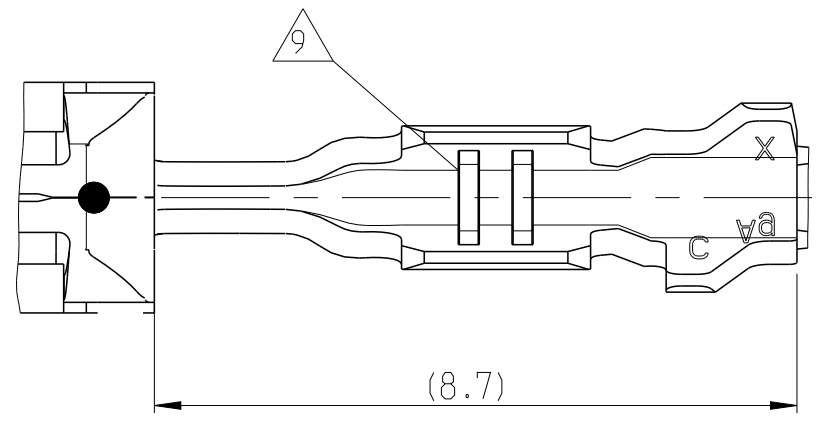
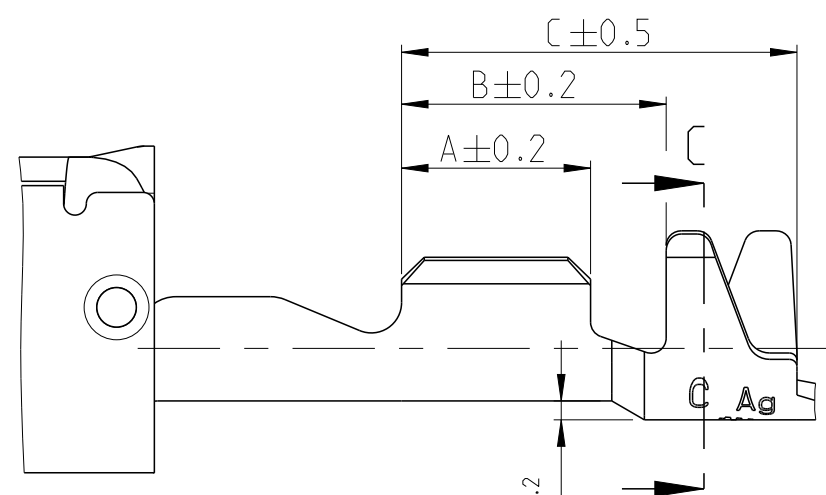
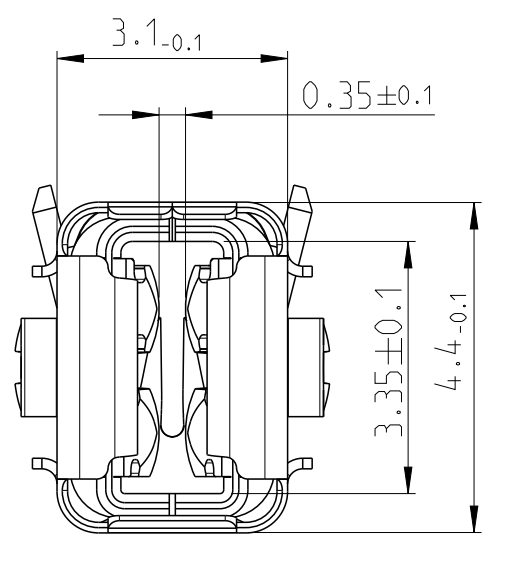
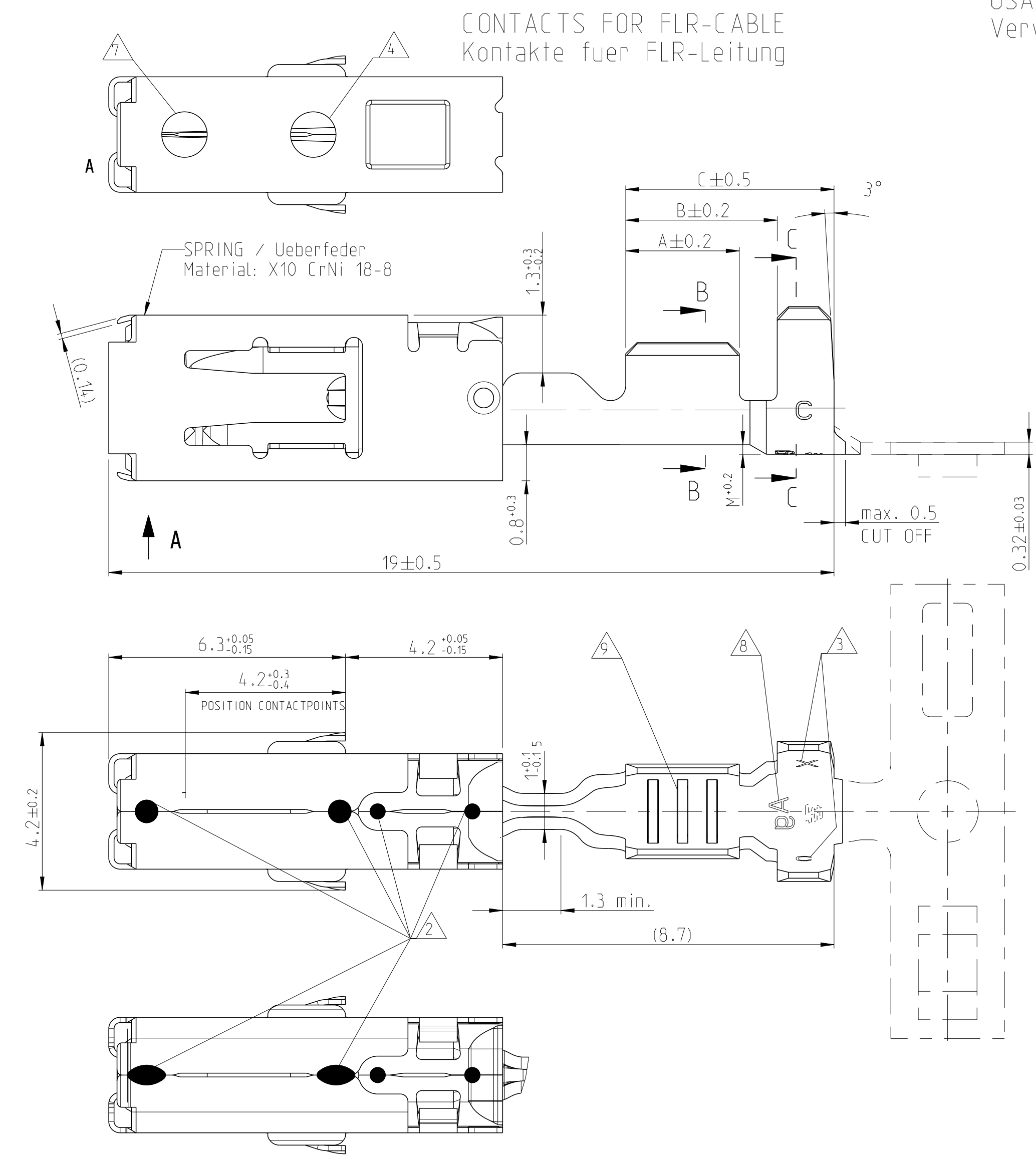


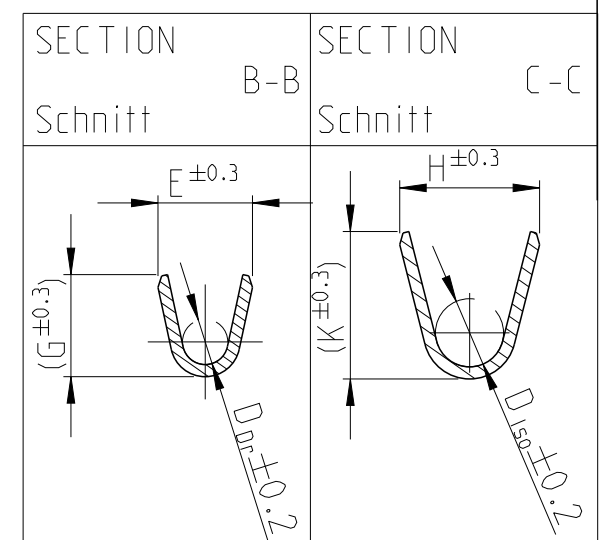
LOC	DIST	REVISIONS			
AI	-	NO.	DATE	BY	APPV
		C 12	ECR-15-001434	02FEB2015	SG RL
		C 13	ECR-15-010777	20JUL2015	SG RL
		C 14	ECR-15-012070	22SEP2015	JB, JH BK
		C 15	ECR-15-017391	30NOV2015	SG RL

USABLE WITH TAB 0.8mm AND TAB 0.6mm THICKNESS
Verwendbar mit Flachstecker 0.8mm und 0.6mm Dicke



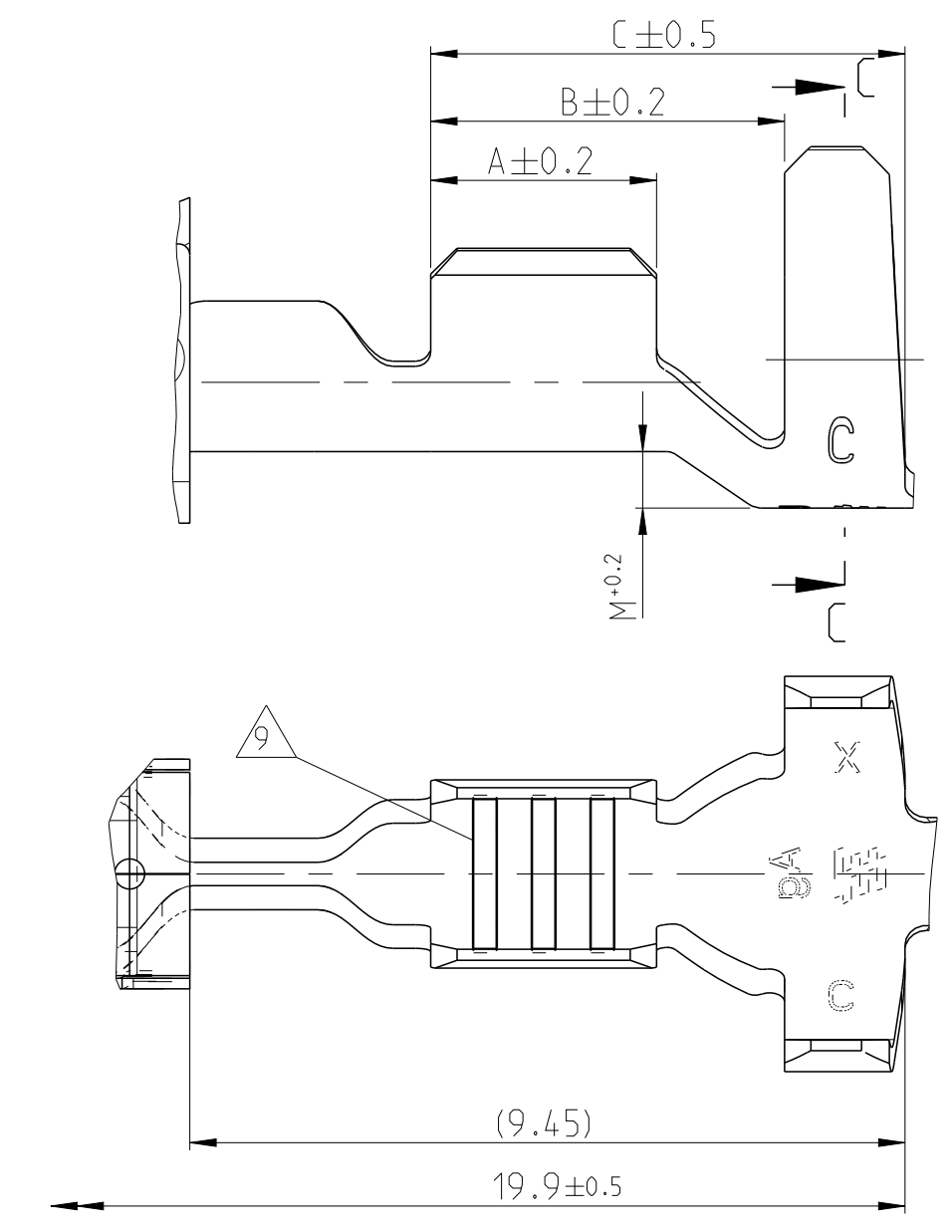
TYPE A

TYPE B



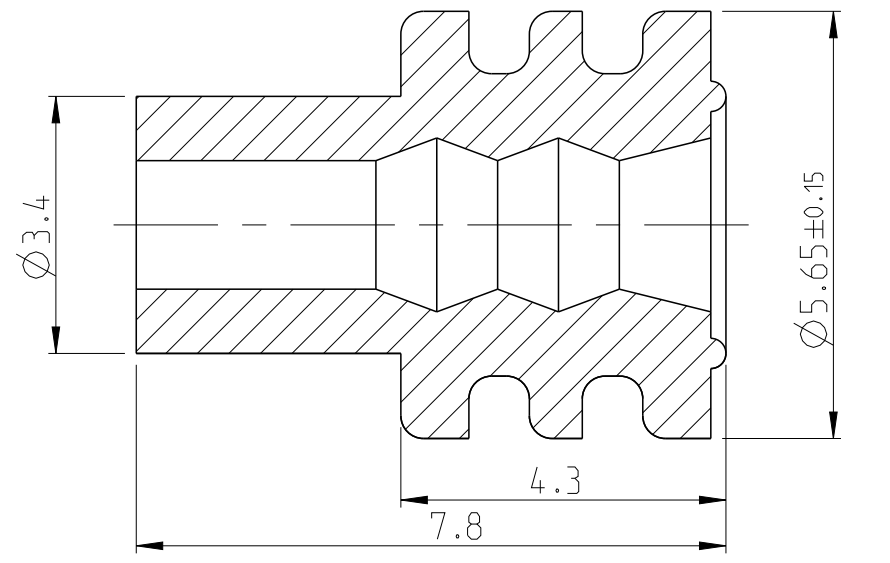
CONTACTS FOR SINGLE WIRE SEALING SYSTEM: FLR- AND FLK- CABLE
Kontakte fuer Einzel-Dichtung-System: FLR- und FLK-Leitung

DIMENSIONS SEE FIGURE "CONTACTS FOR FLR-CABLE"
Masse siehe Darstellung der Kontakte fuer FLR-Leitung



SINGLE WIRE SEALING SYSTEM

ORDER NO. Bestell-Nr.	INSULATION DIA Isolations Ø	COLOUR Farbe
963292-1	2.7...3.0	YELLOW gelb
963293-1	2.0...2.7	REDBROWN rotbraun
963294-1	1.2...2.1	BLUE blau

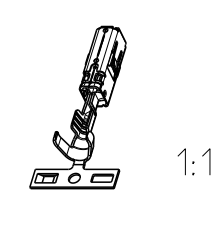


1 TO BE USED ON Flachstecker / TAB 2.8 ±0.3 x 0.6 ±0.07
Geeignet fuer Flachstecker / TAB 2.8 ±0.1 x 0.8 ±0.03

- 2 ALTERNATIVELY LASERWELDED POINT OR LINE SHAPED (DIE CAUSED). Laserschweissung wahlweise Punkt- oder Linienfoermig (Fertigungsbedingt)
- 3 DIE-IDENTIFICATION AND REVISION STATUS. Kennung fuer Werkzeug und Revisionsstand
- 4 MIN. 0.8µm GOLDPLATE IN CONTACT AREA OVER MIN. 1.3µm NICKELPLATE; MIN. 1µm TINPLATE IN CRIMP AREA. AS INDEX SEE HOLE AT SPRING. 0.8µm Goldueberzug im Kontaktbereich ueber min. 1.3µm Nickelueberzug; min. 1µm Zinnueberzug im Crimpbereich. Zur Kennzeichnung siehe Loch an der Ueberfeder
- 5 FOR DOUBLE AND SINGLE CRIMP. Fuer Doppel- und Einzelcrimp
- 6 SINGLE WIRE SEAL TO BE SELECTED ACCORDING TO INSULATION-DIA. Auswahl der Einzeldichtung entsprechend dem Isolationsdurchmesser
- 7 MANUFACTURIN-CONDITIONED HOLE. IS STARTING FROM REV. C AT ALL VERSIONS. Fertigungsbedingtes Loch, befindet sich ab Rev. C an allen Kontakten
- 8 MARKING WITH "Ag" FOR SILVERPLATE IN CONTACT AREA. Kennzeichnung mit "Ag" bei Silberueberzug im Kontaktbereich
- 9 DIFFERENT FORM OF THE SERRATION POSSIBLE. Unterschiedliche Ausfuehrung der Rillen moeglich
- 10 PN 1241386 AND 1241392 NOT FOR NEW APPLICATION. REPLACED BY PN 1564982 AND PN1564984. PN 1241386 und 1241392 nicht fuer Neuanwendung, Ersatz durch PN 1564982 und 1564984
- 11 DETAILS OF DESIGN ARE LEFT TO MANUFACTURER. Einzelheiten der Ausfuehrung bleiben dem Hersteller ueberlassen
- 12 FINISHED PRODUCT AT CONTACT POINTS LUBRICATED. Fertigkeit an den Kontaktpunkten geschmiert
- 13 "Ag-" MARKING ON SILVER PLATED VERSIONS FOR INCREASED LIMIT TEMPERATURE. "Ag-" Markierung auf versilberten Versionen fuer erhoehte Grenztemperatur

SEE APPLICATION SPECIFICATION 114-18387

ORDER NO. Bestell-Nr.	REV.	WIRE RANGE Drahtgroessenbereich (mm ²)	INSULATION DIA Isolations Ø (mm)	MATERIAL Werkstoff	PLATING Ueberzug	LENGTH Laenge	WIRE CRIMP Drahtcrimp	INSUL. CRIMP Isol.-Crimp	CRIMP DIMENSIONS (mm) Crimpabmessungen	EXTRACTION TOOL Ausdruckwerkzeug	CRIMP DATA AND CRIMP TOOL
0-1241396-4	C	>1.0-2.5	2.2-3.0	CuNiSi	SILVERPLATED versilbert	A = 3.5 B = 5.2 C = 6.8	E = 3.6 G = 3.8 D _{Dr} = 1.8	H = 5.45 K = (4.8) D _{Iso} = 3.5 M = 0.85	TYPE A	HANDCRIMP TOOL Handcrimpwerkzeug 539635-1	INSERT / Matrize 539952-2
2-1241396-3	C			CuNiSi	PRESILVER vorversilbert						
0-1241396-3	C			CuNiSi	PRESILVER vorversilbert						
0-1241396-2	C	0.5-1.0	1.4-2.7	CuNiSi	TINPLATED vorverzinkt	A = 3.0 B = 4.7 C = 6.3	E = 2.5 G = 2.7 D _{Dr} = 1.2	H = 5.25 K = (4.8) D _{Iso} = 3.3 M = 0.75	TYPE A	HANDCRIMP TOOL Handcrimpwerkzeug 539635-1	INSERT / Matrize 539952-2
0-1241394-3	C			CuNiSi	PRESILVER vorversilbert						
0-1241394-2	C			CuNiSi	TINPLATED vorverzinkt						
0-1241394-1	C	0.2-0.35	1.1-1.4	CuNiSi	PRESILVER vorversilbert	A = 2.5 B = 4.7 C = 6.3	E = 1.9 G = 1.9 D _{Dr} = 0.75	H = 4.85 K = (4.4) D _{Iso} = 3.2 M = 0.7	TYPE B	HANDCRIMP TOOL Handcrimpwerkzeug 539635-1	INSERT / Matrize 4-1579016-1
0-1241392-2	C			CuNiSi	TINPLATED vorverzinkt						
0-1241392-1	C			CuNiSi	PRESILVER vorversilbert						
0-1564984-3	C	0.2-0.35	1.1-1.4	CuNiSi	PRESILVER vorversilbert	A = 3.3 B = 4.3 C = 5.8	E = 2.4 G = 2.3 D _{Dr} = 1.0	H = 4.7 K = (4.9) D _{Iso} = 2.6 M = 0.4	TYPE A	HANDCRIMP TOOL Handcrimpwerkzeug 539635-1	INSERT / Matrize 539951-2
0-1564984-2	C			CuNiSi	TINPLATED vorverzinkt						
0-1564984-1	C			CuNiSi	PRESILVER vorversilbert						
0-1241390-3	C	>1.0-2.5	2.2-3.0	CuNiSi	PRESILVER vorversilbert	A = 2.5 B = 3.5 C = 5.2	E = 1.9 G = 1.9 D _{Dr} = 0.75	H = 2.5 K = (2.5) D _{Iso} = 1.1 M = 0.2	TYPE B	HANDCRIMP TOOL Handcrimpwerkzeug 539635-1	INSERT / Matrize 4-1579016-1
0-1241390-2	C			CuNiSi	TINPLATED vorverzinkt						
0-1241390-1	C			CuNiSi	PRESILVER vorversilbert						
0-1241388-3	C	0.5-1.0	1.4-2.1	CuNiSi	PRESILVER vorversilbert	A = 2.5 B = 3.5 C = 5.2	E = 2.4 G = 2.3 D _{Dr} = 1.0	H = 2.5 K = (2.5) D _{Iso} = 1.1 M = 0.2	TYPE B	HANDCRIMP TOOL Handcrimpwerkzeug 539635-1	INSERT / Matrize 4-1579016-1
0-1241388-2	C			CuNiSi	TINPLATED vorverzinkt						
0-1241388-1	C			CuNiSi	PRESILVER vorversilbert						
0-1241386-3	C	0.2-0.35	1.1-1.4	CuNiSi	PRESILVER vorversilbert	A = 2.5 B = 3.5 C = 5.2	E = 1.9 G = 1.9 D _{Dr} = 0.75	H = 2.5 K = (2.5) D _{Iso} = 1.1 M = 0.2	TYPE B	HANDCRIMP TOOL Handcrimpwerkzeug 539635-1	INSERT / Matrize 4-1579016-1
0-1241386-2	C			CuNiSi	TINPLATED vorverzinkt						
0-1241386-1	C			CuNiSi	PRESILVER vorversilbert						
0-1564982-3	C	0.2-0.35	1.1-1.4	CuNiSi	PRESILVER vorversilbert	A = 2.5 B = 3.5 C = 5.2	E = 2.4 G = 2.3 D _{Dr} = 1.0	H = 2.5 K = (2.5) D _{Iso} = 1.1 M = 0.2	TYPE B	HANDCRIMP TOOL Handcrimpwerkzeug 539635-1	INSERT / Matrize 4-1579016-1
0-1564982-2	C			CuNiSi	TINPLATED vorverzinkt						
0-1564982-1	C			CuNiSi	PRESILVER vorversilbert						



1:1

THIS DRAWING IS A CONTROLLED DOCUMENT. DIESER ZEICHNUNGSDRUCK IST EIN KONTROLLIERTES DOKUMENT. APPROVED BY THE MANUFACTURER AND IS NOT TO BE REPRODUCED OR TRANSMITTED IN ANY FORM OR BY ANY MEANS, ELECTRONIC OR MECHANICAL, INCLUDING PHOTOCOPYING, RECORDING, OR BY ANY INFORMATION STORAGE AND RETRIEVAL SYSTEM.

DATE: 06 JUN 2006	DRW: L. Liebing	CHK: -	APVD: -
TOLERANCES UNLESS OTHERWISE SPECIFIED: ALLE MASSTABEN (mm)		TO FINISHES UNLESS OTHERWISE SPECIFIED: ALLE MASSTABEN (mm)	
0 PLC #	GENERAL #	PRODUCT SPEC	NAME
1 PLC #	TOLERANCE #	108-18387	PRODUCT GROUP DRAWING FOR AMP MCP 2.8K
2 PLC #	FINISHES #	APPLICATION SPEC	SIZE
3 PLC #	FINISHES #	VERARBEITUNGSSPEC	A1
4 PLC #	FINISHES #	ANLEGEZEICHNUNG	CAGE CODE
5 PLC #	FINISHES #	FINISHERZEICHNUNG	DRAWING NO.
6 PLC #	FINISHES #	FINISHERZEICHNUNG	114-18387
7 PLC #	FINISHES #	FINISHERZEICHNUNG	SCALE
8 PLC #	FINISHES #	FINISHERZEICHNUNG	10:1
9 PLC #	FINISHES #	FINISHERZEICHNUNG	SHEET
10 PLC #	FINISHES #	FINISHERZEICHNUNG	1 OF 1
11 PLC #	FINISHES #	FINISHERZEICHNUNG	REV
12 PLC #	FINISHES #	FINISHERZEICHNUNG	C15

Customer Drawing / KUNDENZEICHNUNG

Mouser Electronics

Authorized Distributor

Click to View Pricing, Inventory, Delivery & Lifecycle Information:

[TE Connectivity:](#)

[1241388-1 \(Mouser Reel\)](#) [1241388-1 \(Cut Strip\)](#)