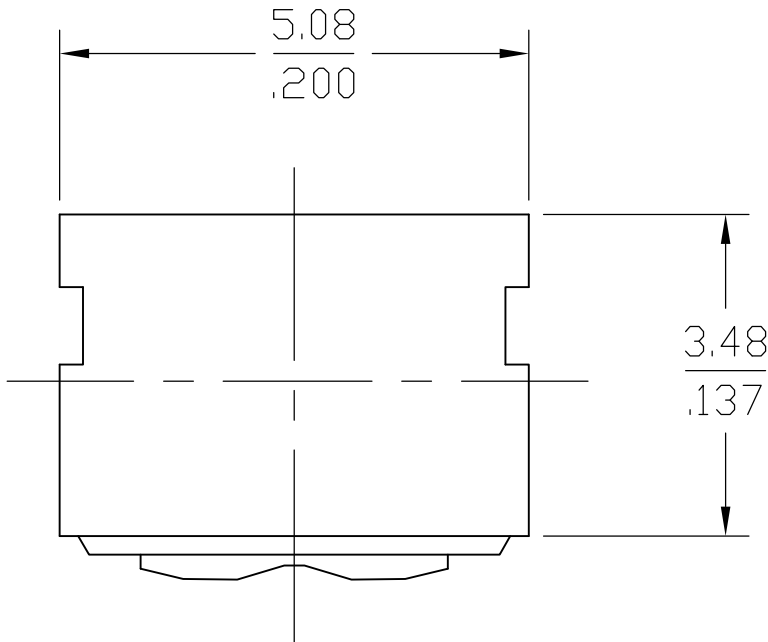
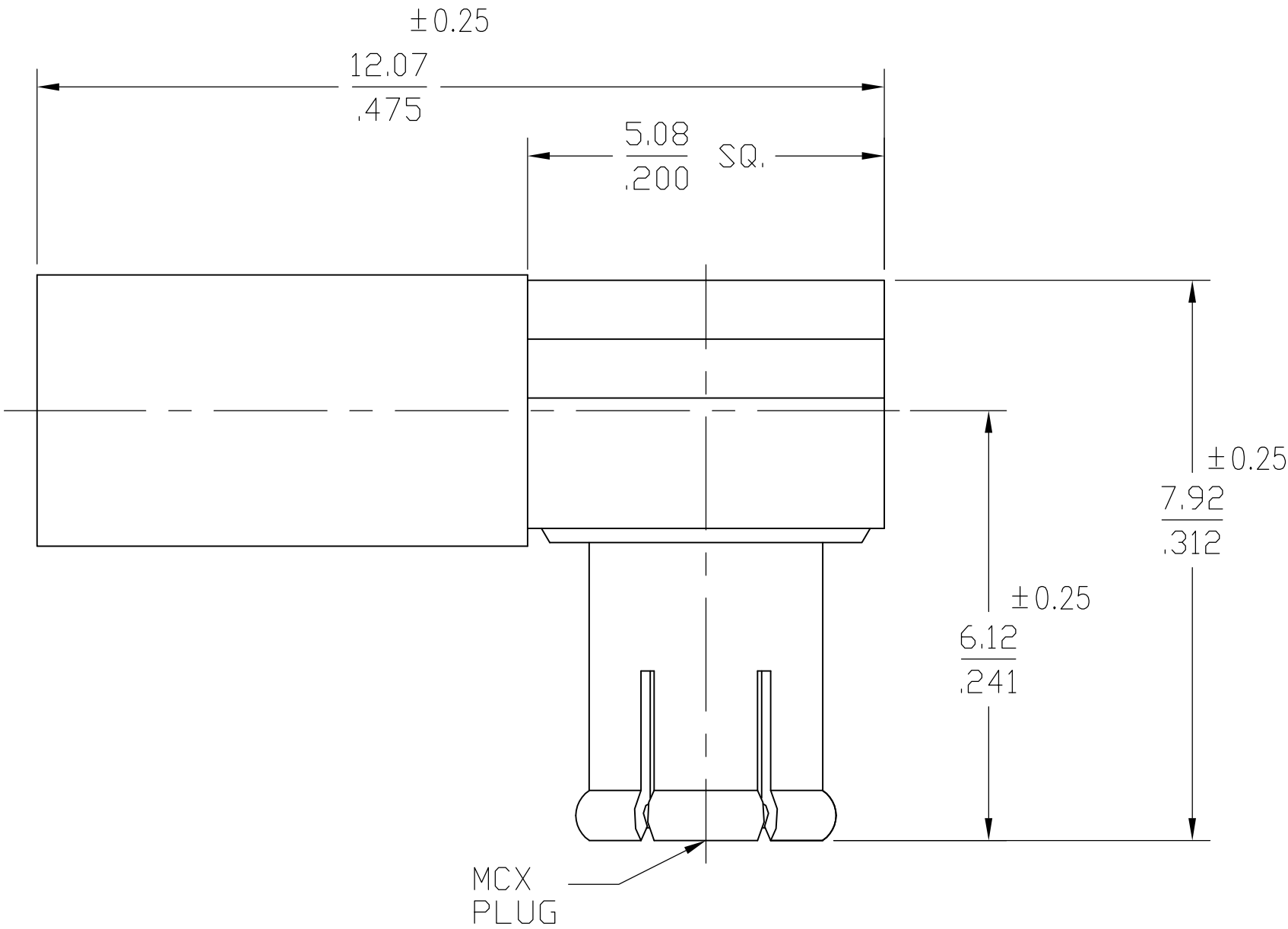


LOC	DIST	REVISIONS					
		P	LTR	DESCRIPTION	DATE	DWN	APVD
AJ	00		B2	REVISED PER ECO-13-000860	08JUN13	G.C	M.Y

1. SEE INSTRUCTION SHEET
408-4633



1060891-1
PART NUMBER

DESIGNED FOR USE WITH RG-174/U, RG-188/U, RG-316/U, RG-179/U RG-187/U FLEX CABLE & JUNKOSHA CABLE A12B0426	
CABLE ENTRY DIAMETER MINIMUM	
CONTACT	.024 SLOT
HOUSING	.067
FERRULE	.125

XX.X = mm
.XXX = in.

ELECTRICAL	MECHANICAL	ENVIRONMENTAL
Nominal Impedance (Ohms) 50	Force to Engage (lbs MAX)	TEMPERATURE RATING -65° TO +165°C
Frequency Range (GHz) DC to 6	3.4	Vibration MIL-STD-202, Method
Volt Rating (VRMS MAX)	& Disengage (lbs) 1.77 MIN 4.5 MAX	204, Condition B
@ Sea Level 335	Center Contact Captivation Designed to	Thermal Shock MIL-STD-202,
VSWR 1.25 MAX @ 4 GHz	Maintain MCX Interface When Mating	Method 102, Condition B
1.35 MAX @ 6 GHz		Moisture Resistance MIL-STD-202,
Insertion Loss .1dB MAX/1000 MHz		Method 106D,10 Cycles, 96 Hours
Corona, 70,000 Ft (VRMS MIN) 250		Corrosion - MIL-STD-202, Method
Dielectric Withstanding Voltage		101, Condition B
(VRMS MIN) @ Sea Level 1000		
Contact Resistance (Milliohms MAX)		
Center Contact 5.0		
Outer Contact 1.0		
Cable to Housing 1.0		
RF High Potential @ Sea Level		
(VRMS MIN @ 5 MHz) 670		
I.R.(Megohms MIN) 10,000		

HOUSING CAP	BRASS PER ASTM-B-16, HALF HARD	NICKEL PLATE PER QQ-N-290
CENTER CONTACT	BRASS PER ASTM-B-16, HALF HARD	GOLD PLATE PER MIL-G-45204
DIELECTRIC	PTFE FLUOROCARBON PER ASTM-D-1457	N/A
CONTACT FINGERS	BERYLLIUM COPPER PER ASTM-B-196 OR ASTM-B-197, ALLOY C17300, CONDITION H	GOLD PLATE PER MIL-G-45204
FERRULE	COPPER OR BRASS ALLOY ROCKWELL F65 MAXIMUM	NICKEL PLATE PER QQ-N-290
COMPONENT	MATERIAL	FINISH
THIS DRAWING IS A CONTROLLED DOCUMENT.		DWN K.C.MAHER 2/20/91
		CHK BB 2/21/91
		APVD D.R.L 2/21/91
DIMENSIONS: mm [INCHES]		NAME
TOLERANCES UNLESS OTHERWISE SPECIFIED:		PRODUCT SPEC
0 PLC ± -		APPLICATION SPEC
1 PLC ± -		
2 PLC ± 0.12[.005]		
3 PLC ± -		
4 PLC ± -		
ANGLES ± 1°		
FINISH		
MATERIAL		WEIGHT
		CUSTOMER DRAWING
		SCALE 1:1
		SHEET 1 OF 1
		REV B2
		SIZE CAGE CODE DRAWING NO RESTRICTED TO
		A2 00779 C=1060891-1
		TE Connectivity
		MCX RIGHT ANGLE CABLE PLUG CRIMP ATTACHMENT (5837-5003-10)

Mouser Electronics

Authorized Distributor

Click to View Pricing, Inventory, Delivery & Lifecycle Information:

[TE Connectivity:](#)

[5837-5003-10](#)