

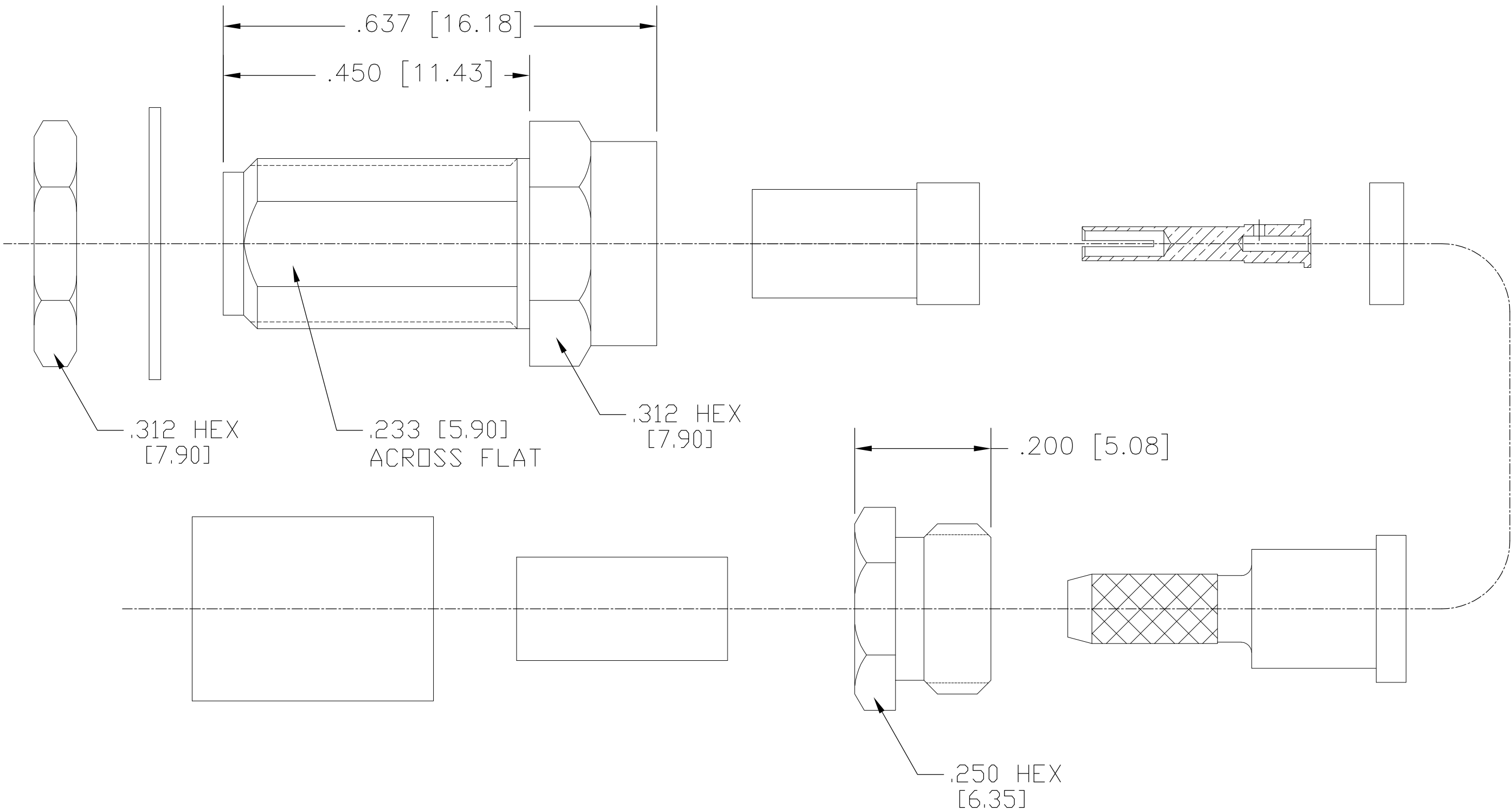
LOC	DIST	REVISIONS					
		P	LTR	DESCRIPTION	DATE	DWN	APVD
AJ	00		C	REV PER ECO-09-027745	17DEC2009	AM	BOB

D

C

B

A



NOTES:



1. DESIGNED FOR RG174/U,179,187,188,316 CABLE

- 1 BRASS
- 2 STAINLESS STEEL
- 3 BERYLLIUM COPPER
- 4 PHOSPHOR BRONZE
- 5 PTFE
- 6 SILICONE RUBBER
- 7 GOLD PLATE
- 8 NICKEL PLATE
- 9 PASSIVATE
- 10 POLYOLEFIN COMPOUND

ELECTRICAL	MECHANICAL	ENVIRONMENTAL
Nominal Impedance (Ohms) 50	Interface Dimensions MIL-STD-348A, Fig. 310.1	TEMPERATURE RATING -40° TO +95°
Frequency Range (GHz) DC to 6	Recommended Mating Torque 7-10 In-Lbs	DURABILITY:500 CYCLES
Volt Rating (VRMS MAX) @ Sea Level 250	Mating Characteristics:	
VSWR 1.18 + .02f(GHz)	Insertion (MAX Lbs) N/A	
Insertion Loss (dB MAX) .07 √f GHz	Withdrawal (MIN Oz) N/A	
Dielectric Withstanding Voltage (VRMS MIN) @ Sea Level 750	Force to Engage and Disengage (In-Lbs MAX) 2	
Contact Resistance (Milliohms MAX) Center Contact 5.0	Center Contact Captivation Axial (Lbs) 6 Min	
Outer Contact 3.0	Radial (In-Oz) N/A	
Cable to Housing 0.5	Cable Retention	
RF High Potential @ Sea Level (VRMS MIN @ 5 MHz) 500	Axial Force (Lbs) 20 MIN	
I.R.(Megohms MIN) 5,000	Torque (In-Oz) N/A	
	Weight (Grams) TBD	

.XXX = in
X.XX = mm

---	1 8	1 8	3 7	5	6	1 8	4 8	1 8	1051933-3
10	1 7	2 7	3 7	5	6	2 7	4 7	2 7	1051933-1
SHRINK TUBING	FERRULE	CLAMP NUT	CENTER CONTACT	DIELE-CTRIC	GASKET	HOUSING & SLEEVE	LOCK WASHER	MOUNTING NUT	TE PN.

THIS DRAWING IS A CONTROLLED DOCUMENT.		DWN ANSON MA 2Jul09		 Tyco Electronics Corporation Kunshan,Jiangsu,RPC 215312			
DIMENSIONS: INCHES[MM]		CHK RITA ZUO 2Jul09					
		APVD BOB ZHAO 2Jul09		NAME SMA STRAIGHT CABLE JACK CLAMP ATTACHMENT —			
		PRODUCT SPEC 108-112002					
		APPLICATION SPEC 408-4804					
		WEIGHT —					
MATERIAL —		FINISH —		SIZE A2	CAGE CODE 00779	DRAWING NO C=1051933	RESTRICTED TO —
CUSTOMER DRAWING				SCALE 5:1	SHEET 1 of 1	REV C	

Mouser Electronics

Authorized Distributor

Click to View Pricing, Inventory, Delivery & Lifecycle Information:

[TE Connectivity:](#)

[2034-5005-00](#)