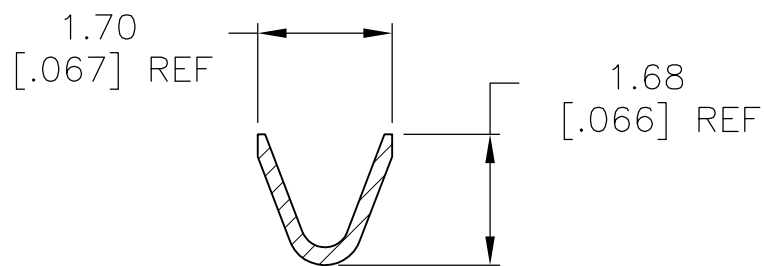
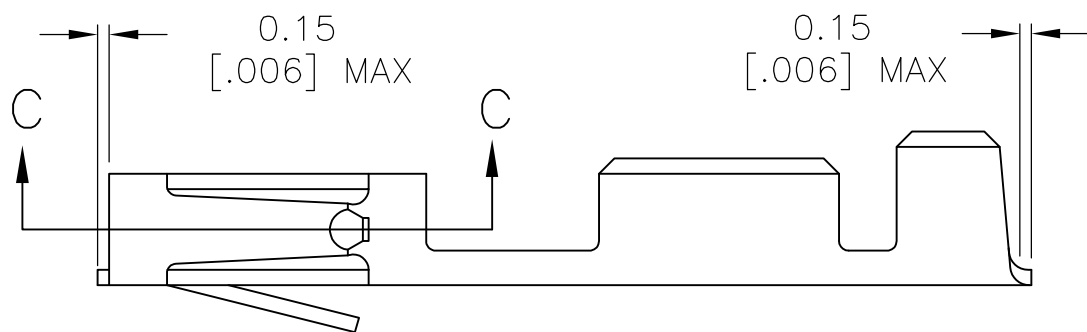
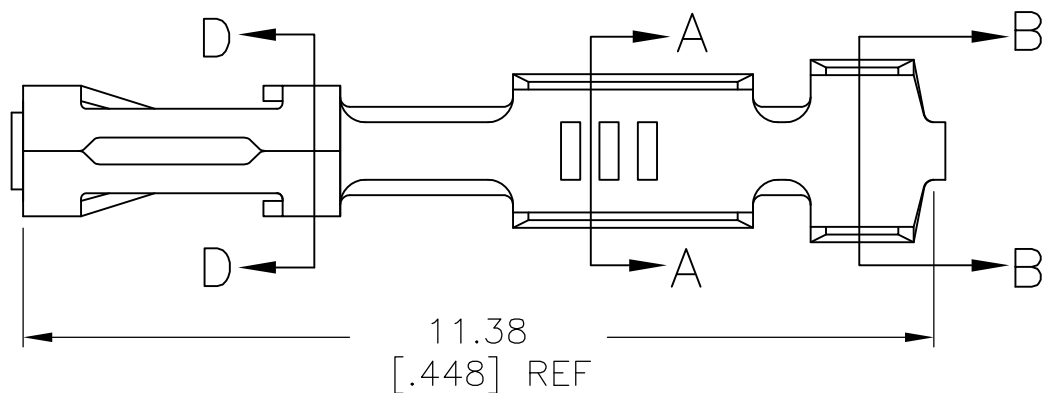


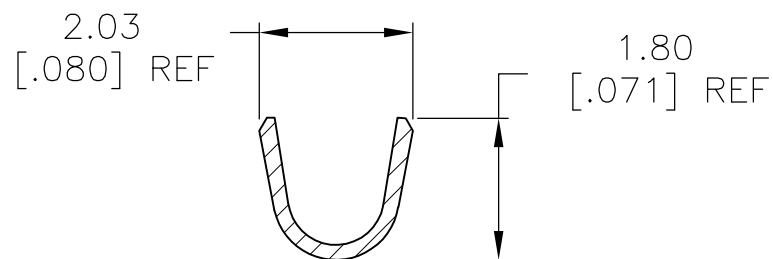
THIS DRAWING IS UNPUBLISHED. RELEASED FOR PUBLICATION

© COPYRIGHT - By - ALL RIGHTS RESERVED.

| LOC | DIST | REVISIONS | | | | | |
|-----|------|-----------|-----|---------------------------|---------|-----|------|
| AD | 00 | P | LTR | DESCRIPTION | DATE | DWN | APVD |
| | | M1 | | REVISED PER ECO-11-004820 | 11MAR11 | RK | HMR |

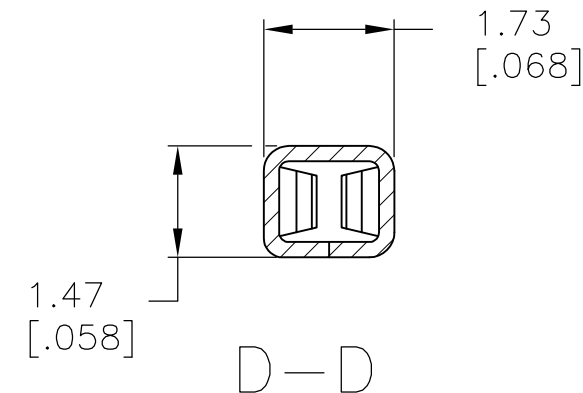
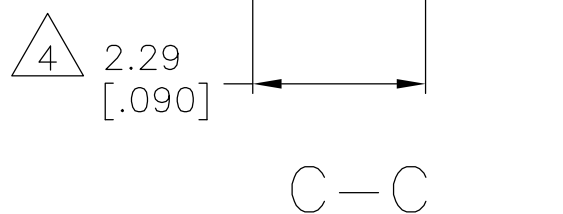


WIRE SIZE #22-#26
SECTION A-A



INSULATION RANGE 1.55 [.061] MAX
SECTION B-B

- 1 0.00076 [.000030] MIN GOLD IN CONTACT AREA, GOLD FLASH ON THE REMAINDER OF THE TERMINAL, ALL OVER
0.00127 [.000050]-0.00254 [.000100] NICKEL ENTIRE TERMINAL.
- 2 PREPLATED 0.00127 [.000050]-0.00381 [.000150] BRIGHT TIN.
- 3 CONTACTS TO BE TREATED WITH LUBRICANT.
- 4 POINT OF MEASUREMENT FOR PLATING THICKNESS (INSIDE BEAMS).



| | | |
|------------|-----|-------------|
| OBSOLETE | - | 102128-5 |
| OBSOLETE | - | 102128-4 |
| OBSOLETE | - | 102128-3 |
| | 2 3 | 102128-2 |
| | 1 | 102128-1 |
| FINISH REF | | PART NUMBER |

| | | | | | | |
|--|---------------------|-----------------------------|---|---------------|-----------------|-----------|
| THIS DRAWING IS A CONTROLLED DOCUMENT. | | DWN E. BRANDBERG | STE TE Connectivity | | | |
| DIMENSIONS: mm [INCHES] | | CHK S. SHUEY 03JAN96 | | | | |
| TOLERANCES UNLESS OTHERWISE SPECIFIED: | | APVD S. SHUEY 03JAN96 | NAME | | | |
| 0 PLC ± - | | PRODUCT SPEC | CONTACT, MOD V, RECEPTACLE, CRIMP SNAP IN, LOOSE PIECE | | | |
| 1 PLC ± - | | 108-25007 | SIZE | | | |
| 2 PLC ± 0.13 [.005] | | APPLICATION SPEC | CAGE CODE | | | |
| 3 PLC ± - | | 114-25003 | DRAWING NO | | | |
| 4 PLC ± - | | WEIGHT | RESTRICTED TO | | | |
| ANGLES ± - | | - | A3 00779 C-102128 | | | |
| MATERIAL PhBr | FINISH SEE TABLE | CUSTOMER DRAWING | | SCALE 10:1 | SHEET 1 OF 1 | REV M1 |

Mouser Electronics

Authorized Distributor

Click to View Pricing, Inventory, Delivery & Lifecycle Information:

[TE Connectivity:](#)

[102128-1](#)