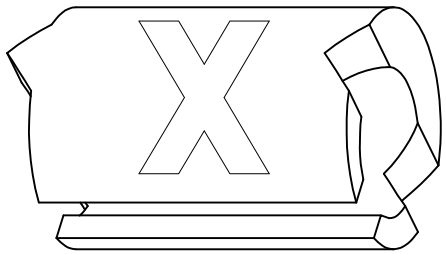
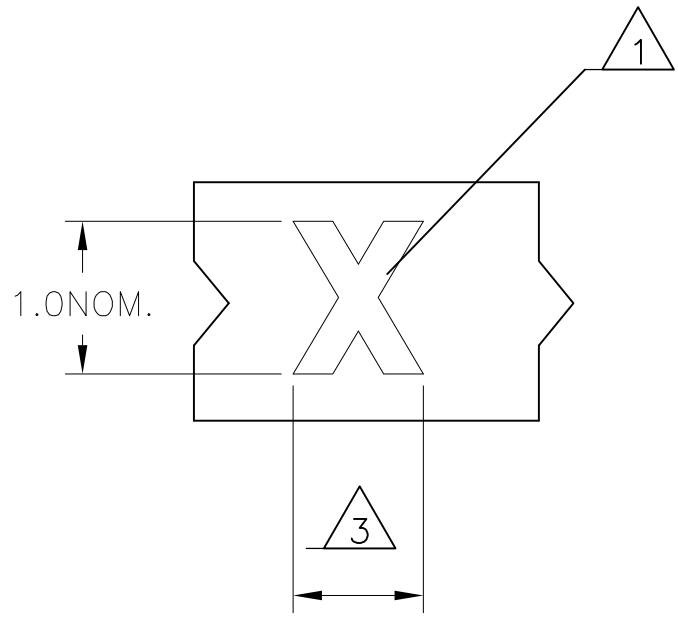
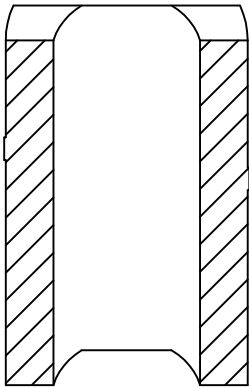
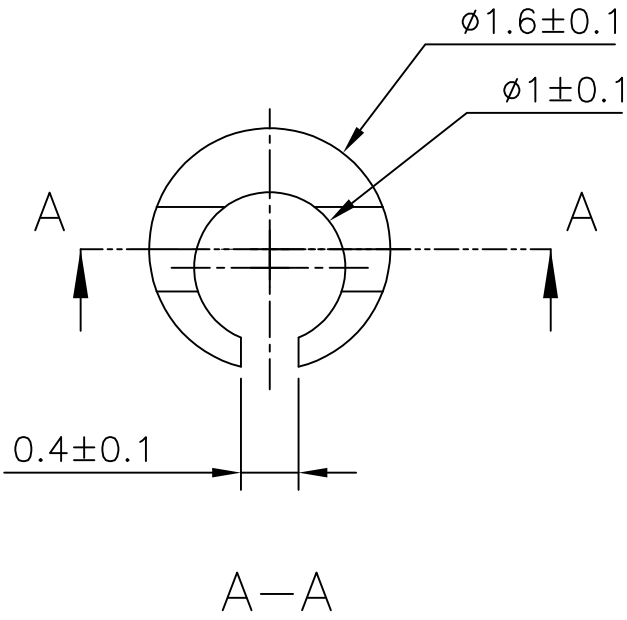
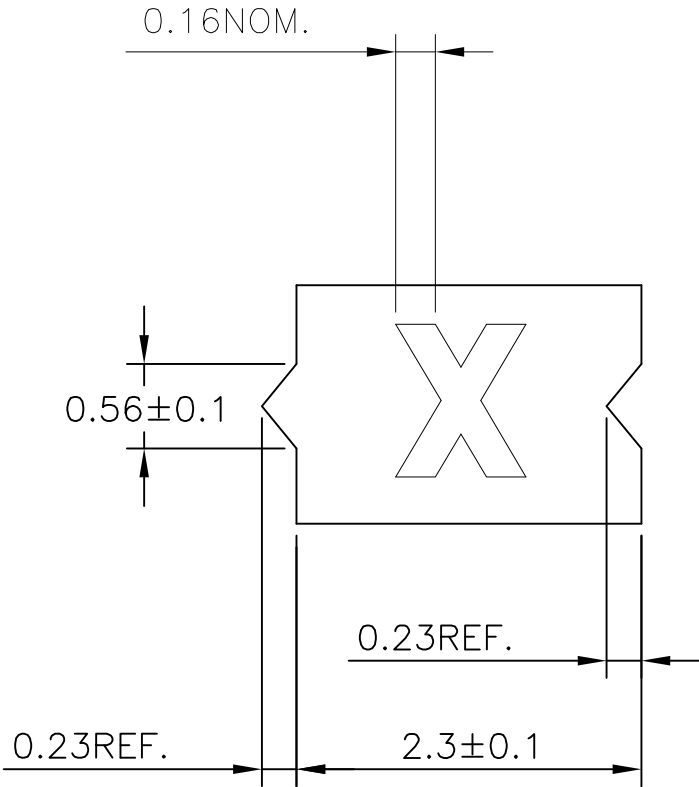

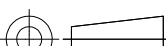


LOC —	DIST —	REVISIONS					
		P	LTR	DESCRIPTION	DATE	DWN	APVD
			1	NEW DRAWING	17DEC2012	AFK	MA



NOTES:

- 1 FOR PART NUMBERS SEE SHEET 3 OF 3.
- 2 MARK SHOULD BE CENTRALLY POSITIONED ±0.1mm
- 3 WIDTH OF MARK DEPENDS ON CHARACTER PRINTED

THIS DRAWING IS A CONTROLLED DOCUMENT.		DWN AFK 17NOV2012		<div>TE Connectivity</div>		
		CHK M APPELLO 17DEC2012				
DIMENSIONS: mm		TOLERANCES UNLESS OTHERWISE SPECIFIED:		NAME STB/STD MARKER WITH APPLICATOR — —		
		0 PLC ± —				
		1 PLC ± —				
		2 PLC ± —		SIZE CAGE CODE DRAWING NO RESTRICTED TO		
		3 PLC ± —				
		4 PLC ± —				
MATERIAL		FINISH		A300779C-1-1768041-3		
THERMOPLASTIC		—		—		
CUSTOMER DRAWING				SCALE NTS		SHEET 1 OF 3
						REV 1

4

3

2

1

THIS DRAWING IS UNPUBLISHED.

RELEASED FOR PUBLICATION

—, —

© COPYRIGHT — TE Connectivity, SWINDON, UK

ALL RIGHTS RESERVED.

LOC

DIST

REVISIONS

P

LTR

DESCRIPTION

DATE

DWN

APVD

—

—

—

—

—

—

—

—

—

—

—

—

DESCRIPTION

PART NO.

STB01-0-0

7-1768036-9

STB01-1-1

8-1768036-2

STB01-2-2

8-1768036-5

STB01-3-3

8-1768036-8

STB01-5-5

9-1768036-3

STB01-6-6

9-1768036-6

STB01-7-7

9-1768036-9

STB01-8-8

1768037-3

STB01-BLANK-0

1768037-6

STB01-BLANK-1

1768037-7

STB01-BLANK-2

1768037-8

STB01-BLANK-3

1768037-9

STB01-BLANK-5

1-1768037-0

STB01-BLANK-6

1-1768037-1

STB01-BLANK-7

1-1768037-2

STD01W-0

380468-000

STD01W-1

036952-000

STD01W-2

880874-000

STD01W-3

261416-000

STD01W-4

886014-000

STD01W-5

472156-000

STD01W-6

697328-000

STD01W-7

115690-000

STD01W-8

695082-000

STD01W-9

524448-000

STD01W-A

543032-000

STD01W-B

667794-000

STD01W-BLANK

7-1768040-6

STD01W-C

490978-000

DESCRIPTION

PART NO.

STD01W-COLON

866186-000

STD01W-D

892212-000

STD01W-DOT

7-1768040-9

STD01W-E

306924-000

STD01W-EARTH

8-1768040-0

STD01W-F

564572-000

STD01W-G

476126-000

STD01W-H

773592-000

STD01W-I

744932-000

STD01W-J

558694-000

STD01W-K

300156-000

STD01W-L

069822-000

STD01W-M

797550-000

STD01W-MINUS

8-1768040-7

STD01W-N

825954-000

STD01W-P

003470-000

STD01W-PLUS

9-1768040-0

STD01W-Q

184430-000

STD01W-R

127474-000

STD01W-S

894140-000

STD01W-SLASH

435160-000

STD01W-T

381132-000

STD01W-U

764856-000

STD01W-V

117528-000

STD01W-W

019350-000

STD01W-X

165016-000

STD01W-Y

098122-000

STD01W-Z

030648-000

STD01Y-0

9-1768040-2

DESCRIPTION

PART NO.

STD01Y-1

9-1768040-3

STD01Y-2

9-1768040-4

STD01Y-3

9-1768040-5

STD01Y-4

9-1768040-6

STD01Y-5

9-1768040-7

STD01Y-6

9-1768040-8

STD01Y-7

9-1768040-9

STD01Y-8

1768041-1

STD01Y-9

1768041-2

STD01Y-A

1768041-3

STD01Y-AC

1768041-4

STD01Y-B

1768041-6

STD01Y-BLANK

1768041-7

STD01Y-C

1768041-9

STD01Y-COLON

1-1768041-0

STD01Y-D

1-1768041-1

STD01Y-DOT

1-1768041-3

STD01Y-E

1-1768041-4

STD01Y-EARTH

1-1768041-5

STD01Y-F

1-1768041-7

STD01Y-G

1-1768041-9

STD01Y-H

2-1768041-1

STD01Y-I

2-1768041-3

STD01Y-J

2-1768041-4

STD01Y-K

2-1768041-5

STD01Y-L

2-1768041-7

STD01Y-M

2-1768041-9

STD01Y-MINUS

3-1768041-0

STD01Y-N

3-1768041-2

DESCRIPTION

PART NO.

STD01Y-P

3-1768041-4

STD01Y-PLUS

3-1768041-5

STD01Y-Q

3-1768041-6

STD01Y-R

3-1768041-7

STD01Y-S

3-1768041-9

STD01Y-SLASH

4-1768041-0

STD01Y-T

4-1768041-1

STD01Y-U

4-1768041-2

STD01Y-V

4-1768041-3

STD01Y-W

4-1768041-4

STD01Y-X

4-1768041-5

STD01Y-Y

4-1768041-6

STD01Y-Z

4-1768041-7

THIS DRAWING IS A CONTROLLED DOCUMENT.

DIMENSIONS:

mm

TOLERANCES UNLESS OTHERWISE SPECIFIED:

0 PLC ± -

1 PLC ± -

2 PLC ± -

3 PLC ± -

4 PLC ± -

ANGLES ± -

FINISH -

MATERIAL

THERMOPLASTIC

DWN

A KEAN

17DEC2012

CHK

M APPELLO

17DEC2012

APVD

M APPELLO

17DEC2012

PRODUCT SPEC

—

APPLICATION SPEC

—

WEIGHT

—

CUSTOMER DRAWING

TE Connectivity

NAME

STB/STD MARKER WITH APPLICATOR

—

—

SIZE

A3

CAGE CODE

00779

DRAWING NO

1-1768041-3

RESTRICTED TO

—

SCALE

NTS

SHEET

3 OF 3

REV

1

1470-19 (3/11)

Mouser Electronics

Authorized Distributor

Click to View Pricing, Inventory, Delivery & Lifecycle Information:

[TE Connectivity:](#)

[STD01W-1](#)