

8

7

6

5

4

3

2

1

REVISIONS				
ZONE	LTR	ECN	DESCRIPTION	DATE
B	27054		NEW RELEASE.	1/5/93

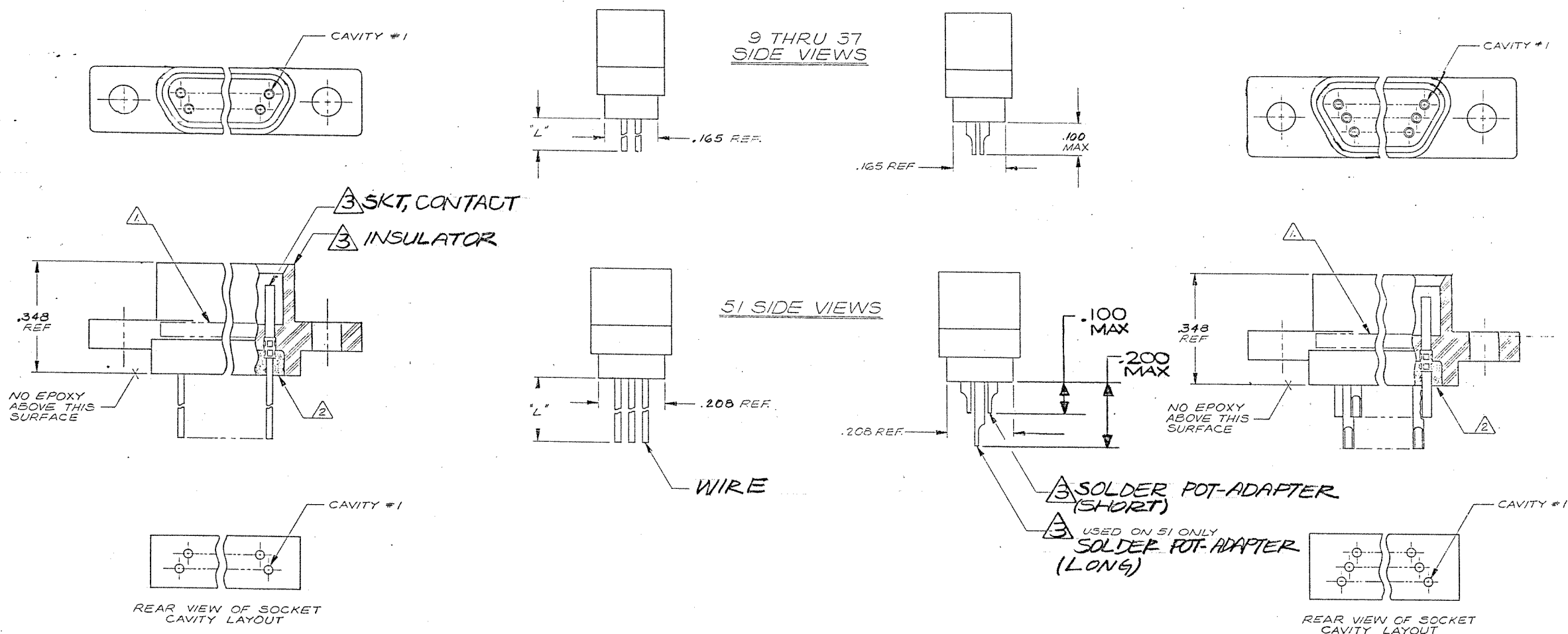
C Combine M & CD Dwg

D

C

B

A



9 THRU 37 CONFIGURATION

51 CONFIGURATION

(SHOW WITH SOLDER POT
TERMINATIONS FOR REFERENCE
ONLY. WIRE TERMINATIONS
ARE THE SAME CONFIGURATION)

NOTES: UNLESS OTHERWISE SPECIFIED

1. MARK "MALCO" OR MALCO LOGO, MILITARY PART NO. (e.g. M53513/07-#), CODE IDENT. NO., & DATE CODE WITH .047 MIN HIGH CHARACTERS IN APPROXIMATE LOCATION SHOWN.
2. EPOXY USING HYSOL # 4215 & 3561.

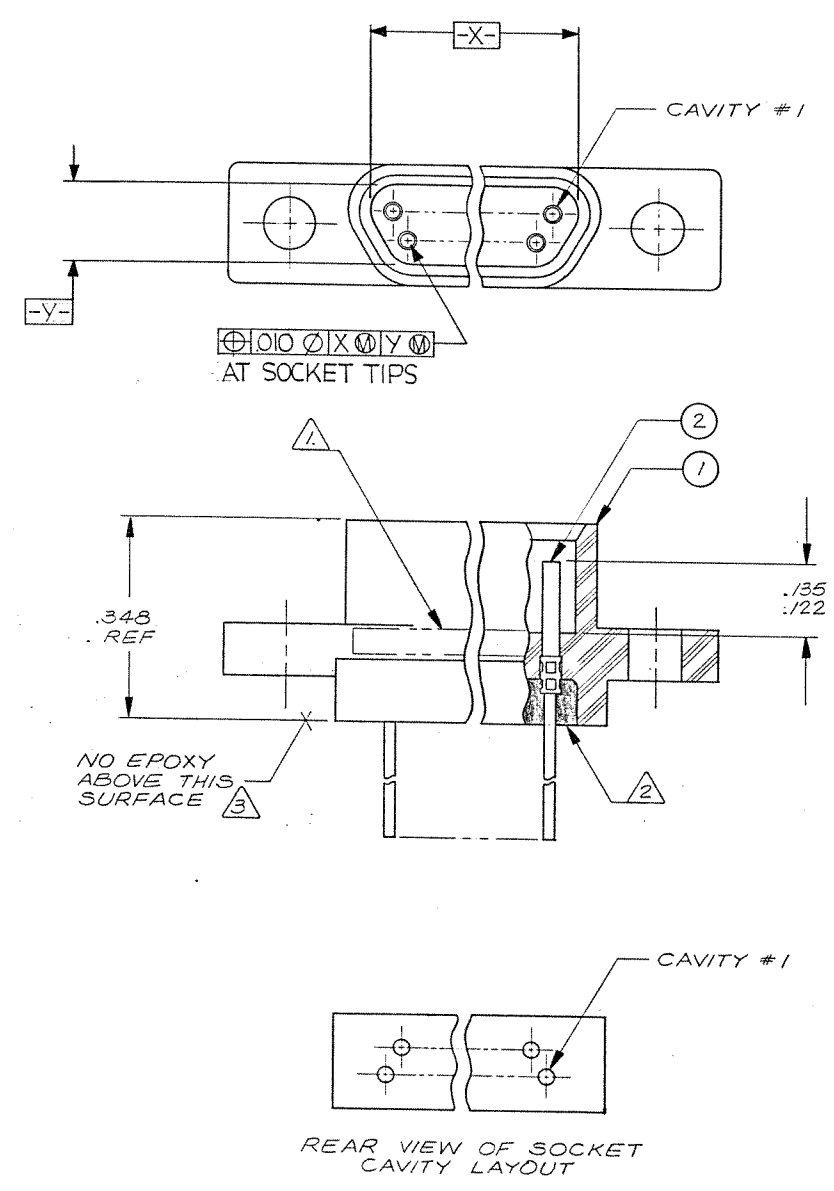
3. SOLDER POT: MATL: BRASS PER QQ-B-626, COMP 360, 1/2 HARD
FINISH: COPPER ALLOY/GOLD PLATED
SKT. CONTACT: MATL: COPPER ALLOY/GOLD PLATED
HOUSING: MATL: (R3) POLYPHENYLENE SULFIDE RYTON RA-04
(BR-68) PER MIL-M-24519, COLOR BROWN.

Tyco Customer Drawing 1-1532149-5

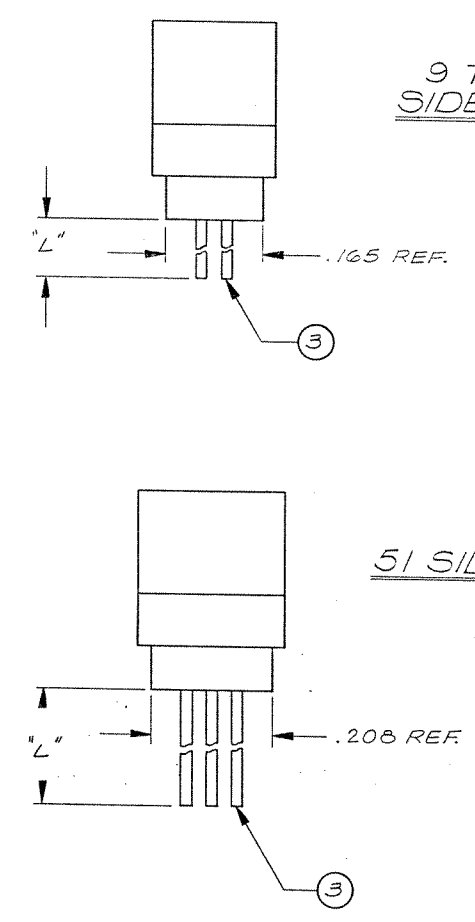
QTY REQD	CODE IDENT	PART OR IDENTIFYING NO.	NOMENCLATURE OR DESCRIPTION
PARTS LIST			
UNLESS OTHERWISE SPECIFIED DIMENSIONS ARE IN INCHES TOLERANCES ARE:		CONTRACT NO.	
FRACTIONS	DECIMALS	ANGLES	
±	.XX ±	±	
	.XXX ±		
MATERIAL		APPROVALS	DATE
		DRAWN	1/5/93
		CHECKED	
		PR. ENG.	7-5-93
		APP'D.	
FINISH		These drawings and specifications are the property of Microdot Inc. and shall not be reproduced or copied, in whole or in part, for the manufacture or sale of any article without written permission of Microdot Inc.	
NEXT ASSY		USED ON	
APPLICATION		DO NOT SCALE DRAWING	
		SCALE: NONE	
		SHEET / OF /	

MALCO A MICRODOT COMPANY, INC. 306 PASADENA AVE., SO. PASADENA, CALIF. 91030		PROD CODE 824
RACK & PANEL CONNECTOR, RCPT. MCD PER MIL-C-83513		CODE CD
SIZE D	CODE IDENT NO. 98278	DRAWING NO. 095-0000-0446

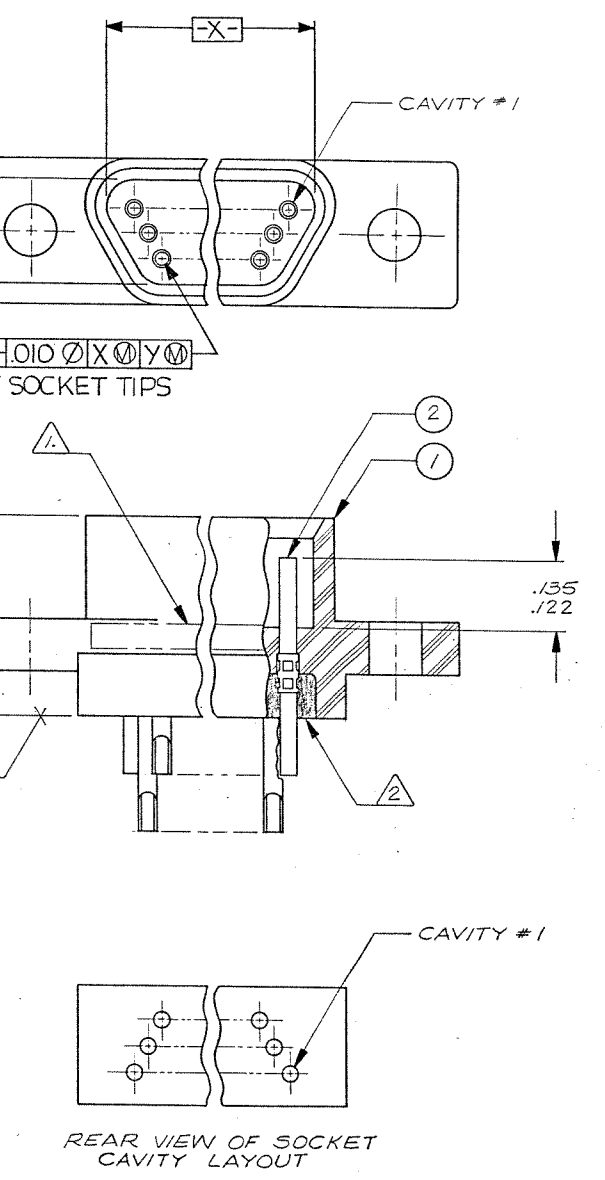
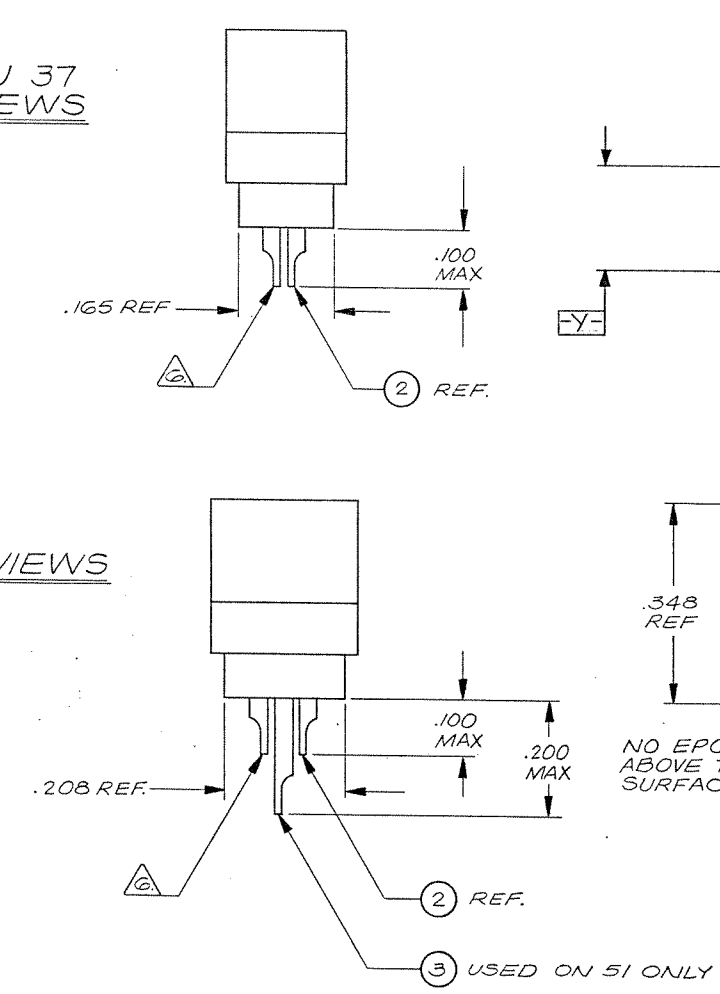
C Combine M & CD Dwg



9 THRU 37 CONFIGURATION



51 CONFIGURATION



51 CONFIGURATION

(SHOW WITH SOLDER POT TERMINATIONS FOR REFERENCE ONLY. WIRE TERMINATIONS ARE THE SAME CONFIGURATION)

NOTES: UNLESS OTHERWISE SPECIFIED

- MARK "MALCO" OR MALCO LOGO, MILITARY PART NO. (e.g. M83513/07-*), CODE IDENT. NO., & DATE CODE WITH .047 MIN HIGH CHARACTERS IN APPROXIMATE LOCATION SHOWN.
- EPOXY USING HYSOL # 4215 & 3561.
- EPOXY WICKING - UNINSULATED WIRE .050 MAX. INSULATED WIRE UP TO # 25 AWG .125 MAX. INSULATED WIRE # 24 AWG OR LARGER .200 MAX.
- CRIMP LEADS OR SOLDER POTS INTO CONTACTS PER MEP 302-05.
- NO SCRATCHES SHOWING BASE METAL PERMITTED ON SOLDER POTS.
- CHAMFER ON SOLDER POTS ARE TO BE PARALLEL WITH SIDES OF CONNECTOR WITHIN 10 DEGREES.

Tyco Customer Drawing 1-1532149-5

QTY REQD	CODE IDENT	PART OR IDENTIFYING NO.	NOMENCLATURE OR DESCRIPTION
PARTS LIST			
UNLESS OTHERWISE SPECIFIED DIMENSIONS ARE IN INCHES TOLERANCES ARE:		CONTRACT NO.	
FRACTIONS	DECIMALS	ANGLES	
\pm	.XX \pm	\pm	
	.XXX \pm		
MATERIAL	APPROVALS	DATE	
	DRAWN G. SAUER	5-17-82	
	CHECKED	5-18-82	
	PR. ENG.	5-18-82	
	APPD.		
FINISH	These drawings and specifications are the property of Microdot Inc. and are issued in strict confidence and shall not be divulged, be reproduced or copied, or used as the basis for the manufacture or sale of any article without written permission of Microdot Inc.		
NEXT ASSY	USED ON	SIZE	CODE IDENT NO.
		D	98278
APPLICATION	DO NOT SCALE DRAWING	DRAWING NO.	095-0000-0446
		SCALE	NONE
		SHEET	OF /

Mouser Electronics

Authorized Distributor

Click to View Pricing, Inventory, Delivery & Lifecycle Information:

[TE Connectivity:](#)

[M83513/09-A07](#)