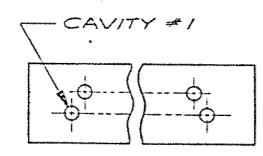
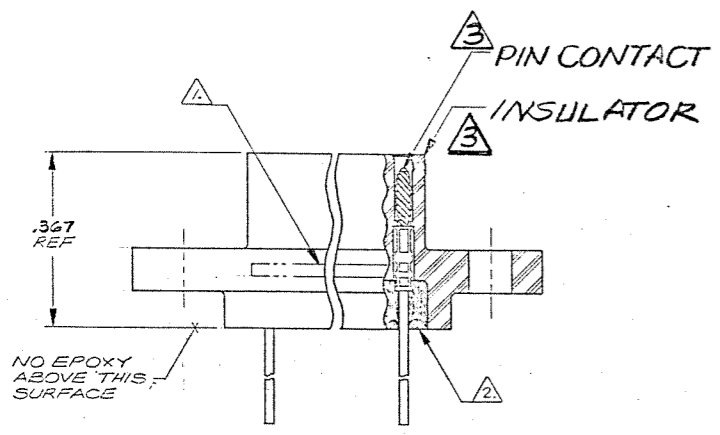
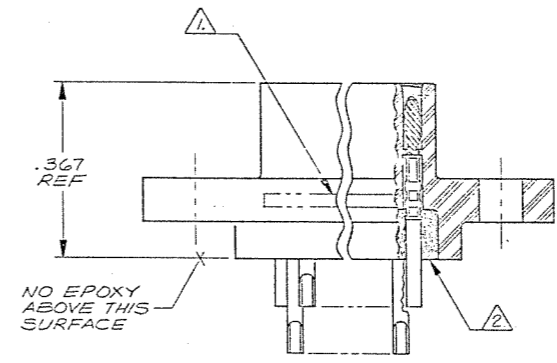
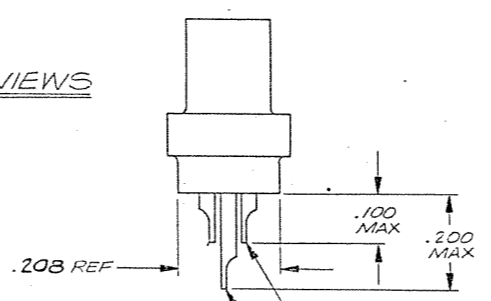
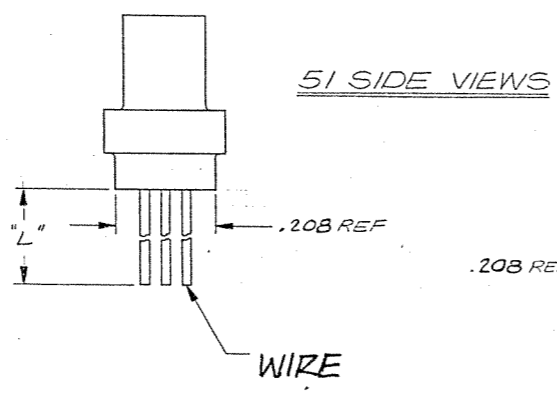
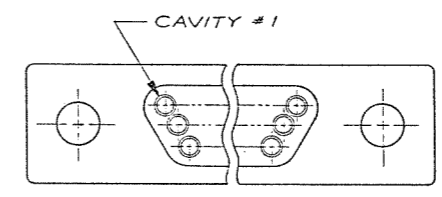
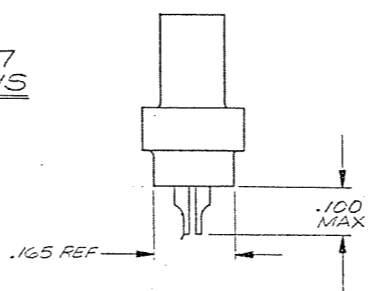
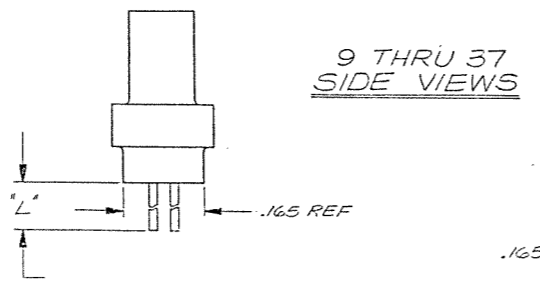
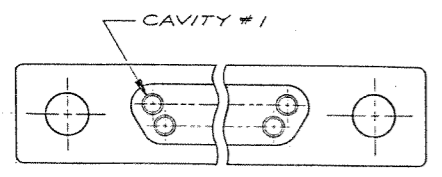
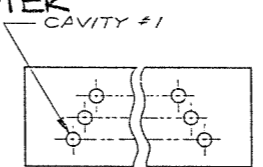


8 7 6 5 4 3 2 1

REVISIONS					
ZONE	LTR	ECN	DESCRIPTION	DATE	APPROVED
B1			REVISED PER ECO-11-005139	28MAR11	HMR



REAR VIEW OF PLUG CAVITY LAYOUT



REAR VIEW OF PLUG CAVITY LAYOUT

**9 THRU 37 CONFIGURATION**

(SHOW WITH WIRE TERMINATIONS FOR REFERENCE ONLY. SOLDER POT TERMINATIONS ARE THE SAME CONFIGURATION)

**51 CONFIGURATION**

(SHOW WITH SOLDER POT TERMINATIONS FOR REFERENCE ONLY. WIRE TERMINATIONS ARE THE SAME CONFIGURATION)

**NOTES: UNLESS OTHERWISE SPECIFIED**

- MARK "MALCO" OR MALCO LOGO, MILITARY PART NO. (e.g. MB3513/06-\*), CODE IDENT. NO., & DATE CODE WITH .047 MIN HIGH CHARACTERS IN APPROXIMATE LOCATION SHOWN.
- EPOXY USING HYSOL #4215 & 3561.

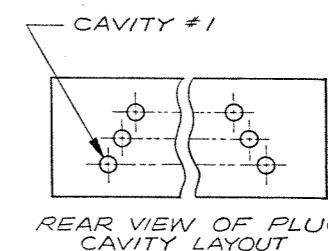
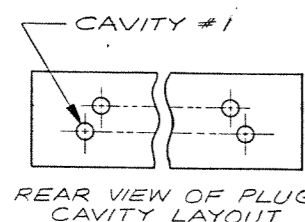
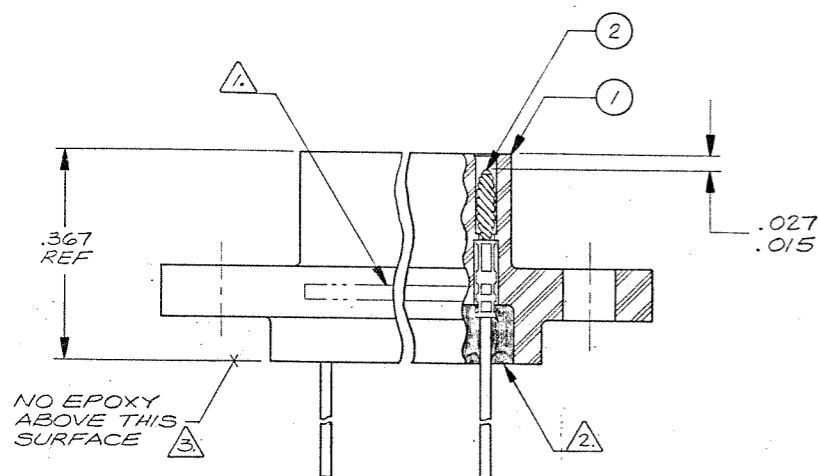
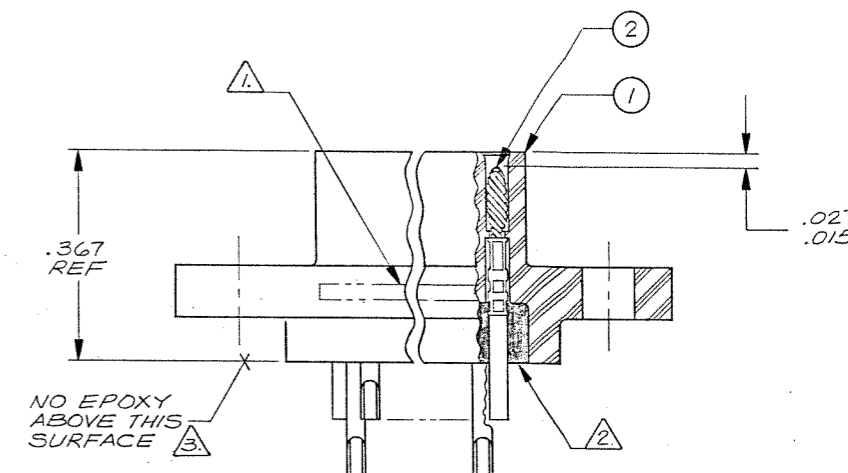
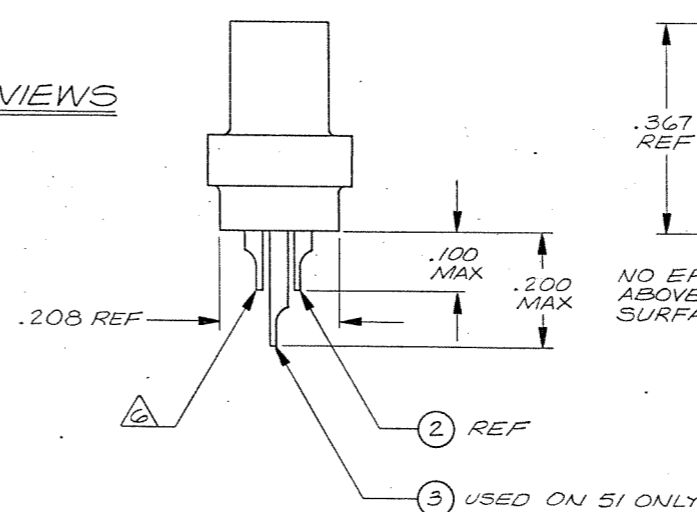
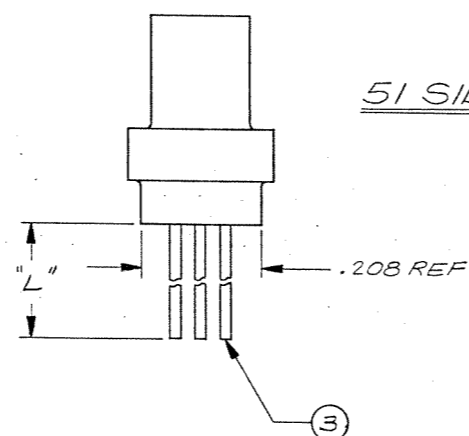
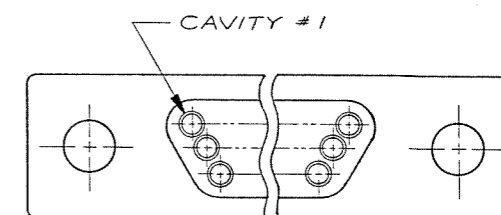
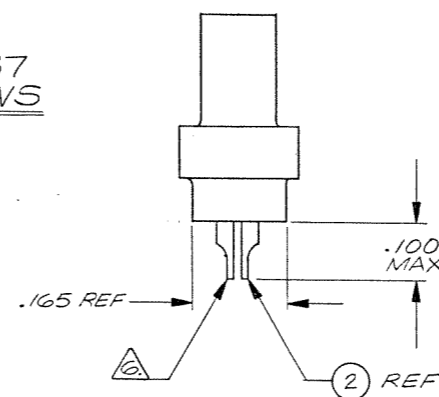
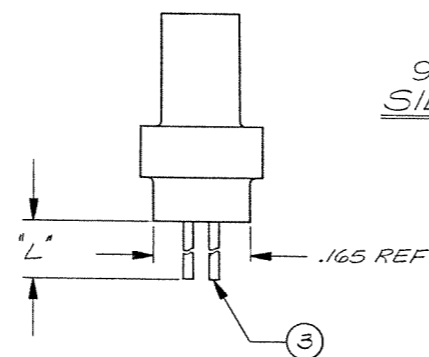
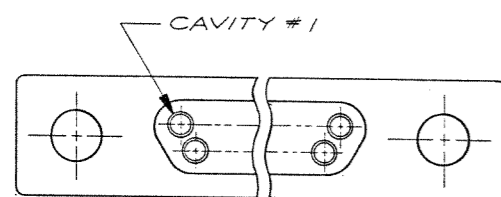
- SOLDER POT; MATL: BRASS PER QQ-B-626, COMP 360, 1/2 HARD**  
**FINISH: COPPER ALLOY/GOLD PLATED**
- PIN CONTACT; MATL: COPPER ALLOY/GOLD PLATED**
- HOUSING; MATL: (R3) POLYPHENYLENE SULFIDE RYTON 4-04 (BR-68) PER MIL-M-24519, COLOR BROWN**

**TE Connectivity Drawing 1-1532149-4**

QTY	CODE	PART OR IDENTIFYING NO.	NOMENCLATURE OR DESCRIPTION
			<b>TE</b> TE Connectivity
			RACK & PANEL CONNECTOR, PLUG MCD PER MIL-C-83513
			SIZE: D 98278 DRAWING NO: 1-1532149-4
			SCALE: NONE SHEET / OF /

8 7 6 5 4 3 2 1

REVISIONS					
ZONE	LTR	ECN	DESCRIPTION	DATE	APPROVED
			SEE SHEET 1		



**9 THRU 37 CONFIGURATION**

(SHOW WITH WIRE TERMINATIONS FOR REFERENCE ONLY. SOLDER POT TERMINATIONS ARE THE SAME CONFIGURATION)

**51 CONFIGURATION**

(SHOWN WITH SOLDER POT TERMINATIONS FOR REFERENCE ONLY. WIRE TERMINATIONS ARE THE SAME CONFIGURATION)

**NOTES: UNLESS OTHERWISE SPECIFIED**

- 1. MARK "MALCO" OR MALCO LOGO, MILITARY PART NO. (e.g. M83513/06-\*), CODE IDENT. NO., & DATE CODE WITH .047 MIN HIGH CHARACTERS IN APPROXIMATE LOCATION SHOWN.
- 2. EPOXY USING HYSOL # 4215 & 3561.
- 3. EPOXY WICKING - UNINSULATED WIRE — .050 MAX.  
INSULATED WIRE UP TO # 25 AWG — .125 MAX.  
INSULATED WIRE # 24 AWG OR LARGER — .200 MAX.
- 4. CRIMP LEADS OR SOLDER POTS INTO CONTACTS PER MEP 302-05.
- 5. NO SCRATCHES SHOWING BASE METAL PERMITTED ON SOLDER POTS.
- 6. CHAMFER ON SOLDER POTS ARE TO BE PARALLEL WITH SIDES OF CONNECTOR WITHIN 10 DEGREES.

**TE Connectivity Drawing 1-1532149-4**

QTY REQD	CODE IDENT	PART OR IDENTIFYING NO.	NOMENCLATURE OR DESCRIPTION	CONTRACT NO.	PROD. CODE
					824
PARTS LIST				TE Connectivity	
UNLESS OTHERWISE SPECIFIED DIMENSIONS ARE IN INCHES TOLERANCES ARE:				APPROVALS	
FRACTIONS DECIMALS ANGLES				DATE	
± .XX ± ±				DRAWN G SAUER 5-12-82	
MATERIAL				CHECKED E Jhon 5-17-82	
FINISH				PR. ENG. [Signature] 5-17-82	
DO NOT SCALE DRAWING				APPD. [Signature]	
APPLICATION				SIZE CODE IDENT NO. DRAWING NO.	
				D 98278 1-1532149-4	
				SCALE NONE	
				SHEET / OF /	

# Mouser Electronics

Authorized Distributor

Click to View Pricing, Inventory, Delivery & Lifecycle Information:

[TE Connectivity:](#)

[M83513/06-A](#)