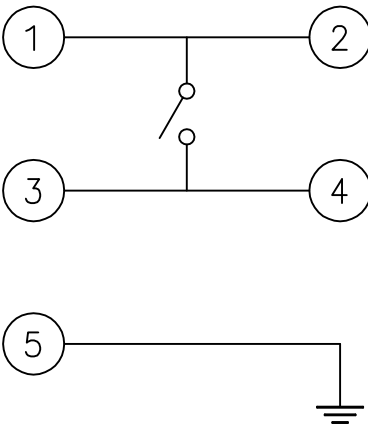
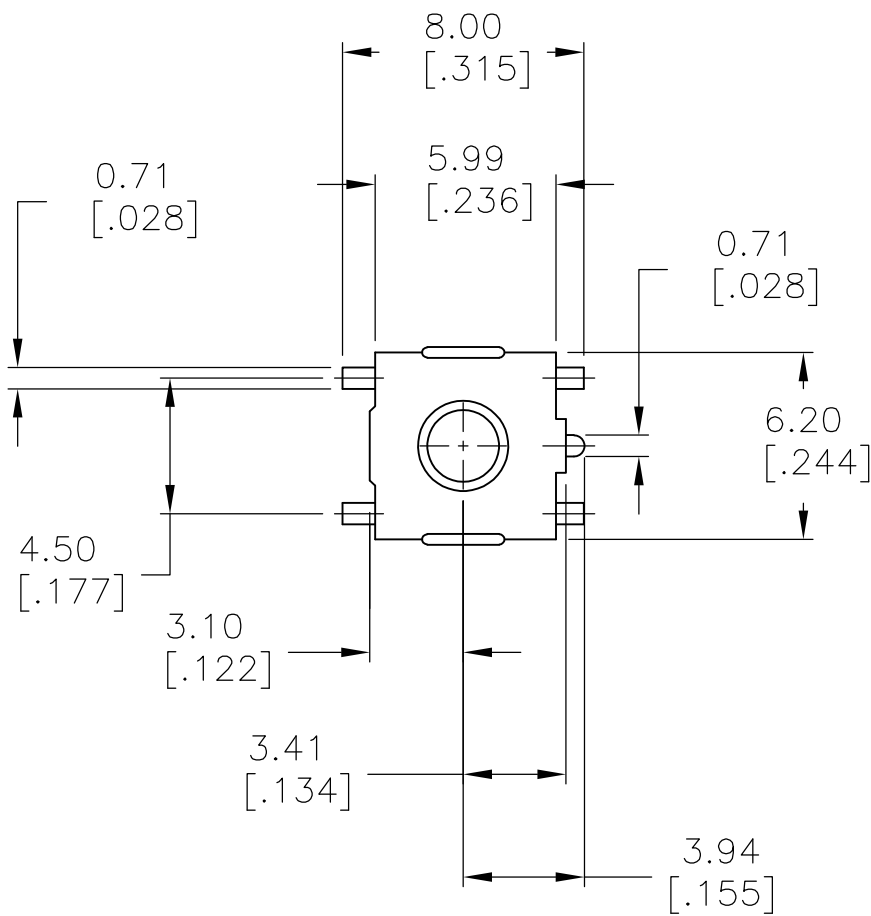
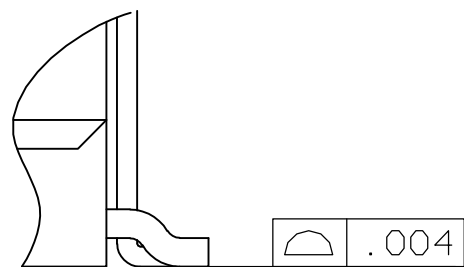
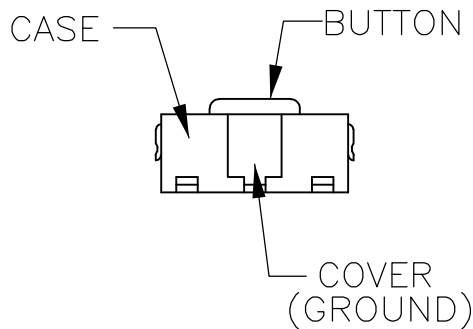
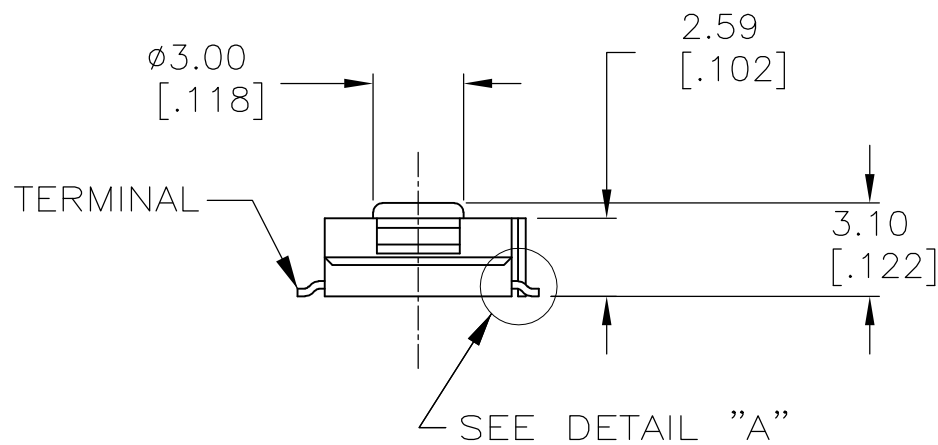


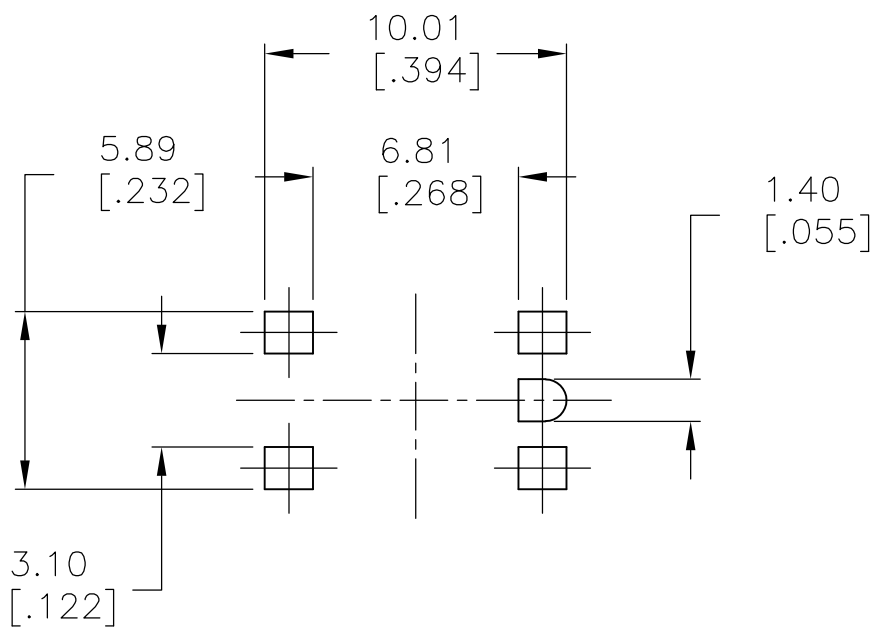
LOC	DIST	REVISIONS					
AD	00	P	LTR	DESCRIPTION	DATE	DWN	APVD
			E	REVISED PER ECO-15-016664	23NOV2015	NK	RH



CIRCUIT DIAGRAM



DETAIL "A"  
SCALE 15:1



P.C.B. FOOTPRINT

SPECIFICATIONS:

CASE: PPS, 94V0, BLACK.  
COVER: COPPER ALLOY-TIN PLATE.  
ACTUATOR BUTTON: SEE TABLE, COLOR: SEE TABLE.  
MOVING CONTACT: COPPER ALLOY, SILVER FINISH.  
FIXED CONTACT/TERMINAL: COPPER ALLOY, SILVER FINISH.

ELECTRICAL:  
MAX CONTACT RATING: 50MILLIAMPS@24V DC  
MIN CONTACT RATING: 10MICROAMPS@1V DC  
CONTACT RESISTANCE: 100 MILLIOHMS MAX.  
INSULATION RESISTANCE: 100 MEGOHMS MIN. @ 100 VDC.  
DIELECTRIC STRENGTH: 500 VAC 50/60 HZ FOR 1 MINUTE  
LIFE EXPECTANCY: 100,000 CYCLES.


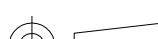
MECHANICAL:  
ACTUATION FORCE: SEE CHART.  
ACTUATION TRAVEL: 0.25 +0.20/-0.10 [.010 +.008/-0.004]

ENVIRONMENTAL:  
OPERATING TEMPERATURE: -35°C TO +85°C  
STORAGE TEMPERATURE: -35°C TO +85°C  
SOLDER HEAT RESISTANCE PER 109-201, COND B.

SOLDERABILITY:  
SPECIFICATION EIA-364-52, CLASS 1, CATEGORY 2

- ALL MATERIALS AND FINISHES SHALL COMPLY WITH EU DIRECTIVE 2002/95/EC OF 27JAN2003 (ROHS)
- TAPE AND REEL PACKAGING PER EIA-481

PART NUMBER	PART NUMBER	ACTUATOR MATERIAL	ACTUATOR BUTTON COLOR	ACTUATION FORCE	PACKAGING
1-1437565-6	FSM1LP	PPA UL94HB	BLACK	160±50 gm.	BULK
1-1437565-9	FSM1LPTR	PPA UL94HB	BLACK	160±50 gm.	TAPE & REEL
1-1437565-7	FSM1LPA	PPS UL94V-0	BROWN	260±50 gm.	BULK
1-1437565-8	FSM1LPATR	PPS UL94V-0	BROWN	260±50 gm.	TAPE & REEL

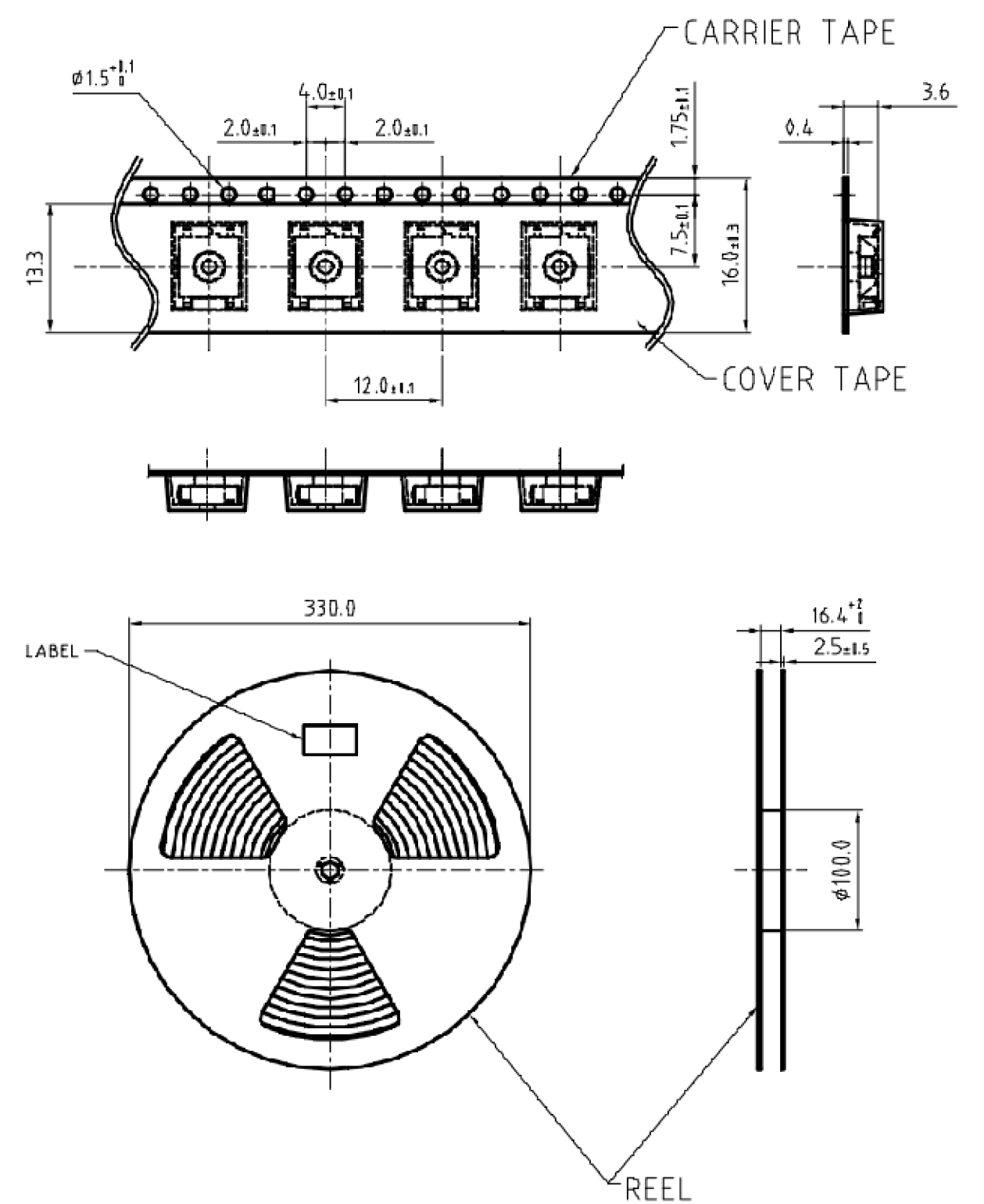
THIS DRAWING IS A CONTROLLED DOCUMENT.		DWN M.BINNER 13MAR2007	 TE Connectivity			
DIMENSIONS: mm [INCHES]		CHK M.SARVER 20MAR2007				
	TOLERANCES UNLESS OTHERWISE SPECIFIED:		NAME  TACTILE SWITCH FSM1LP			
	0 PLC ± - 1 PLC ± - 2 PLC ± 0.30[.012] 3 PLC ± - 4 PLC ± - ANGLES ± -					
	MATERIAL -					
		APVD M.SARVER 20MAR2007	PRODUCT SPEC -		SIZE A2	
		APPLICATION SPEC -	WEIGHT -		CAGE CODE 00779	DRAWING NO C=1-1437565-8
		CUSTOMER DRAWING			RESTRICTED TO -	
		SCALE 4:1		SHEET 1 of 2		REV E

D

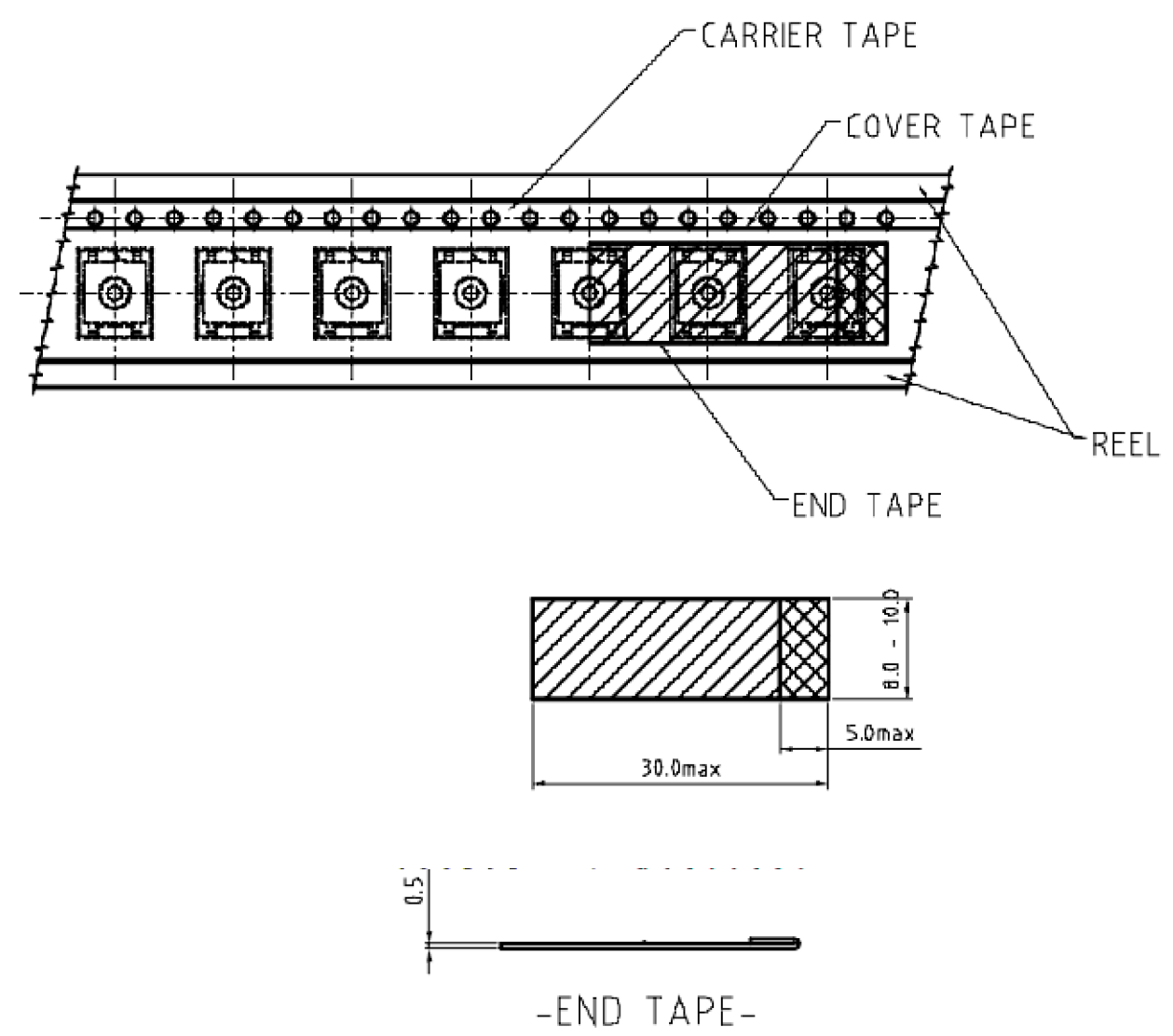
C

B

A



-THE DIMENSION OF CARRIER TAPE, COVER TAPE AND REEL-



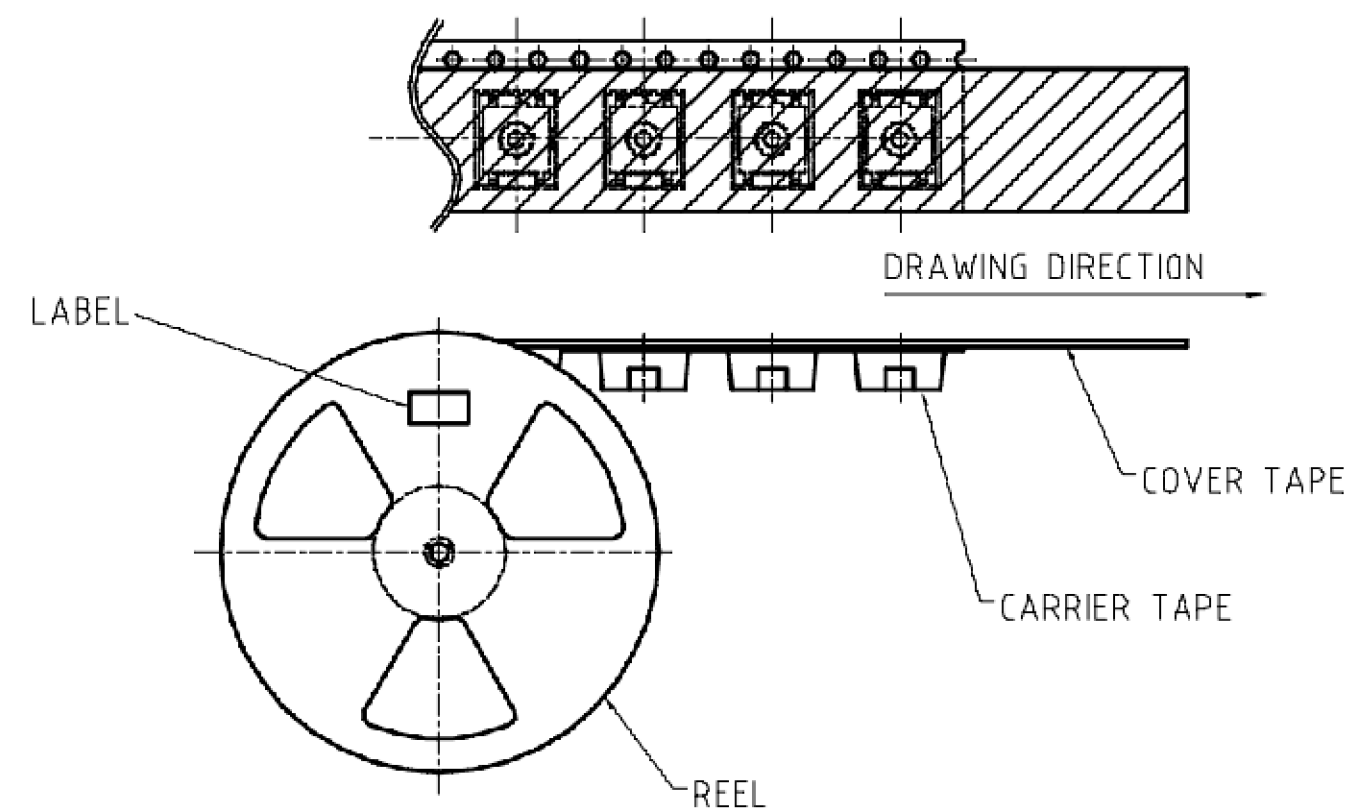
-END TAPE-

D

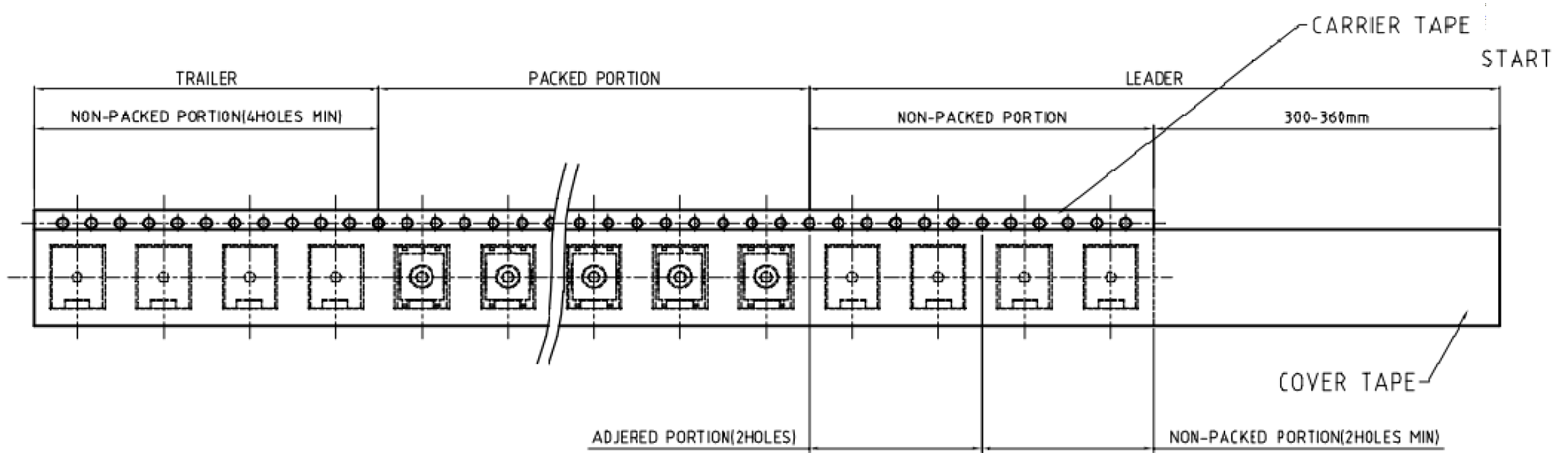
C

B

A



-THE DIRECTION OF PILOT HOLES-



THIS DRAWING IS A CONTROLLED DOCUMENT.

DIMENSIONS:  
mm [INCHES]

TOLERANCES UNLESS OTHERWISE SPECIFIED:

0 PLC	±	-
1 PLC	±	-
2 PLC	±	0.30[.012]
3 PLC	±	-
4 PLC	±	-
ANGLES	±	-
FINISH	-	-

MATERIAL

-

DWN  
M.BINNER  
13MAR2007

CHK  
M.SARVER  
20MAR2007

APVD  
M.SARVER  
20MAR2007

PRODUCT SPEC

APPLICATION SPEC

WEIGHT

-

CUSTOMER DRAWING

TE Connectivity

TACTILE SWITCH  
FSM1LP

SIZE  
A2

CAGE CODE  
00779

DRAWING NO  
C=1-1437565-8

RESTRICTED TO

-

SCALE  
4:1

SHEET  
2 OF 2

REV  
E

# Mouser Electronics

Authorized Distributor

Click to View Pricing, Inventory, Delivery & Lifecycle Information:

[TE Connectivity:](#)

[FSM1LPATR](#)