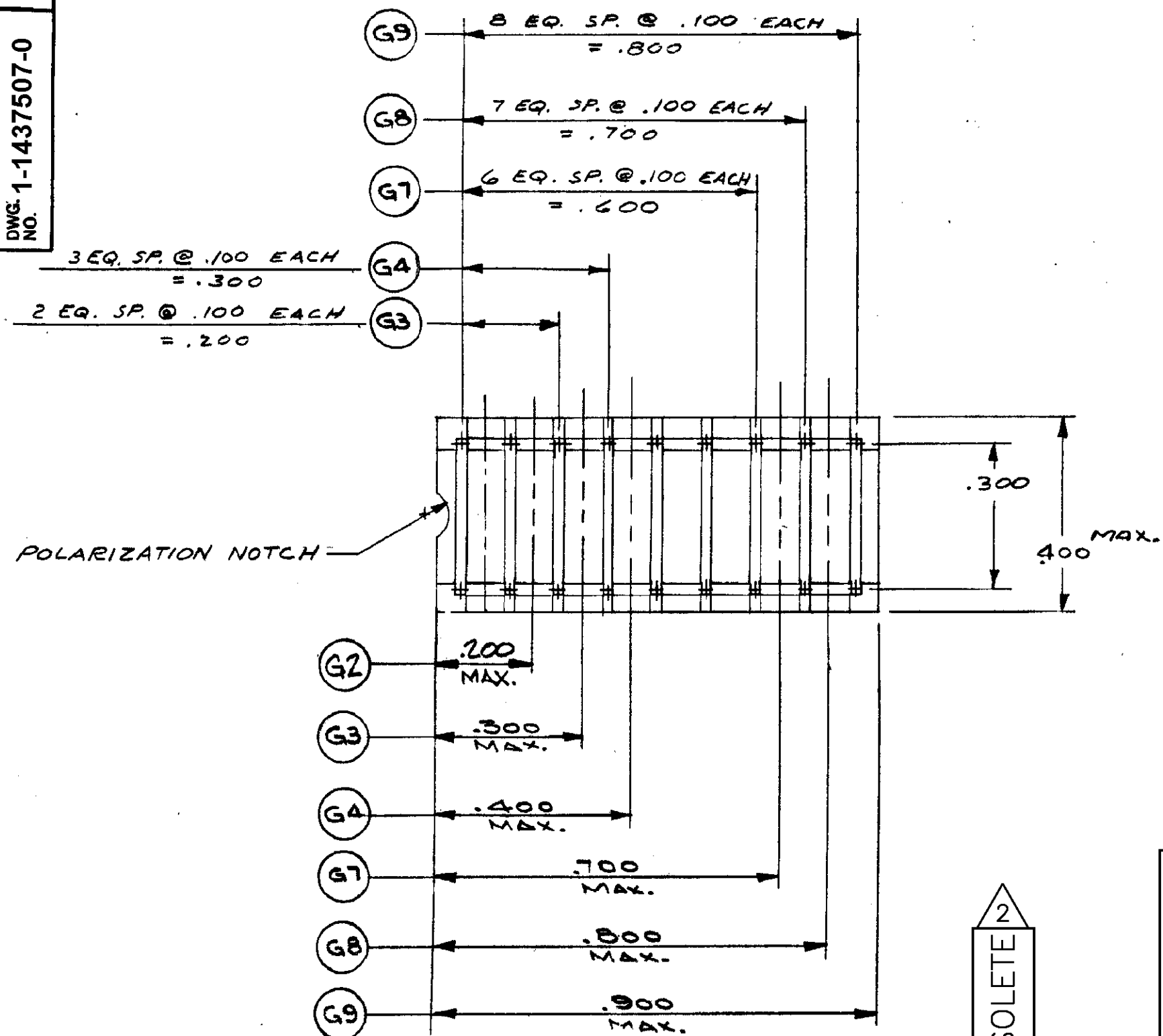
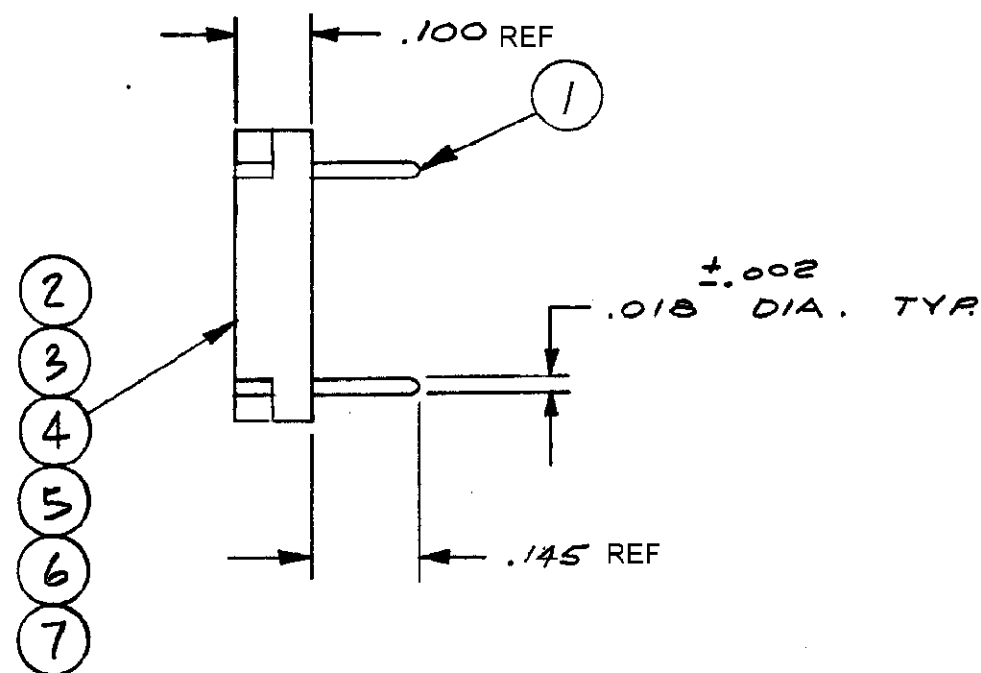


REV.
DWG. 1-1437507-0
NO.

NOTES:

1. MATERIAL AND FINISH:
 INSULATOR — THERMOPLASTIC POLYESTER UL RATED 90 V-0; COLOR-BLACK
 (G) CONTACT — PHOSPHOR BRONZE, GOLD OVER NICKEL PLATE
 (GT) CONTACT — PHOSPHOR BRONZE, TIN PLATE.

2. OBSOLETE PARTS: OBSOLETE CIS STREAMLINING PER D.RENAUD/D.SINISI



PART NO.S														
N/A	1-1437507-2	1-1437507-1	N/A	1-1437507-2	2-1437507-0	1-1437507-8	1-1437507-6	1-1437507-4	1-1437507-0	2-1437507-1	1-1437507-9	1-1437507-7	1-1437507-5	1-1437507-3
9	8	7												
			2	7	8	7	4	3						
			1						1					
1				1						1				
					1						1			
		1				1						1		
							1						1	
								1						1
G25	G24	G23	G22	G21	G20	G19	G18	G17	G16	G15	G14	G13	G12	G11
QUANTITY														
DESCRIPTION														
SHORTING PIN														
SHORTING PIN														
INSULATOR														
INSULATOR														
INSULATOR														
INSULATOR														
INSULATOR														
INSULATOR														
SHORTING PIN														

UNLESS OTHERWISE SPECIFIED
 DIMENSIONS ARE IN INCHES
 TOLERANCES ON
 FRACTIONS DECIMALS ANGLES
 REF

MATERIAL:
 — 67 —

FINISH:
 — 67 —

ORIGINAL DATE
 OF DRAWING: 4-4-73

DRAWN: RJS DATE: 4-4-74

CHECKED: K.J.H. DATE: 4-5-74

APPROVED: R.J.H. DATE: 4-5-74

CODE IDENT. NO. 91506 DWG. SIZE C

NEXT ASSY.

TE TE Connectivity

TITLE:
 PROGRAMMING PLUG

DWG. NO. REV.

1-1437507-0 A1

SCALE: 4X1 SHEET 1 OF 1

A1 REVISED PER ECO-11-005140 RK HMR
 LTR (REVISION RECORD) DR CHK DATE

CUSTOMER DWG.

Mouser Electronics

Authorized Distributor

Click to View Pricing, Inventory, Delivery & Lifecycle Information:

[TE Connectivity:](#)

[8136-475G23](#)