

THIS DRAWING IS UNPUBLISHED.
VERTRAULICHE UNVERÖFFENTLICHTE ZEICHNUNG

RELEASED FOR PUBLICATION ,1997
FREI FUER VEROFFENTLICHUNG

MATED WITH:	
PASSEND ZU:	

Bg 1

© COPYRIGHT 1997

BY AMP INCORPORATED. ALL RIGHTS RESERVED.
ALLE RECHTE VORBEHALTEN

LOC

AI

	DIST
--	------

P	
---	--

LT

A

REVISIONS

ÄNDERUNGEN

DESCRIPTION

BESCHREIBUNG

DATE _____

DWN

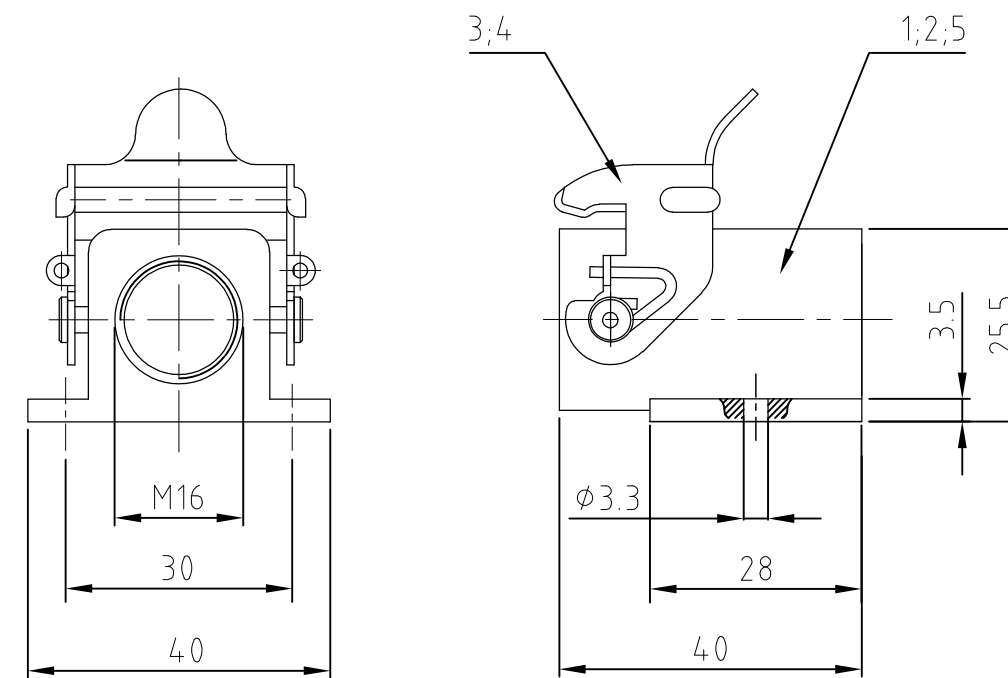
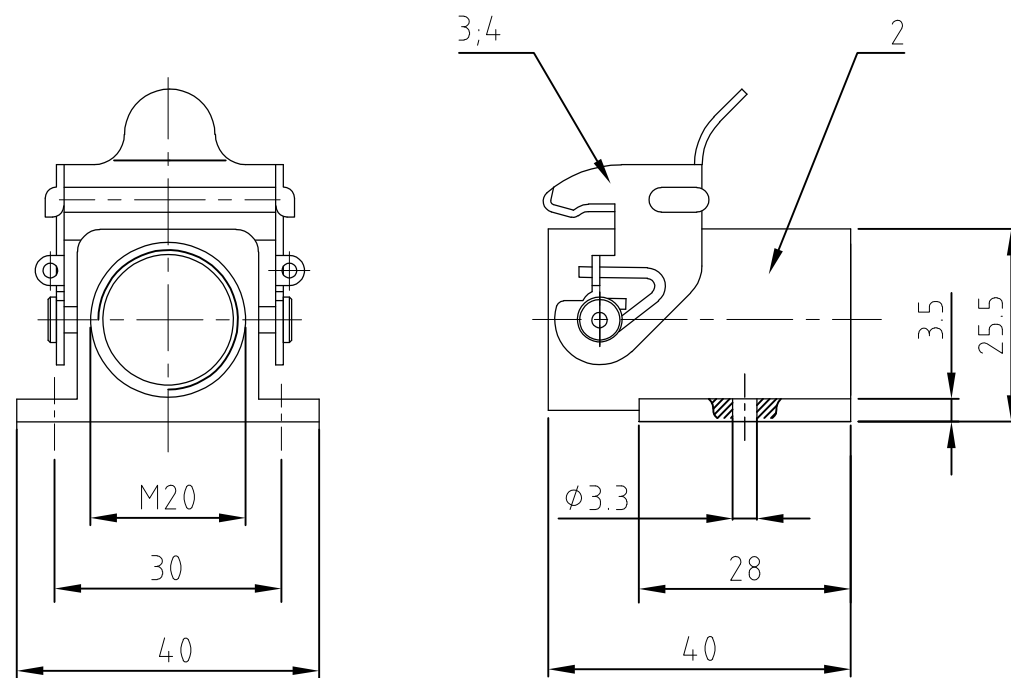
APVD

17.01.08

SR

ST

Text for packaging corrected ECR-08-001492




Notes

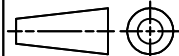
1 Material: zink diecast

△₂ Surface: - varnish grey
- varnish black

3 Varnish on the inside not necessarily

△₄ Special packing
Packaging quantity 100 pieces

 Packaging quantity 10 pieces

1					surface mounted housing side entry	zink diecast	blue pasivation	without varnish	5	
			1		side clip	stainless steel			4	
1	1	1		1	side clip	steel	zink plated	blue	3	
			1		surface mounted housing side entry	zink diecast		black	2	
	1	1		1	surface mounted housing side entry	zink diecast		grey	1	
0-5	0-4	0-3	0-2	0-1	DESCRIPTION / BENENNUNG	MATERIAL	SURFACE / OBERFLÄCHE	COLOR / FARBE	ITEM NO. POS.	NOTES
5	4	5	5	5	ORDERING TEXT / BESTELLTEXT <div><div><div><div>THIS DRAWING IS A CONTROLLED DOCUMENT FOR AMP INCORPORATED. IT IS SUBJECT TO CHANGE AND THE CONTROLLING ENGINEERING ORGANIZATION SHOULD BE CONTACTED FOR THE LATEST REVISION. DIESES ZEICHNUNGSDOKUMENT WIRD DURCH AMP INCORPORATED KONTROLLIERT. ÄNDERUNGEN, DIE DEM TECHNISCHEN FORTSCHRITT DIENEN, SIND VORBEHALTEN. DEN JEWELIGS LETZTGÜLTIGEN ÄNDERUNGSSTAND ERFAHREN SIE AUF ANFRAGE.</div><div><div>DIMENSIONS: DIMENSIONEN: mm</div><div></div></div><div><div>TOLERANCES UNLESS OTHERWISE SPECIFIED: ALLGEMEINTOLERANZEN n. ISO 8015 n. ISO 2768 - mH - E n. DIN 16901 - 140 0 PLC # 1 PLC # 2 PLC # 3 PLC # ANGLES / WINKEL # FINISH / OBERFLÄCHE / FARBE</div><div><div>1</div><div>2</div></div></div></div></div><div><div>DWN Schneider15.08.01</div><div>CHK Schnurpfeil15.08.01</div><div>APVD -</div><div>PRODUCT SPEC PRODUKTSPEZ. -</div><div>APPLICATION SPEC VERARBEITUNGSSPEZ. -</div><div>WEIGHT GEWICHT -</div></div><div><div>HTS Elektrotechnik 53819 Neunkirchen, Germany</div><div>NAME SURFACE MOUNTED HOUSING SIDE ENTRY Sockelgehäuse HA.3.1.M16</div><div><div>SIZEA3</div><div>CAGE CODE00779</div><div>DRAWING NO ZEICHNUNGS-NR. C=1106404</div><div>RESTRICTED TO NUR FÜR -</div></div><div><div>CUSTOMER DRAWING</div><div>/KUNDENZEICHNUNG</div><div>MASSTAB1:1</div><div>BLATT1</div><div>OF VON1</div><div>REV A8</div></div></div></div> </					

Mouser Electronics

Authorized Distributor

Click to View Pricing, Inventory, Delivery & Lifecycle Information:

[TE Connectivity:](#)

[1106404-3](#)