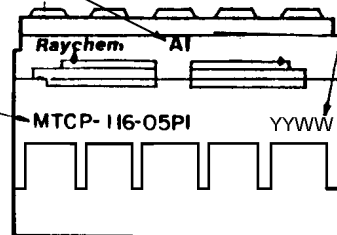


REVISIONS			DATE	APPROVED
LTR	DESCRIPTION			
B	RELEASED FOR PRODUCTION PER ECN T-013274		89 Nov 29	B
C	REVISE PER DCR# T-22766		4/16/99	M.HIGGY

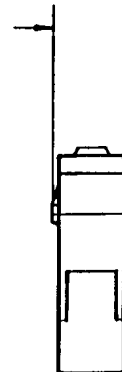
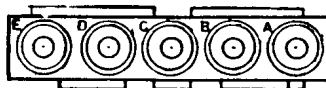


1. HOUSING ORIENTATION KEY

DATE CODE



RAYCHEM PART NO.



.260 MAX. (6.60)

.750 MAX. (19.05)

INTERFACIAL SEAL

RETENTION CLIP

PLASTIC INSERT

GROMMET

1.040 MAX. (26.42)

NOTES

1. THIS INSERT IS DESIGNED FOR USE IN RAYCHEM CONNECTOR HOUSINGS MTC 100-JH1-XXX OR MTC 100-JH2-XXX (SEE RAYCHEM INFORMATION DRAWING D-659-0097 AND HOUSING SCD'S FOR FURTHER DETAILS)

2. USE MIL-C-38999 SERIES 2 SIZE 16 CONTACTS OR EQUIVALENT. REFERENCE D-659-0097 FOR INSERTION/REMOVAL TOOLS, SEALING PLUGS AND CRIMP TOOLS WHEN APPLICABLE. THESE COMPONENTS ARE TO BE ORDERED SEPARATELY.

3. GROMMET DESIGNED TO SEAL ON WIRES HAVING AN INSULATION DIAMETER OF .065 IN. (1.65 MM) TO .109 IN. (2.77 MM)

4. PERFORMANCE:
THIS PRODUCT MEETS THE REQUIREMENTS OF RAYCHEM SPECIFICATION D-6115

5. MATERIALS:

- A) PLASTIC INSERT
- B) GROMMET
- C) INTERFACIAL SEAL
- D) RETENTION CLIP

HIGH GRADE POLYARYLENE THERMOPLASTIC
FLUROSILICONE PER MIL-R-25988
FLUROSILICONE PER MIL-R-25988
BERYLLIUM COPPER 172 PER QQ-C-533

6. WEIGHT: 0.007 lbs [2.980 Grams] MAXIMUM.

If this document is printed it becomes uncontrolled.
Check with the web for latest revision.

SPECIFICATION CONTROL DRAWING

DRAWN	ALEXANDER	Raychem <small>RAYCHEM CORPORATION 300 CONSTITUTION DRIVE MENLO PARK, CALIFORNIA 94025</small>	
CHECKED	B		
APPROVED	Plain 10-12-84		
APPROVED	Lamun 10-24-84		
CAD NAME: T22766.TIF		TITLE INSERT, PIN, PRIMARY 5 #16 CAVITIES POWER BLOCK CONNECTOR TEMPERATURE RATING 125°C MTC SERIES	
UNLESS OTHERWISE SPECIFIED DIMENSIONS ARE IN INCHES. METRIC DIMENSIONS ARE IN PARENTHESIS		SIZE B	CODE IDENT. NO. 06090
DO NOT SCALE THIS DRAWING		DWG. NO. MTCP-116-05PI	C
		WEIGHT	SHEET OF

Mouser Electronics

Authorized Distributor

Click to View Pricing, Inventory, Delivery & Lifecycle Information:

[TE Connectivity:](#)

[812387N004](#)