











## HPC 200A CONNECTOR

TE Connectivity (TE)'s HPC Series focuses on Battery Energy Storage System (BESS) to provide the high safety and reliability solution with one pole 200A/1500V high current connector.

Bringing the one-piece molding contact, HPC 200A Connector provides excellent temperature rise control capability.

Meanwhile, HPC 200A Connector installs with high performance temperature sensor (optional) to enable 24Hrs system safety monitor. The smart locking system with 180° in-line design, provides 360° rotation, 12 angles of locking with each 30° degrees, quick lock and press to release function to enable convenient and fast assembly of large volume connectors on site.

### BENEFITS AND FEATURE

One piece contact	360° rotation	180°in-line locking	Sensor integration
 <p>Reliability: Excellent temperature rise control</p>	 <p>Flexible: enable flexible cable assembly</p>	 <p>Smart locking system enable easy unlocking in field</p>	 <p>Enable intelligent safety monitoring</p>
Finger proof	12 angles locking	IP67	Two colors
 <p>Protect error finger touch for safety operation in field</p>	 <p>Flexible direction select and fixed matching to prevent rotation</p>	 <p>Safety and reliability for outdoor use</p>	 <p>Visualization to avoid wrong plugging</p>

## HPC 200A Connector

### APPLICATIONS

- Battery energy storage system

### ELECTRICAL

- 1500V
- 200A

### MECHANICAL

- Quick lock

### MATERIALS

- PA66

### PRODUCT COMPLIANCE / APPROVALS

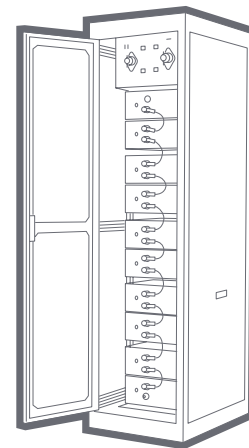
- Compliance RoHS & REACH
- Cu

### STANDARDS & SPECIFICATIONS

- IEC 61984 / EN 61984
- UL 4128
- 108-137616
- 114-137616
- 501-137616

### ENVIRONMENTAL

- EN 60512
- EN 60529
- EN 61373

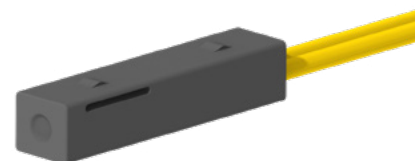


### PART NUMBER LIST

Part Number	Type	Description	Color
<a href="#">H101100130A-000</a>	Receptacle	HPC-200-M-R-BK-01	Black
<a href="#">H1111001301-000</a>	Plug	HPC-200-050-F-P-BK-01	Black
<a href="#">H101100030A-000</a>	Receptacle	HPC-200-M-R-OR-01	Orange
<a href="#">H1111000301-000</a>	Plug	HPC-200-050-F-P-OR-01	Orange

### APPLICABLE SENSOR (OPTIONAL)

Part Number	Description
<a href="#">20026452-00</a>	NTC Sensor, High Power Terminal



Part Number	Type			
	Min.	Nom.	Max.	Unit.
Resistance (NTC) @ +25 °C	-	98630	-	[Ohm]
Resistance (NTC) @ +25 °C	-	35390	-	[Ohm]
Tolerance (NTC) @ +25 °C	-1	-	-1	[%]
Beta Value (NTC) 25/100	-	3950	-	[K]
Tolerance on Beta Value (NTC)	-1	-	-1	[%]
Dissipation Constant (NTC)	2	-	-	[mW/°C]
Time response from 25 °C to +100 °C water (63.2% span)	-	-	8	[s]
Operating Temperature*	-40	-	+200	[°C]
Operating Temperature Probe Head (20mm)	-40	-	+200	[°C]

**te.com**

© 2023 TE Connectivity. All Rights Reserved.

TE Connectivity, TE connectivity (logo) and Every Connection Counts are trademarks owned or licensed by TE Connectivity.

All other logos, products and/or company names referred to herein might be trademarks of their respective owners.

While TE has made every reasonable effort to ensure the accuracy of the information in this brochure, TE does not guarantee that it is error-free, nor does TE make any other representation, warranty or guarantee that the information is accurate, correct, reliable or current. TE reserves the right to make any adjustments to the information contained herein at any time without notice. TE expressly disclaims all implied warranties regarding the information contained herein, including, but not limited to, any implied warranties of merchantability or fitness for a particular purpose. The dimensions in this catalog are for reference purposes only and are subject to change without notice. Specifications are subject to change without notice. Consult TE for the latest dimensions and design specifications.

01/23 AK

# Mouser Electronics

Authorized Distributor

Click to View Pricing, Inventory, Delivery & Lifecycle Information:

[TE Connectivity:](#)

[H1111000301-000](#)