



CIRCULAR PLASTIC CONNECTORS (CPC) PROTECTIVE CAPS

TE Connectivity (TE) CPC disposable protective caps are designed to fit the existing CPC plugs and receptacles, providing protection from environmental contaminants during storage and handling. The low-cost protective caps seamlessly fit the CPC plugs and receptacle when not mated for added protection from dust, dirt, storage, shipping and handling damage. Protective caps act as insurance on your expensive connectors and cable assemblies. Caps are available in orange, black, red and yellow.

FEATURES

- Design to fit existing CPC portfolio
- Disposable
- Temperature resistant up to 80° C
- Recyclable

APPLICATIONS

- Robotics
- Industrial machinery
- Instrumentation
- Material handling
- Power supplies
- Welding equipment

Circular Plastic Connectors (CPC) Protective Caps

MECHANICAL

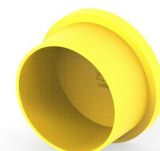
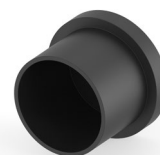
- Designed to fit shell sizes 11, 13, 17, and 23 for Series 1-6

MATERIALS

- LDPE (Low Density Polyethylene)

PART NUMBERS

| Cap Type | Shell Size | Color | Part Number | Description |
|---------------------|------------|--------|-------------|--|
| PLUG | 11 | ORANGE | 2407269-1 | CAP, CPC, SIZE 11, PLUG, ORANGE |
| | | BLACK | 2407269-2 | CAP, CPC, SIZE 11, PLUG, BLACK |
| | | RED | 2407269-3 | CAP, CPC, SIZE 11, PLUG, RED |
| | | YELLOW | 2407269-4 | CAP, CPC, SIZE 11, PLUG, YELLOW |
| RECEPTACLE/ PLUG | 11/13 | ORANGE | 1-2407269-1 | CAP, CPC, SIZE 11 RECP & 13 PLUG, ORANGE |
| | | BLACK | 1-2407269-2 | CAP, CPC, SIZE 11 RECP & 13 PLUG, BLACK |
| | | RED | 1-2407269-3 | CAP, CPC, SIZE 11 RECP & 13 PLUG, YELLOW |
| | | YELLOW | 1-2407269-4 | CAP, CPC, SIZE 11 RECP & 13 PLUG, RED |
| RECEPTACLE | 13 | ORANGE | 2-2407269-1 | CAP, CPC, SIZE 13 RECP, ORANGE |
| | | BLACK | 2-2407269-2 | CAP, CPC, SIZE 13 RECP, BLACK |
| | | RED | 2-2407269-3 | CAP, CPC, SIZE 13 RECP, YELLOW |
| | | YELLOW | 2-2407269-4 | CAP, CPC, SIZE 13 RECP, RED |
| PLUG | 17 | ORANGE | 3-2407269-1 | CAP, CPC, SIZE 17 PLUG, ORANGE |
| | | BLACK | 3-2407269-2 | CAP, CPC, SIZE 17 PLUG, BLACK |
| | | RED | 3-2407269-3 | CAP, CPC, SIZE 17 PLUG, RED |
| | | YELLOW | 3-2407269-4 | CAP, CPC, SIZE 17 PLUG, YELLOW |
| RECEPTACLE | 17 | ORANGE | 4-2407269-1 | CAP, CPC, SIZE 17 RECP, ORANGE |
| | | BLACK | 4-2407269-2 | CAP, CPC, SIZE 17 RECP, BLACK |
| | | RED | 4-2407269-3 | CAP, CPC, SIZE 17 RECP, RED |
| | | YELLOW | 4-2407269-4 | CAP, CPC, SIZE 17 RECP, YELLOW |
| PLUG | 23 | ORANGE | 5-2407269-1 | CAP, CPC, SIZE 23 PLUG, ORANGE |
| | | BLACK | 5-2407269-2 | CAP, CPC, SIZE 23 PLUG, BLACK |
| | | RED | 5-2407269-3 | CAP, CPC, SIZE 23 PLUG, RED |
| | | YELLOW | 5-2407269-4 | CAP, CPC, SIZE 23 PLUG, YELLOW |
| RECEPTACLE | 23 | ORANGE | 6-2407269-1 | CAP, CPC, SIZE 23 RECP, ORANGE |
| | | BLACK | 6-2407269-2 | CAP, CPC, SIZE 23 RECP, BLACK |
| | | RED | 6-2407269-3 | CAP, CPC, SIZE 23 RECP, RED |
| | | YELLOW | 6-2407269-4 | CAP, CPC, SIZE 23 RECP, YELLOW |



te.com

© 2022 TE Connectivity. All Rights Reserved.

TE Connectivity, TE connectivity (logo) and Every Connection Counts are trademarks owned or licensed by TE Connectivity. All other logos, products and/or company names referred to herein might be trademarks of their respective owners.

While TE has made every reasonable effort to ensure the accuracy of the information in this brochure, TE does not guarantee that it is error-free, nor does TE make any other representation, warranty or guarantee that the information is accurate, correct, reliable or current. TE reserves the right to make any adjustments to the information contained herein at any time without notice. TE expressly disclaims all implied warranties regarding the information contained herein, including, but not limited to, any implied warranties of merchantability or fitness for a particular purpose. The dimensions in this catalog are for reference purposes only and are subject to change without notice. Specifications are subject to change without notice. Consult TE for the latest dimensions and design specifications.

4/22 AK

Mouser Electronics

Authorized Distributor

Click to View Pricing, Inventory, Delivery & Lifecycle Information:

[TE Connectivity:](#)

[4-2407269-4](#)