



ANT-DB1-WRT-ccc

External Panel-Mount WiFi/WLAN Antenna

The ANT-DB1-WRT is a low-profile, panel-mount dipole antenna designed for superior performance in the 2.4 GHz, 5 GHz and 6 GHz bands supporting both WiFi 6 and WiFi 6E.

The ANT-DB1-WRT antenna's compact size allows it to be mounted in applications requiring a low profile and external antenna performance, such as WiFi/WLAN applications indoors and outdoors.

The ANT-DB1-WRT antenna is designed with an integrated counterpoise that eliminates the need for additional ground plane in the product, making it ideal for applications with non-conductive or RF-transparent enclosures.

Connector options for the ANT-DB1-WRT antenna are: SMA plug (male pin), RP-SMA plug (female socket), MHF1/U.FL-type plug (female socket), MHF3-type plug (female socket) or MHF4-type plug (female socket).

FEATURES

- Performance at 2.4 GHz to 2.485 GHz
 - VSWR: ≤ 1.9
 - Peak Gain: 3.2 dBi
 - Efficiency: 48%
- Performance at 5.150 GHz to 5.850 GHz
 - VSWR: ≤ 3.7
 - Peak Gain: 6.8 dBi
 - Efficiency: 57%
- Low-profile
 - Height: 10.0 mm (0.40 in)
- Mounts permanently with pressure sensitive adhesive ring and provided nut

APPLICATIONS

- WiFi/WLAN coverage
 - WiFi 6E (802.11ax)
 - WiFi 6 (802.11ax)
 - WiFi 5 (802.11ac)
 - WiFi 4 (802.11n)
 - 802.11b/g
- 2.4 GHz ISM applications
 - Bluetooth®, ZigBee®
- U-NII bands 1-8
- Internet of Things (IoT) devices
- Smart Home networking
 - Sensing and remote monitoring
 - WiFi 6 (802.11ax)

ORDERING INFORMATION

| Part Number | Description |
|----------------------|---|
| ANT-DB1-WRT-UFL-100 | Antenna, 100 mm (3.94 in) of 1.32 mm coaxial cable, MHF1/U.FL-type plug (female socket) |
| ANT-DB1-WRT-UFL-150 | Antenna, 150 mm (5.91 in) of 1.32 mm coaxial cable, MHF1/U.FL-type plug (female socket) |
| ANT-DB1-WRT-UFL | Antenna, 216 mm (8.50 in) of 1.32 mm coaxial cable, MHF1/U.FL-type plug (female socket) |
| ANT-DB1-WRT-MHF3 | Antenna, 216 mm (8.50 in) of 0.81 mm coaxial cable, MHF3-type plug (female socket) |
| ANT-DB1-WRT-MHF4-100 | Antenna, 100 mm (3.94 in) of 1.13 mm coaxial cable, MHF4-type plug (female socket) |
| ANT-DB1-WRT-MHF4 | Antenna, 216 mm (8.50 in) of 1.13 mm coaxial cable, MHF4-type plug (female socket) |
| ANT-DB1-WRT-RPS | Antenna, 216 mm (8.50 in) of RG-174 coaxial cable, RP-SMA plug (female socket) |
| ANT-DB1-WRT-SMA-150 | Antenna, 150 mm (5.91 in) of RG-174 coaxial cable, SMA plug (male pin) |
| ANT-DB1-WRT-SMA | Antenna, 216 mm (8.50 in) of RG-174 coaxial cable, SMA plug (male pin) |

Available from Linx Technologies and select distributors and representatives.

ELECTRICAL SPECIFICATIONS

| ANT-DB1-WRT | ISM/WiFi | WiFi/U-NII 1-3 | WiFi 6E/U-NII 5-8 |
|--------------------|----------------------|----------------------|----------------------|
| Frequency Range | 2.4 GHz to 2.485 GHz | 5.15 GHz to 5.85 GHz | 5925 MHz to 7125 MHz |
| VSWR (max) | 1.9 | 3.7 | 4.0 |
| Peak Gain (dBi) | 3.2 | 6.8 | 7.0 |
| Average Gain (dBi) | -3.3 | -3.2 | -3.4 |
| Efficiency (%) | 48 | 57 | 50 |
| Polarization | Linear | Radiation | Omnidirectional |
| Impedance | 50 Ω | Max Power | 5 W |
| Wavelength | 1/2-wave | Electrical Type | Dipole |

Electrical specifications and plots measured in free space.

MECHANICAL SPECIFICATIONS

| Part Number | Connection | Coaxial Cable, minimum inside bend radius | Weight |
|-----------------------|--|---|--|
| ANT-DB1-WRT-UFL | MHF1/U.FL-type plug | 1.32 mm: 6.0 mm (0.24 in) | 100 mm = 5.1 g (0.18 oz) 150 mm = 5.4 g (0.19 oz) 216 mm = 5.7 g (0.20 oz) |
| ANT-DB1-WRT-MHF3 | MHF3-type plug | 0.81 mm: 4.0 mm (0.16 in) | 216 mm = 5.4 g (0.19 oz) |
| ANT-DB1-WRT-MHF4 | MHF4-type plug | 1.13 mm: 5.0 mm (0.20 in) | 100 mm = 4.2 g (0.15 oz) 216 mm = 5.0 g (0.18 oz) |
| ANT-DB1-WRT-RPS | RP-SMA plug | RG-174: 10.2 mm (0.40 in) | 216 mm = 10.1 g (0.36 oz) |
| ANT-DB1-WRT-SMA | SMA plug | RG-174: 10.2 mm (0.40 in) | 150 mm = 9.2 g (0.32 oz) 216 mm = 10.1 g (0.36 oz) |
| Operating Temp. Range | -40 °C to +90 °C | | |
| Dimensions | Height: 10.0 mm (0.40 in), Diameter: 19.0 mm (0.75 in) | | |

PRODUCT DIMENSIONS

Figure 1 provides dimensions for the ANT-DB1-WRT series antennas.

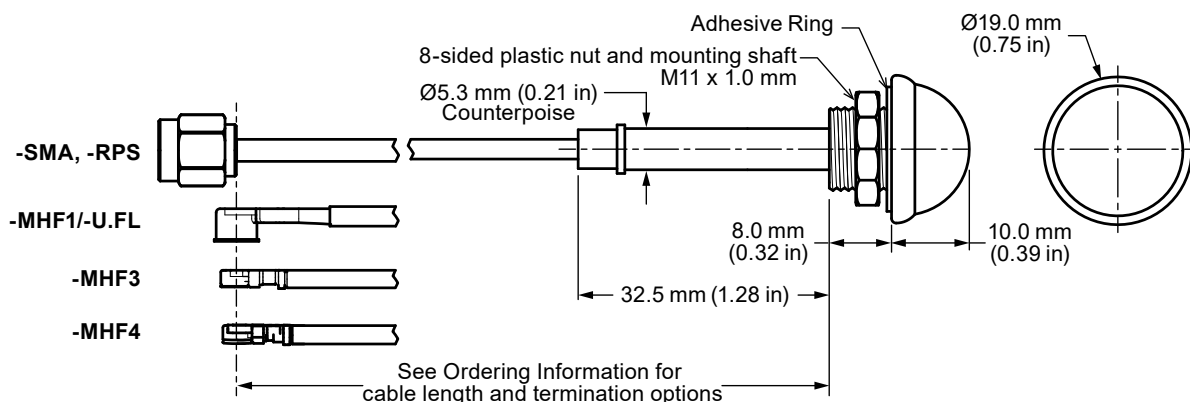


Figure 1: ANT-DB1-WRT Antenna Dimensions

PACKAGING INFORMATION

The ANT-DB1-WRT-ccc antenna is placed in a clear plastic sleeve and sealed in clear plastic bags in quantities of 50 pcs. Bags are packaged in cartons of 250 (5 bags). Distribution channels may offer alternative packaging options.

RECOMMENDED MOUNTING

The recommended enclosure mounting dimensions are shown in Figure 2. The ANT-DB1-WRT series antenna is supplied with an integrated closed-cell pressure sensitive adhesive ring which helps seal enclosures against external elements. The adhesive ring has a protective plastic backing that must be removed prior to installation. A pull tab has been provided for easy removal of the protective backing. The antenna can be permanently mounted using the provided nut which should be tightened to 4.0 kgf/cm (5 in/lbs) max. The recommended maximum enclosure wall thickness is 4.70 mm (0.188 in).

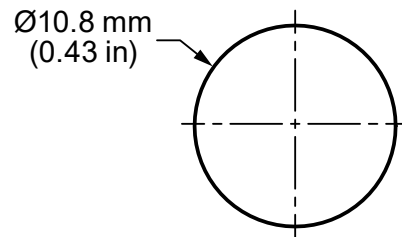


Figure 2: ANT-DB1-WRT Series Antenna Recommended Enclosure Mounting Dimensions

ANTENNA ORIENTATION

The ANT-DB1-WRT antenna is characterized in two antenna orientations as shown in Figure 3. The antenna in free space characterizes use of an antenna attached to an enclosure-mounted connector which is connected by cable to a printed circuit board. Although the antenna is a dipole not requiring a ground plane for function, characterization with an adjacent ground plane (102 mm x 102 mm) provides insight into antenna performance when attached directly to a printed circuit board mounted connector. The two orientations represent the most common end-product use cases.



Figure 3: ANT-DB1-WRT-ccc Test Orientations

FREE SPACE, NO GROUND PLANE

The charts on the following pages represent data taken with the antenna oriented in freespace without a ground plane, as shown in Figure 4.



Figure 4: ANT-DB1-WRT-ccc in Free Space, No Ground Plane

VSWR

Figure 5 provides the voltage standing wave ratio (VSWR) across the antenna bandwidth. VSWR describes the power reflected from the antenna back to the radio. A lower VSWR value indicates better antenna performance at a given frequency. Reflected power is also shown on the right-side vertical axis as a gauge of the percentage of transmitter power reflected back from the antenna.

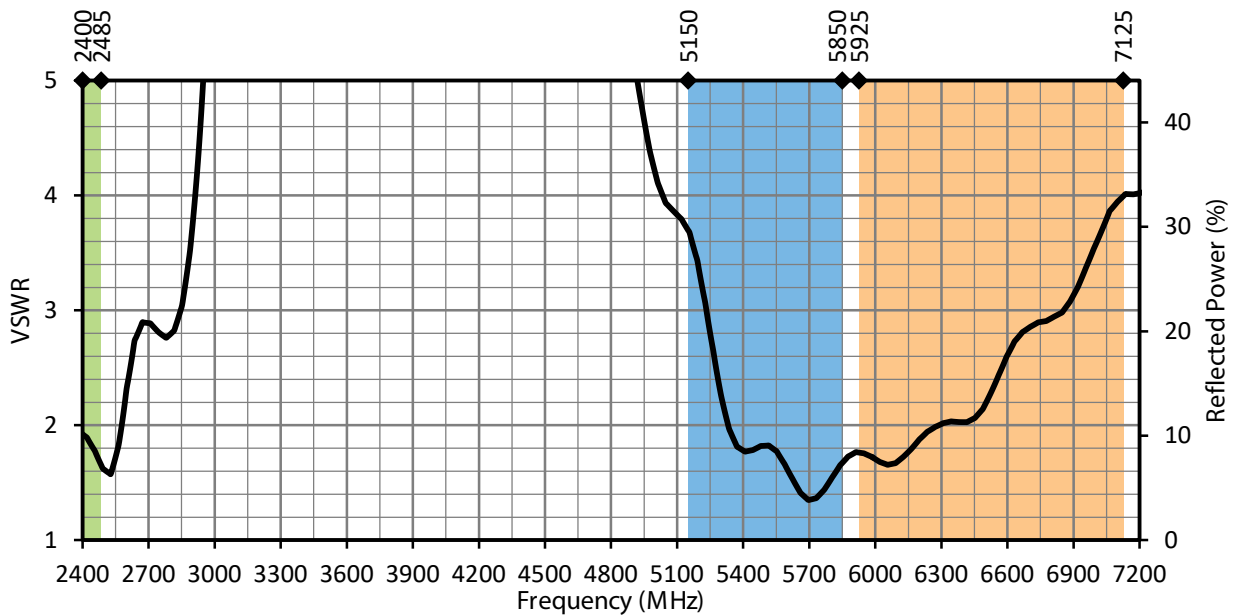


Figure 5: ANT-DB1-WRT-ccc VSWR, Free Space

RETURN LOSS

Return loss (Figure 6), represents the loss in power at the antenna due to reflected signals. Like VSWR, a lower return loss value indicates better antenna performance at a given frequency.

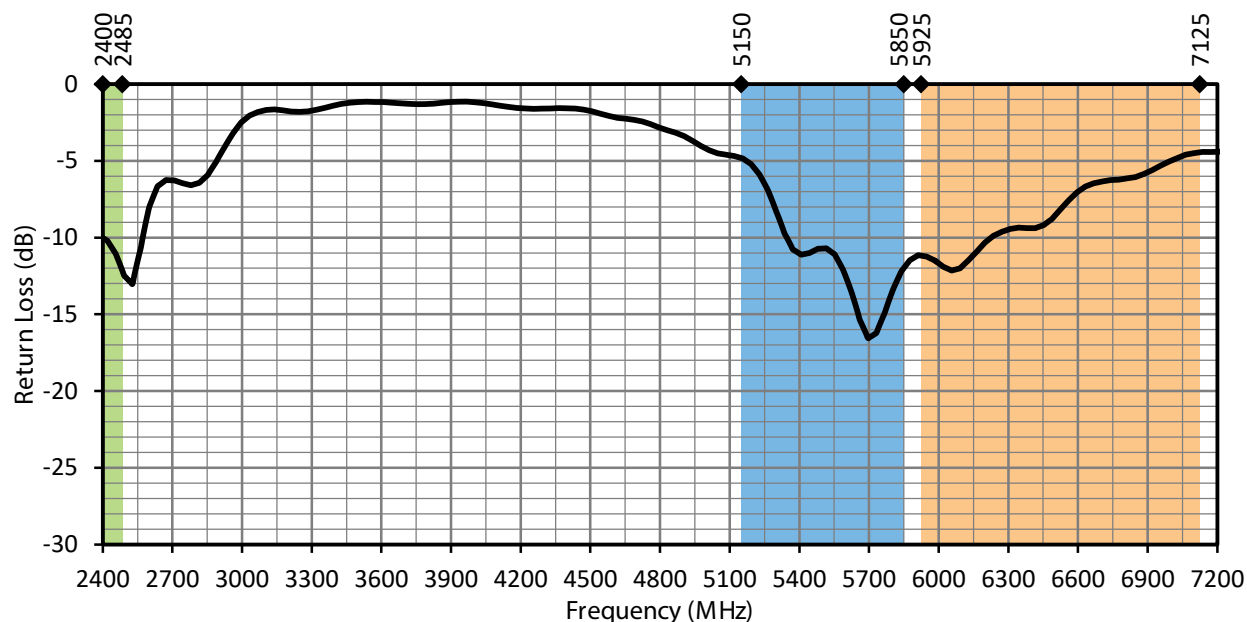


Figure 6: LPD Average Gain, Bent-90, with Frequency Band Highlights

PEAK GAIN

The peak gain across the antenna bandwidth is shown in Figure 7. Peak gain represents the maximum antenna input power concentration across 3-dimensional space, and therefore peak performance at a given frequency, but does not consider any directionality in the gain pattern.

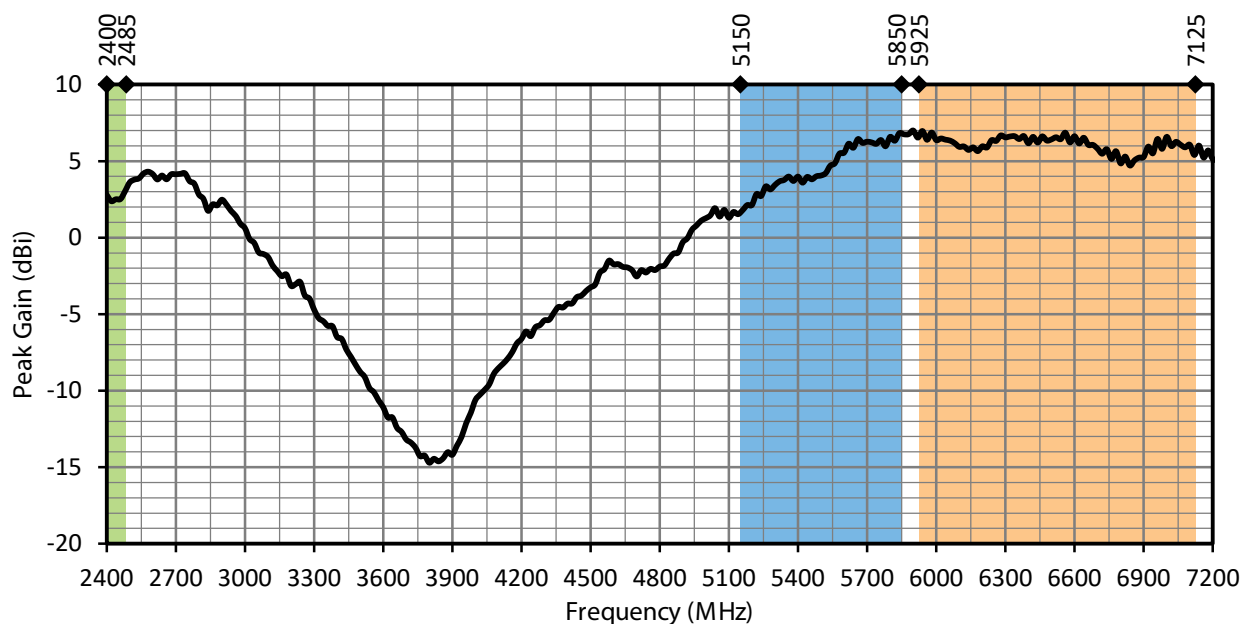


Figure 7: ANT-DB1-WRT-ccc Peak Gain, Free Space

AVERAGE GAIN

Average gain (Figure 8), is the average of all antenna gain in 3-dimensional space at each frequency, providing an indication of overall performance without expressing antenna directionality.

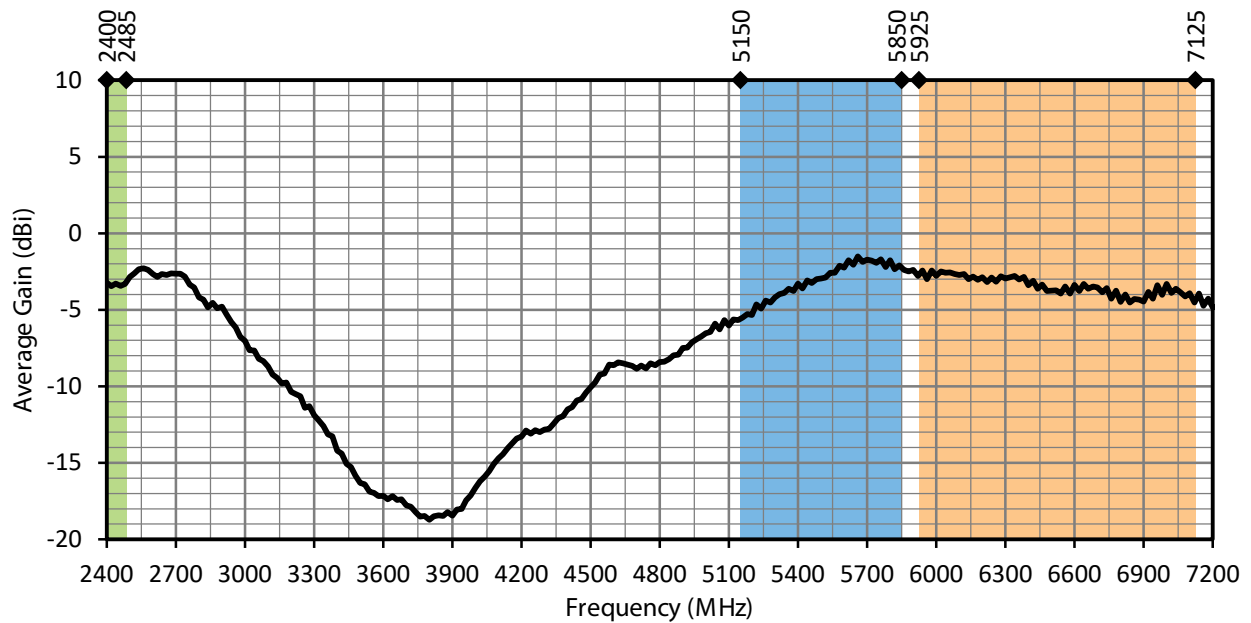


Figure 8: ANT-DB1-WRT-ccc Average Gain, Free Space

RADIATION EFFICIENCY

Radiation efficiency (Figure 9), shows the ratio of power delivered to the antenna relative to the power radiated at the antenna, expressed as a percentage, where a higher percentage indicates better performance at a given frequency.

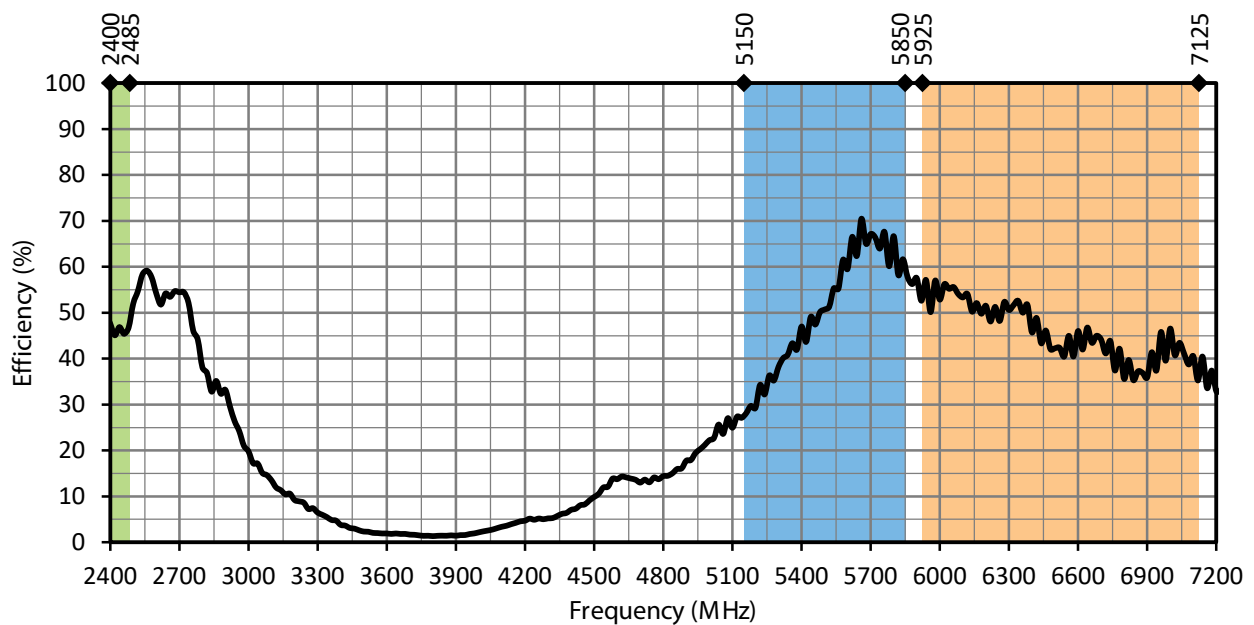


Figure 9: ANT-DB1-WRT-ccc Radiation Efficiency, Free Space

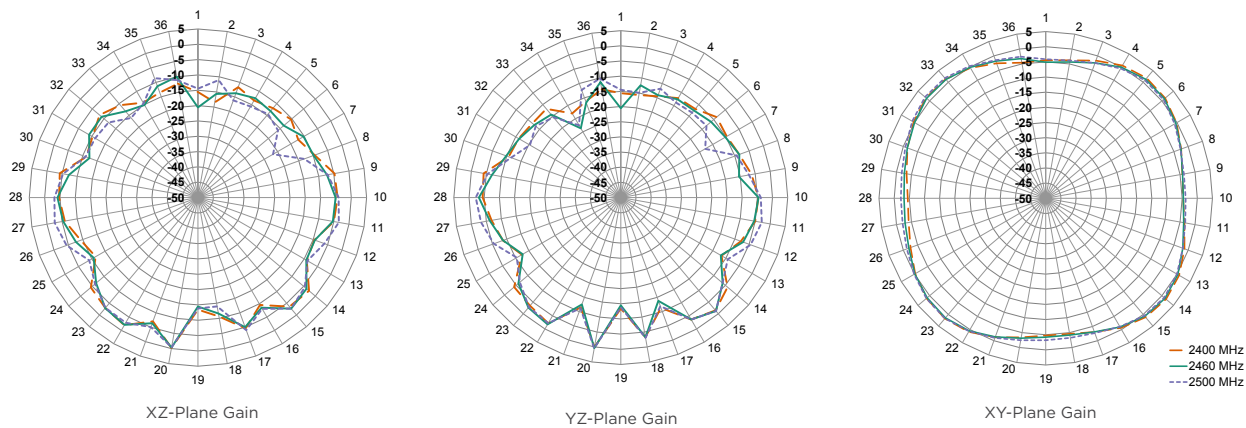
RADIATION PATTERNS

Radiation patterns provide information about the directionality and 3-dimensional gain performance of the antenna by plotting gain at specific frequencies in three orthogonal planes. Antenna radiation patterns are shown in Figure 10 using polar plots covering 360 degrees. The antenna graphic at the top of the page provides reference to the plane of the column of plots below it. Note: when viewed with typical PDF viewing software, zooming into radiation patterns is possible to reveal fine detail.

RADIATION PATTERNS - FREE SPACE



2400 MHZ TO 2485 MHZ (2450 MHZ)



5150 MHZ TO 5850 MHZ (5500 MHZ)

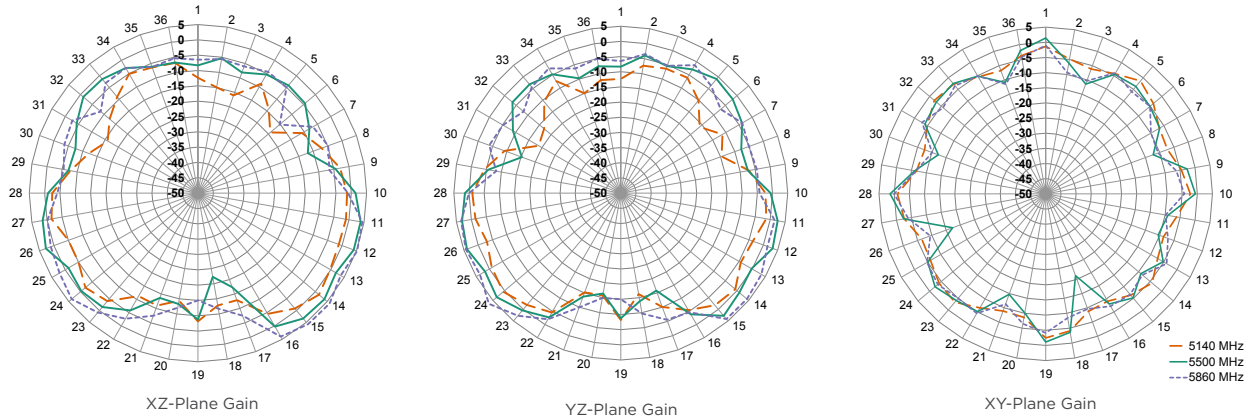
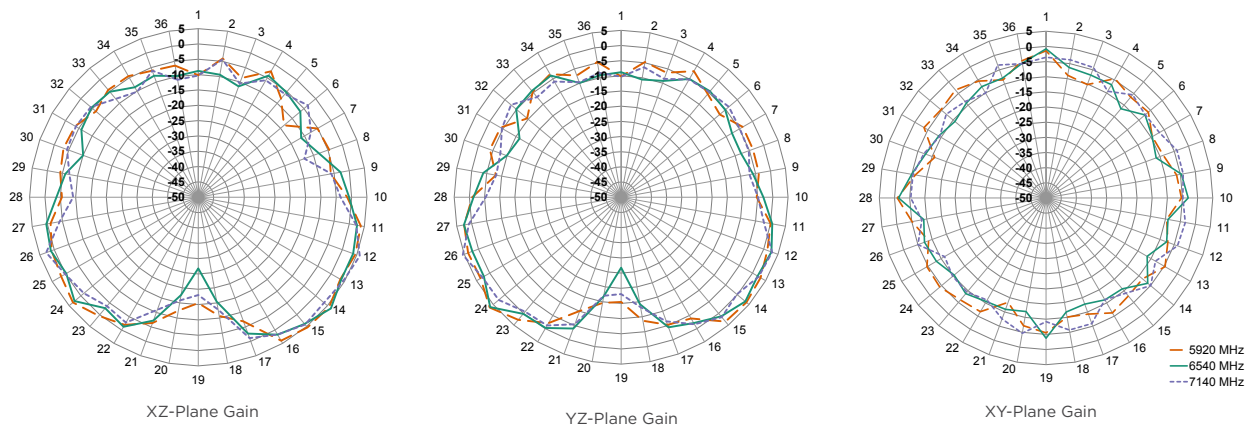


Figure 10: ANT-DB1-WRT-ccc Radiation Patterns, Free Space

RADIATION PATTERNS - FREE SPACE

5925 MHZ TO 7125 MHZ (6530 MHZ)



CENTER OF GROUND PLANE

The charts on the following pages represent data taken with the antenna oriented at the center of the ground plane, as shown in Figure 11.

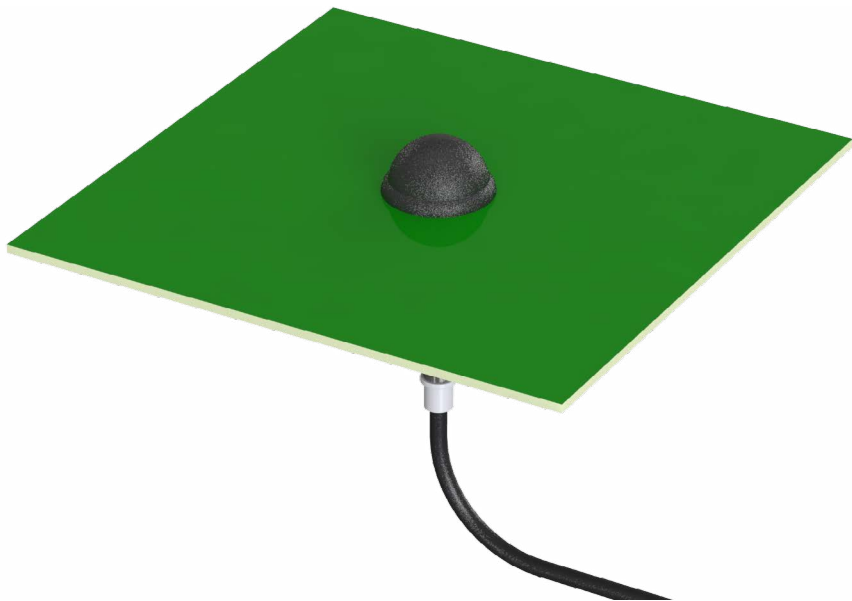


Figure 11: ANT-DB1-WRT-ccc at Center of Ground Plane

VSWR

Figure 12 provides the voltage standing wave ratio (VSWR) across the antenna bandwidth. VSWR describes the power reflected from the antenna back to the radio. A lower VSWR value indicates better antenna performance at a given frequency. Reflected power is also shown on the right-side vertical axis as a gauge of the percentage of transmitter power reflected back from the antenna.

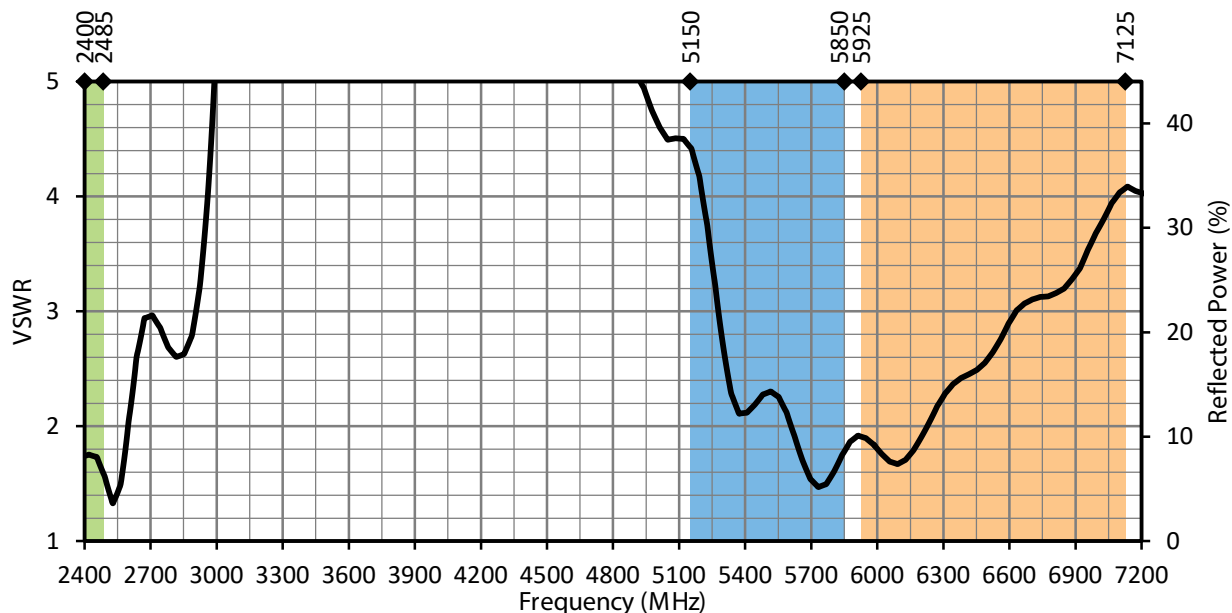


Figure 12: ANT-DB1-WRT-ccc VSWR, at Center of Ground Plane

RETURN LOSS

Return loss (Figure 13), represents the loss in power at the antenna due to reflected signals. Like VSWR, a lower return loss value indicates better antenna performance at a given frequency.

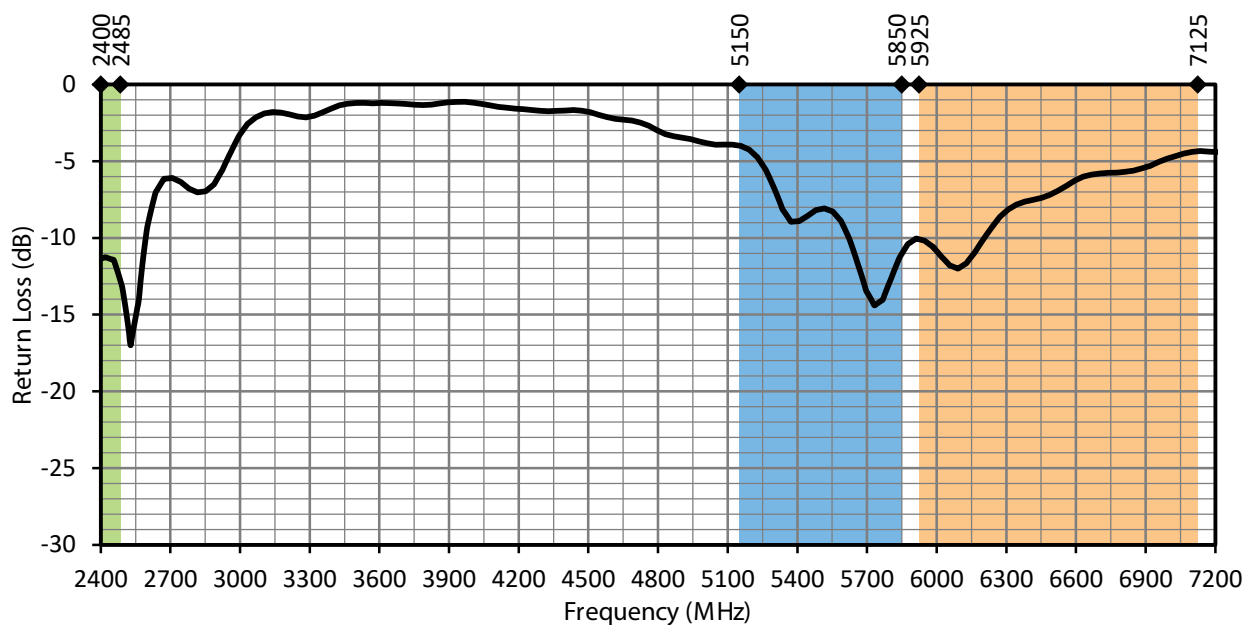


Figure 13: ANT-DB1-WRT-ccc Return Loss, at Center of Ground Plane

PEAK GAIN

The peak gain across the antenna bandwidth is shown in Figure 14. Peak gain represents the maximum antenna input power concentration across 3-dimensional space, and therefore peak performance at a given frequency, but does not consider any directionality in the gain pattern.

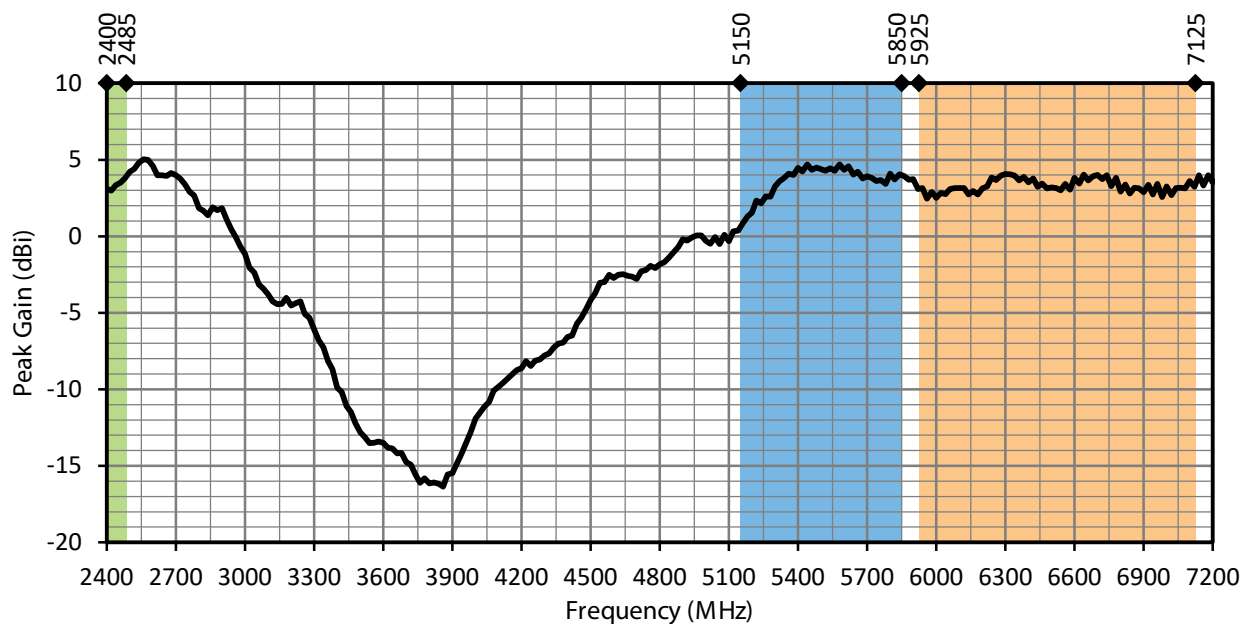


Figure 14: ANT-DB1-WRT-ccc Peak Gain, at Center of Ground Plane

AVERAGE GAIN

Average gain (Figure 15), is the average of all antenna gain in 3-dimensional space at each frequency, providing an indication of overall performance without expressing antenna directionality.

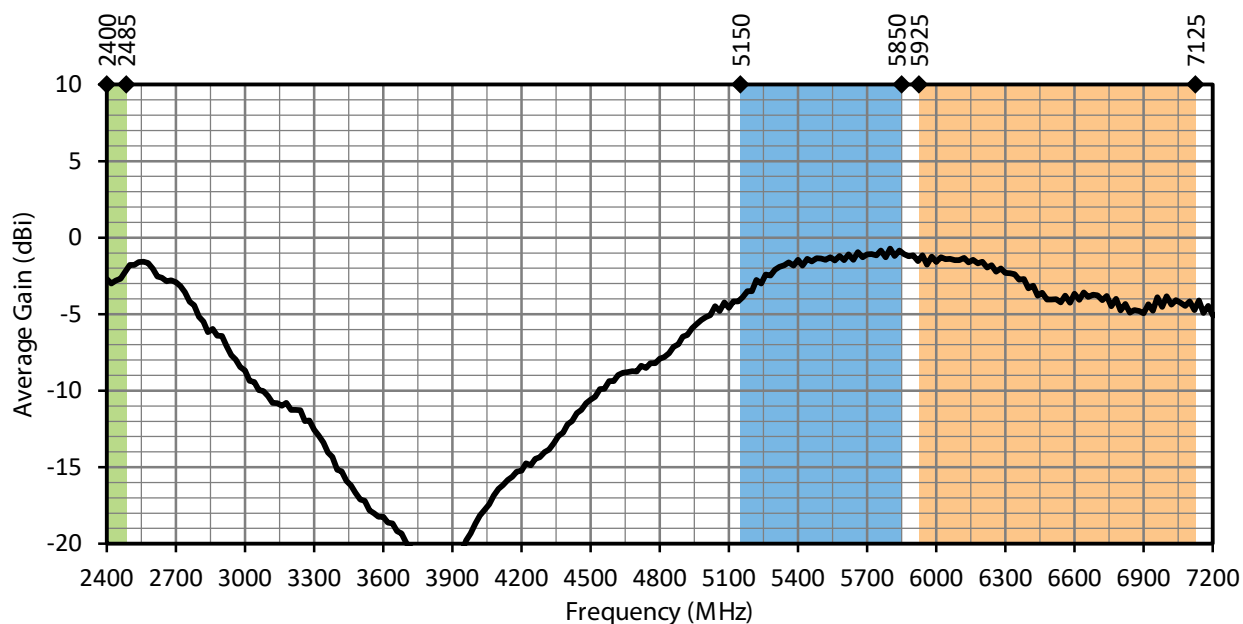


Figure 15: ANT-DB1-WRT-ccc Average Gain, at Center of Ground Plane

RADIATION EFFICIENCY

Radiation efficiency (Figure 16), shows the ratio of power delivered to the antenna relative to the power radiated at the antenna, expressed as a percentage, where a higher percentage indicates better performance at a given frequency.

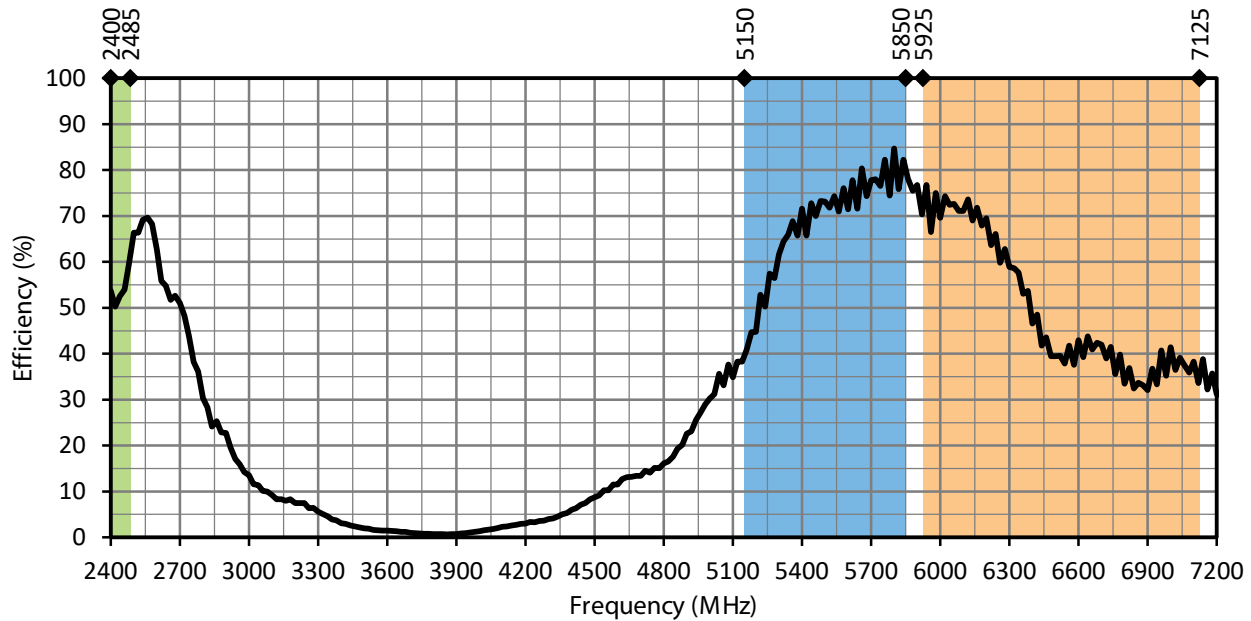
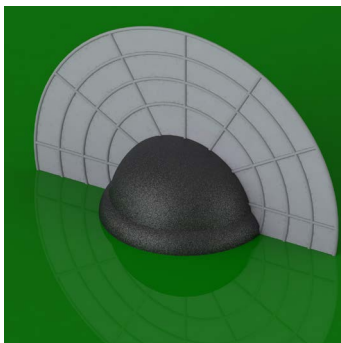


Figure 16: ANT-DB1-WRT-ccc Radiation Efficiency, at Center of Ground Plane

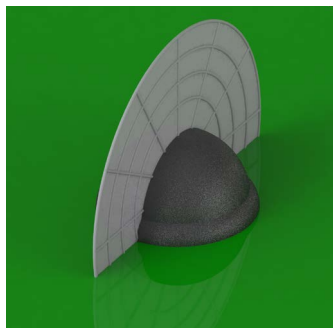
RADIATION PATTERNS

Radiation patterns provide information about the directionality and 3-dimensional gain performance of the antenna by plotting gain at specific frequencies in three orthogonal planes. Antenna radiation patterns are shown in Figure 17 using polar plots covering 360 degrees. The antenna graphic at the top of the page provides reference to the plane of the column of plots below it. Note: when viewed with typical PDF viewing software, zooming into radiation patterns is possible to reveal fine detail.

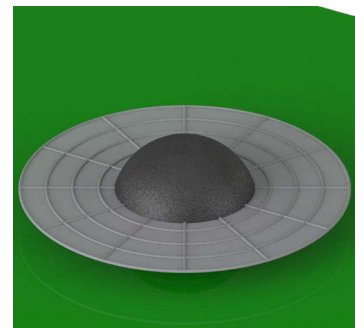
RADIATION PATTERNS - CENTER OF GROUND PLANE



XZ-Plane Gain

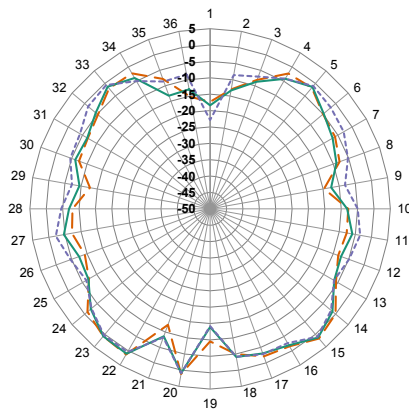


YZ-Plane Gain

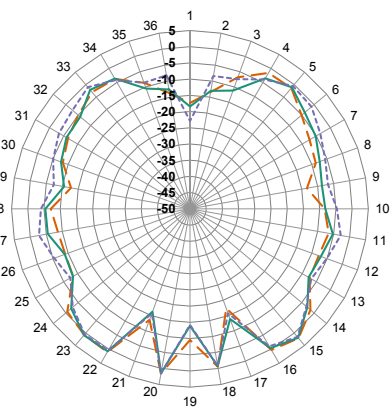


XY-Plane Gain

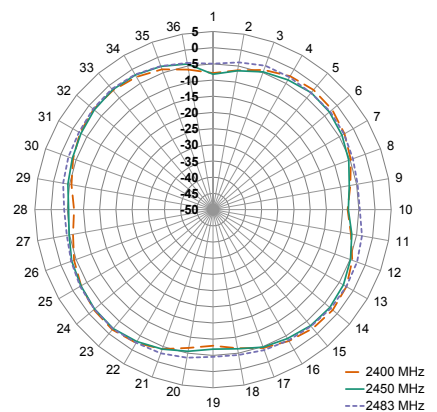
2400 MHZ TO 2485 MHZ (2450 MHZ)



XZ-Plane Gain

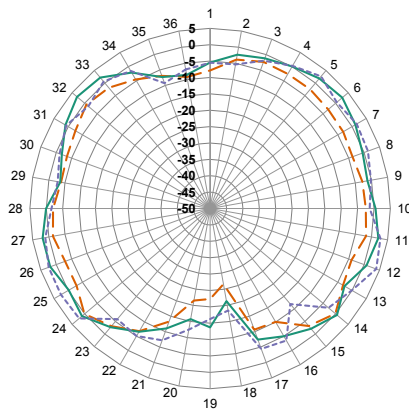


YZ-Plane Gain

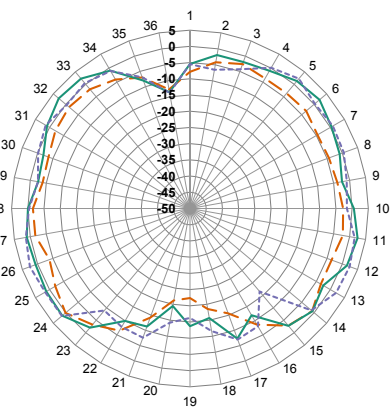


XY-Plane Gain

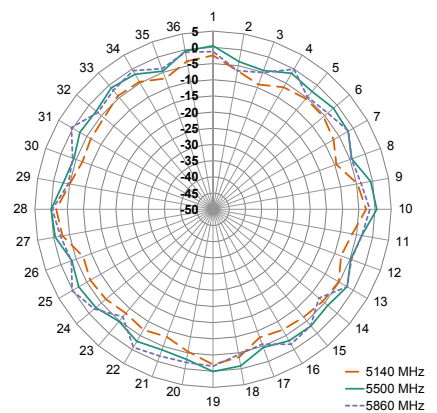
5150 MHZ TO 5850 MHZ (5500 MHZ)



XZ-Plane Gain



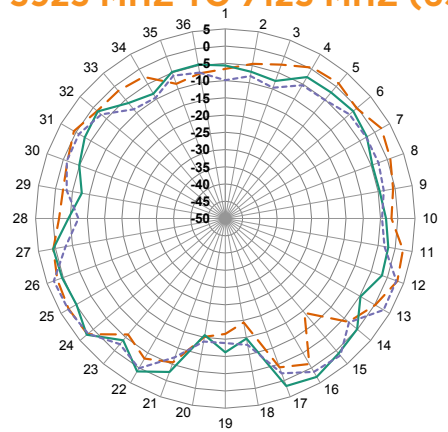
YZ-Plane Gain



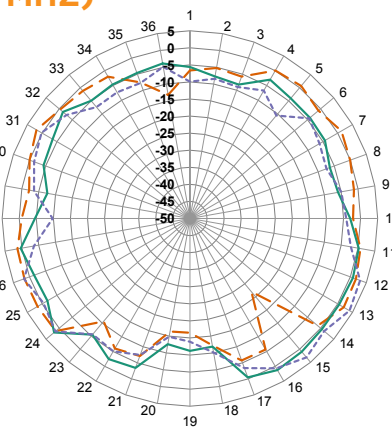
XY-Plane Gain

RADIATION PATTERNS - CENTER OF GROUND PLANE

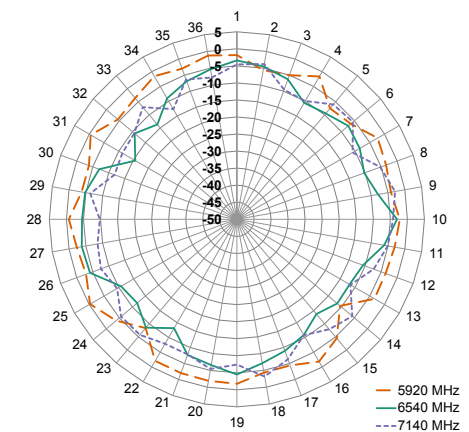
5925 MHZ TO 7125 MHZ (6530 MHZ)



XZ-Plane Gain



YZ-Plane Gain



XY-Plane Gain

Figure 17: ANT-DB1-WRT-ccc Radiation Patterns, at Center of Ground Plane

TE TECHNICAL SUPPORT CENTER

| | |
|-------------------|-----------------------|
| USA: | +1 (800) 522-6752 |
| Canada: | +1 (905) 475-6222 |
| Mexico: | +52 (0) 55-1106-0800 |
| Latin/S. America: | +54 (0) 11-4733-2200 |
| Germany: | +49 (0) 6251-133-1999 |
| UK: | +44 (0) 800-267666 |
| France: | +33 (0) 1-3420-8686 |
| Netherlands: | +31 (0) 73-6246-999 |
| China: | +86 (0) 400-820-6015 |

te.com

TE Connectivity, TE, TE connectivity (logo), Linx and Linx Technologies are trademarks owned or licensed by the TE Connectivity Ltd. family of companies. All other logos, products and/or company names referred to herein might be trademarks of their respective owners.

The information given herein, including drawings, illustrations and schematics which are intended for illustration purposes only, is believed to be reliable. However, TE Connectivity makes no warranties as to its accuracy or completeness and disclaims any liability in connection with its use. TE Connectivity's obligations shall only be as set forth in TE Connectivity's Standard Terms and Conditions of Sale for this product and in no case will TE Connectivity be liable for any incidental, indirect or consequential damages arising out of the sale, resale, use or misuse of the product. Users of TE Connectivity products should make their own evaluation to determine the suitability of each such product for the specific application.

TE Connectivity warrants to the original end user customer of its products that its products are free from defects in material and workmanship. Subject to conditions and limitations TE Connectivity will, at its option, either repair or replace any part of its products that prove defective because of improper workmanship or materials. This limited warranty is in force for the useful lifetime of the original end product into which the TE Connectivity product is installed. Useful lifetime of the original end product may vary but is not warranted to exceed one (1) year from the original date of the end product purchase.

©2022 TE Connectivity. All Rights Reserved.

11/22 Original

Mouser Electronics

Authorized Distributor

Click to View Pricing, Inventory, Delivery & Lifecycle Information:

[TE Connectivity:](#)

[ANT-DB1-WRT-RPS](#)