

## Power PCB Relay RPII/1

- 1 pole 8/12/16A, 1 form C (CO) or 1 form A (NO) contact
- 4kV/8mm coil-contact
- Pinning 3.5 or 5mm (8/12A) and 5mm (16A)
- RoHS compliant (Directive 2011/65/EC)

Typical applications

Power supplies, domestic appliances, heating control, installation



### Approvals

VDE Cert. No. 40025448

UL E214025 (only for AgNi versions)

Technical data of approved types on request

Contact Data	8A	12A	16A
Contact arrangement	1 form C (CO) or 1 form A (NO)		
Rated voltage	250VAC		
Max. switching voltage	400VAC		
Rated current	8A	12A	16A
Limiting making current, max. 4s, df 10%	16A	20A	25A
Breaking capacity max.	2000VA	3000VA	4000VA
Contact material	AgNi0.15	AgNi 90/10	AgNi 90/10 AgSnO <sub>2</sub>
Frequency of operation, with/without load	600/36000h <sup>-1</sup>		
Operate/release time typ.	8/2ms		
Bounce time typ., form A/form B	2/4ms		

### Contact ratings

Type	Contact	Load	Cycles
<b>IEC61810</b>			
RP314/RP714	A (NO)	16A, 250 VAC, resistive, 35°C	100x10 <sup>3</sup>
RP314 DC-coil	A (NO)	6A, 250 VAC, cosφ = 0,4, 35°C	250x10 <sup>3</sup>
RP31L DC-coil	C (CO)	16A, 250 VAC, resistive, 35°C	10x10 <sup>3</sup>
RP414 DC-coil	A (NO)	12A, 250 VAC, resistive, 70°C	100x10 <sup>3</sup>
RP414 REM	A (NO)	12A, 250 VAC, resistive, 35°C	100x10 <sup>3</sup>
RP41N/RP814	C (CO)	12A, 250 VAC, resistive, 35°C	10x10 <sup>3</sup>
RP411/RP412	A (NO)	8A, 250 VAC, resistive, 35°C	100x10 <sup>3</sup>
RP411/RP412	C (CO)	8A, 250 VAC, resistive, 35°C	10x10 <sup>3</sup>

### UL61810-1 (formerly UL508)

RP411/RP412	C(CO)	8A, 250VAC, general purpose, 40°C	6x10 <sup>3</sup>
RP314/RP714	C(CO)	16A, 250VAC, general purpose, 40°C	6x10 <sup>3</sup>
RP314/RP714	C(CO)	250VAC, 1.5HP, 40°C	6x10 <sup>3</sup>
RP*14/RP*1N	C(CO)	12A, 250VAC, general purpose, 70°C	6x10 <sup>3</sup>
RP**4/RP**N	A(NO)	10A, 250VAC, resistive, 70°C	100x10 <sup>3</sup>

Mechanical endurance

DC-coil version: >20x10<sup>6</sup> operations

REM/bistable version: >1x10<sup>6</sup> operations

### Coil Data

Coil voltage range	5 to 110VDC
Operative range, IEC 61810	2

### Coil versions, DC coil

Coil code	Rated voltage VDC	Operate voltage VDC	Release voltage VDC	Coil resistance Ω±10%	Rated coil power mW
005	5	3.5	0.5	54	500
006	6	4.2	0.6	68	500
012	12	8.4	1.2	270	500
024	24	16.8	2.4	1100 <sup>1)</sup>	500
048	48	33.6	4.8	4400 <sup>1)</sup>	500
060	60	42.0	6.0	6540 <sup>1)</sup>	500
110	110	77.0	11.0	23100 <sup>1)</sup>	500

1) Coil resistance ±15%.

All figures are given for coil without pre-energization, at ambient temperature +20°C.

Other coil voltages on request.

### Coil versions, REM I (1 coil bistable/remanence)

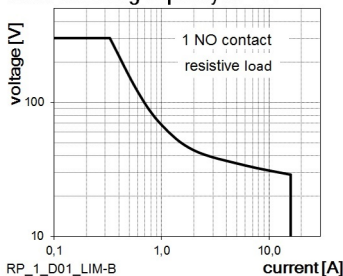
Coil code	Rated voltage VDC	Resistance Ω±15%	Magnetisation range MIN./ Vdc MAX./Vdc	Demagnetisation range MIN./ Vdc MAX./Vdc
A12	12	115	9 18	3 4.8
A24	24	460	18 36	6 9.6
A48	48	1748	36 72	12 19.2

### Coil versions, REM II (2 coil bistable/remanence)

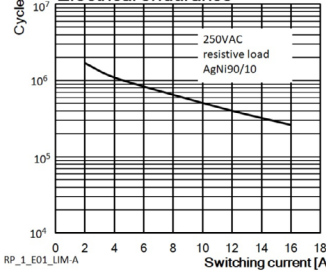
Coil code	Rated voltage VDC	Resistance Ω±15%	Magnetisation range MIN./ Vdc MAX./Vdc	Demagnetisation range MIN./ Vdc MAX./Vdc
F05	5	20	3.7 7.5	3.7 6
F12	12	105	9 18	9 14.4
F24	24	460	18 36	18 28.8

All figures are given for coil without pre-energization, at ambient temperature +20°C. Other coil voltages on request.

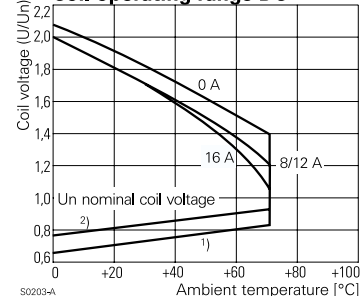
### Max. breaking capacity RPII/1



### Electrical endurance



### Coil operating range DC



**Power PCB Relay RP11/1 (Continued)**

**Insulation Data**

Initial dielectric strength	
between open contacts	1000V <sub>rms</sub>
between contact and coil	4000V <sub>rms</sub>
Clearance/creepage	
between contact and coil	≥8/8mm
Material group of insulation parts	IIIa

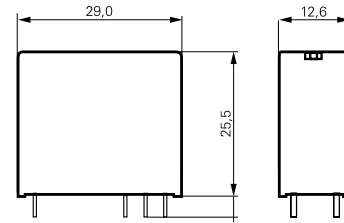
**Other Data**

Material compliance: EU RoHS/ELV, China RoHS, REACH, Halogen content refer to the Product Compliance Support Center at [www.te.com/customer-support/rohssupportcenter](http://www.te.com/customer-support/rohssupportcenter)

Ambient temperature	-40 to +70°C
Category of environmental protection	
IEC 61810	RTII - flux proof, RTIII - wash tight
Vibration resistance (functional), form A/form B, 30 to 300Hz	10/2g
Shock resistance (destructive)	100g
Terminal type	PCB-THT
Weight	18g
Resistance to soldering heat THT, IEC 60068-2-20	
flux proof version	270°C/10s
wash tight version	260°C/5s
Packaging/unit	tube/20 pcs., box/500 pcs.

**Dimensions**

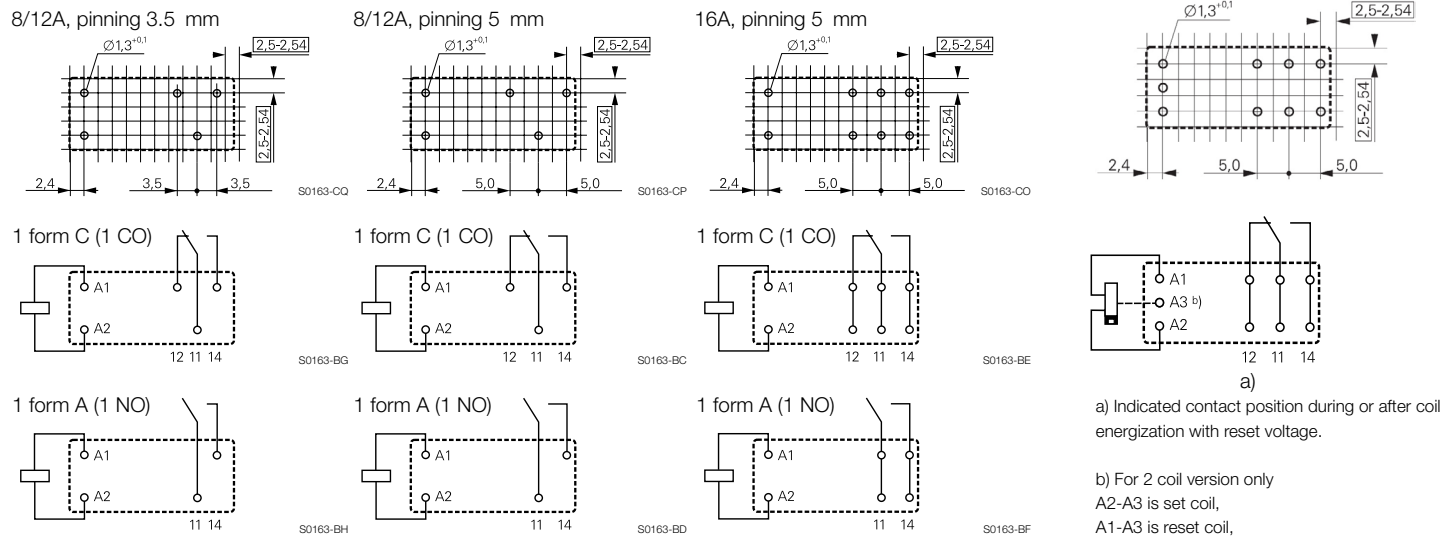
Dimensions in mm



Monostable and REM I (REM II version has 3 coil terminals)

**PCB layout / terminal assignment**

Bottom view on solder pins  
Dimensions in mm



a) Indicated contact position during or after coil energization with reset voltage.

b) For 2 coil version only  
A2-A3 is set coil,  
A1-A3 is reset coil,  
A1&A2 always same polarity,  
A3 opposite polarity.  
Direction of current not important as long as polarity is correct

**Product code structure**

Typical product code **RP 3 1 4 024**

Type			
RP Power PCB Relay RP11/1			
Version			
3	16A, flux proof	7	16A, wash tight
4	8/12A, flux proof	8	8/12A, wash tight
Contact arrangement			
1	1 form C contact (1 CO)	3	1 form A contact (1 NO)
5	1 form B contact (1 NC)		
Contact material and pinning			
1	AgNi0.15, 8A, pinning 5mm	0	Discontinued: AgCdO, pinning 5mm <sup>2)</sup>
2	AgNi0.15, 8A, pinning 3.5mm	8	Discontinued: AgCdO, 8/12A, pinning 3.5mm <sup>2)</sup>
L	AgSnO <sub>2</sub> , pinning 5mm	4	AgNi 90/10, pinning 5mm
		N	AgNi 90/10, 12A, pinning 3.5mm
Coil			
Coil code: please refer to coil versions table			

2) AgCdO contacts are discontinued and replaced with AgNi contacts (see PCN E-18-003947)

**Power PCB Relay RPII/1** (Continued)

Product Code	Version	Contacts	Cont. Material	Pinning	Coil Version	Coil	Part Number
RP314005	16A, flux proof	1 form C (CO) contact	AgNi 90/10	5 mm	monostable	5VDC	8-1415546-4
RP314006						6VDC	8-1415546-5
RP314010						10VDC	8-1415546-6
RP314012						12VDC	8-1415546-7
RP314024						24VDC	8-1415546-8
RP314048						48VDC	8-1415546-9
RP314110						110VDC	9-1415546-0
RP314F12					REM II	12VDC	8-1415546-1
RP314F24						24VDC	8-1415546-2
RP31L012			AgSnO <sub>2</sub>		monostable	12VDC	7-1415071-1
RP31L024						24VDC	8-1415071-1
RP31L048						48VDC	2-1415044-1
RP334012		1 form A (NO) contact	AgNi 90/10			12VDC	9-1415546-1
RP334024						24VDC	9-1415546-2
RP334048						48VDC	9-1415546-4
RP354012		1 form B (NC) contact				12VDC	9-1415546-5
RP411012	8A, flux proof	1 form C (CO) contact	AgNi0.15			12VDC	9-1393230-4
RP411024						24VDC	9-1393230-5
RP411048						48VDC	9-1393230-6
RP411060						60VDC	9-1393230-7
RP411110						110VDC	9-1393230-8
RP431012		1 form A (NO) contact				12VDC	4-1393231-5
RP412012		1 form C (CO) contact		3,5 mm		12VDC	1-1393231-1
RP412024						24VDC	1-1393231-2
RP412F12					REM II	24VDC	1393231-6
RP414012	12A, flux proof	1 form C (CO) contact	AgNi 90/10	5 mm	monostable	12VDC	1415547-4
RP414024						24VDC	1415547-5
RP414A24					REM I	24VDC	9-1415546-6
RP414F24					REM II	24VDC	9-1415546-7
RP41N024				3,5 mm	monostable	24VDC	1-1415547-7
RP434024		1 form A (NO) contact		5 mm		24VDC	9-1415546-3
RP43N024				3,5 mm		24VDC	7-1415547-0
RP45N024		1 form B (NC) contact				24VDC	7-1415547-1
RP714006	16A, wash tight	1 form C (CO) contact		5 mm		6VDC	9-1415546-8
RP714012						12VDC	9-1415546-9
RP714024						24VDC	1415547-1
RP714048						48VDC	1415547-2
RP734012		1 form A (NO) contact				12VDC	1415547-6
RP734020						20VDC	1415547-7
RP734024						24VDC	1415547-8
RP734036						36VDC	1415547-9
RP734A12					REM I	12VDC	1415547-3
RP814012	12A, wash tight	1 form C (CO) contact			monostable	12VDC	1-1415547-0
RP814024						24VDC	1-1415547-1
RP814048						48VDC	1-1415547-2

Note. This list represents the most common types and does not show all variants covered by this datasheet. Other types on request.

# Mouser Electronics

Authorized Distributor

Click to View Pricing, Inventory, Delivery & Lifecycle Information:

[TE Connectivity:](#)

[RP314012](#) [RP314024](#)