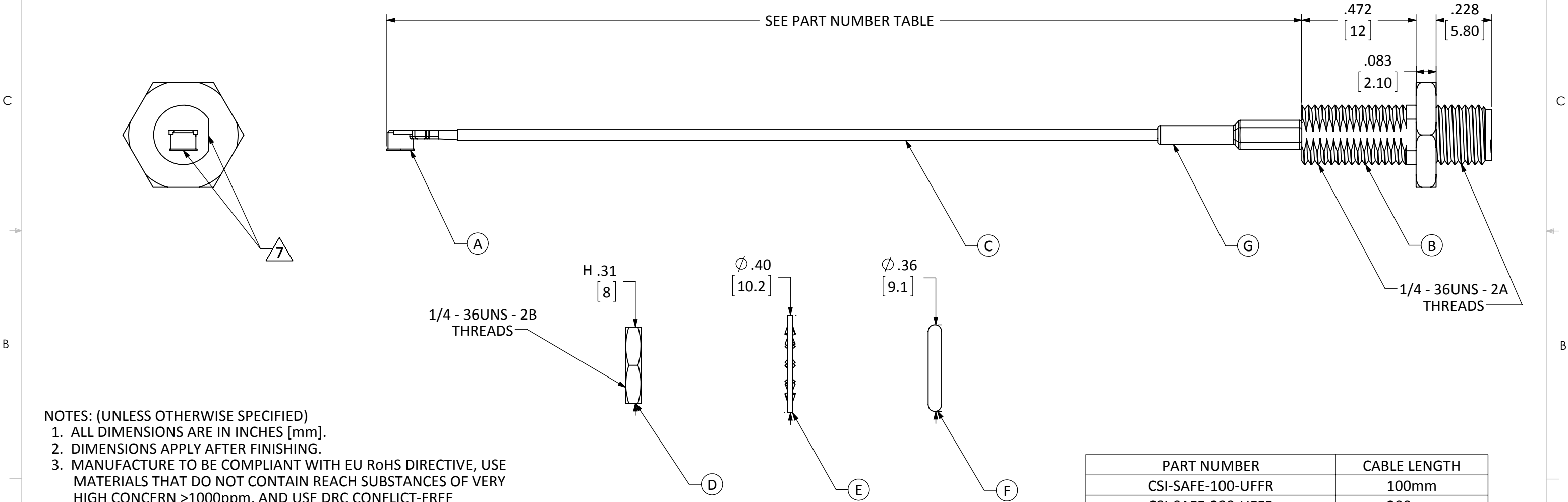


| ITEM | DESCRIPTION | MATERIAL | FINISH |
|------|--|----------------|--------|
| A | U.FL PLUG | BRASS | GOLD |
| B | SEALED SMA FEM. BULKHEAD MOUNT CONNECTOR | BRASS | NICKEL |
| C | CABLE | 1.13mm COAXIAL | GRAY |
| D | NUT | BRASS | NICKEL |
| E | WASHER | BRASS | NICKEL |
| F | O-RING | Si RUBBER | BLACK |
| G | HEAT SHRINK TUBING | POLYOLEFIN | BLACK |

| REVISIONS | | | |
|-----------|--|-----------|------|
| REV | DESCRIPTION | DATE | APPV |
| A | INITIAL RELEASE OF LINX INTERNAL DRAWING | 15-APR-14 | SAH |
| B | UPDATED NOTE 3; ADDED FLAG NOTE 7 AND VIEW TO ILLUSTRATE CONNECTOR ORIENTATION | 1-SEP-15 | SAH |
| C | UPDATED TO ADD DIMENSIONS TO NUT, WASHER AND O-RING | 13-JUL-16 | SAH |



- NOTES: (UNLESS OTHERWISE SPECIFIED)
- ALL DIMENSIONS ARE IN INCHES [mm].
 - DIMENSIONS APPLY AFTER FINISHING.
 - MANUFACTURE TO BE COMPLIANT WITH EU RoHS DIRECTIVE, USE MATERIALS THAT DO NOT CONTAIN REACH SUBSTANCES OF VERY HIGH CONCERN >1000ppm, AND USE DRC CONFLICT-FREE SOURCED MATERIALS.
 - MINIMUM FREQUENCY RANGE: DC TO 3GHz.
 - CABLE ASSEMBLY SPECIFICATIONS;
 - CHARACTERISTIC IMPEDANCE: 50Ω ± 3Ω
 - INSERTION LOSS: 100mm - 0.34vf IN GHz TYP.
200mm - 0.56vf IN GHz TYP.
300mm - 0.73vf IN GHz TYP.
 - CONNECTOR TO BE APPLIED IN ACCORDANCE WITH CONNECTOR SUPPLIER RECOMMENDED PROCEDURE.
- 7 CONNECTORS TO BE ORIENTED WITH U.FL CONNECTOR MATING FACE 90° CLOCKWISE FROM BULKHEAD CONNECTOR THREAD FLAT FACE, AS SHOWN.

| PART NUMBER | CABLE LENGTH |
|-------------------|--------------|
| CSI-SAFE-100-UFFR | 100mm |
| CSI-SAFE-200-UFFR | 200mm |
| CSI-SAFE-300-UFFR | 300mm |

WARNING: THIS DRAWING CONTAINS PROPRIETARY INFORMATION THAT IS THE SOLE PROPERTY OF LINX TECHNOLOGIES, AND SHALL BE TREATED AS SUCH. NO DISCLOSURE OR REPRODUCTION OF THIS DOCUMENT IS PERMITTED, IN WHOLE OR IN PART, WITHOUT THE EXPRESS WRITTEN PERMISSION OF LINX TECHNOLOGIES OR ITS DESIGNATED AGENTS.

| | | |
|-----------|--|----------------------------|
| MATERIAL: | INTERPRET DIMENSIONS AND TOLERANCES PER ASME Y14.5. | PROJECTION: |
| FINISH: | SURFACE FINISH: $\sqrt{32}$ ANGLES: $\pm 1^\circ$ TOLERANCES: .X $\pm .1$.XX $\pm .01$.XXX $\pm .005$ | |
| | DRAWN: B.MURPHY DT: 26-MAR-14 | SIZE B |
| | ENGR: S.HOGAN DT: 15-APR-14 | DWG. NO. CSI-SAFE-ccc-UFFR |

| | |
|-------|--------------|
| REV C | SHEET 1 OF 1 |
|-------|--------------|

TE
connectivity

TITLE:
CABLE ASSEMBLY, U.FL TO FEM. BLKHD SMA, 1.13mm CBL

SCALE: 2.5:1 DO NOT SCALE DRAWING

Mouser Electronics

Authorized Distributor

Click to View Pricing, Inventory, Delivery & Lifecycle Information:

[TE Connectivity:](#)

[CSI-SAFE-200-UFFR](#)