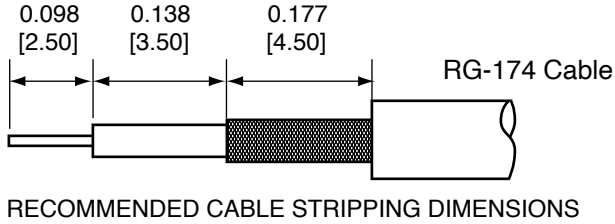
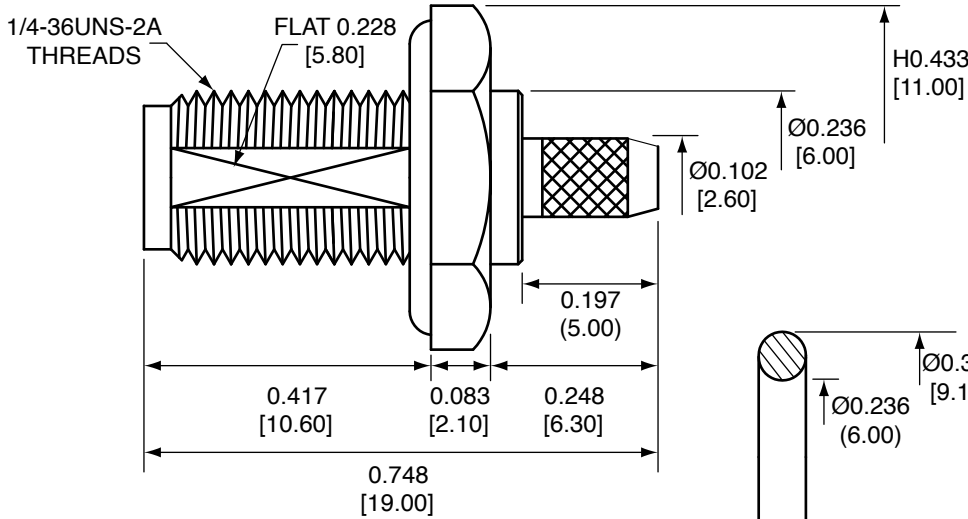


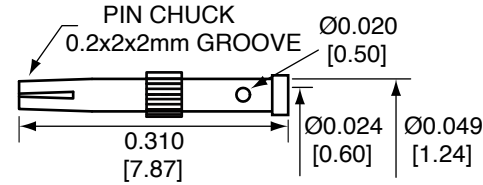
| Description | Material | Finish |
|-------------|------------|--------|
| Body | Brass | Nickel |
| Socket | Brass | Gold |
| Insulation | PTFE | N/A |
| O-Ring | Si Rubber | Rubber |
| Crimp ring | Brass | Nickel |
| Washer | Brass | Nickel |
| Nut | Brass | Nickel |
| Heat Shrink | Polyolefin | Black |



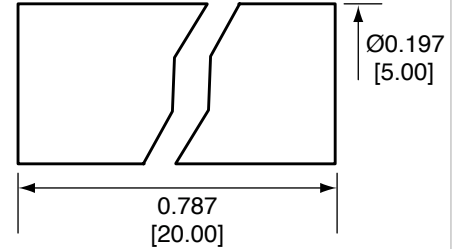
| REVISIONS | | | |
|-----------|---|-----------|------|
| REV | DESCRIPTION | DATE | APPV |
| B | Updated dimensions; Added new title block | 10-JUL-12 | SAH |
| C | Updated socket look and dim.; Updated crimp ring dim. | 29-OCT-12 | SAH |



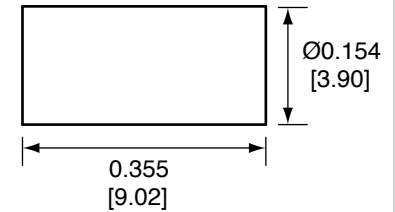
SIDE VIEW



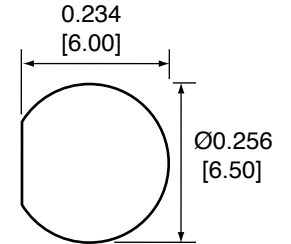
SOCKET



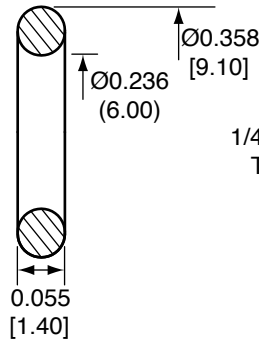
HEAT SHRINK



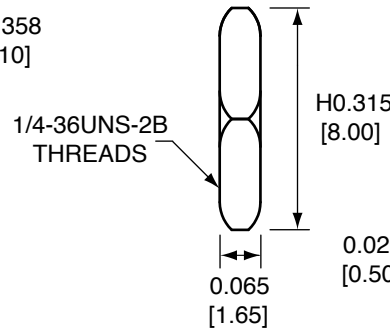
CRIMP RING



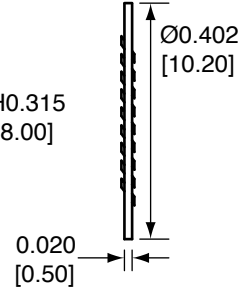
RECOMMENDED MOUNTING HOLE



O-RING



NUT



WASHER


CONSMSA014 ASSEMBLY INSTRUCTIONS

- Strip the cable to recommended dimensions.
- Slip heat shrink and crimp ring onto stripped cable.
- Insert o-ring into groove in the nut on body.
- Solder the socket to the center conductor.
- Insert the socket, center conductor, and insulation into the body.
- Wrap the braid around the tail of the body and crimp the ring with 0.128" hex crimp tool (or one labeled for use with RG-174 cable).
- Use heat shrink to cover crimp.
- Use the nut and washer to secure the connector to a case. (2.50mm maximum wall thickness)

NOTES: (UNLESS OTHERWISE SPECIFIED)

- ALL DIMENSIONS ARE IN INCHES [mm].
- DIMENSIONS APPLY AFTER FINISHING.
- MANUFACTURE TO BE COMPLIANT WITH EU RoHS DIRECTIVE.
- SAFETY BREAK ALL SHARP CORNERS AND EDGES .02 MAXIMUM.

WARNING: THIS DRAWING CONTAINS PROPRIETARY INFORMATION THAT IS THE SOLE PROPERTY OF LINX TECHNOLOGIES, AND SHALL BE TREATED AS SUCH. NO DISCLOSURE OR REPRODUCTION OF THIS DOCUMENT IS PERMITTED, IN WHOLE OR IN PART, WITHOUT THE EXPRESS WRITTEN PERMISSION OF LINX TECHNOLOGIES OR ITS DESIGNATED AGENTS.

| | | |
|-----------|--|---|
| MATERIAL: | TOLERANCES: .020 [0.50]-.200 [5.00]= ±.008 [0.20] .200 [5.00]-1.200 [30.00]= ±.016 [0.40] 1.20 [30.0]-4.75 [120.0]= ±.024 [0.60] 4.75 [120.0]-12.40 [315.0]= ±.040 [1.0] | PROJECTION:  ANGLES: ±1° |
| FINISH: | DRAWN: B.MURPHY ENGR: S.HOGAN | DT: 10-JUL-12 DT: 10-JUL-12 |



TITLE:
SMA FEMALE BULKHEAD MOUNT CABLE
END CRIMP WITH O-RING FOR RG174 CABLE

| | | |
|------------------|------------------------|-----------------|
| SIZE A | DWG. NO. CONSMSA014 | REV C |
| SCALE: 2:1 | DO NOT SCALE DRAWING | SHEET 1 OF 1 |

Mouser Electronics

Authorized Distributor

Click to View Pricing, Inventory, Delivery & Lifecycle Information:

[TE Connectivity:](#)

[CONSMA014](#)