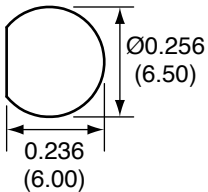


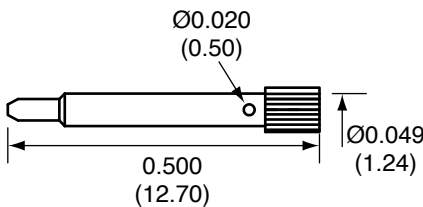
Description	Material	Finish
Body	Brass	Nickel
Pin	BE CU	Gold
Insulation	PTFE	N/A
O Ring	Si Rubber	Rubber
Washer	Brass	Nickel
Nut	Brass	Nickel
Spacer	PTFE	N/A
Support	Brass	Nickel
Heat Shrink	Polyolefin	Black

RECOMMENDED MOUNTING HOLE



REVISIONS			
REV	DESCRIPTION	DATE	APPV
A	Add heat shrink, new frame, revised stripping instruct./dims	4/26/10	CJ
B	Added new title block; update material	11-JUL-12	BPM

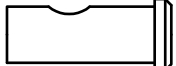
PIN



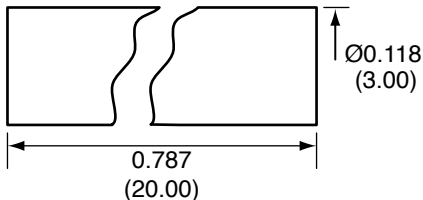
SPACER



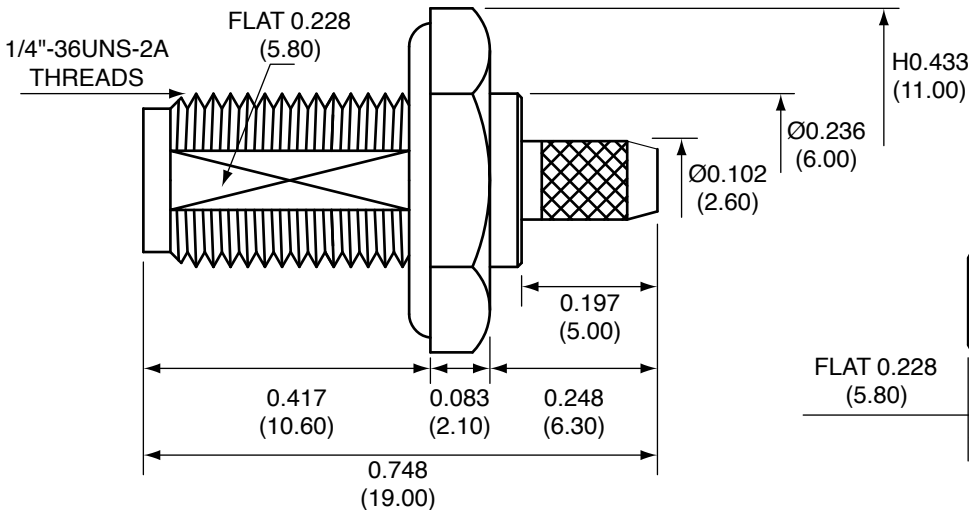
SUPPORT



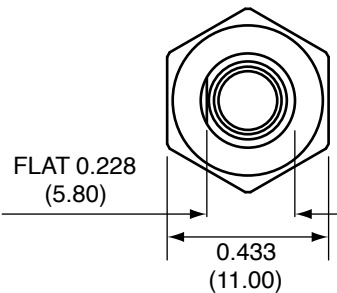
HEAT SHRINK



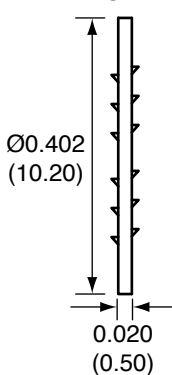
SIDE VIEW



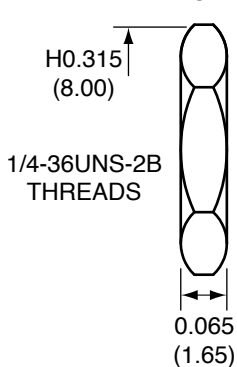
BACK VIEW



WASHER



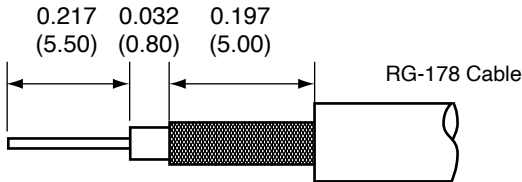
NUT



CONREVSMA014-R178 ASSEMBLY INSTRUCTIONS

- Strip the cable to the recommended dimensions.
- Slide the coax into the support until the outside insulation bottoms out against the inside shoulder of the support.
- Solder the support onto the braid.
- Place the spacer onto the center conductor.
- Solder or crimp the pin onto the center conductor.
- Insert the pin, center conductor, spacer, and support into the body until the top of the pin is flush to end of the body.
- Crimp the tail of the body onto the support with a 0.093" hex crimp tool.


RECOMMENDED CABLE STRIPPING DIMENSIONS



NOTES: (UNLESS OTHERWISE SPECIFIED)

- ALL DIMENSIONS ARE IN INCHES [mm].
- DIMENSIONS APPLY AFTER FINISHING.
- MANUFACTURE TO BE COMPLIANT WITH EU RoHS DIRECTIVE.
- SAFETY BREAK ALL SHARP CORNERS AND EDGES .02 MAXIMUM.

WARNING: THIS DRAWING CONTAINS PROPRIETARY INFORMATION THAT IS THE SOLE PROPERTY OF LINX TECHNOLOGIES, AND SHALL BE TREATED AS SUCH. NO DISCLOSURE OR REPRODUCTION OF THIS DOCUMENT IS PERMITTED, IN WHOLE OR IN PART, WITHOUT THE EXPRESS WRITTEN PERMISSION OF LINX TECHNOLOGIES OR ITS DESIGNATED AGENTS.

MATERIAL:	TOLERANCES: .020 [0.50]-.200 [5.00]= ±.008 [0.20] .200 [5.00]-1.200 [30.00]= ±.016 [0.40] 1.20 [30.0]-4.75 [120.0]= ±.024 [0.60] 4.75 [120.0]-12.40 [315.0]= ±.040 [1.0]	PROJECTION:  ANGLES: ±1°
FINISH:	DRAWN: CJ	DT: 4/26/10
	ENGR:	DT:



TITLE:
**RP-SMA FEMALE BULKHEAD MOUNT CABLE
END CRIMP WITH O-RING FOR RG178 CABLE**

SIZE	DWG. NO.	REV
A	CONREVSMA014-R178	B
SCALE: 2:1	DO NOT SCALE DRAWING	SHEET 1 OF 1

Mouser Electronics

Authorized Distributor

Click to View Pricing, Inventory, Delivery & Lifecycle Information:

[TE Connectivity:](#)

[CONREVSMA014-R178](#)