



# FORGE DRAWER CONNECTORS

## Modular Power Interconnects

TE Connectivity's (TE) new FORGE drawer connectors are modular power interconnects for designers of power systems and electrical hardware, including data communications applications.

Engineers often have difficulty finding exactly the right housing and contact type for power connect applications. The FORGE drawer line's modular tooling platform provides a wide variety of different configuration possibilities. A single housing can have up to 10 modules with the flexibility to use one of five different contact types in each module. This flexibility enables customers to get a perfect fit for their application every time, without having to compromise by using housings that are not a match, and without the cost and lead-times associated with tooling new housings every time a new configuration is needed.

### Applications:

- Data centers
- Industrial
- Energy
- Medical

[te.com/products/FORGEDrawer](https://te.com/products/FORGEDrawer)

# FORGE DRAWER CONNECTORS

Modular Power Interconnects

## Mechanical

- Insertion force (max): 16.8N
- Extraction force (max): 10.6N
- Operating temperature: -40°C to 105°C
- Durability: 250 cycles minimum

## Electrical

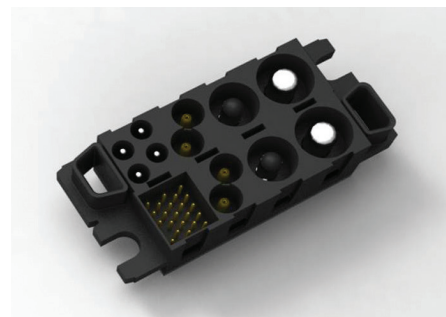
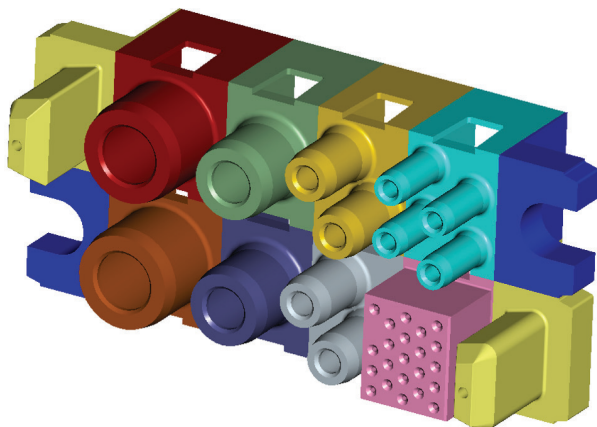
- Current rating: refer to Figure 1 of Product Specification
- Temperature rise vs current: 30°C and 50°C maximum T-rise at specified current
- Voltage rating, size #22 signal contacts: 50V AC
- Voltage rating, power contacts: 250V AC
- Higher voltage configurations available - contact TE for details
- Insulation Resistance: 5000 MΩ minimum

## Specifications

Application Specification # 114-13299

Product Specification # 108-2323

Product example with all five module types



## Key Features

### Greater modularity supports evolving design trends

- TE offers the broadest portfolio
- Available configurations include 2x2 through 2x5, as well as a 1x5 configuration
- In each module, any one of the five different contact types can be used, ranging from very high power (size #0) to signal contacts (size #22)

### Cost efficient design saves time and money

- New size #0 and size #4 touch-proof pin contact designs
- No need to waste time and money on new tooling or lead time for new parts

### Ability to use existing tooling and contacts makes it easy to use

- Leverage existing infrastructure of application tooling that is widely deployed throughout the market
- Compatible -- used with existing and commonly used contacts

# FORGE DRAWER CONNECTORS

Modular Power Interconnects

## FORGE Drawer Assembly Configurations

| CONFIGURATION | MODULAR ASSIGNMENT                                 | TYPE           | PART NUMBER |
|---------------|--|----------------|-------------|
| 1x5           | single row = 0,0,0,0,0                             | Pin Housing    | 2212282-1   |
|               |  | Socket Housing | 2212284-1   |
| 2x2           | lower row = 4,4<br>upper row = 4,4                 | Pin Housing    | 2212243-1   |
|               |  | Socket Housing | 2212245-1   |
| 2x3           | lower row = 0,0,0<br>upper row = 0,0,0             | Pin Housing    | 2212254-1   |
|               |  | Socket Housing | 2212256-1   |
| 2x3           | lower row = 4,12,22<br>upper row = 4,12,12         | Pin Housing    | 2212174-1   |
|               |  | Socket Housing | 2212173-1   |
| 2x3           | lower row = 0,0,22<br>upper row = 0,0,22           | Pin Housing    | 2212305-1   |
|               |  | Socket Housing | 2212307-1   |
| 2x3           | lower row = 4,4,4<br>upper row = 4,4,4             | Pin Housing    | 2212309-1   |
|               |  | Socket Housing | 2212311-1   |
| 2x4           | lower row = 0,4,4,22<br>upper row = 0,4,4,12       | Pin Housing    | 2212320-1   |
|               |  | Socket Housing | 2212327-1   |
| 2x4           | lower row = 4,22,4,4<br>upper row = 4,22,4,4       | Pin Housing    | 2212290-1   |
|               |  | Socket Housing | 2212292-1   |
| 2x4           | lower row = 4,4,4,12<br>upper row = 4,4,4,12       | Pin Housing    | 2212367-1   |
|               |  | Socket Housing | 2212369-1   |
| 2x5           | lower row = 0,0,0,4,8<br>upper row = 0,0,0,4,4     | Pin Housing    | 2212172-1   |
|               |  | Socket Housing | 2212171-1   |
| 2x5           | lower row = 0,0,0,4,12<br>upper row = 0,0,0,4,4    | Pin Housing    | 2212329-1   |
|               |  | Socket Housing | 2212331-1   |
| 2x5           | lower row = 0,4,4,8,12<br>upper row = 0,4,4,8,12   | Pin Housing    | 2212250-1   |
|               |  | Socket Housing | 2212252-1   |
| 2x5           | lower row = 0,4,8,12,22<br>upper row = 0,4,8,12,22 | Pin Housing    | 2212339-1   |
|               |  | Socket Housing | 2212341-1   |
| 2x5           | lower row = 0,0,0,4,4<br>upper row = 0,0,0,4,4     | Pin Housing    | 2212170-1   |
|               |  | Socket Housing | 2212169-1   |
| 2x5           | lower row = 0,0,22,4,4<br>upper row = 0,0,22,4,4   | Pin Housing    | 2212293-1   |
|               |  | Socket Housing | 2212295-1   |
| 2x5           | lower row = 0,0,8,8,22<br>upper row = 0,0,8,8,22   | Pin Housing    | 2212301-1   |
|               |  | Socket Housing | 2212303-1   |

## Contacts

| SIZE    | TYPE   | DESCRIPTION                    | PART NUMBER |
|---------|--------|--------------------------------|-------------|
| Size 0  | Pin    | Standard, Crimp Termination    | 1766811-1   |
| Size 0  | Pin    | Probe-proof, Crimp Termination | 2212374-1   |
| Size 0  | Socket | Standard, Crimp Termination    | 6648405-1   |
| Size 4  | Pin    | Standard, Crimp Termination    | 1766232-1   |
| Size 4  | Pin    | Post-Mate, Crimp Termination   | 2212216-1   |
| Size 4  | Pin    | Probe-proof, Crimp Termination | 2212372-1   |
| Size 4  | Socket | Standard, Crimp Termination    | 6648434-1   |
| Size 8  | Pin    | .125 POWERBAND Pin, Standard   | 213840-8    |
| Size 8  | Pin    | .125 POWERBAND Pin, Pre-Mate   | 1-213840-0  |
| Size 8  | Socket | .125 POWERBAND Socket          | 213843-7    |
| Size 12 | Pin    | Crimp, Standard                | 1766193-1   |
| Size 12 | Pin    | Crimp, Pre-Mate                | 1766195-1   |
| Size 12 | Pin    | Crimp, Post-Mate               | 1766196-1   |
| Size 12 | Socket | Crimp                          | 6648318-1   |
| Size 12 | Socket | Hot-Plug Crimp                 | 1648384-1   |
| Size 22 | Pin    | HDP-22 crimp-snap pin          | 1658670-2   |
| Size 22 | Socket | HDP-22 crimp-snap socket       | 1658686-2   |

Contact TE with requests for other housing configurations.

# Associated Content

2-Piece Power Connectors Quick Reference Guide ([Doc # 4-17773458-1](#))

Bus Bar Connectivity Quick Reference Guide ([Doc # 1-1773701-9](#))

## For More Information

### TE Technical Support Center

|                   |                    |
|-------------------|--------------------|
| USA:              | 1.800.522.6752     |
| Canada:           | 1.905.475.6222     |
| Mexico:           | 52.0.55.1106.0800  |
| Latin/S. America: | 54.0.11.4733.2200  |
| Germany:          | 49.0.6251.133.1999 |
| UK:               | 44.0.800.267666    |
| France:           | 33.0.1.3420.8686   |
| Netherlands:      | 31.0.73.6246.999   |
| China:            | 86.0.400.820.6015  |

**[te.com/products/FORGEdrawer](http://te.com/products/FORGEdrawer)**

FORGE, POWERBAND, TE Connectivity, TE, TE Connectivity (logo) and Every Connection Counts are trademarks. All other logos, products and/or company names referred to herein might be trademarks of their respective owners.

The information given herein, including drawings, illustrations and schematics which are intended for illustration purposes only, is believed to be reliable. However, TE Connectivity makes no warranties as to its accuracy or completeness and disclaims any liability in connection with its use. TE Connectivity's obligations shall only be as set forth in TE Connectivity's Standard Terms and Conditions of Sale for this product and in no case will TE Connectivity be liable for any incidental, indirect or consequential damages arising out of the sale, resale, use or misuse of the product. Users of TE Connectivity products should make their own evaluation to determine the suitability of each such product for the specific application.

©2016 TE Connectivity Ltd. family of companies. All Rights Reserved.

3-1773463-3 01/16 DND

# Mouser Electronics

Authorized Distributor

Click to View Pricing, Inventory, Delivery & Lifecycle Information:

[TE Connectivity:](#)

[2212341-1](#)