

REFLOW CAPABLE ECONOMY POWER HEADERS

TE Connectivity's (TE) reflow capable Economy Power (EP) Headers are designed for customers who intend to streamline manufacturing processes with simple reflow soldering of PCB assemblies. The reflow capable EP Headers product line builds on a tested solution for wire-to-board applications. The thermoplastic housing is designed to withstand high temperatures associated with reflow soldering. This allows for easy transition to a full reflow assembly process.

Headers are designed with shrouding and a positive audible latching for error resistant assembly. The standard 0.156" centerline allows for mating with TE's existing Economy Power II wire-to-board connectors.

Applications

- Appliances
- HVAC Equipment
- Industrial Machinery
- Power Supplies
- Security Systems
- Elevator/Escalator

Electrical

- 12 A max, 600 VAC
- 1500 VAC dielectric withstanding voltage

Mechanical

- 0.156" [3.96 mm] centerline
- Operating temperature: -55 °C to +105 °C
- Flammability UL94V-0

Product Specifications

- Product Specifications: [108-2297](#)
- Application Specifications: 114-133095
- UL Certificate Number: 20170328-E28476



Materials

- Housing - high temperature thermoplastic
- Contact - copper alloy, Sn over Ni plating



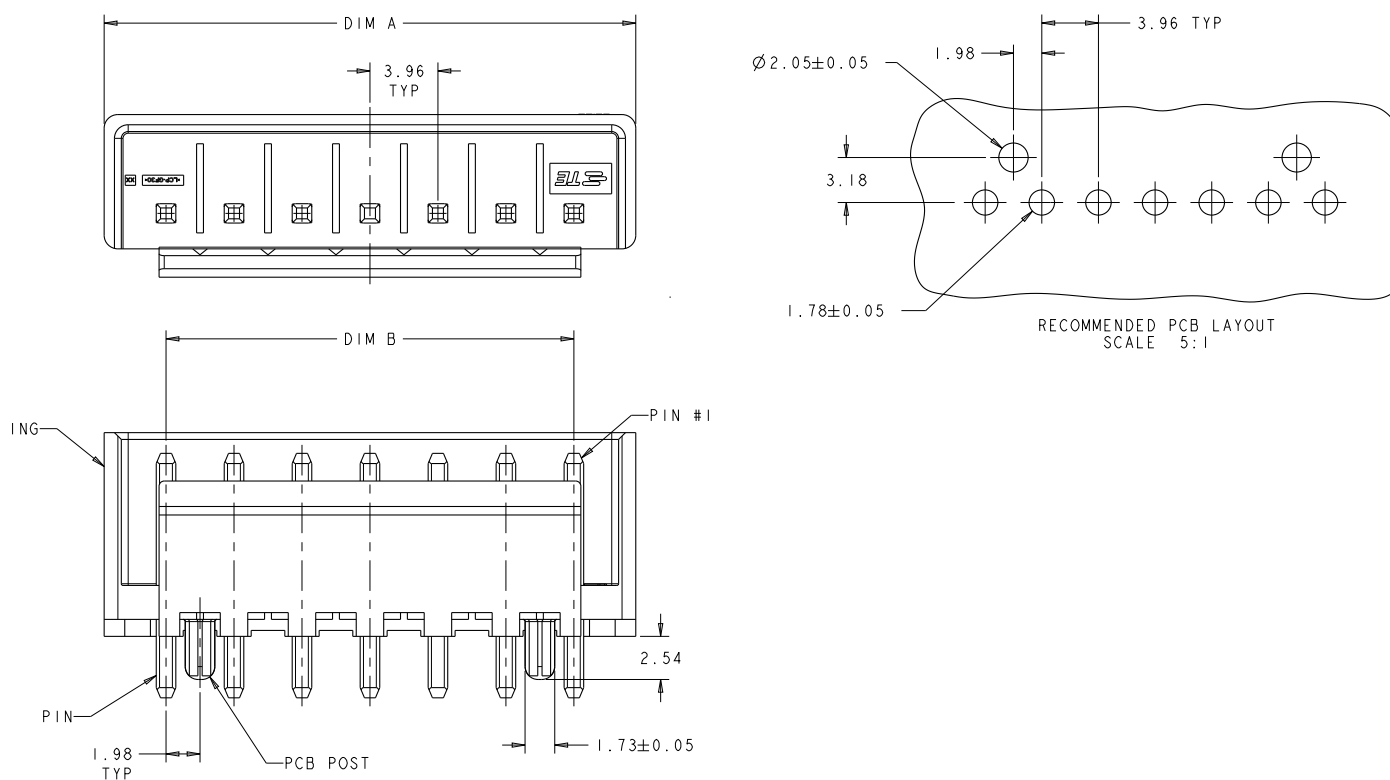
Benefits

- High temperature, reflow capable housing and pin-in-paste soldering allows for transition to reflow PCB assembly
- Positive audible latching for error resistant assembly
- Shrouded header eliminates mis-mating due to alignment of the receptacle/header.
- Low contact mating force

Product Selection Information

| Part Number | Description | Positions | Style | Dimension A | Dimension B |
|---------------------------|--------------------------------------|-----------|------------|-------------|-------------|
| 2213738-2 | 2P HIGH TEMP SHROUDED EP HEADER ASSY | 2 | Single row | 11.17 in. | 3.96 in. |
| 2213738-3 | 3P HIGH TEMP SHROUDED EP HEADER ASSY | 3 | Single row | 15.13 in. | 7.92 in. |
| 2213738-4 | 4P HIGH TEMP SHROUDED EP HEADER ASSY | 4 | Single row | 19.09 in. | 11.88 in. |
| 2213738-5 | 5P HIGH TEMP SHROUDED EP HEADER ASSY | 5 | Single row | 23.05 in. | 15.84 in. |
| 2213738-6 | 6P HIGH TEMP SHROUDED EP HEADER ASSY | 6 | Single row | 27.01 in. | 19.80 in. |
| 2213738-7 | 7P HIGH TEMP SHROUDED EP HEADER ASSY | 7 | Single row | 30.97 in. | 23.76 in. |
| 2213738-8 | 8P HIGH TEMP SHROUDED EP HEADER ASSY | 8 | Single row | 34.93 in. | 27.72 in. |

Dimensions



All dimensions in inches.

te.com

© 2017 TE Connectivity. All Rights Reserved. TE, TE Connectivity, and the TE connectivity (logo) are trademarks of the TE Connectivity Ltd. family of companies. Other logos, product and Company names mentioned herein may be trademarks of their respective owners.

While TE has made every reasonable effort to ensure the accuracy of the information in this brochure, TE does not guarantee that it is error-free, nor does TE make any other representation, warranty or guarantee that the information is accurate, correct, reliable or current. TE reserves the right to make any adjustments to the information contained herein at any time without notice. TE expressly disclaims all implied warranties regarding the information contained herein, including, but not limited to, any implied warranties of merchantability or fitness for a particular purpose. The dimensions in this catalog are for reference purposes only and are subject to change without notice. Specifications are subject to change without notice. Consult TE for the latest dimensions and design specifications.

1-1773923-4 BH 05/2017

USA: +1 (800) 522-6752
 Canada: +1 (905) 475-6222
 Mexico: +52 (0) 55-1106-0800
 Latin/S. America: +54 (0) 11-4733-2200
 Germany: +49 (0) 6251-133-1999
 UK: +44 (0) 800-267666
 France: +33 (0) 1-3420-8686
 The Netherlands: +31 (0) 73-6246-999
 China: +86 (0) 400-820-6015

Mouser Electronics

Authorized Distributor

Click to View Pricing, Inventory, Delivery & Lifecycle Information:

[TE Connectivity:](#)

[2213738-6](#)