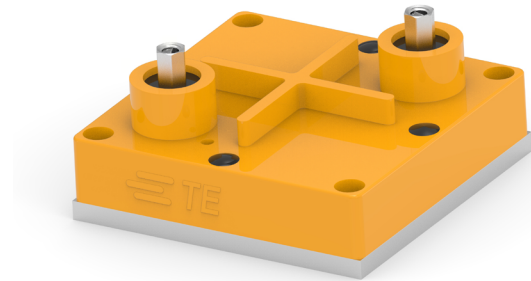


THICK FILM HIGH POWER RESISTORS

TYPE BDS SERIES

INTRODUCTION

TE Connectivity (TE) introduces the high power version of our BDS thick film resistors that are able to deliver 1000 Watt and 2000 Watt power dissipation capability with an easy-mounting 76 mm x 76 mm case. The BDS series offers high power density over a wide range of ohmic values (500 m Ω - 1000 Ω). Available with two easy to connect terminals, the resistors are made from quality materials for enhanced reliability and stability with very low partial discharge.



FEATURES

- High energy rating
- Low Inductance
- Resistor element electrically isolated
- High dielectric strength
- Small footprint

APPLICATIONS

- Power semiconductor balancing
- Motor control
- Inrush current limiting

ELECTRICAL CHARACTERISTICS

	BDS 1K	BDS 2K
Power Rating (85°C mounting plate)	1000 W	2000 W
Ohmic value minimum (Ω)	0.5	0.5
Ohmic value maximum (Ω)	1000	1000
Resistance tolerance	$\pm 10 \%$	
Maximum operating voltage	2000 VDC	
Temperature coefficient	± 250 PPM/ $^{\circ}\text{C}$	
Dielectric strength	6 kV standard	
Operating temperature range	$-55^{\circ}\text{C} \sim 85^{\circ}\text{C}$	
Resistor element	Thick film on alumina substrate	
Terminal screws	#10-32	
Maximum contacts torque	10 in-lb	
Mounting screws	#8-32	
Maximum mounting torque	15 in-lb	
Creepage distance	50 mm \pm 1 mm (min)	

Thick Film High Power Resistors

Type BDS Series

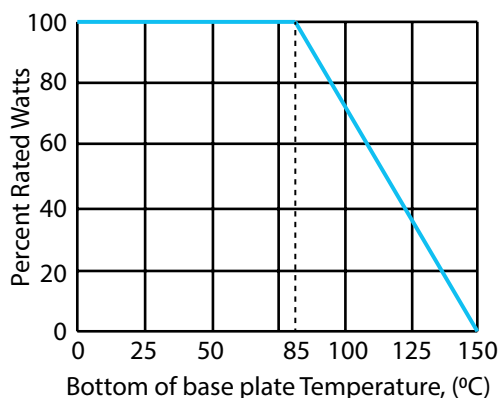
		BDS 1K	BDS 2K
Inductance typical of frequencies	100 Hz	0.14367 μ H	-176.703 μ H
	120 Hz	0.18943 μ H	-152.758 μ H
	1 kHz	0.34512 μ H	-39.8951 μ H
	10 kHz	0.20133 μ H	-25.6058 μ H
	120 kHz	0.16525 μ H	-25.6180 μ H

ENVIRONMENTAL CHARACTERISTICS

Characteristic		Rating	
		Continuous	Pulse
Rated power, maximum current and heat sink plate temperature limited	BDS 1K	1000 W	-
	BDS 2K	2000 W	-
Operating voltage		$\sqrt{P \cdot R}$	N/A
Maximum applied voltage, ohms law limited		223 V	2000 VDC
Maximum current		10 A	53.33 A
Critical resistance; below this resistance power has to be de-rated due to exceeding current	BDS 1K	Max. 10 Ω	-
	BDS 2K	Max. 20 Ω	-

Characteristic		Test Method	Standard
Short time overload		$1.14 \times \sqrt{P \cdot R} / 10 \text{ sec @ } 70^\circ \text{C}$	Max. % $\Delta R_{sto} = \pm(2\% + 0.05 \Omega)$
Moisture resistance	BDS 1K	1000 hrs @ 40°C , 90-95 % RH	$\leq 1\%$
	BDS 2K	1750 hrs @ 40°C , 90-95 % RH	$\leq 1\%$
Thermal shock		MIL-STD-202, Method 107	-
Vibration, electrical		MIL-STD-202, Method 201	$\pm 2\%$ Resistance
Vibration, mechanical		MIL-STD-202, Method 201	No loose terminal screws
Load life	BDS 1K	1000 hrs 90 min ON / 30 min OFF	$\leq 1\%$
	BDS 2K	1750 hrs 90 min ON / 30 min OFF	-
Pulse tolerance		52 μ F @ 2 kV / 60 sec intervals, 104 J, 20,000 pulses	$\leq 1\%$
Dielectric strength		6 kVDC for 1 min	$\leq 1\%$

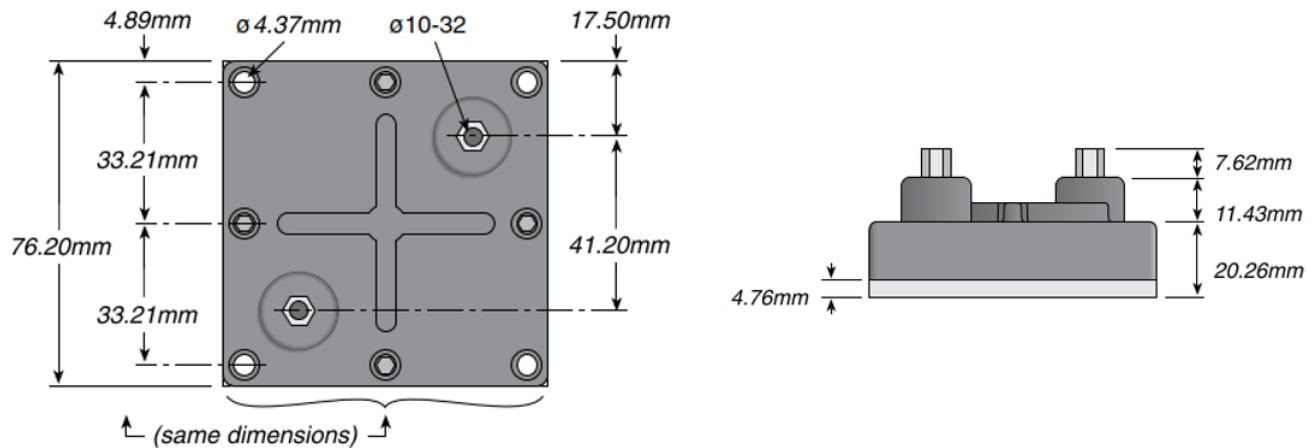
DERATING CURVE



Thick Film High Power Resistors

Type BDS Series

DIMENSIONS (Unit: mm)



Application Notes:

When designing your system, please follow these guidelines which are essential to the performance of the resistor.

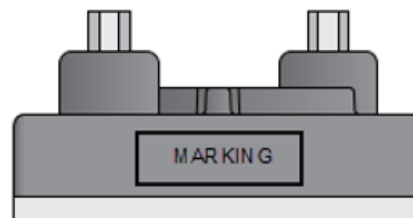
Heatsink plate (base plate of the resistor) temperature must be monitored to establish the correct de-rating. Reliable technique is to attach a thermocouple to the side of the base plate of the resistor. Temperature of the plastic housing or heatsink cannot be used to establish the rating of the resistor. Usage of laser thermometers should be avoided.

To obtain a power rating of 1000 W or 2000 W, the bottom case temperature must not exceed 85 °C. This can only be achieved if the thermal conduction to the heatsink $R_{th-cs} < 0.025 \text{ }^{\circ}\text{K/W}$. This value can be reached by using a thermal transfer compound with a heat conductivity of 1 W/mK. The flatness of the cooling plate must be better than 0.05 mm overall. The roughness of the surface should not exceed 6.4 μm .

Due to very high power density, only liquid cooled heatsinks are recommended for applications when >300 W power rating is desired.

A correctly designed heatsink should have more than 2 cooling pipes under the surface of the resistor.

LASER MARKING



TE BDS A 1K 1R0 K
DC MX

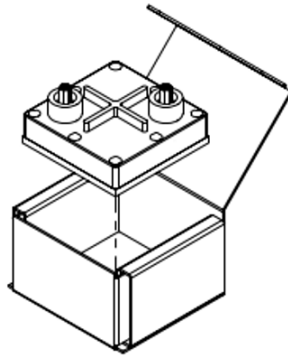
1. Company name or Logo
2. TE Series Number
3. Circuit type
4. Power rating
5. Resistance
6. Tolerance
7. Date code
8. Country of origin

Thick Film High Power Resistors

Type BDS Series

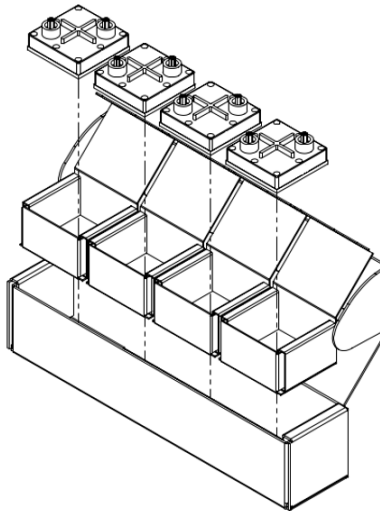
PACKAGING

Unit Box Dimensions (mm)



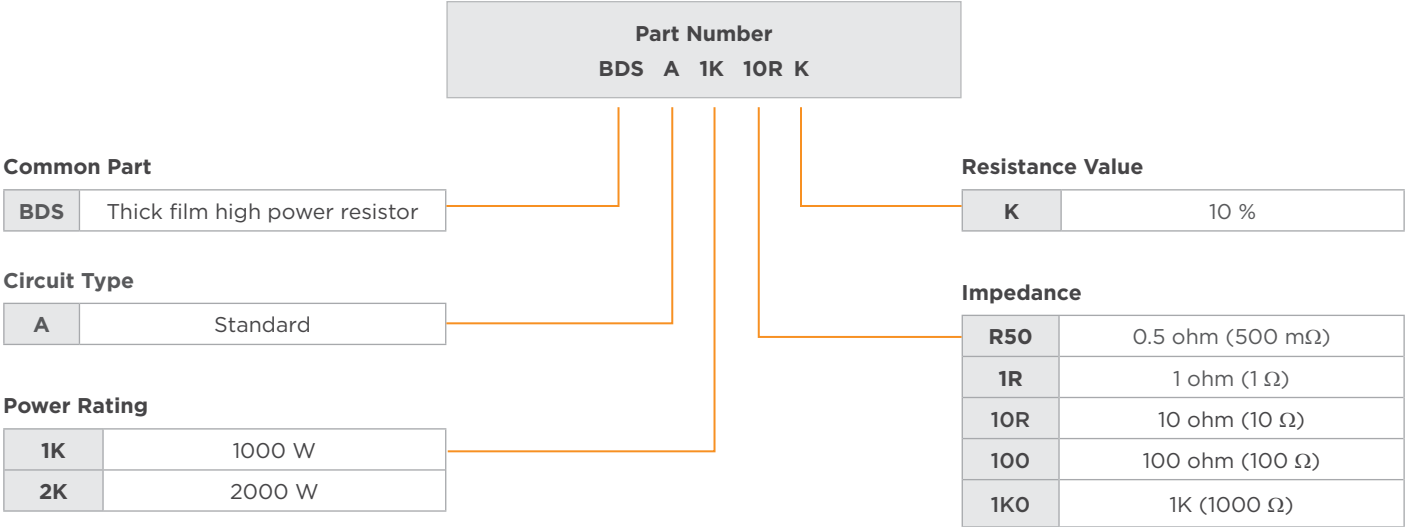
	BDS 1K	BDS 2K
L	93.34	93.34
W	86.63	86.63
H	58.72	58.72
Quantity per box	1	1
Gross Weight (GR's)	483.08	483.08

Outer Box Dimensions (mm)



	BDS 1K	BDS 2K
L	419.10	419.10
W	90.17	90.17
H	90.80	90.80
Quantity per box	4	4

ORDERING INFORMATION



te.com

©2024 TE Connectivity Ltd. All Rights Reserved.

TE Connectivity, TE connectivity (logo) and Every Connection Counts are trademarks owned or licensed by the TE Connectivity Ltd. family of companies. All other logos, products and/or company names referred to herein might be trademarks of their respective owners.

While TE has made every reasonable effort to ensure the accuracy of the information in this document, TE does not guarantee that it is error-free, nor does TE make any other representation, warranty or guarantee that the information is accurate, correct, reliable or current. TE reserves the right to make any changes to the information contained herein without prior notice. TE Connectivity assumes only those obligations set forth in the terms and conditions for this product and shall in no event be liable for any incidental, indirect, or consequential damages arising out of the sale, resale, use, or misapplication of the product. TE expressly disclaims any implied warranties with respect to the information contained herein, including, but not limited to, implied warranties of merchantability or fitness for a particular purpose. Dimensions, specifications and/or information contained herein are for reference purposes only and are subject to change without notice. Consult TE for the latest dimensions, specifications and/or information. Users of TE Connectivity products must make their own assessment as to whether the respective product is suitable for the respective desired application.

06/24 1773308-1 REV:A ED



Mouser Electronics

Authorized Distributor

Click to View Pricing, Inventory, Delivery & Lifecycle Information:

[TE Connectivity:](#)

[2176741-9](#) [3-2176741-3](#) [3-2176741-5](#) [BDSA1K2R7K](#) [BDSA1K470RK](#) [BDSA1K4R7K](#) [BDSA2K330RK](#) [1-2176741-7](#) [2-2176741-4](#) [BDSA1K39RK](#) [BDSA2K270RK](#) [2176741-4](#) [2176741-8](#) [3-2176741-1](#) [BDSA1KR68K](#) [BDSA2K27RK](#) [BDSA2K5R6K](#) [BDSA2K680RK](#) [1-2176741-5](#) [BDSA1K82RK](#) [BDSA2K120RK](#) [BDSA2K33RK](#) [BDSA2K4R7K](#) [1-2176741-0](#) [1-2176741-8](#) [2-2176741-3](#) [3-2176741-0](#) [BDSA1K180RK](#) [BDSA1KR82K](#) [3-2176741-6](#) [BDSA1K1R5K](#) [BDSA1K560RK](#) [BDSA2K39RK](#) [3-2176741-8](#) [BDSA1K220RK](#) [BDSA1K5R6K](#) [BDSA2K15RK](#) [BDSA2K18RK](#) [BDSA2K3R9K](#) [BDSA2KR82K](#) [1-2176741-2](#) [BDSA1K100RK](#) [BDSA2KR56K](#) [BDSA2K1R2K](#) [BDSA2K2R2K](#) [2176741-2](#) [BDSA1K27RK](#) [BDSA1K3R3K](#) [BDSA2K1R8K](#) [1-2176741-6](#) [2176741-6](#) [2-2176741-1](#) [BDSA1K15RK](#) [BDSA1K330RK](#) [BDSA2K56RK](#) [BDSA2K68RK](#) [BDSA2K6R8K](#) [1-2176741-3](#) [3-2176741-2](#) [BDSA1K10RK](#) [BDSA1K270RK](#) [BDSA1K47RK](#) [BDSA2K1R5K](#) [BDSA2K2R7K](#) [2176741-1](#) [3-2176741-4](#) [BDSA1K2R2K](#) [BDSA1K3R9K](#) [BDSA2K1R0K](#) [BDSA2K820RK](#) [2-2176741-0](#) [2-2176741-5](#) [2-2176741-9](#) [BDSA2K10RK](#) [BDSA2K560RK](#) [1-2176741-1](#) [BDSA2K390RK](#) [BDSA2KR68K](#) [2176741-7](#) [BDSA1K150RK](#) [BDSA1K8R2K](#) [BDSA1KR56K](#) [BDSA2K22RK](#) [2-2176741-6](#) [4-2176741-0](#) [BDSA1K1R2K](#) [3-2176741-7](#) [BDSA1K1R8K](#) [BDSA2K180RK](#) [1-2176741-9](#) [2176741-5](#) [2-2176741-2](#) [BDSA1K12RK](#) [BDSA1K33RK](#) [BDSA1K390RK](#) [BDSA2K220RK](#) [1-2176741-4](#) [2-2176741-7](#) [BDSA1K120RK](#) [BDSA1K18RK](#)