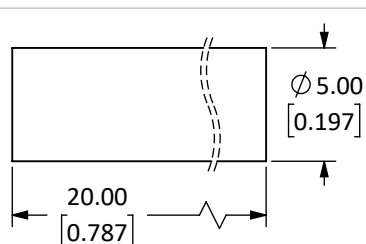
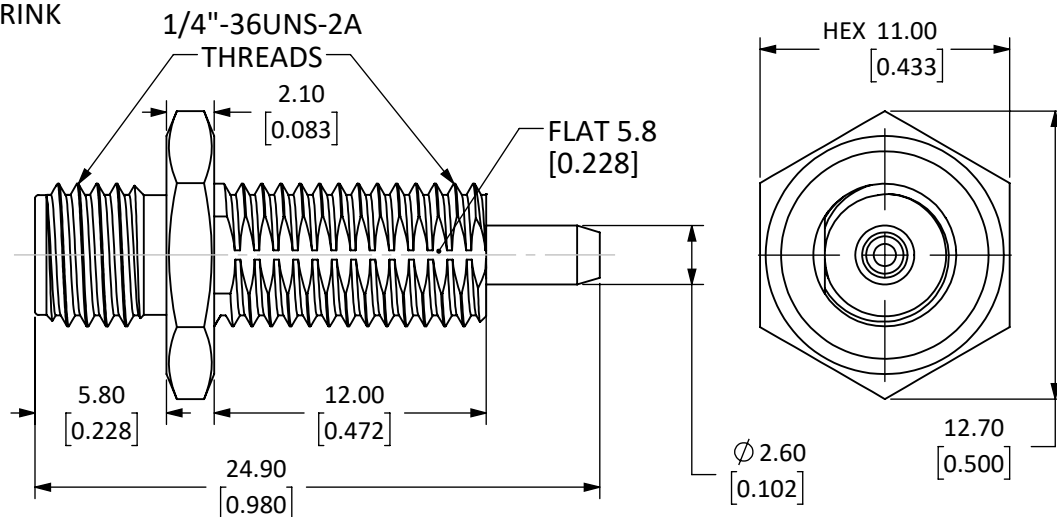
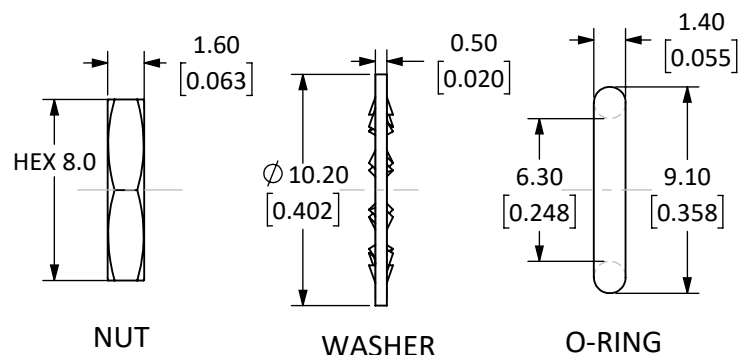


Connector: RP-SMA Jack (Male Pin)		
Termination: Cable End Crimp		
Connector Part	Material	Finish
Body	Brass	Nickel
Nut	Brass	Nickel
Washer	Brass	Nickel
Pin	Brass	Gold
Crimp Ring	Brass	Nickel
Insulator	PTFE	-
O-ring	Silicone Rubber	-
Heat Shrink	Polyolefin	Black

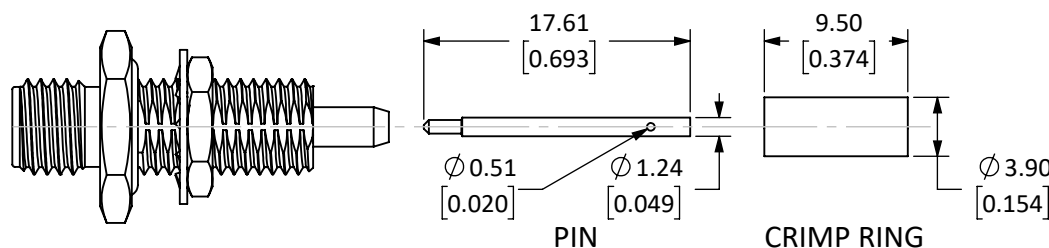


HEAT
SHRINK

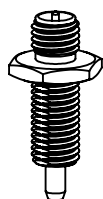
REVISIONS			
REV	DESCRIPTION	DATE	APPV
B	UPDATED FOOTPRINT AND DIMENSIONS; ADDED NEW TITLE BLOCK	11-JUL-12	SAH
C	UPDATED PIN MATERIAL FROM BeCu TO BRASS; UPDATED DIMENSION UNITS; ADDED SECOND SPECIFICATION SHEET		



- NOTES: (UNLESS OTHERWISE SPECIFIED)
1. ALL DIMENSIONS ARE IN MILLIMETERS [INCHES].
 2. DIMENSIONS APPLY AFTER FINISHING.
 3. MANUFACTURE TO BE COMPLIANT WITH EU RoHS DIRECTIVE, USE MATERIALS THAT DO NOT CONTAIN REACH SUBSTANCES OF VERY HIGH CONCERN >1000ppm, AND USE DRC CONFLICT-FREE SOURCED MATERIALS.
 4. SAFETY BREAK ALL SHARP CORNERS AND EDGES 0.5 MAXIMUM.
 - 5 SEE TABLE I FOR ELECTRICAL SPECIFICATIONS. (SHEET 2)
 - 6 SEE TABLE II FOR ENVIRONMENTAL SPECIFICATIONS. (SHEET 2)
 - 7 SEE TABLE III FOR MECHANICAL SPECIFICATIONS. (SHEET 2)



EXPLODED VIEW
SCALE 2 : 1



SCALE 1 : 1

WARNING: THIS DRAWING CONTAINS PROPRIETARY INFORMATION THAT IS THE SOLE PROPERTY OF LINX TECHNOLOGIES, AND SHALL BE TREATED AS SUCH. NO DISCLOSURE OR REPRODUCTION OF THIS DOCUMENT IS PERMITTED, IN WHOLE OR IN PART, WITHOUT THE EXPRESS WRITTEN PERMISSION OF LINX TECHNOLOGIES OR ITS DESIGNATED AGENTS.

MATERIAL:	INTERPRET DIMENSIONS AND TOLERANCES PER ASME Y14.5.		PROJECTION:
	.X ±.1 .XX ±.01 .XXX ±.005	ANGLES: ±1° SURFACE: √	
FINISH:	DRAWN: B.MURPHY	DT: 11-JUL-12	
	ENGR:	DT: 11-JUL-12	



159 ORT LANE
MERLIN, OR 97532

TITLE:
**RP-SMA JACK BULKHEAD
FOR RG-174 CBL W/HRDWR**

SIZE	DWG. NO.	REV
A	C-CONREVSMA015	C
SCALE: 3:1	DO NOT SCALE DRAWING	SHEET 1 OF 2

5 TABLE I

Electrical Data	Detail
Impedance	50 Ω
Frequency Range	0 to 6 GHz
Insulation Resistance	5 000 M Ω min.
Voltage Rating	1 000 V RMS
Contact Resistance	Center: ≤ 3.0 m Ω Outer: ≤ 2.5 m Ω
VSWR: f (GHz)	RG-174, or Equivalent 1.20+0.025f ?
Working Voltage	RG-174, or Equivalent \rightarrow 250 V RMS max. ?
Dielectric Withstanding Voltage	RG-174, or Equivalent \rightarrow 500 V RMS max. ?

6 TABLE II

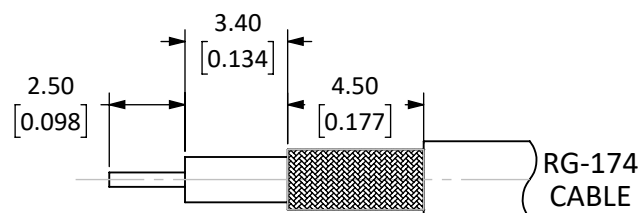
Environmental Data	Detail
Corrosion (Salt spray)	ASTM B-117
Thermal Shock	MIL-STD-202 Method 107 test condition B
Vibration	MIL-STD-202 Method 204 test condition D
Mechanical Shock	MIL-STD-202 Method 213 test condition I
Temperature Range	-55 °C to +155 °C
Environmental Compliance	RoHS

7 TABLE III

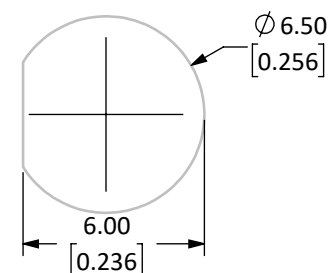
Mechanical Data	Detail
Mounting Type	Bulkhead Front Mount w/ O-Ring & Cable End Crimp
Fastening Type	1/4"-36 Threaded Coupling
Recommended Torque	0.57 N·m (5.0 in·lbs)
Coupling Nut Retention	60 lbs. min.
Connector Durability	500 cycles min.
Weight	4.5 g (0.16 oz)

ASSEMBLY INSTRUCTIONS

1. Strip the cable to the recommended dimensions.
2. Slip heat shrink and crimp ring onto stripped cable.
3. Solder the pin to the center-conductor.
4. Insert the pin, center-conductor, and insulation into the body.
5. Wrap the braid around the tail of the body and crimp the ring with a 0.137" hex crimp tool (or one labeled for use with the RG-174 cable).
6. Use heat shrink to cover crimp.



RECOMMENDED CABLE STRIPPING DIMENSIONS
CAN ALSO BE USED WITH:
RG-188A & RG-316



RECOMMENDED MOUNTING HOLE

SIZE	DWG. NO.	REV
A	C-CONREVSMA015	C
SCALE: 4:1	DO NOT SCALE DRAWING	SHEET 2 OF 2

Mouser Electronics

Authorized Distributor

Click to View Pricing, Inventory, Delivery & Lifecycle Information:

[TE Connectivity:](#)

[CONREV SMA015](#)