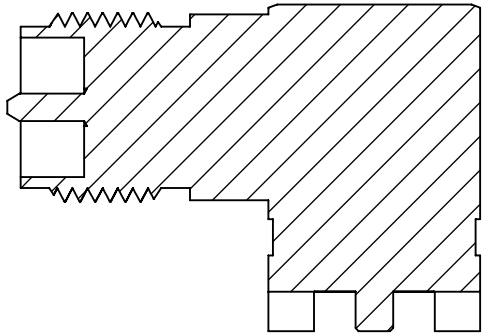
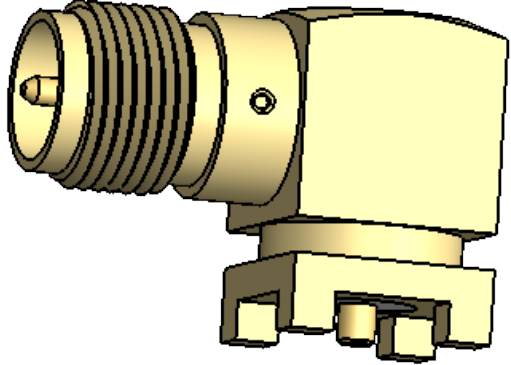
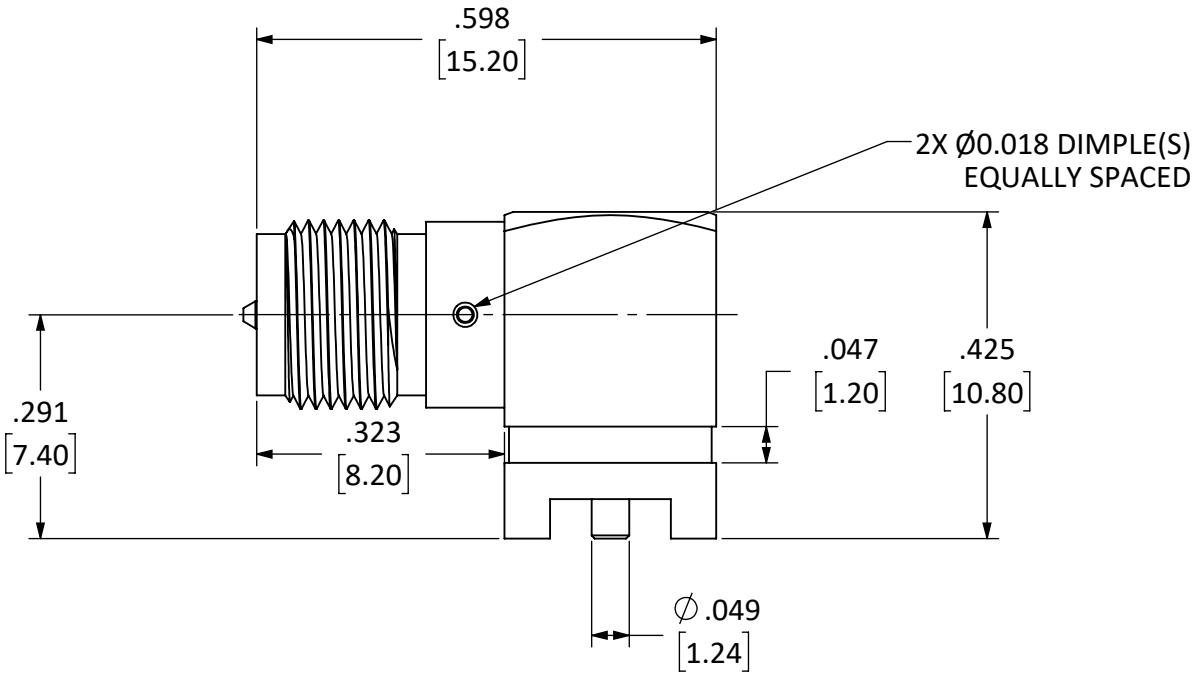
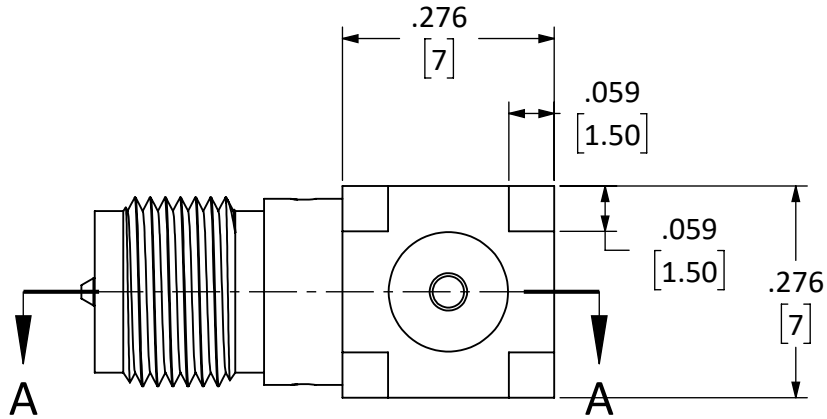



REVISIONS			
REV	DESCRIPTION	DATE	APPV
A	INITIAL RELEASE OF LINX SOLID MODEL		SAH



SECTION A-A



- NOTES: (UNLESS OTHERWISE SPECIFIED)
1. ALL DIMENSIONS ARE IN INCHES [mm].
 2. DIMENSIONS APPLY AFTER FINISHING.
 3. MANUFACTURE TO BE COMPLIANT WITH EU RoHS DIRECTIVE.

WARNING: THIS DRAWING CONTAINS PROPRIETARY INFORMATION THAT IS THE SOLE PROPERTY OF LINX TECHNOLOGIES, AND SHALL BE TREATED AS SUCH. NO DISCLOSURE OR REPRODUCTION OF THIS DOCUMENT IS PERMITTED, IN WHOLE OR IN PART, WITHOUT THE EXPRESS WRITTEN PERMISSION OF LINX TECHNOLOGIES OR ITS DESIGNATED AGENTS.				 159 ORT LANE MERLIN, OR 97532	
MATERIAL: BRASS PTFE				TITLE: RP-SMA JACK SURFACE MOUNT	
WEIGHT:				SIZE B	
FINISH: GOLD				DWG. NO. C-CONREVSMA002-SMD-G	
DRAWN: B.MURPHY ENGR: DASARATHAN				REV A	
DT: 3-APR-14 DT: 3-14-14				SCALE: 4:1 DO NOT SCALE DRAWING	
				SHEET 1 OF 1	

Mouser Electronics

Authorized Distributor

Click to View Pricing, Inventory, Delivery & Lifecycle Information:

[TE Connectivity:](#)

[CONREVSMA002-SMD-G](#)