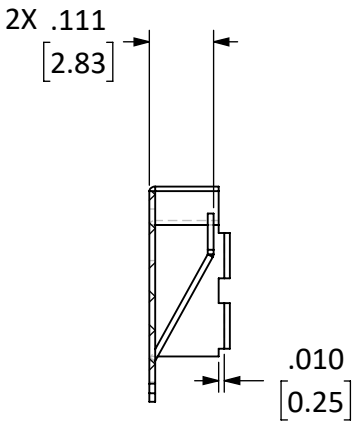



REVISIONS			
REV	DESCRIPTION	DATE	APPV
A	INITIAL RELEASE FROM X1	6-SEP-11	BPM
B	ADDED PART NUMBER TABLE AND SECOND SHEET; UPDATED NOTE 3	23-JUL-18	CLL

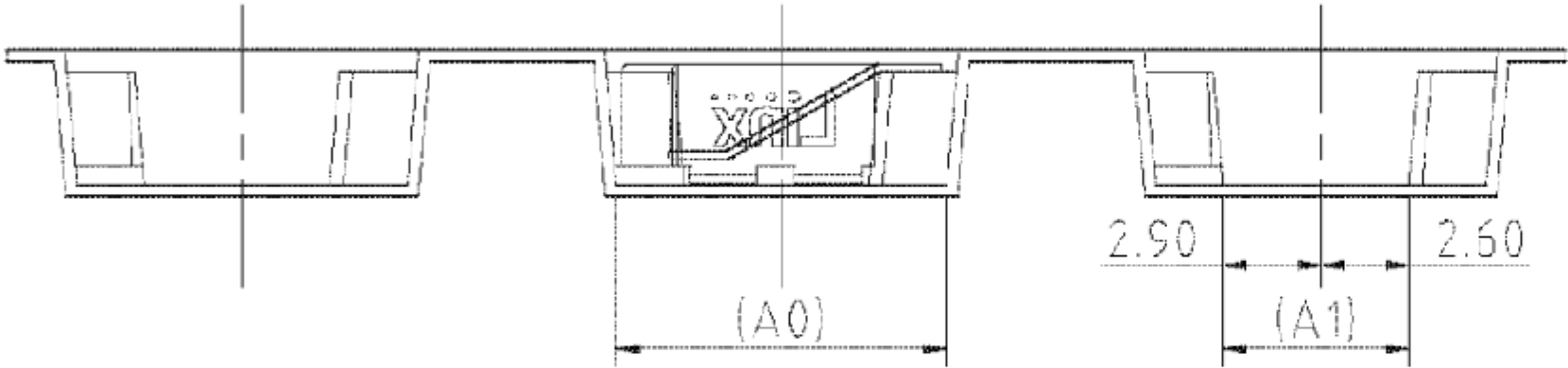
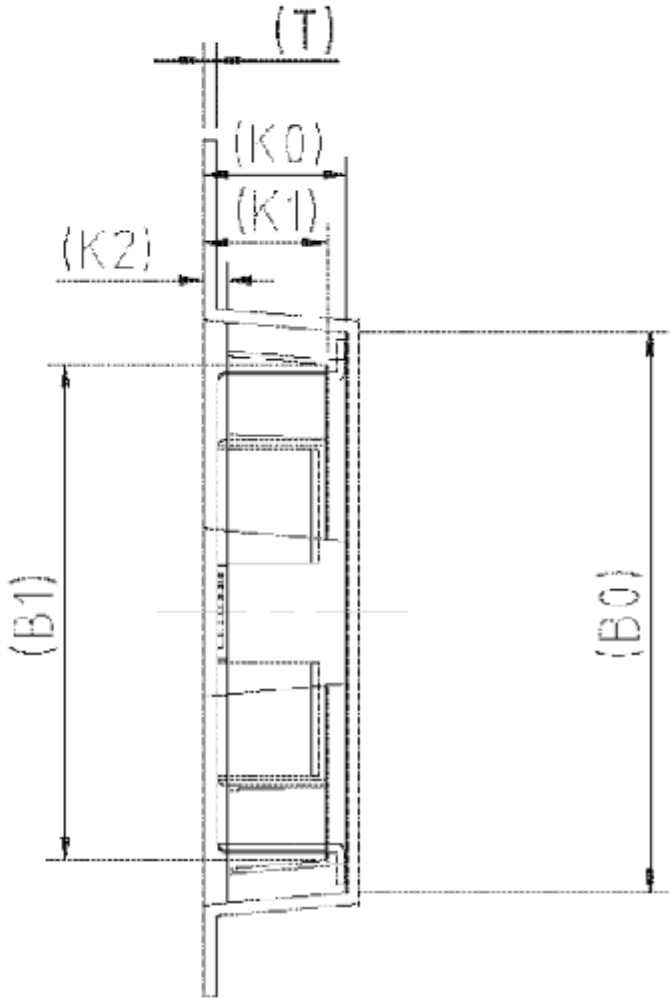
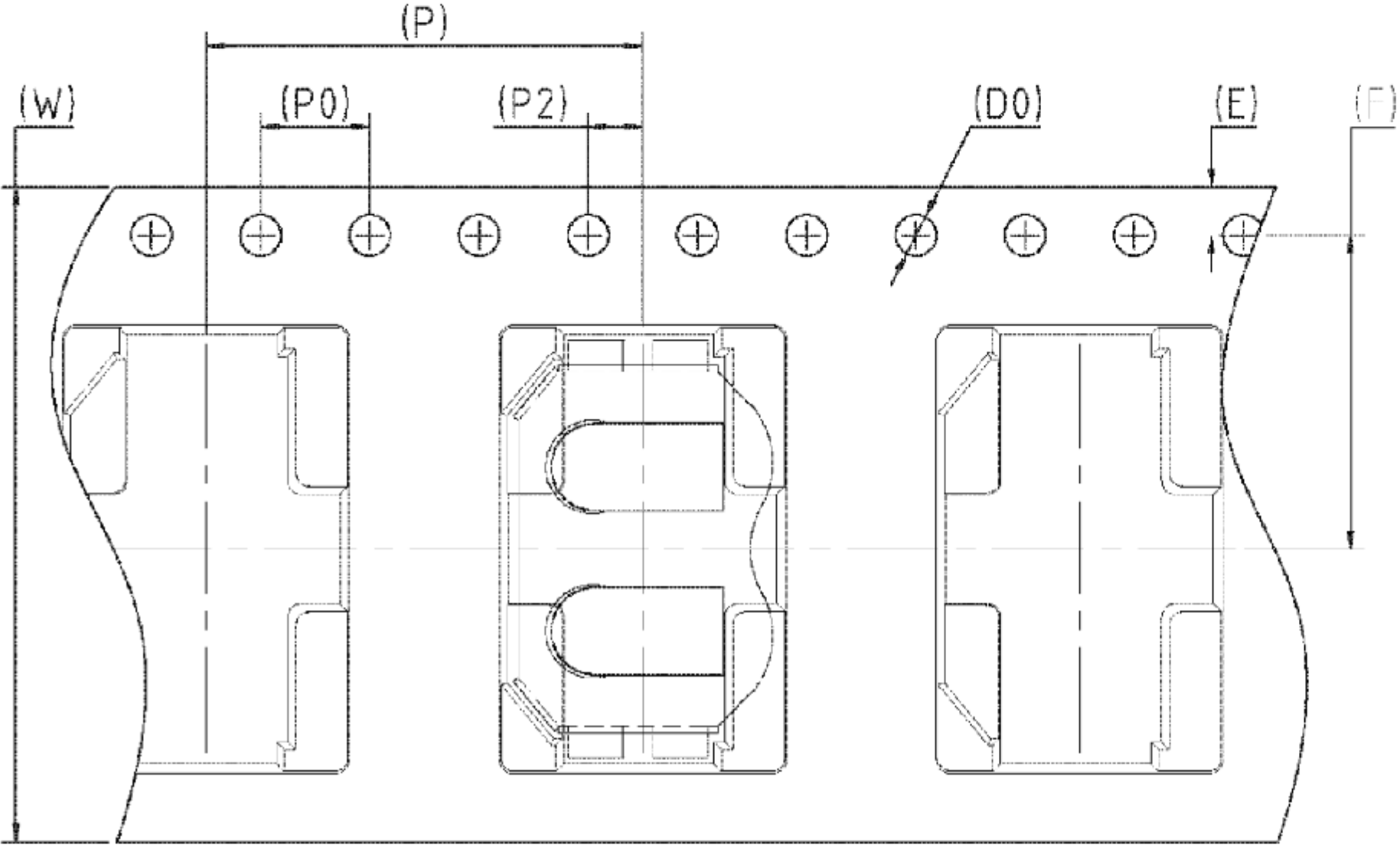


SECTION A-A

- NOTES: (UNLESS OTHERWISE SPECIFIED)
1. ALL DIMENSIONS ARE IN INCHES [mm].
 2. DIMENSIONS APPLY AFTER FINISHING.
 3. MANUFACTURE TO BE COMPLIANT WITH EU RoHS DIRECTIVE,USE MATERIALS THAT DO NOT CONTAIN REACH SUBSTANCES OF VERY HIGH CONCERN >1000ppm, AND USE DRC CONFLICT-FREE SOURCED MATERIALS.
 4. SAFETY BREAK ALL SHARP CORNERS AND EDGES .02 MAXIMUM.
 5. MINIMUM INSIDE BEND RADII 0.00 [0.0].
 6. EMBOSS LINX LOGO AS SHOWN, MINIMUM 0.002 [0.05] DEEP, PER FILE *LINX-LOGO-BLACK-ABBREVIATED.PDF*.

PART NUMBER				PACKAGING	
BAT-HLD-012-SMT				BULK	
BAT-HLD-012-SMT-TR				TAPE & REEL	
WARNING: THIS DRAWING CONTAINS PROPRIETARY INFORMATION THAT IS THE SOLE PROPERTY OF LINX TECHNOLOGIES, AND SHALL BE TREATED AS SUCH. NO DISCLOSURE OR REPRODUCTION OF THIS DOCUMENT IS PERMITTED, IN WHOLE OR IN PART, WITHOUT THE EXPRESS WRITTEN PERMISSION OF LINX TECHNOLOGIES OR ITS DESIGNATED AGENTS.				 159 ORT LANE MERLIN, OR 97532	
MATERIAL: PHOSPHOR BRONZE #C-5191		INTERPRET DIMENSIONS AND TOLERANCES PER ASME Y14.5.		TITLE: BATTERY HOLDER CR1216, CR1225, SURFACE MOUNT	
WEIGHT:		ANGLES: ±1° SURFACE: √		SIZE B	DWG. NO. C-BAT-HLD-012-SMT-pp
FINISH: NICKEL PLATE		DRAWN: S.HOGAN ENGR: S.HOGAN		DT: 8-JUN-11 DT: 23-JUL-18	REV A
		SCALE: 3:1		DO NOT SCALE DRAWING	SHEET 1 OF 2

DETAIL B
SCALE 6 : 1



- NOTES: (UNLESS OTHERWISE SPECIFIED)
1. ALL DIMENSIONS ARE IN MILLIMETERS [INCHES].
 2. 10 SPROCKET HOLE PITCH CUMULATIVE TOLERANCE $\pm 0.2\text{mm}$.
 3. MATERIAL: BLACK POLYSTYRENE.
 4. PACKING LENGTH PER 22" REEL: 51.0 m.
 5. COMPONENT LOAD PER 13" REEL: 1000.
 6. ANGLE TOLERANCE: $\pm 1^\circ$
 7. CARRIER CAMBER IS WITHIN 1 mm IN 250 mm.

W	24.00±0.30	P	16.00±0.10	A0	9.80±0.10	B0	15.70±0.10
S		P0	4.00±0.10	A1	5.50±0.10	B1	13.90±0.10
E	1.75±0.10	P2	2.00±0.10	A2		B2	
F	11.50±0.10	D0	Ø1.50 ^{+0.10} _{-0.00}	K0	4.00±0.10	K2	0.65±0.10
T	0.35±0.05	D1		K1	3.45±0.10	COLOR: BK/ANT	

SIZE	DWG. NO.	REV
B	BAT-HLD-012-SMT-TR	B
SCALE: 3:1	DO NOT SCALE DRAWING	SHEET 2 OF 2

Mouser Electronics

Authorized Distributor

Click to View Pricing, Inventory, Delivery & Lifecycle Information:

[TE Connectivity:](#)

[BAT-HLD-012-SMT-TR](#)