

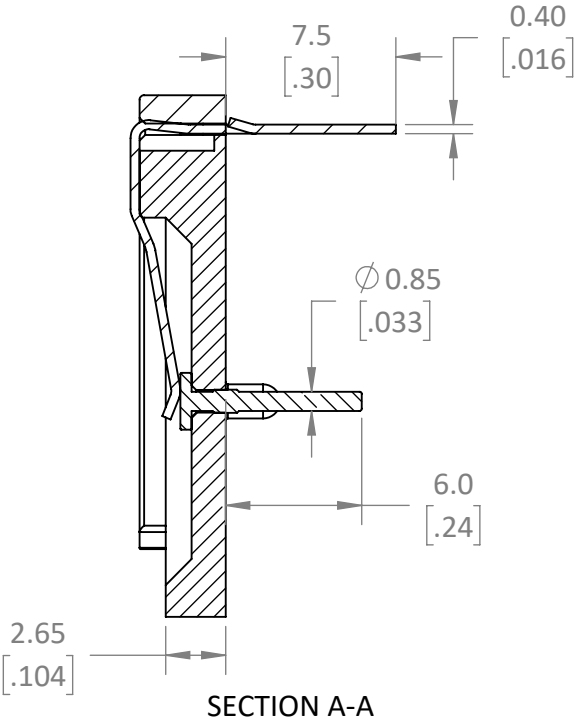
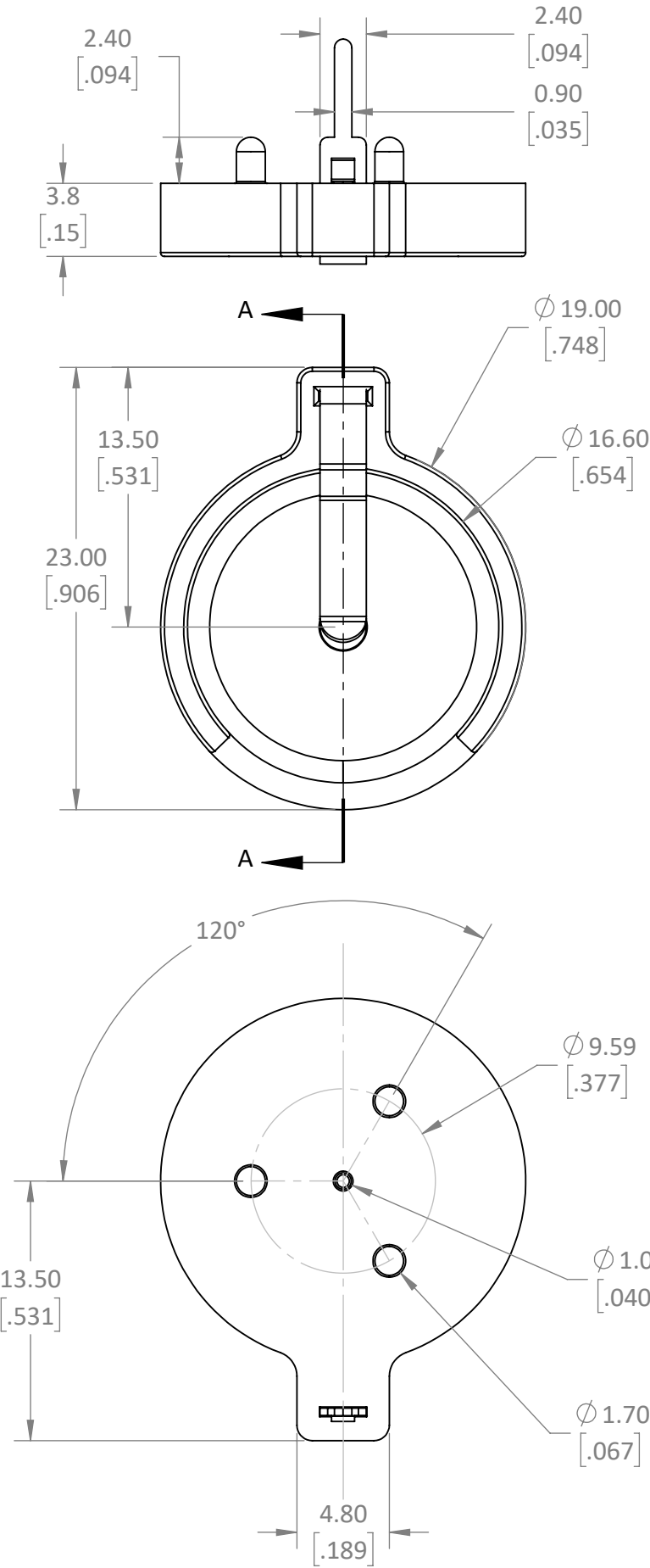
REVISIONS			
REV	DESCRIPTION	DATE	APPV
A	PRODUCTION RELEASE	JHAGER 5/27/22	DV 5/31/22

D

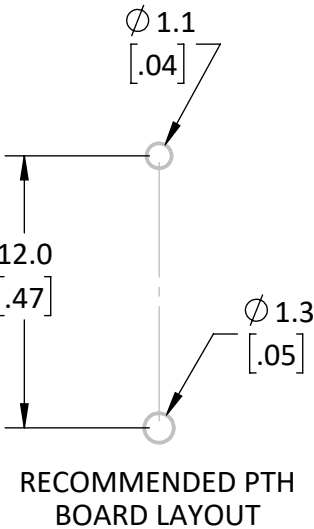
C

B

A



SECTION A-A



RECOMMENDED PTH
BOARD LAYOUT

- NOTES: (UNLESS OTHERWISE SPECIFIED)
1. ALL DIMENSIONS ARE IN MILLIMETERS [IN].
 2. DIMENSIONS APPLY AFTER FINISHING.
 3. MANUFACTURE TO BE COMPLIANT WITH EU RoHS DIRECTIVE, USE MATERIALS THAT DO NOT CONTAIN REACH SUBSTANCES OF VERY HIGH CONCERN >1000ppm, AND USE DRC CONFLICT-FREE SOURCED MATERIALS.
 4. ELECTRICAL SPECIFICATIONS ARE FOR LISTED FOR REFERENCE ONLY. SEE LINX DATA SHEET FOR CURRENT PROPERTIES
 1. CONTACT RESISTANCE: NTE 50m Ω
 2. INSULATION RESISTANCE: 100M Ω MAX
 3. DIELECTRIC RESISTANCE: 500VAC
 5. MECHANICAL PROPERTIES
 1. MATERIAL: PBT BLACK
 2. OPERATING TEMPERATURE: -25° - +85°C
 3. UNLISTED DIMENSIONS CONTROLLED BY SOLID MODEL AT LATEST REVISION.

WARNING: THIS DRAWING CONTAINS PROPRIETARY INFORMATION THAT IS THE SOLE PROPERTY OF LINX TECHNOLOGIES, AND SHALL BE TREATED AS SUCH. NO DISCLOSURE OR REPRODUCTION OF THIS DOCUMENT IS PERMITTED, IN WHOLE OR IN PART, WITHOUT THE EXPRESS WRITTEN PERMISSION OF LINX TECHNOLOGIES OR ITS DESIGNATED AGENTS.			
MATERIAL: PBT, STEEL BRASS	INTERPRET DIMENSIONS AND TOLERANCES PER ASME Y14.5.		PROJECTION:
WEIGHT:	.X ± 2.0 .XX ± 1.00 .XXX $\pm .500$	ANGLES: $\pm 1^\circ$ SURFACE:	
FINISH: BLACK, NiSn GOLD	DRAWN: JHAGER ENGR: SHAWN H	DT: 5/27/22 DT: 5/27/22	



159 ORT LANE
MERLIN, OR 97532

TITLE:
**BATTERY HOLDER THRU MOUNT PCB
CR1620**

SIZE **B** DWG. NO. C-BAT-HLD-011-THM REV **A**

SCALE: 3:1 DO NOT SCALE DRAWING SHEET 1 OF 1

Mouser Electronics

Authorized Distributor

Click to View Pricing, Inventory, Delivery & Lifecycle Information:

[TE Connectivity:](#)

[BAT-HLD-011-THM](#)