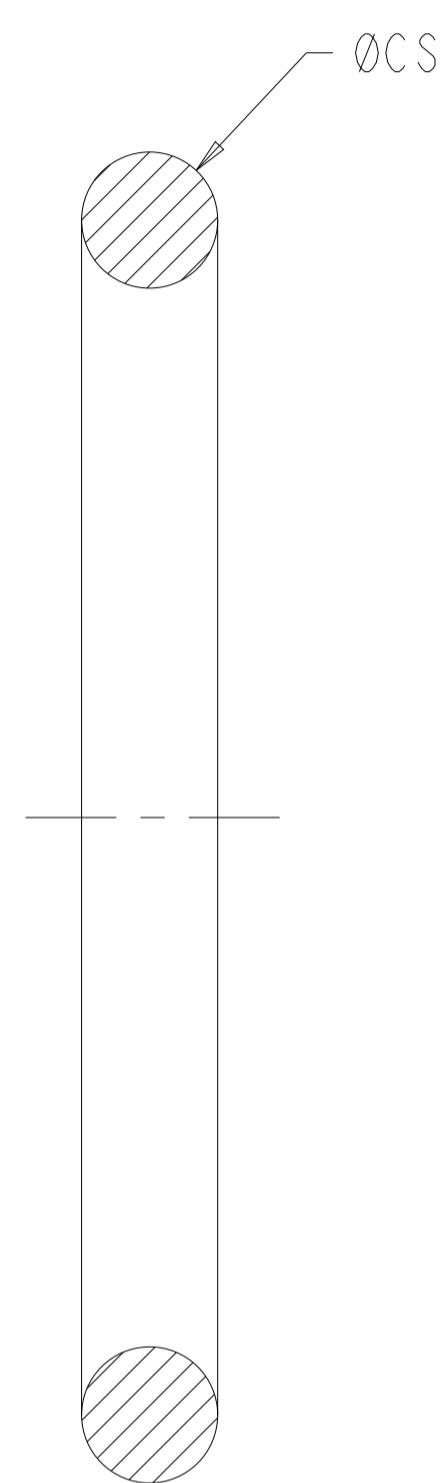
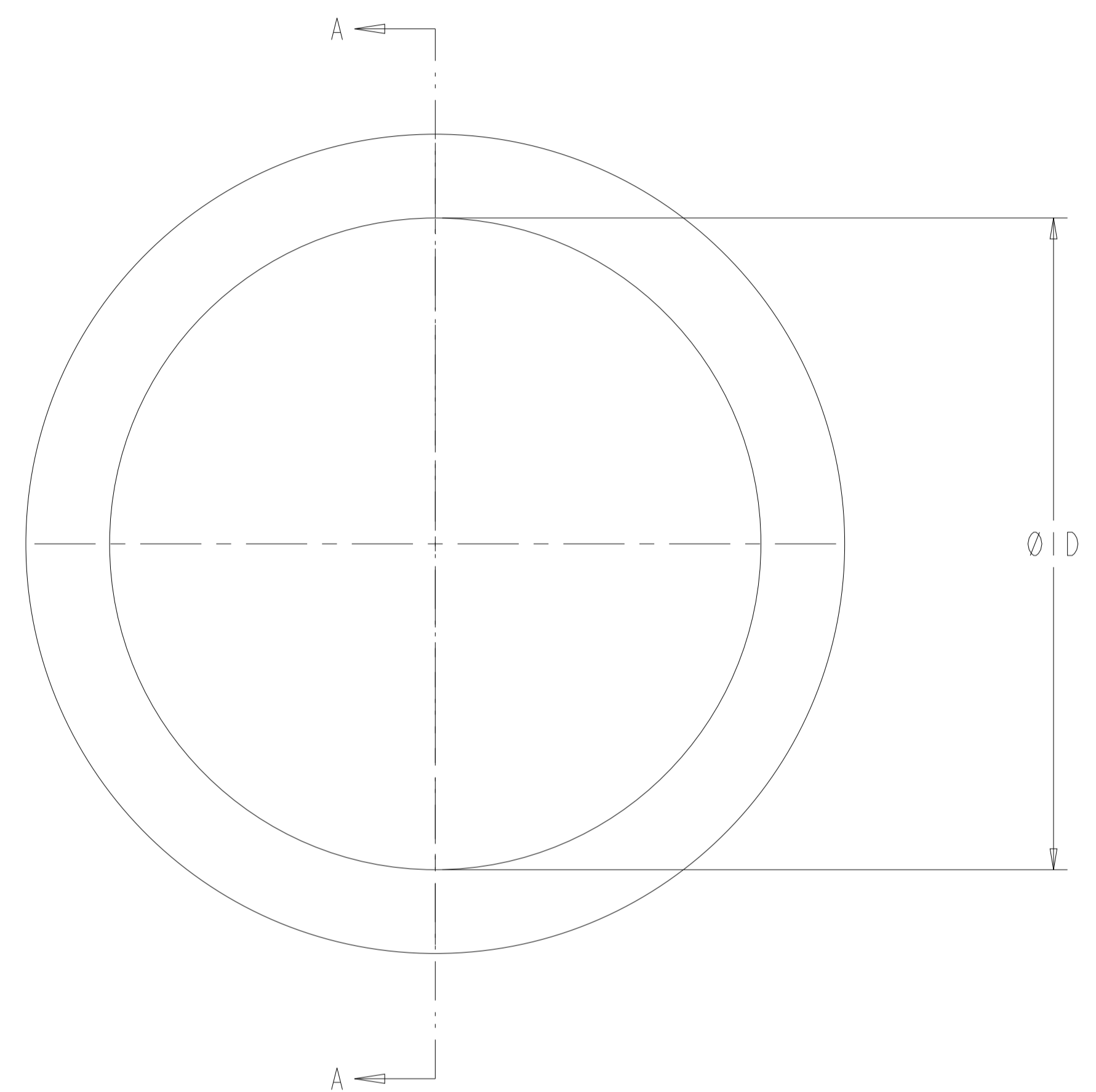


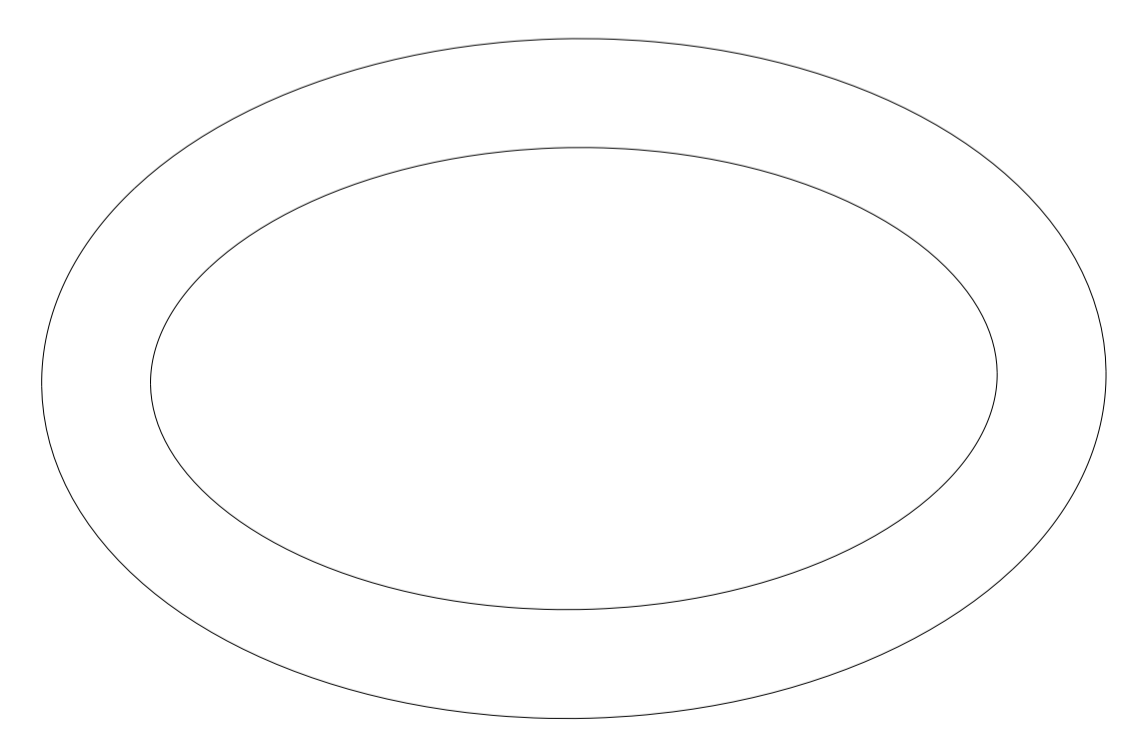
REVISIONS				
P	LTN	DESCRIPTION	DATE	APVD
A		NEW DRAWING	27MAY2024	AN JM



SECTION A-A

MATERIAL SPECIFIC DATA TABLE

TEST SPECIFICATION / MATERIAL CODE	SILICONE NICKEL ALUMINIUM (SNA)	FLUOROSILICONE NICKEL ALUMINIUM (FNA)
RECOMMENDED OPERATING TEMPERATURE RANGE (°C)	-55 to 125	-55 to 125
SPECIFIC GRAVITY ± 13%	2.000	2.300
SHORE A HARDNESS ± 7	70	70
MAXIMUM VOLUME RESISTIVITY (Ω.CM)	0.100	0.100



ISOMETRIC VIEW (NTS)

MIL-DTL-38999 MIL-DTL-26482	FNA	25	DARK GREEN	2.60±0.13	47.30±0.38	98-24022-1	2488767-1	98-24022-10	2488745-1
	FNA	23/24	DARK GREEN	2.60±0.13	44.10±0.38	98-24021-1	2488766-1	98-24021-10	2488744-1
	FNA	21/22	DARK GREEN	2.60±0.13	40.90±0.38	98-24020-1	2488765-1	98-24020-10	2488743-1
	FNA	19/20	DARK GREEN	2.60±0.13	37.80±0.25	98-24019-1	2488764-1	98-24019-10	2488742-1
	FNA	17/18	DARK GREEN	1.80±0.10	34.70±0.25	98-24018-1	2488763-1	98-24018-10	2488741-1
	FNA	15/16	DARK GREEN	1.80±0.10	31.50±0.25	98-24017-1	2488762-1	98-24017-10	2488740-1
	FNA	13/14	DARK GREEN	1.80±0.10	28.30±0.25	98-24016-1	2488761-1	98-24016-10	2488739-1
	FNA	11/12	DARK GREEN	1.80±0.10	25.10±0.25	98-24015-1	2488760-1	98-24015-10	2488738-1
	FNA	9/10	DARK GREEN	1.80±0.10	20.40±0.25	98-24014-1	2488759-1	98-24014-10	2488737-1
	FNA	8	DARK GREEN	1.80±0.10	17.20±0.25	98-24013-1	2488758-1	98-24013-10	2488736-1
	FNA	6	DARK GREEN	1.80±0.10	14.00±0.25	98-24012-1	2488757-1	98-24012-10	2488735-1
	SNA	25	DARK GREY	2.60±0.13	47.30±0.38	98-24011-1	2488756-1	98-24011-10	2488734-1
	SNA	23/24	DARK GREY	2.60±0.13	44.10±0.38	98-24010-1	2488755-1	98-24010-10	2488733-1
	SNA	21/22	DARK GREY	2.60±0.13	40.90±0.38	98-24009-1	2488754-1	98-24009-10	2488732-1
	SNA	19/20	DARK GREY	2.60±0.13	37.80±0.25	98-24008-1	2488753-1	98-24008-10	2488731-1
	SNA	17/18	DARK GREY	1.80±0.10	34.70±0.25	98-24007-1	2488752-1	98-24007-10	2488730-1
	SNA	15/16	DARK GREY	1.80±0.10	31.50±0.25	98-24006-1	2488751-1	98-24006-10	2488729-1
	SNA	13/14	DARK GREY	1.80±0.10	28.30±0.25	98-24005-1	2488750-1	98-24005-10	2488728-1
	SNA	11/12	DARK GREY	1.80±0.10	25.10±0.25	98-24004-1	2488749-1	98-24004-10	2488727-1
	SNA	9/10	DARK GREY	1.80±0.10	20.40±0.25	98-24003-1	2488748-1	98-24003-10	2488726-1
SNA	8	DARK GREY	1.80±0.10	17.20±0.25	98-24002-1	2488747-1	98-24002-10	2488725-1	
SNA	6	DARK GREY	1.80±0.10	14.00±0.25	98-24001-1	2488746-1	98-24001-10	2488724-1	
MIL SPEC.	MATERIAL	SHELL SIZE	COLOUR	ØCS	ØID	IPK QTY	IPK QTY	IPK QTY	IPK QTY
						ALIAS PART NUMBER	ALIAS PART NUMBER	ALIAS PART NUMBER	ALIAS PART NUMBER

THIS DRAWING IS A CONTROLLED DOCUMENT. DWN 27MAY2024
CHK AYESHABANU N
27MAY2024
APVD BASAVARAJA D A
27MAY2024

DIMENSIONS: mm

TOLERANCES UNLESS OTHERWISE SPECIFIED:

0 PLC	±
1 PLC	±0.1
2 PLC	±0.05
3 PLC	±0.02
4 PLC	±0.01
5 PLC	±0.005
6 PLC	±0.002
ANGLES	±0.0001
FINISH	±

MATERIAL: SEE TABLE

TE Connectivity

98-NA-SERIES-JAM-NUT-SEALS

108-120068

114-120007

00779

SCALE 10:1

SHEET 1 OF 1

REV A

Mouser Electronics

Authorized Distributor

Click to View Pricing, Inventory, Delivery & Lifecycle Information:

[TE Connectivity:](#)

[98-24018-10](#) [98-24016-10](#) [98-24020-10](#) [98-24021-10](#) [98-24013-10](#) [98-24022-10](#) [98-24019-10](#) [98-24014-10](#) [98-24015-10](#) [98-24017-10](#)