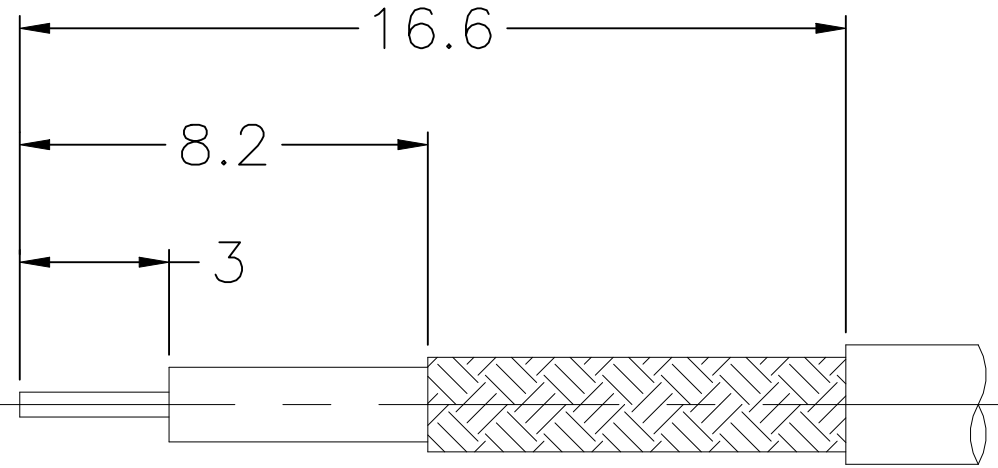
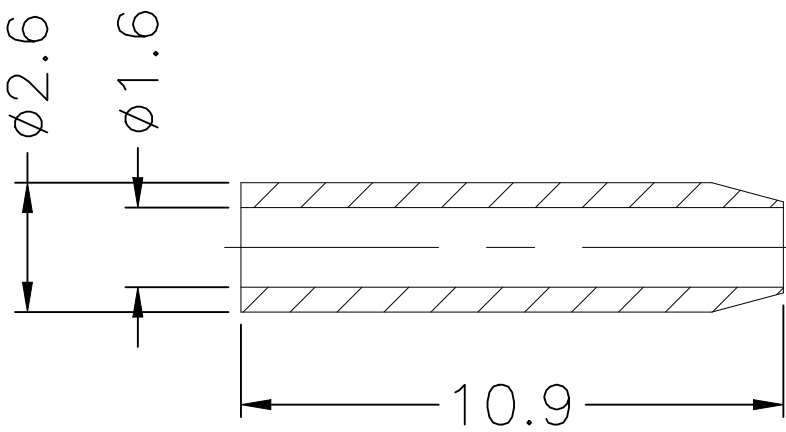
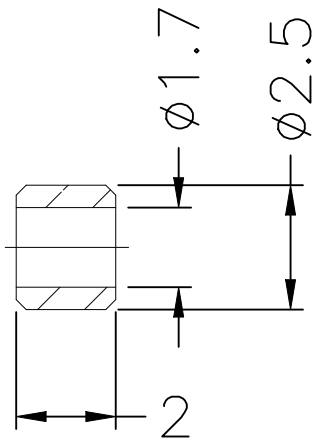
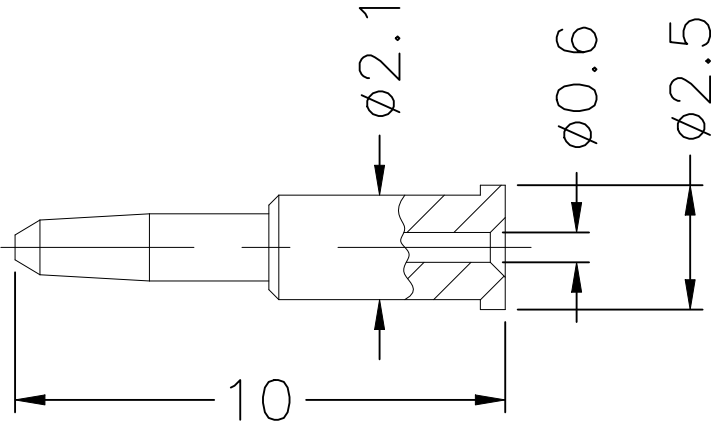
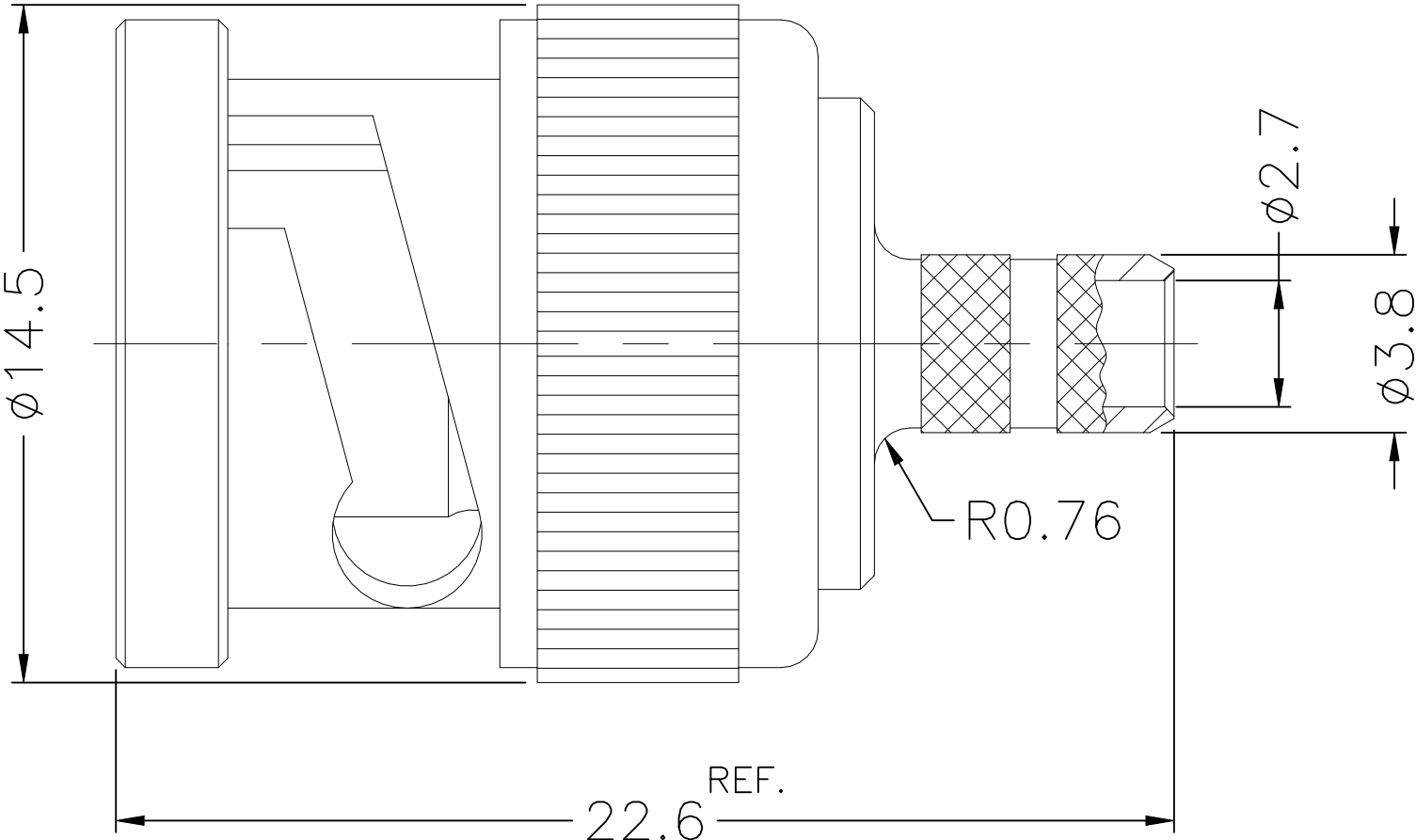
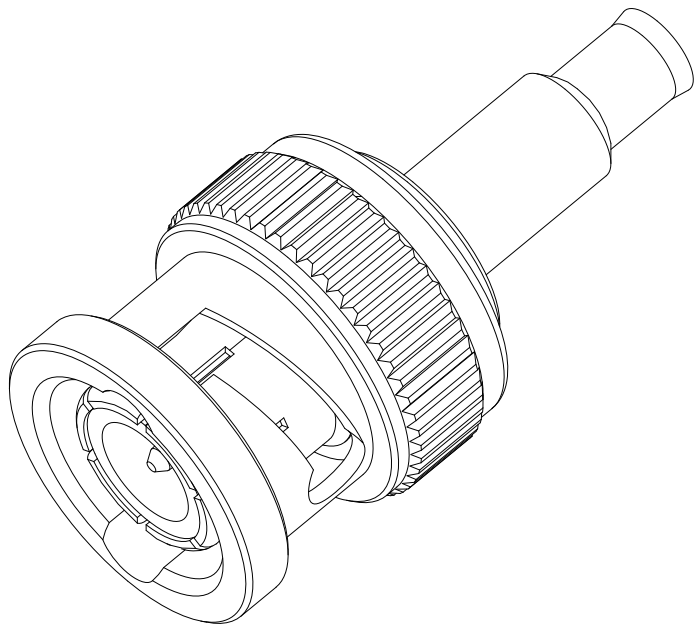


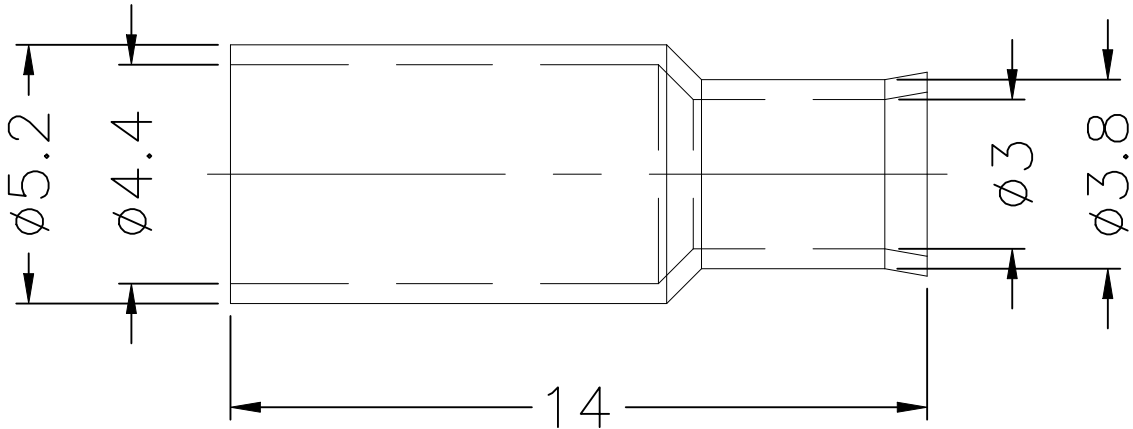
REVISIONS					
P	LTR	DESCRIPTION	DATE	DWN	APVD
	A	ECN-24-274897 : GTP	11JUL2024	SS	WH



RECOMMENDED
CABLE STRIPPING DIM'S



1. CRIMPED FERRULE
HEX CRIMP SIZE .178”
2. CRIMPED CONTACT PIN
HEX CRIMP SIZE .068”



- NOTES: FINISH (PLATING THICKNESS IN MICRO-INCHES)
1. BRASS
 2. NICKEL PL. 100 MIN. THICK OVER COPPER PL. 50 MIN. THICK
 3. GOLD PL. 3 MIN. THICK OVER NICKEL PL. 50 MIN. THICK OVER COPPER PL. 50 MIN. THICK
 4. POM
 5. ZINC DIECAST

- SPECIFICATIONS:
1. IMPEDANCE: 50Ω
 2. FREQUENCY: DC to 4GHz
 3. VSWR/RL: 1.25 max./ 1.91 dB min.
 4. CONTACT RESISTANCE:
CENTER: 3 milliohms max.
OUTER: 2 milliohms max.
 6. TEMPERATURE RANGE: -40°C TO +85°C
 7. DURABILITY: 500 cycles min.
 8. ENGAGEMENT AND DISENGAGEMENT FORCE:
ENGAGEMENT: 2.5 in-lbs max.
DISENGAGEMENT: 3 lbs max.
 9. CABLE RETENTION FORCE(Cable assembly): 10 lbs min. or break
 10. ROHS & REACH COMPLIANT

- UNLESS OTHERWISE SPECIFIED
TOLERANCES
- | | |
|-----------|--------|
| 0.5-6 | = ±0.2 |
| 6-30 | = ±0.4 |
| 30-120 | = ±0.6 |
| 120-315 | = ±1 |
| 315-1000 | = ±1.6 |
| 1000-2000 | = ±2.4 |

1	NOTE 2	NOTE 1	FERRULE	10
1	NATURAL	NOTE 4	SLEEVE	9
1	NOTE 3	NOTE 1	CONTACT PIN	8
1	NOTE 2	NOTE 1	WASHER	7
1	NOTE 2	SK5	SPRING	6
1	NOTE 2	NOTE 1	RETAINER RING	5
1	RED	SILICONE	GASKET	4
1	NATURAL	NOTE 4	INSULATOR	3
1	NOTE 2	NOTE 1	BODY	2
1	NOTE 2	NOTE 5	SHELL	1
2484792-1	FINSIH	MATERIAL	DESCRIPTION	ITEM

THIS DRAWING IS A CONTROLLED DOCUMENT.		DWN SIDDHARTH SINGH CHK ERIC DAI APVD WENKE HE PRODUCT SPEC 108-161329 APPLICATION SPEC — WEIGHT — CUSTOMER DRAWING	01APR2024 01APR2024 01APR2024	TE Connectivity		NAME BNC PLUG STR RG174 188A 316 4 GHz 50 Ohm		SIZE A2		CAGE CODE 00779		DRAWING NO C=2484792		RESTRICTED TO —	
DIMENSIONS: mm		TOLERANCES, UNLESS OTHERWISE SPECIFIED:		SCALE 1:1		SHEET 1 of 1		REV A							
MATERIAL —		FINISH —													

Mouser Electronics

Authorized Distributor

Click to View Pricing, Inventory, Delivery & Lifecycle Information:

[TE Connectivity:](#)

[2484792-1](#)