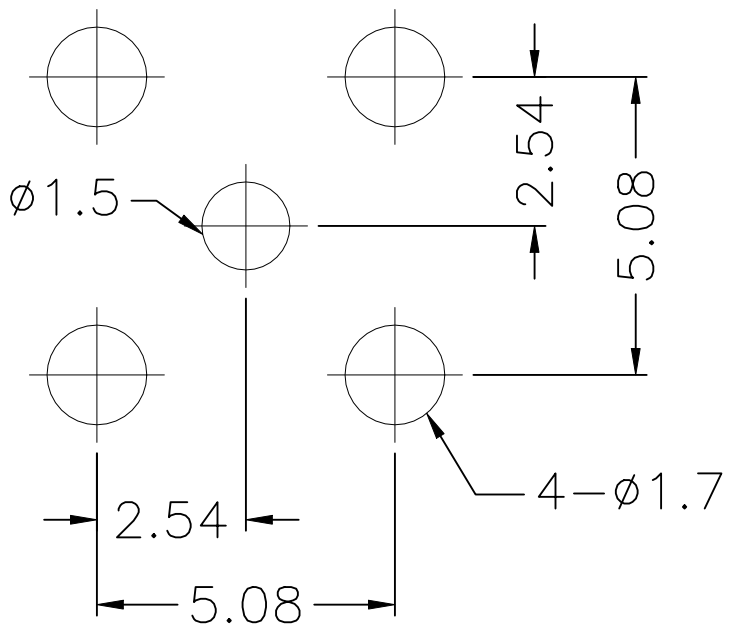
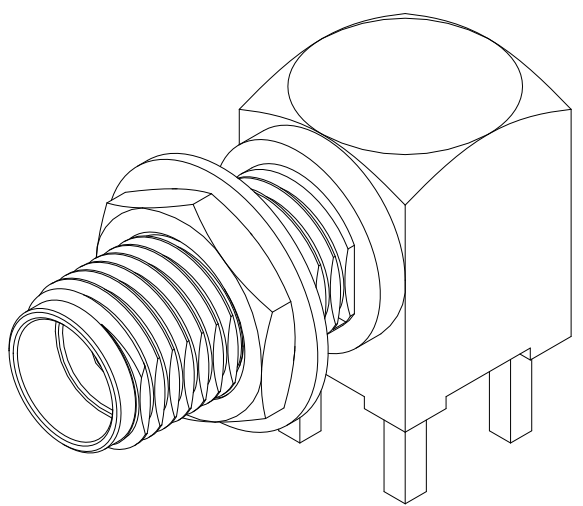
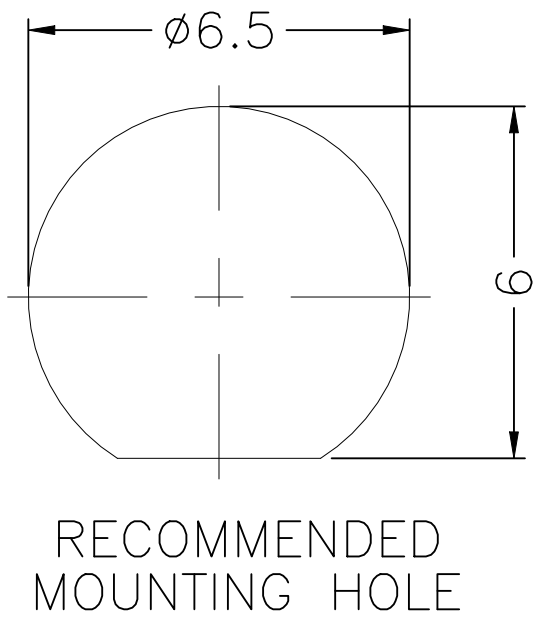
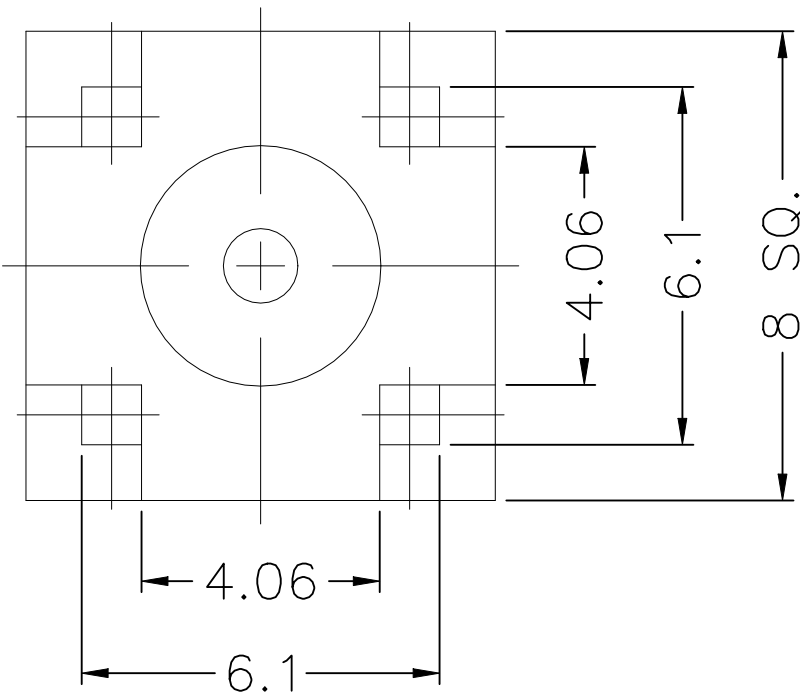
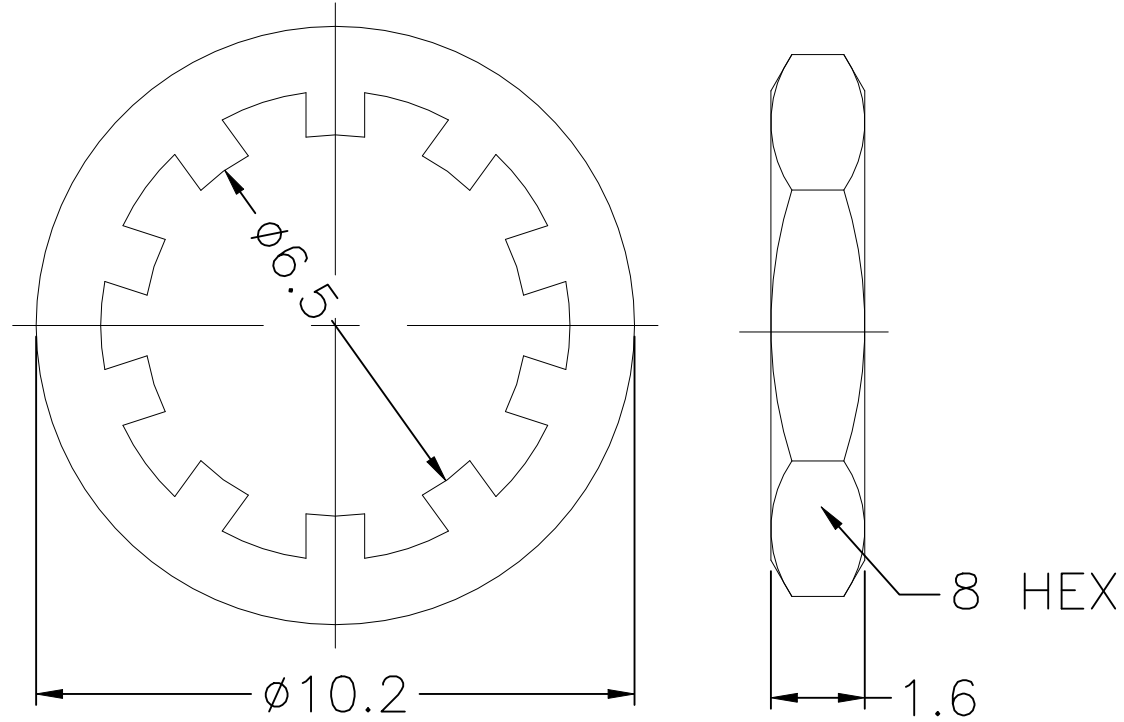
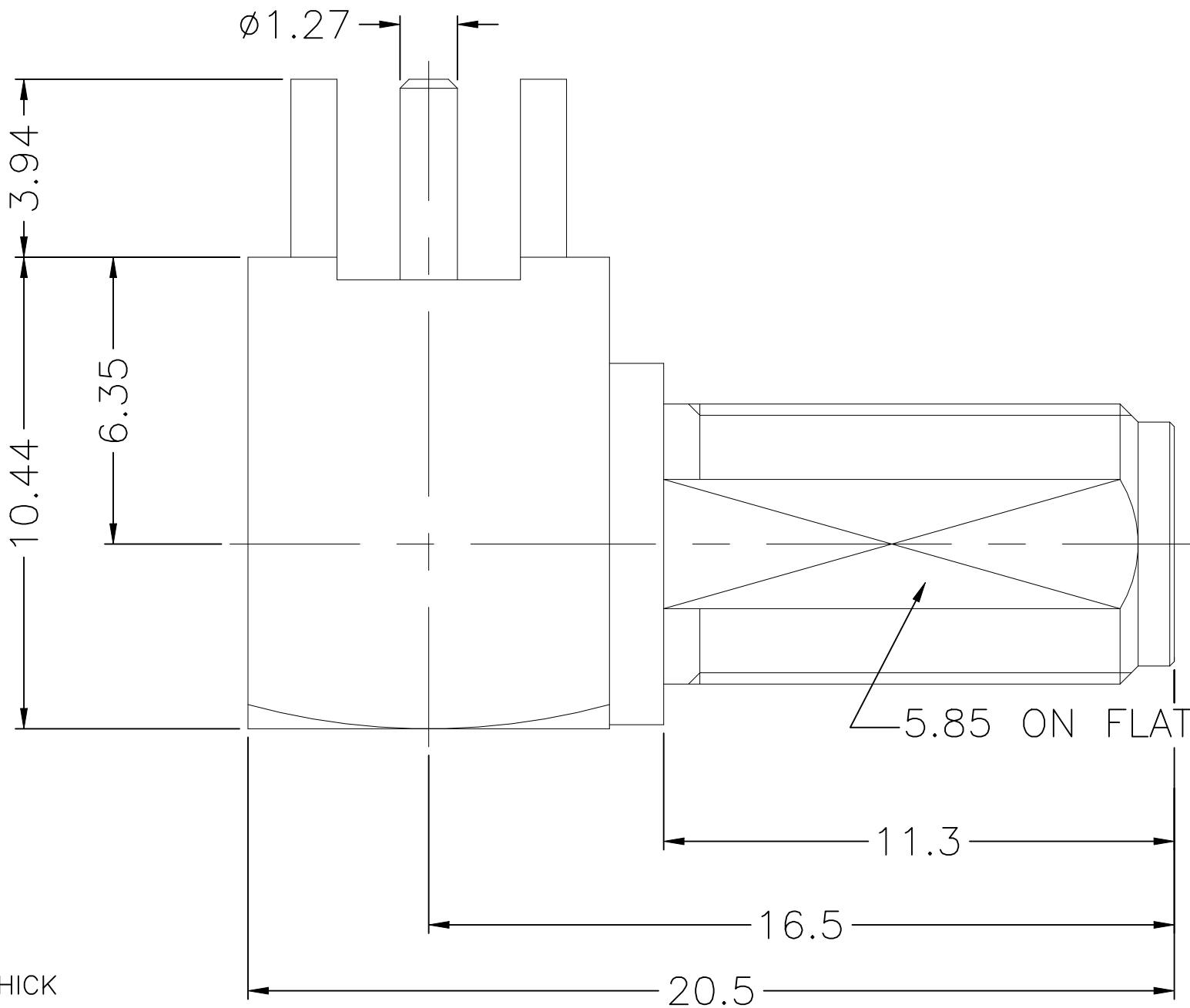


REVISIONS					
P	LTR	DESCRIPTION	DATE	DWN	APVD
	A	ECN-24-274897 : GTP	11JUL2024	SS	WH



PCB MOUNTING HOLE



1. MAX. PANEL THICKNESS=3.1mm

NOTES: FINISH (PLATING THICKNESS IN MICRO-INCHES)


1. BRASS
2. BERYLLIUM COPPER
3. GOLD PL. 3 MIN. THICK OVER NICKEL PL. 50 MIN. THICK OVER COPPER PL. 50 MIN. THICK
4. PTFE

SPECIFICATIONS:

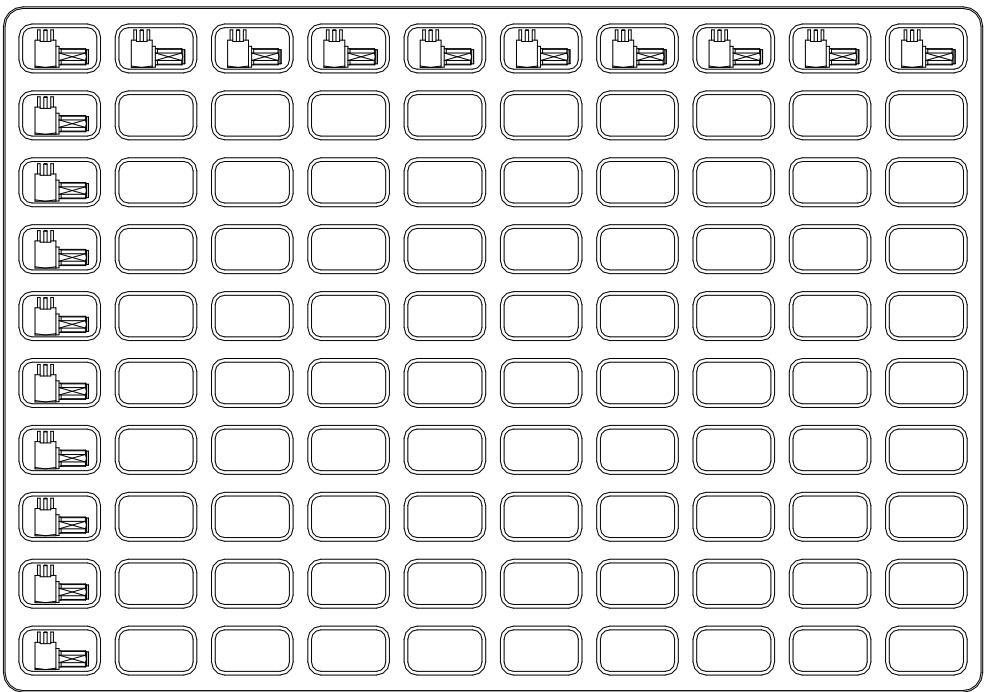
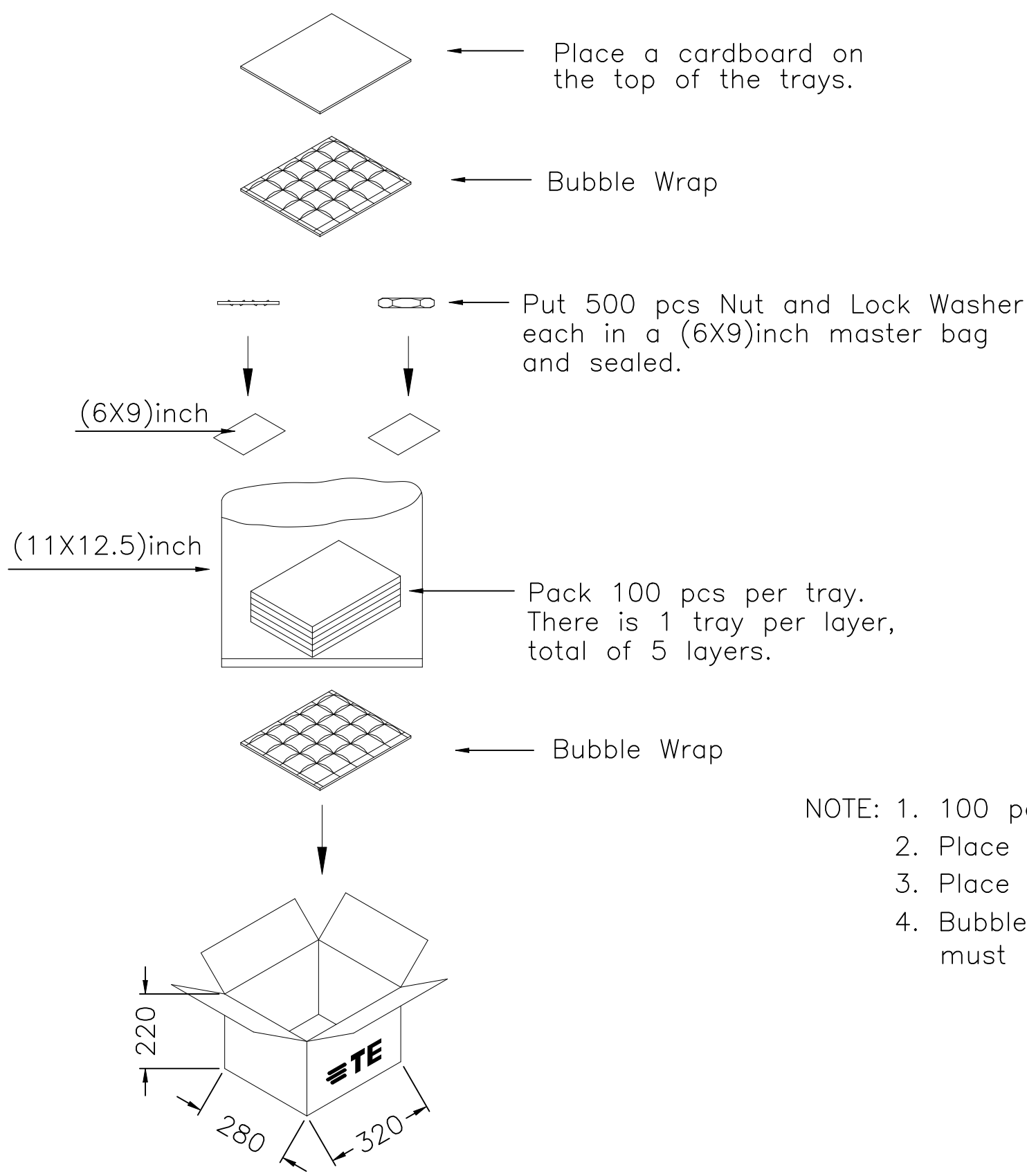
1. IMPEDANCE: 50Ω
2. FREQUENCY: DC to 18GHz
3. VSWR/RL: 1.3 max./ 17.69 dB min.
4. CONTACT RESISTANCE:
CENTER: 3 milliohms max.
OUTER: 2 milliohms max.
5. TEMPERATURE RANGE: -65°C TO +165°C
6. DURABILITY: 500 cycles min.
7. ENGAGEMENT AND DISENGAGEMENT FORCE:
ENGAGEMENT: 2 in-lbs max.
DISENGAGEMENT: 2 in-lbs max.
8. ROHS & REACH COMPLIANT
9. PACKAGING QUANTITY:
100 pcs / Tray, 5 tray = 500 pcs

UNLESS OTHERWISE SPECIFIED
TOLERANCES

0.5-6	= ±0.2
6-30	= ±0.4
30-120	= ±0.6
120-315	= ±1
315-1000	= ±1.6
1000-2000	= ±2.4

THIS DRAWING IS A CONTROLLED DOCUMENT.		DWN SIDDHARTH SINGH 27MAR2024	 TE Connectivity			
		CHK ERIC DAI 27MAR2024				
		APVD WENKE HE 27MAR2024	NAME SMA JACK RA PCB THRU HOLE BHD 18 GHz			
		PRODUCT SPEC 108-161323				
		APPLICATION SPEC				
		WEIGHT	SIZE A2	CAGE CODE 00779	DRAWING NO C=2484787	RESTRICTED TO -
		CUSTOMER DRAWING	SCALE 1:1			
			SHEET 1 of 2			
			REV A			

REVISIONS					
P	LTR	DESCRIPTION	DATE	DWN	APVD
-	-	SEE SHEET 1	-	-	-



- NOTE: 1. 100 pcs / Tray, 5 tray = 500 pcs
2. Place 500 pcs Nut and Lock Washer each into 6X9” bag
3. Place 5 trays into 11X12.5” bag
4. Bubble warp must be placed in the box, cover cardboard must placed on the top before sealing the box

DIMENSIONS ARE IN MILLIMETERS
UNLESS OTHERWISE SPECIFIED
TOLERANCES
0.5-6 = ±0.2
6-30 = ±0.4
30-120 = ±0.6
120-315 = ±1
315-1000 = ±1.6
1000-2000 = ±2.4

THIS DRAWING IS A CONTROLLED DOCUMENT.		DWN SIDDHARTH SINGH 27MAR2024	TE Connectivity			
		CHK ERIC DAI 27MAR2024				
		APVD WENKE HE 27MAR2024	NAME SMA JACK RA PCB THRU HOLE BHD 18 GHz			
		PRODUCT SPEC 108-161323				
		APPLICATION SPEC				
		WEIGHT	SIZE A2	CAGE CODE 00779	DRAWING NO C=2484787	RESTRICTED TO -
		CUSTOMER DRAWING	SCALE 1:1	SHEET 2 OF 2	REV A	

Mouser Electronics

Authorized Distributor

Click to View Pricing, Inventory, Delivery & Lifecycle Information:

[TE Connectivity:](#)

[2484787-1](#)