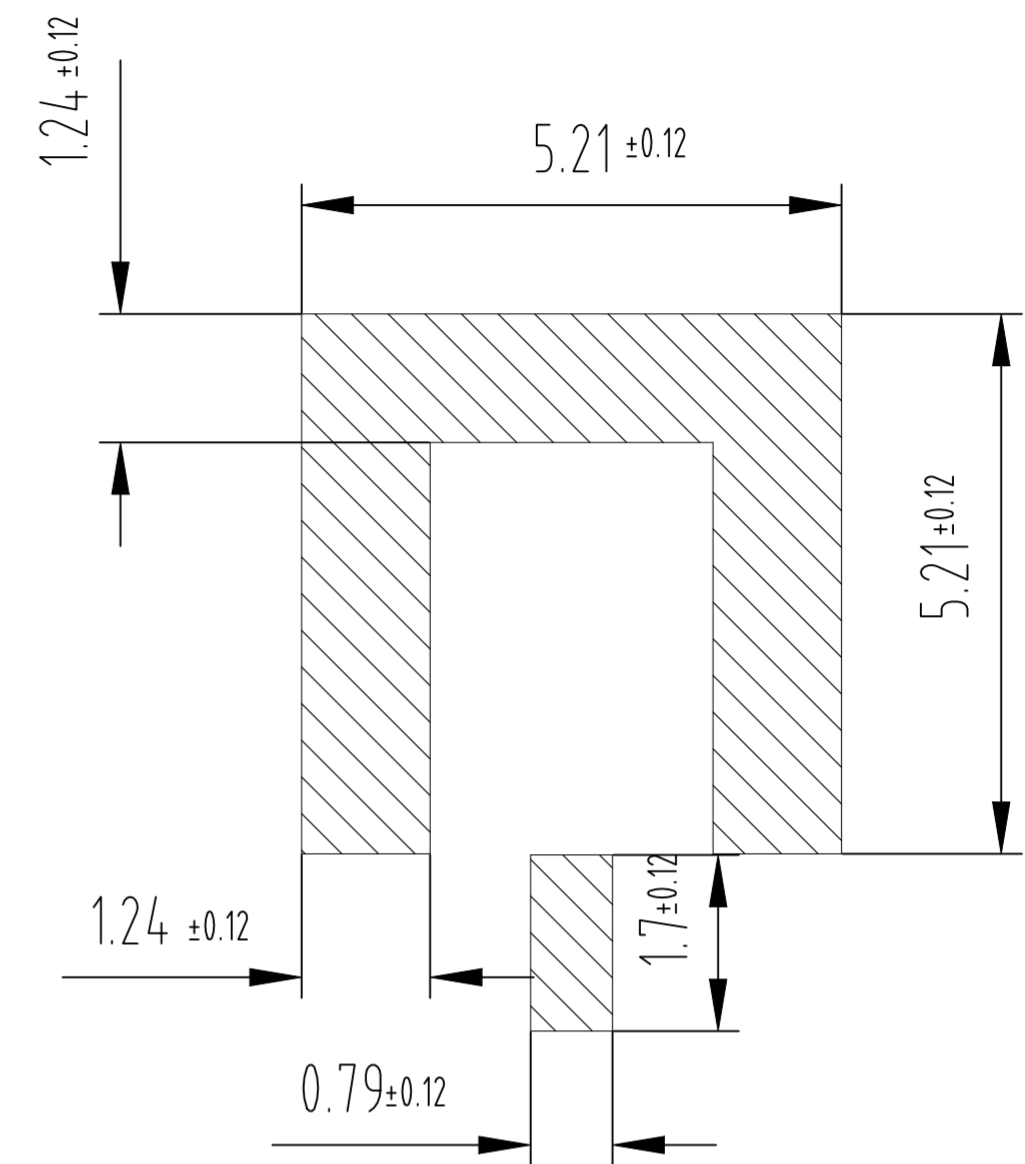


1	NA	LCP	INSULATOR	3
1	GOLD 3u" PL/NICKEL/COPPER	Be-Cu C17300	CONTACT PIN	2
1	GOLD 3u" PL/NICKEL/COPPER	Be-Cu C17300	BODY	1
2484640-1	FINSIH	MATERIAL	DESCRIPTION	ITEM

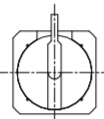


1. IMPEDANCE: 50Ω
2. FREQUENCY: DC to 18GHz
3. VSWR: 1.3 max.
4. CONTACT RESISTANCE:
CENTER: <6 milliohms max.
OUTER: <2 milliohms max.
5. TEMPERATURE RANGE: -40°C TO +125°C
6. DURABILITY: 500 cycles min.(LIMITED DETENT)
7. MECHANICAL CHARACTERISTICS
CENTER CONTACT RETENTION: 1.5lbs MIN
8. VOLTAGE RATING: 175 V(rms)
9. INSULATION RESISTANCE > :5000 milliohms
10. DIELECTRIC WITHSTANDING VOLTAGE> :500 V
11. ROHS & REACH COMPLIANT

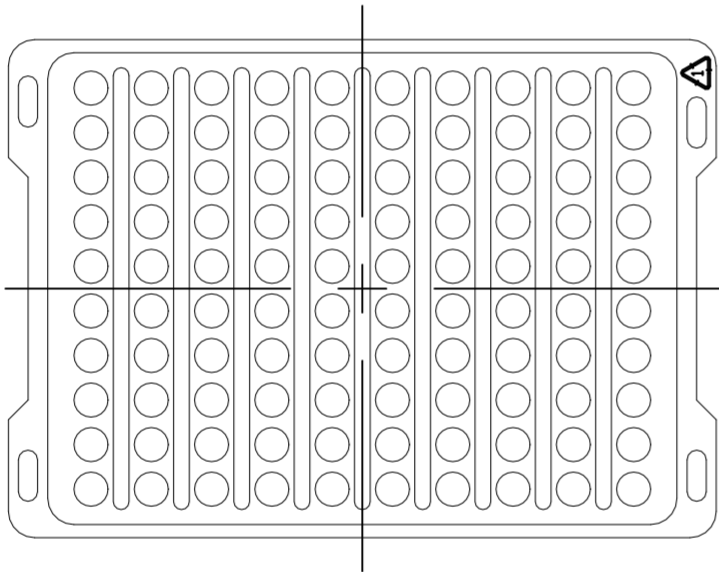
1471-9 (1/15)

REVISIONS					
P	LTR	DESCRIPTION	DATE	DWN	APVD
	-	SEE SHEET 1	-	-	-

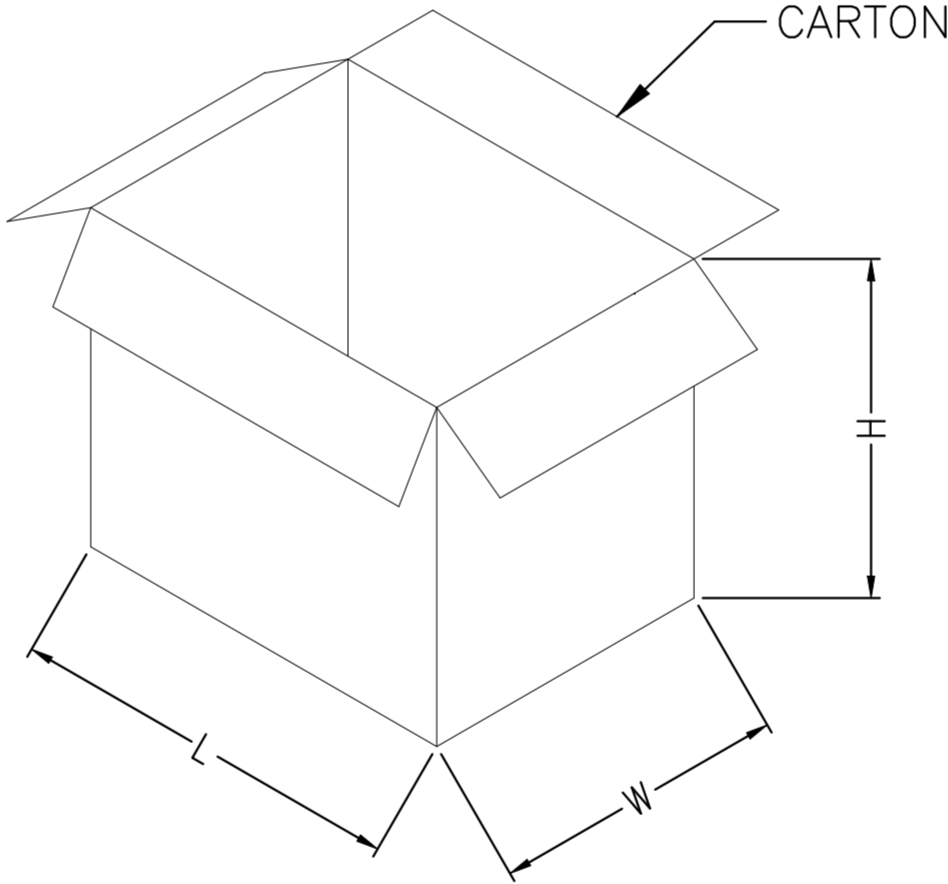
- NOTES :
- 1. DIMENSION:
CARTON: L=200, W=280, H=180
 - 2. QUANTITY:
 - 2.1 PRIMARY PACKING: 100 PCS/TRAY(100PCS)
 - 2.2 OUTER PACKING: 10 TRAY/CARTON(1000PCS)





↓ 100 PCS



10 TRAY
➡



THIS DRAWING IS A CONTROLLED DOCUMENT.		DWN SIDDHARTH SINGH CHK ERIC DAI APVD WENKE HE PRODUCT SPEC APPLICATION SPEC — WEIGHT —		03APR2024 03APR2024 03APR2024		 TE Connectivity	
DIMENSIONS: mm		TOLERANCES, UNLESS OTHERWISE SPECIFIED:		NAME SMP M LIMITED DETENT SMD 18 GHz 50 Ohm			
		0 PLC ± — 1 PLC ± 0.3 2 PLC ± 0.2 3 PLC ± 0.1 4 PLC ± — ANGLES ± 5		— — —			
MATERIAL —		FINISH —		SIZE A2		CAGE CODE 00779	
				DRAWING NO C=2484640		RESTRICTED TO —	
CUSTOMER DRAWING				SCALE 1:1		SHEET 2 of 2	
						REV A	

Mouser Electronics

Authorized Distributor

Click to View Pricing, Inventory, Delivery & Lifecycle Information:

[TE Connectivity:](#)

[2484640-1](#)