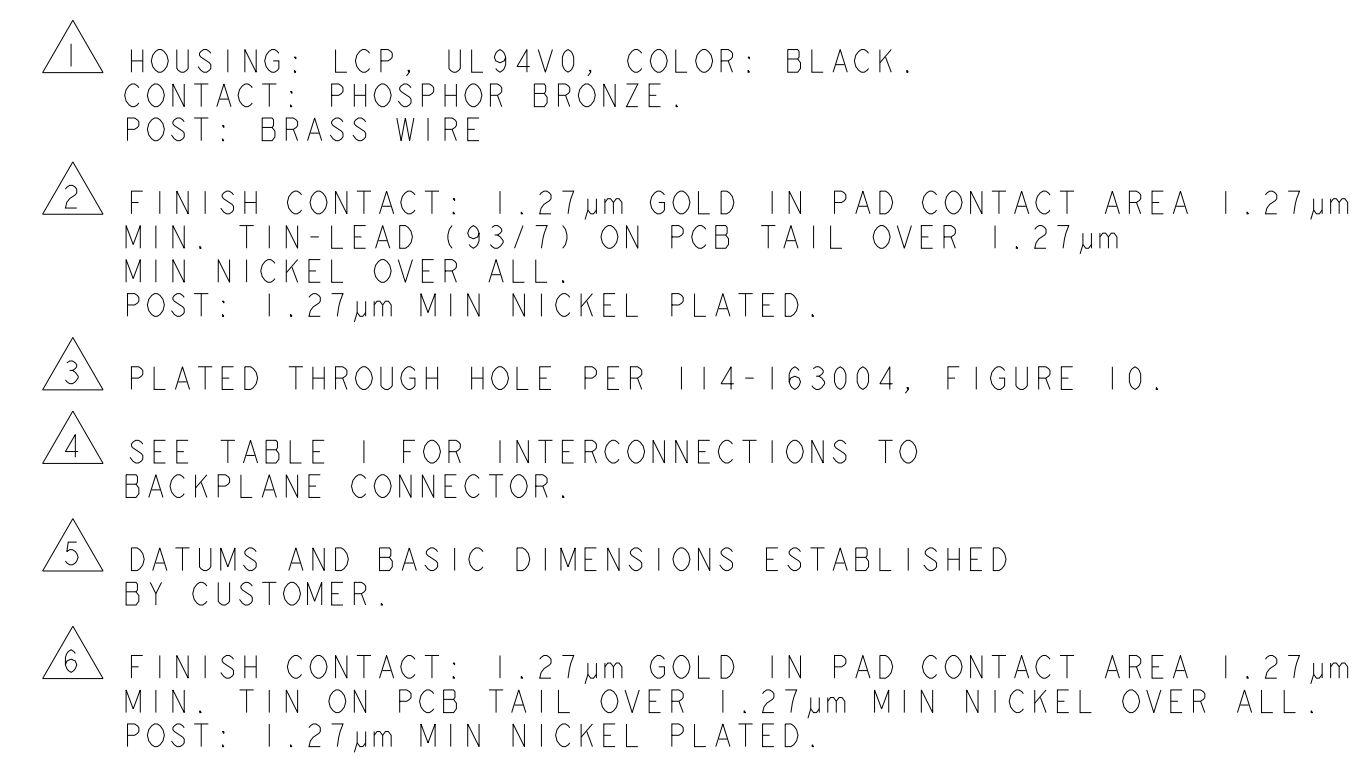




TYPICAL INTERCONNECTIONS FOR EACH COLUMN (WAFER): 1,2,3		
CONTACT USAGE	DAUGHTERCARD CONNECTOR PIN	BACKPLANE CONNECTOR PIN
POWER	a x, b x, c x	a x, b x, c x, d x
POWER	e x, f x, g x	f x, g x, h x, i x
NOT CONNECTED	d x	e x

 TE Connectivity


SCALE	6:1	SHEET	OF	REV
-------	-----	-------	----	-----



S = SOLDER TAIL
C = COMPLIANT PIN
G = GUIDE PIN

THIS DOCUMENT CONTAINS CONTROLLED TECHNICAL DATA SUBJECT TO THE EXPORT ADMINISTRATION REGULATIONS (EAR). VIOLATIONS OF THESE EXPORT LAWS AND REGULATIONS ARE SUBJECT TO CIVIL AND CRIMINAL PENALTIES.

THIS DRAWING IS A CONTROLLED DOCUMENT.		DWN	07MAR2022
DIMENSIONS: mm		CWR D. HOANG 07MAR2022	
		APVD D. HOANG	
		PRODUCT SPEC	
		108-2072-3	
		APPLICATION SPEC	
		114-163004	
MATERIAL		WEIGHT	5.41g
SEE TABLE		CUSTOMER DRAWING	

		TE Connectivity	
NAME RIGHT-ANGLE PLUG ASSY, 7 ROW HALF LEFT END, 20.3mm, MULTIGIG RT 3 D-CARD CONNECTOR, SOLDER TAIL			
SIZE		DRAWING NO	
A 00779		C=2407864	
		RESTRICTED TO	
		-	
SCALE		SHEET	
6:1		OF	
		REV	

Mouser Electronics

Authorized Distributor

Click to View Pricing, Inventory, Delivery & Lifecycle Information:

[TE Connectivity:](#)

[2407864-1](#)