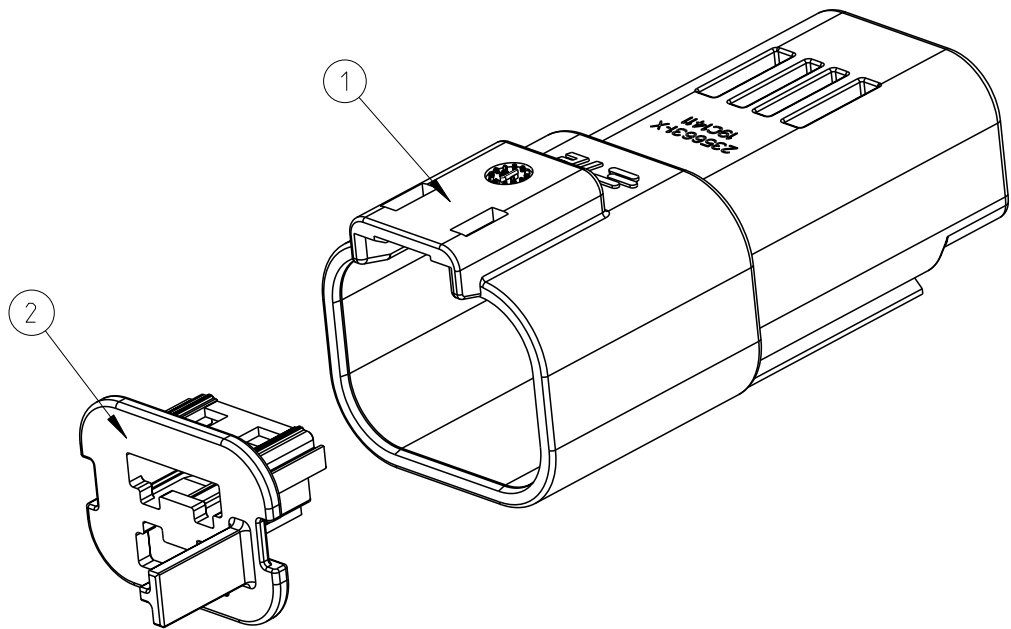
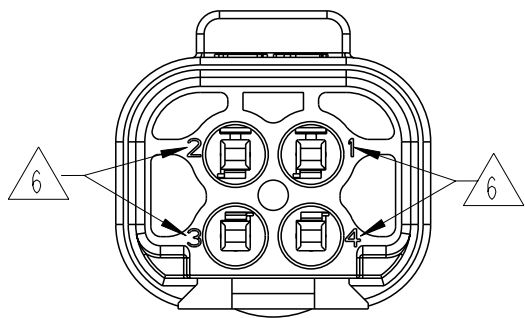
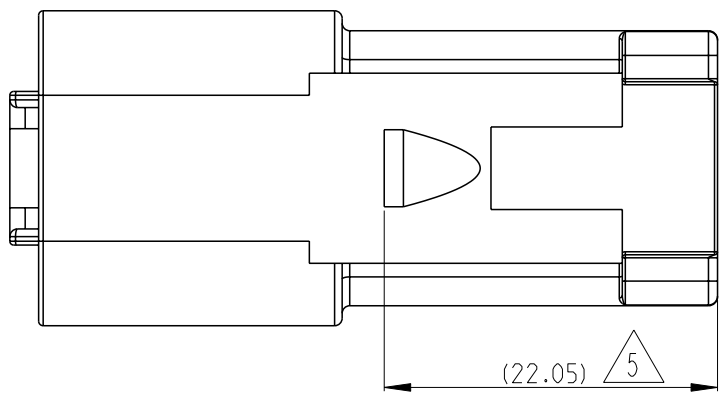
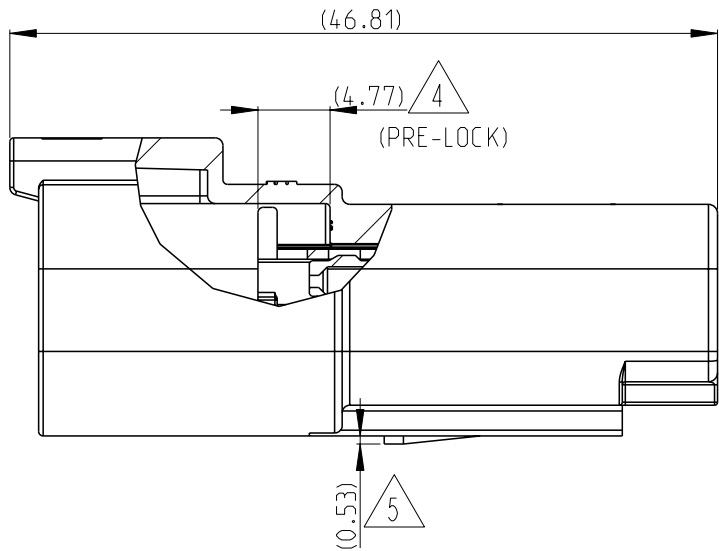
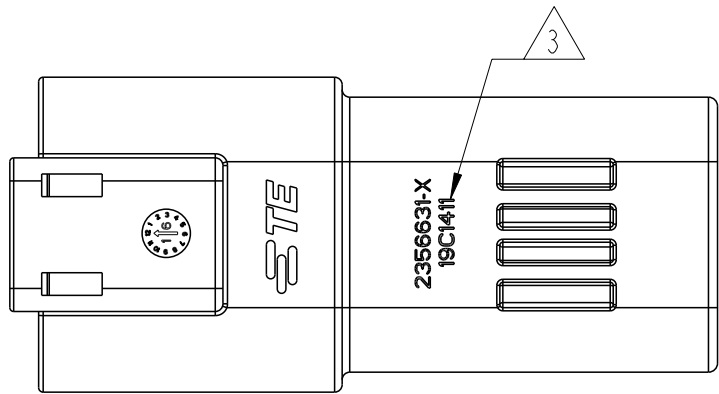
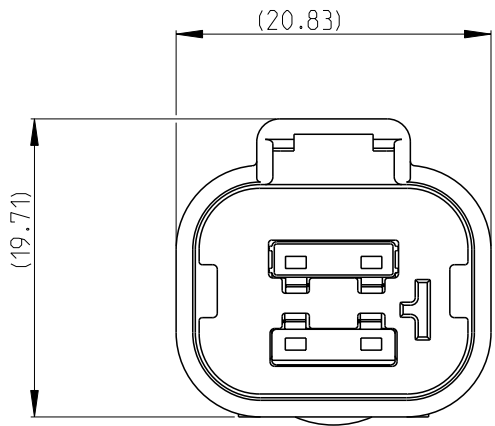
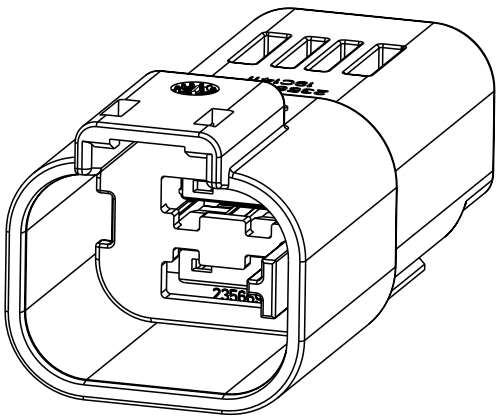


REVISIONS					
P	LTR	DESCRIPTION	DATE	DWN	APVD
	A	INITIAL RELEASE	18SEP2019	V.T	I.Y
	B	ECR-20-004362	30MAR2020	V.T	E.J
	C	ECR-20-015258	01JUN2021	V.T	Z.Z



NOTES:

1.RECEPTACLE 2356631-X MATES WITH 2356607-X PLUG (X=1, 2, 3, 4 FOR RELEVANT CODE).
RECEPTACLE 2-2356631-X MATES WITH 2-2356607-X PLUG (X=1, 2, 3, 4 FOR RELEVANT CODE).

2.MATERIAL: HOUSING: PBT GF30, SEE TABLE FOR COLOR
TPA: PBT GF30, SEE TABLE FOR COLOR

3. DATE CODE: IDENTIFIES THE YEAR, MONTH, DAY AND HOUR OF ASSEMBLY.
YEAR: FIRST AND SECOND DIGITS(19=2019)
MONTH: THIRD DIGIT , EXCLUDING 1 , A=JAN, B=FEB, C=MARCH...(K=OCTOBER)
DAY: FOURTH AND FIFTH DIGITS(14=14th DAY)
HOUR: SIXTH AND SEVENTH DIGITS(11=11AM)

4. PULL TPA TO PRE-LOCK BEFORE TERMINAL INSERTION IN CASE OF TPA BEING HIT TO END-LOCK POSITION.

5. REFER TO DRAWING DT04-DOVETAIL FOR CLIP INTERFACE DIMENSIONS, RECOMMEND MOUNTING CLIP PN LIST:.
PLASTIC VERSION PN:2355806-1.

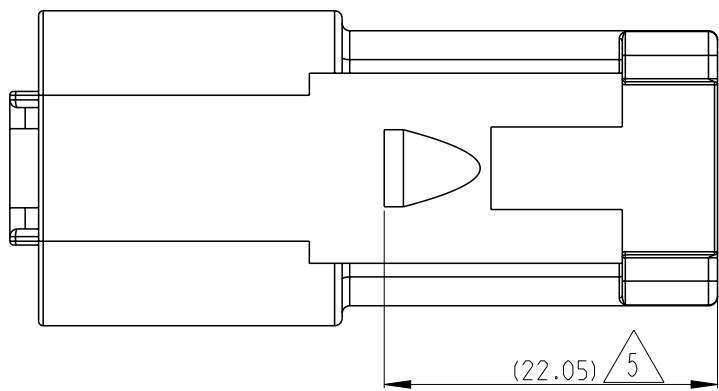
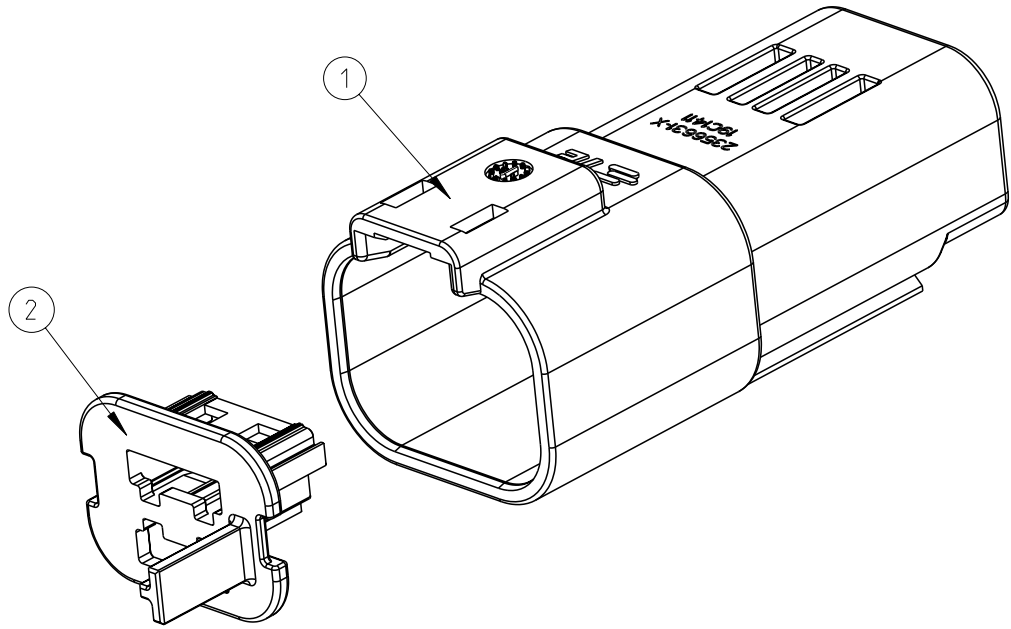
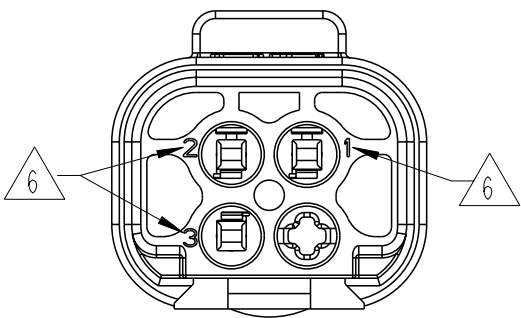
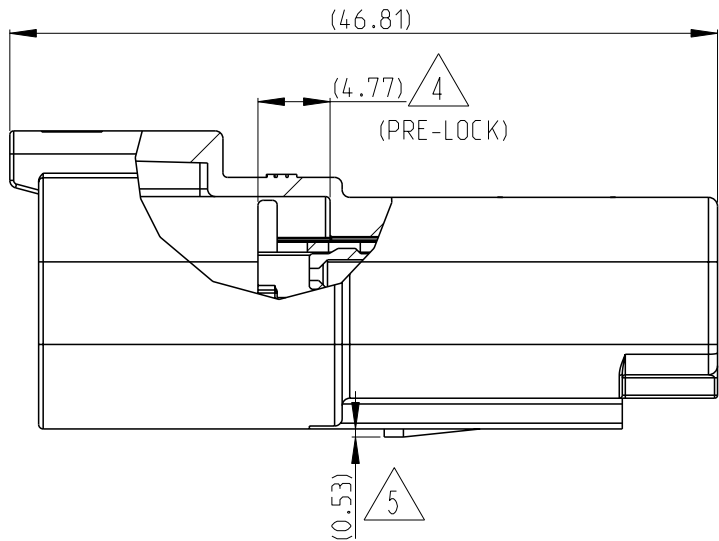
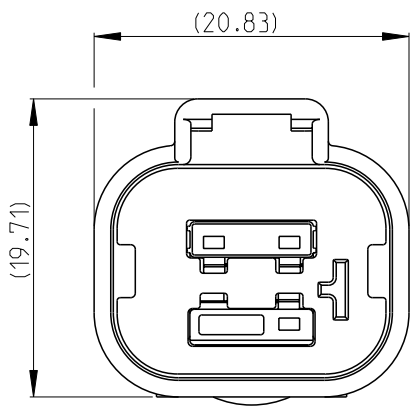
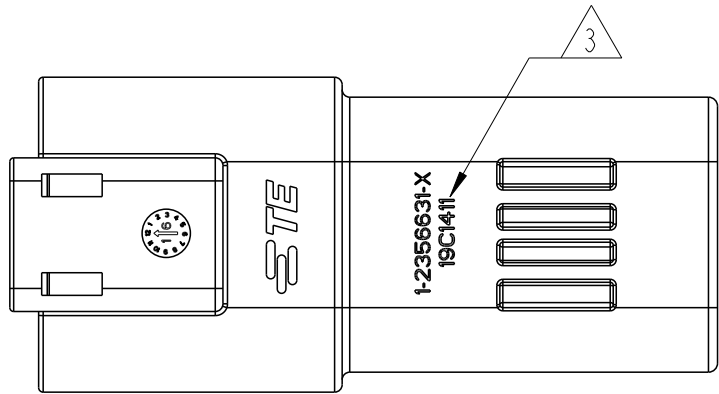
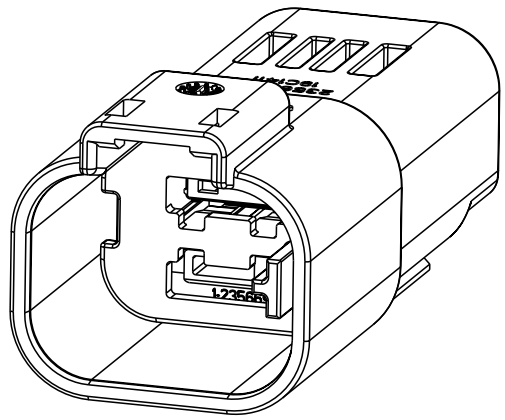
6. WIRE NO

7. APPLICABLE TERMINAL PART NUMBERS AND WIRE SIZE:

2141114-1	TIN	GENERAL (USCAR-2 V2)	0.35	Ø1.10-Ø1.40	963142-2	963143-1
2141114-3	SILVER	HIGH VIBRATION (USCAR-2 V3)				
2141116-1	TIN	GENERAL (USCAR-2 V2)	0.5-0.75	Ø1.40-Ø1.90	963142-1	963143-1
2141116-3	SILVER	HIGH VIBRATION (USCAR-2 V3)				
2177610-1	TIN	GENERAL (USCAR-2 V2)	1.0-1.5	Ø1.90-Ø2.40	963142-1	963143-1
2177610-3	SILVER	HIGH VIBRATION (USCAR-2 V3)				
TERMINAL PN	TERMINAL PLATING	APPLICATION	WIRE SIZE (MM2)	INSULATION WIRES(MM)	SWS P/N	BLIND PLUG P/N

CODING A PN:2356631-1 (V0) 2-2356631-1 (HB)				CODING B PN:2356631-2 (V0) 2-2356631-2 (HB)				CODING C PN:2356631-3 (V0) 2-2356631-3 (HB)				CODING D PN:2356631-4 (V0) 2-2356631-4 (HB)							
1				1				BLUE	PBT-GF30	TPA, CODE D	2								
	1				1			NATURAL	PBT-GF30	TPA, CODE C									
		1				1		GREEN	PBT-GF30	TPA, CODE B									
			1				1	YELLOW	PBT-GF30	TPA, CODE A	HOUSING	1							
1	1	1	1					GRAY	PBT-GF30										
				1	1	1	1	BLACK	PBT-GF30										
QTY. REQUEST PER ASSY									COLOR	MATERIAL	DESCRIPTION	ITEM NO							
9.4	9.4	9.4	9.4	10.1	10.1	10.1	10.1	WEIGHT OF EACH ASSY NO. (g)											
C	C	C	C	C	C	C	C	REVISION OF EACH ASSY NO.											
2-2356631-4 (HB)	2-2356631-3 (HB)	2-2356631-2 (HB)	2-2356631-1 (HB)	2356631-4 (V0)	2356631-3 (V0)	2356631-2 (V0)	2356631-1 (V0)	TE ASSEMBLY PN											
THIS DRAWING IS A CONTROLLED DOCUMENT.				DWN V. TANG CHK E. JIANG APVD I. YIN PRODUCT SPEC 108-32189 APPLICATION SPEC 114-32258 WEIGHT -				18SEP2019 18SEP2019 18SEP2019								TE Connectivity			
DIMENSIONS: mm				TOLERANCES UNLESS OTHERWISE SPECIFIED: 0 PLC ± 1 PLC ±0.25 2 PLC ±0.15 3 PLC ± 4 PLC ± ANGLES ± FINISH				NAME SUPERSEAL PRO 4POS.RECP. ASSEMBLY MCON1.2,CB TEMINAL											
MATERIAL - -				-				SIZE A2				CAGE CODE 00779		DRAWING NO C=2356631		RESTRICTED TO			
CUSTOMER DRAWING									SCALE 2:1		SHEET 1 OF 2		REV C						

REVISIONS					
P	LTR	DESCRIPTION	DATE	DWN	APVD
	-	SEE SHEET 1	-	-	-



NOTES:

1.RECEPTACLE 1-2356631-X MATES WITH 1-2356607-X PLUG (X=1, 2, 3, 4 FOR RELEVANT CODE).
RECEPTACLE 3-2356631-X MATES WITH 3-2356607-X PLUG (X=1, 2, 3, 4 FOR RELEVANT CODE).

2.MATERIAL: HOUSING: PBT GF30, SEE TABLE FOR COLOR
TPA: PBT GF30, SEE TABLE FOR COLOR

3. DATE CODE: IDENTIFIES THE YEAR, MONTH, DAY AND HOUR OF ASSEMBLY.
YEAR: FIRST AND SECOND DIGITS(19=2019)
MONTH: THIRD DIGIT , EXCLUDING 1 , A=JAN, B=FEB, C=MARCH...(K=OCTOBER)
DAY: FOURTH AND FIFTH DIGITS(14=14th DAY)
HOUR: SIXTH AND SEVENTH DIGITS(11=11AM)

4. PULL TPA TO PRE-LOCK BEFORE TERMINAL INSERTION IN CASE OF TPA BEING HIT TO END-LOCK POSITION.

5. REFER TO DRAWING DT04-DOVETAIL FOR CLIP INTERFACE DIMENSIONS, RECOMMEND MOUNTING CLIP PN LIST:.
PLASTIC VERSION PN:2355806-1.

6. WIRE NO

7. APPLICABLE TERMINAL PART NUMBERS AND WIRE SIZE:

2141114-1	TIN	GENERAL (USCAR-2 V2)	0.35	Ø1.10~Ø1.40	963142-2	963143-1
2141114-3	SILVER	HIGH VIBRATION (USCAR-2 V3)				
2141116-1	TIN	GENERAL (USCAR-2 V2)	0.5~0.75	Ø1.40~Ø1.90	963142-1	963143-1
2141116-3	SILVER	HIGH VIBRATION (USCAR-2 V3)				
2177610-1	TIN	GENERAL (USCAR-2 V2)	1.0~1.5	Ø1.90~Ø2.40	963142-1	963143-1
2177610-3	SILVER	HIGH VIBRATION (USCAR-2 V3)				
TERMINAL PN	TERMINAL PLATING	APPLICATION	WIRE SIZE (MM2)	INSULATION WIRES(MM)	SWS P/N	BLIND PLUG P/N

CODING A PN:1-2356631-1 (V0) 3-2356631-1 (HB)				CODING B PN:1-2356631-2 (V0) 3-2356631-2 (HB)				CODING C PN:1-2356631-3 (V0) 3-2356631-3 (HB)				CODING D PN:1-2356631-4 (V0) 3-2356631-4 (HB)			
1				1					BLUE	PBT-GF30	TPA, CODE D	2			
	1				1				NATURAL	PBT-GF30	TPA, CODE C				
		1					1		GREEN	PBT-GF30	TPA, CODE B				
			1					1	YELLOW	PBT-GF30	TPA, CODE A	1			
1	1	1	1						GRAY	PBT-GF30	HOUSING				
				1	1	1	1	1	BLACK	PBT-GF30					
QTY. REQUEST PER ASSY									COLOR	MATERIAL	DESCRIPTION	ITEM NO			
9.6	9.6	9.5	9.5	10.3	10.3	10.2	10.2	WEIGHT OF EACH ASSY NO. (g)							
C	C	C	C	C	C	C	C	REVISION OF EACH ASSY NO.							
3-2356631-4 (HB)	3-2356631-3 (HB)	3-2356631-2 (HB)	3-2356631-1 (HB)	1-2356631-4 (V0)	1-2356631-3 (V0)	1-2356631-2 (V0)	1-2356631-1 (V0)	TE ASSEMBLY PN							
THIS DRAWING IS A CONTROLLED DOCUMENT.									DWN V. TANG 18SEP2019		TE Connectivity				
									CHK E. JIANG 18SEP2019						
									APVD J. YIN 18SEP2019						
									PRODUCT SPEC 108-32189						
									APPLICATION SPEC 114-32258						
DIMENSIONS: mm				TOLERANCES UNLESS OTHERWISE SPECIFIED:				NAME SUPERSEAL PRO 3POS.RECP. ASSEMBLY MCON1.2,CB TEMINAL		RESTRICTED TO					
				0 PLC ± 1 PLC ±0.25 2 PLC ±0.15 3 PLC ± 4 PLC ± ANGLES ± FINISH				SIZE A2		CAGE CODE 00779		DRAWING NO C=2356631			
MATERIAL - -				- -				WEIGHT -		SCALE 2:1		SHEET 2 OF 2			
CUSTOMER DRAWING									SCALE 2:1		SHEET 2 OF 2		REV C		

Mouser Electronics

Authorized Distributor

Click to View Pricing, Inventory, Delivery & Lifecycle Information:

[TE Connectivity:](#)

[2356631-2](#) [2356631-3](#) [2356631-4](#) [1-2356631-1](#) [1-2356631-2](#) [1-2356631-3](#) [1-2356631-4](#) [2356631-1](#)