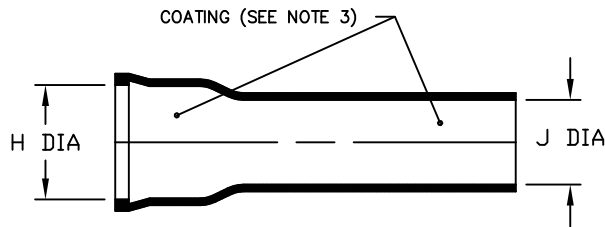


NOTES:

1. ALL DIMENSIONS ARE IN $\frac{\text{INCHES}}{[\text{MILLIMETERS}]}$
2. DIMENSIONS APPEARING IN TABLE ARE AS FOLLOWS:
- a - AS SUPPLIED
 - b - AFTER UNRESTRICTED RECOVERY
3. COATING IS OPTIONAL. AS SUPPLIED DIMENSIONS APPEARING IN TABLE ARE FOR UNCOATED PARTS. WHEN COATING IS ADDED, ENTRY DIAMETERS WILL BE REDUCED BY .06 MAX.
4. "S" & "T" DIMENSIONS APPLY TO A MINIMUM OF 240° OF CIRCUMFERENCE



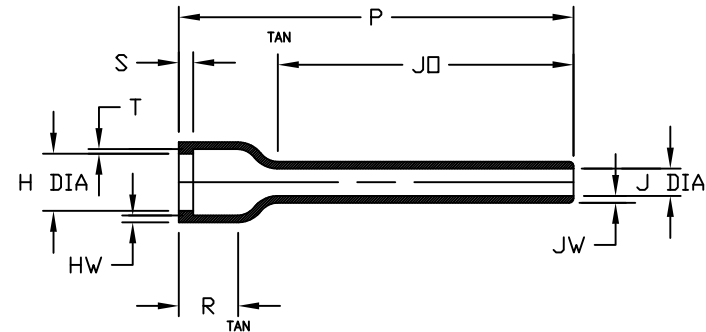
AS SUPPLIED

2

1

REVISIONS

LTR	DESCRIPTION	DATE
U2	REVISED PER ECO-14-003735	03/05/14



AFTER UNRESTRICTED RECOVERY

TABLE OF DIMENSIONS

PART NUMBER	H		J		P	R	JO	HW	JW	S	T
	Min	Max	Min	Max							
	a	b	a	b							
202F211	$\frac{.94}{[23,9]}$	$\frac{.39}{[9,9]}$	$\frac{.68}{[17,3]}$	$\frac{.26}{[6,6]}$	$\frac{4.17}{[105,9]}$	$\frac{.46}{[11,7]}$	$\frac{3.40}{[86,4]}$	$\frac{.06}{[1,5]}$	$\frac{.06}{[1,5]}$	$\frac{.06}{[1,5]}$	$\frac{.05}{[1,3]}$
202F221	$\frac{1.07}{[27,2]}$	$\frac{.52}{[13,2]}$	$\frac{.82}{[20,8]}$	$\frac{.30}{[7,6]}$	$\frac{4.77}{[121,2]}$	$\frac{.48}{[12,2]}$	$\frac{3.88}{[98,6]}$	$\frac{.06}{[1,5]}$	$\frac{.06}{[1,5]}$	$\frac{.06}{[1,5]}$	$\frac{.05}{[1,3]}$
202F232	$\frac{1.22}{[31,0]}$	$\frac{.73}{[18,5]}$	$\frac{.96}{[24,4]}$	$\frac{.35}{[8,9]}$	$\frac{5.46}{[138,7]}$	$\frac{.48}{[12,2]}$	$\frac{4.44}{[112,8]}$	$\frac{.07}{[1,8]}$	$\frac{.06}{[1,5]}$	$\frac{.07}{[1,8]}$	$\frac{.05}{[1,3]}$
202F242	$\frac{1.40}{[35,6]}$	$\frac{.87}{[22,1]}$	$\frac{1.13}{[28,7]}$	$\frac{.40}{[10,2]}$	$\frac{6.28}{[159,5]}$	$\frac{.48}{[12,2]}$	$\frac{5.15}{[130,8]}$	$\frac{.07}{[1,8]}$	$\frac{.06}{[1,5]}$	$\frac{.07}{[1,8]}$	$\frac{.05}{[1,3]}$
202F253	$\frac{1.53}{[38,9]}$	$\frac{1.11}{[28,2]}$	$\frac{1.24}{[31,5]}$	$\frac{.43}{[10,9]}$	$\frac{7.00}{[177,8]}$	$\frac{.55}{[14,0]}$	$\frac{5.60}{[142,2]}$	$\frac{.07}{[1,8]}$	$\frac{.06}{[1,5]}$	$\frac{.07}{[1,8]}$	$\frac{.07}{[1,8]}$
202F263	$\frac{1.78}{[45,2]}$	$\frac{1.27}{[32,3]}$	$\frac{1.51}{[38,4]}$	$\frac{.50}{[12,7]}$	$\frac{8.00}{[203,2]}$	$\frac{.60}{[15,2]}$	$\frac{6.42}{[163,1]}$	$\frac{.07}{[1,8]}$	$\frac{.06}{[1,5]}$	$\frac{.07}{[1,8]}$	$\frac{.07}{[1,8]}$
202F274	$\frac{2.03}{[51,6]}$	$\frac{1.62}{[41,1]}$	$\frac{1.79}{[45,5]}$	$\frac{.59}{[15,0]}$	$\frac{8.00}{[203,2]}$	$\frac{.60}{[15,2]}$	$\frac{6.21}{[157,7]}$	$\frac{.07}{[1,8]}$	$\frac{.07}{[1,8]}$	$\frac{.07}{[1,8]}$	$\frac{.07}{[1,8]}$

IF THIS DOCUMENT IS PRINTED IT BECOMES UNCONTROLLED.
CHECK FOR THE LATEST REVISION.

Raychem Molded Parts
CUSTOMER DRAWING

COMPATIBILITY CHART

MATERIAL DASH NO.	MATERIAL DESCRIPTION	RT SPEC	COATING SLASH NUMBER	COATING S NUMBER
-50	Flexible, VPB	RT-1313	N/A	
-51	Flexible, EPB	RT-1321	/86,/164,/180	S-1048;S-1124;S-1030/1
-71	Flexible, Polyolefin	RT-1316	/42,/86,/180	S-1017;S-1048;S-1030/1
-770	NBCCS	RT-770 TYPE II	N/A	

UNLESS OTHERWISE SPECIFIED
DIMENSIONS ARE INCHES. METRIC
DIMENSIONS ARE IN BRACKETS.

DECIMAL TOLERANCES

.XXX \pm 0.005 [0.13 mm]
.XX \pm 0.01 [0.25 mm]
.X \pm 0.1 [0.50 mm]

ANGLE TOLERANCE

.X \pm 1 DEG.

TE CONNECTIVITY RESERVES THE RIGHT TO
AMEND THIS DRAWING AT ANY TIME. USERS
SHOULD EVALUATE THE SUITABILITY OF THE
PRODUCT FOR THEIR APPLICATION.

© 2013 Tyco Electronics Corporation, a TE connectivity Ltd. company. All rights reserved.

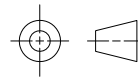
DRAWN

MMazariegos

APPROVED

SGravano

THIRD ANGLE
PROJECTION



TE Connectivity

TITLE

Boot, Straight With Lip

SIZE

B

CODE IDENT. NO.

06090

DWG. NO.

202F211thru274

DO NOT SCALE THIS DRAWING

SHEET 1 OF 1

Mouser Electronics

Authorized Distributor

Click to View Pricing, Inventory, Delivery & Lifecycle Information:

[TE Connectivity:](#)

[202F253-770-0](#) [202F242-770-0](#)