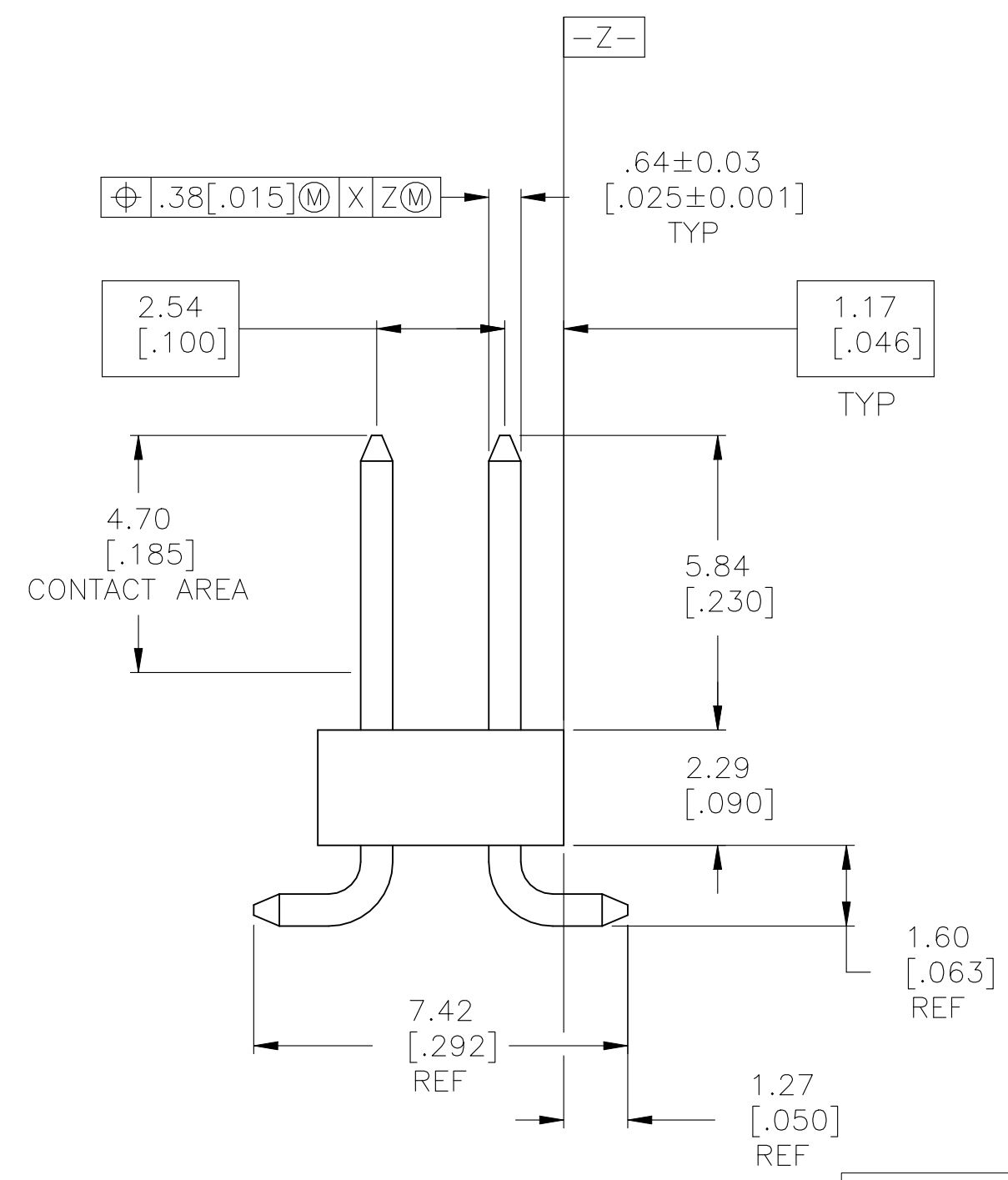
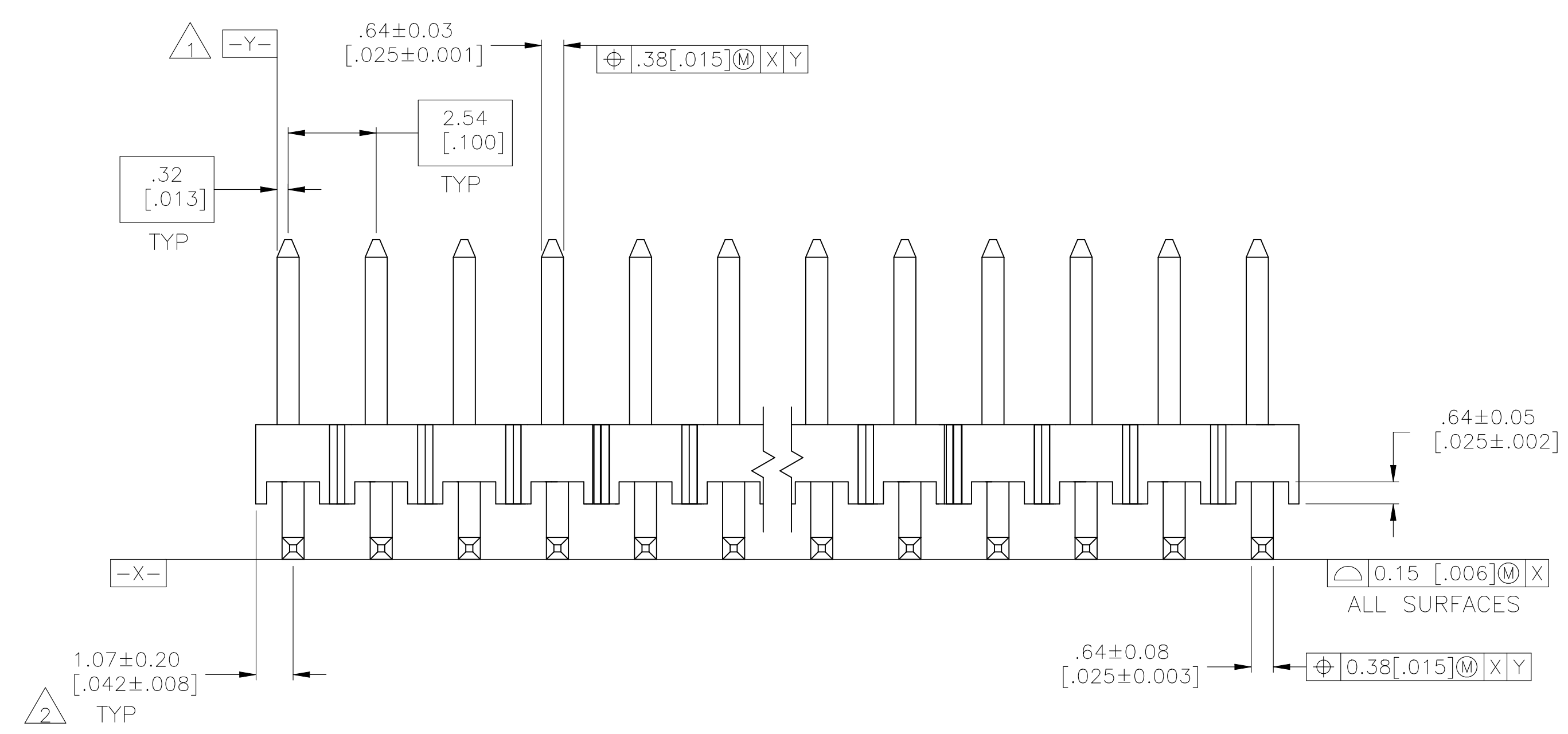
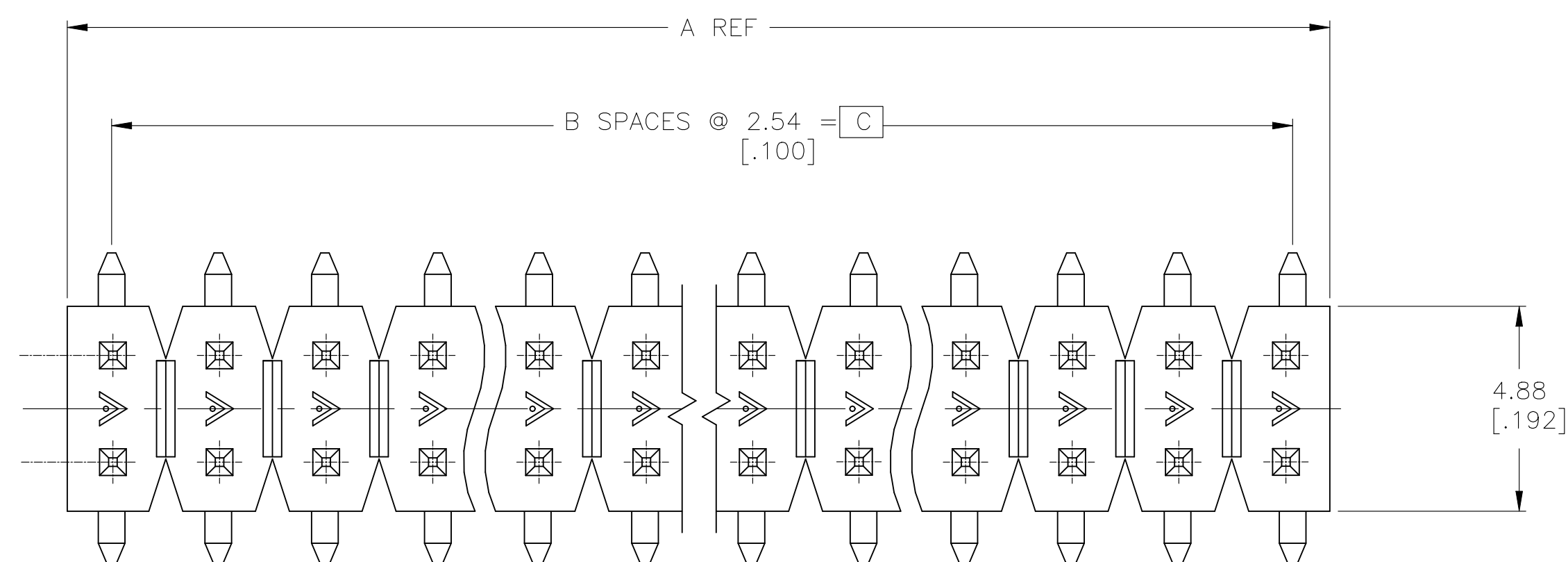
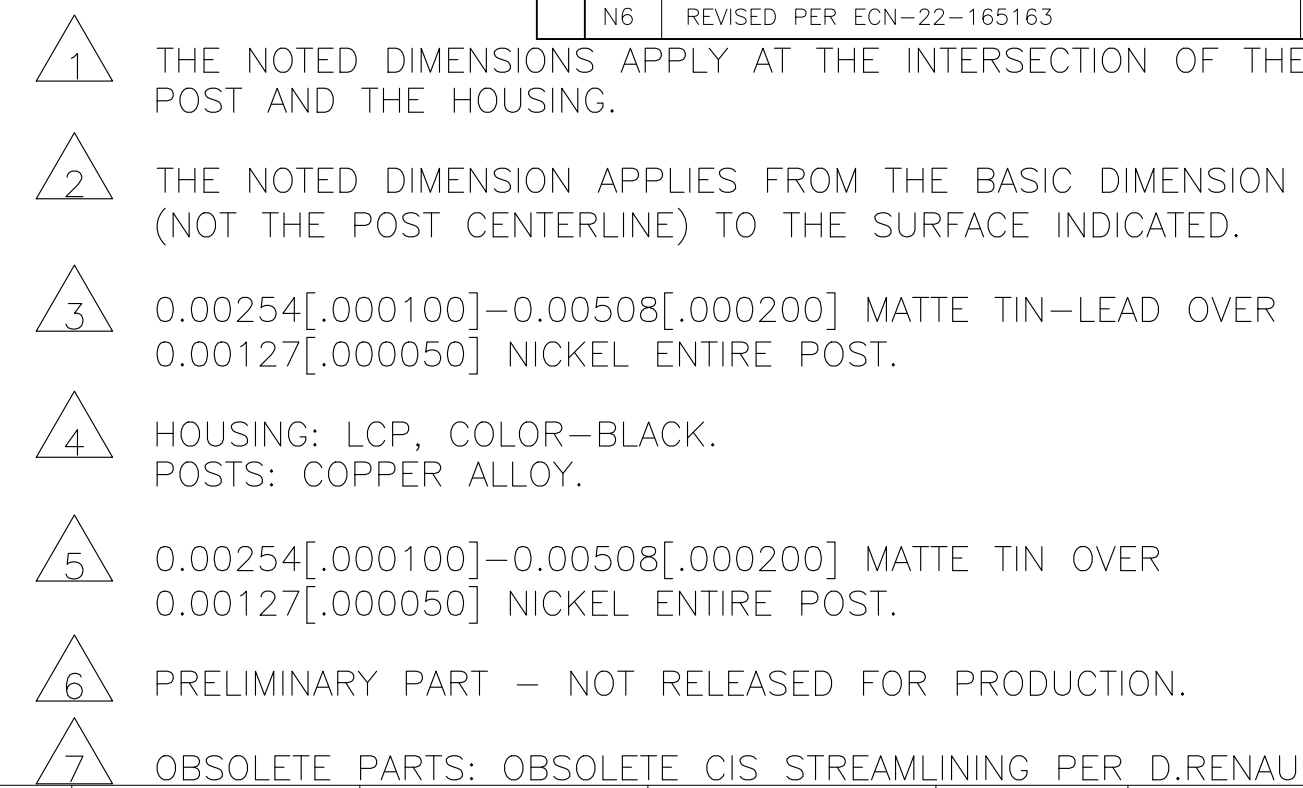
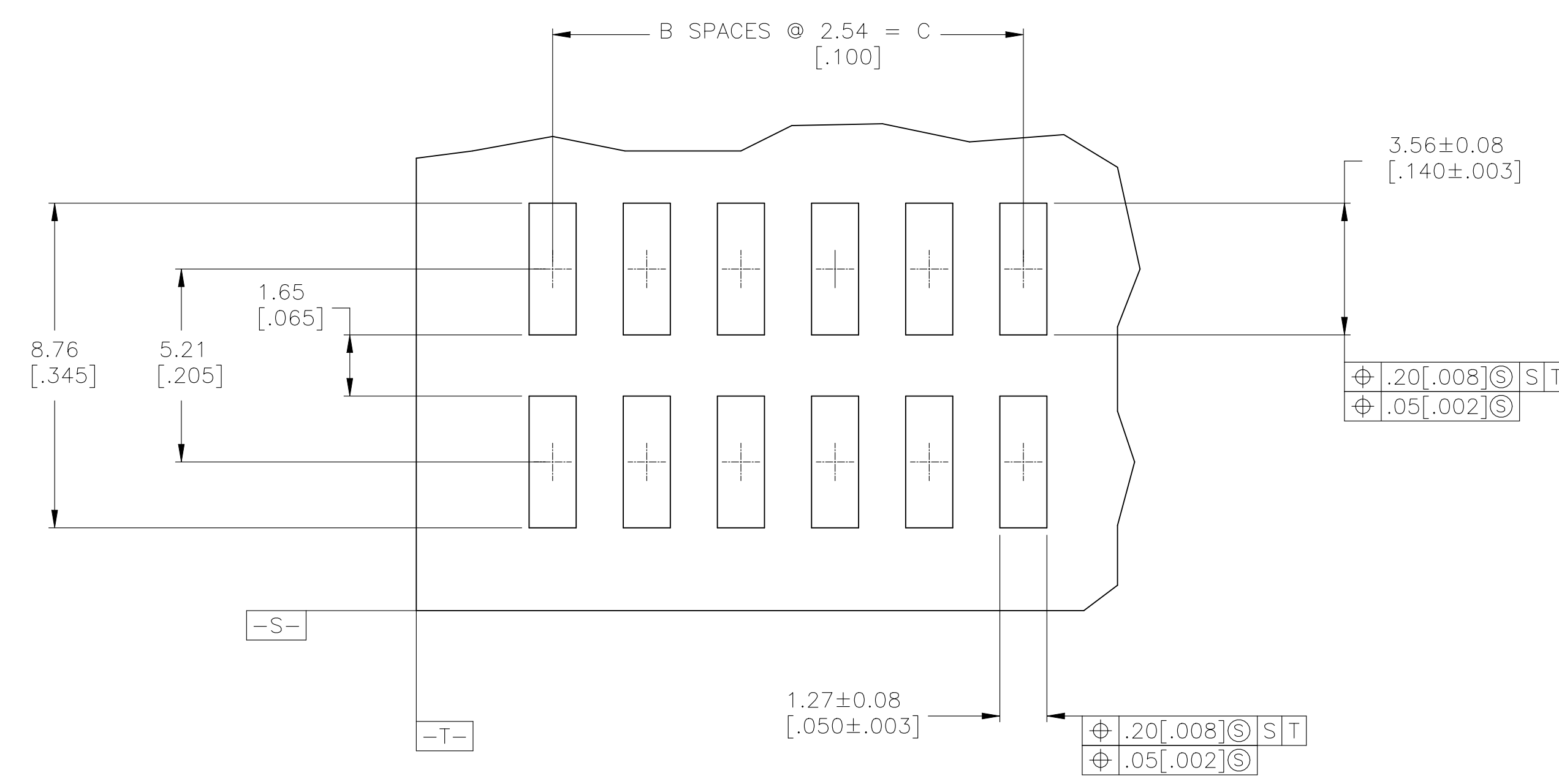


REVISIONS					
P	LTR	DESCRIPTION	DATE	DWN	APVD
	N6	REVISED PER ECN-22-165163	19JUL2022	RK	MF



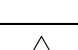


[.050] REF	OBSOLETE	\triangle_3	35.56 [1.400]	14	37.69 [1.484]	30	—1-146134-4—
\triangle_7 SUPERCEDED BY 6-146134-3		\triangle_3	33.02 [1.300]	13	35.15 [1.384]	28	—1-146134-3—
	OBSOLETE	\triangle_3	30.48 [1.200]	12	32.61 [1.284]	26	—1-146134-2—
	OBSOLETE	\triangle_3	27.94 [1.100]	11	30.07 [1.184]	24	—1-146134-1—
\triangle_7 SUPERCEDED BY 6-146134-0		\triangle_3	25.40 [1.000]	10	27.53 [1.084]	22	—1-146134-0—
	OBSOLETE	\triangle_3	22.86 [.900]	9	24.99 [.984]	20	—146134-9—
\triangle_7	OBSOLETE	\triangle_3	20.32 [.800]	8	22.45 [.884]	18	—146134-8—
	OBSOLETE	\triangle_3	17.78 [.700]	7	19.91 [.784]	16	—146134-7—
	OBSOLETE	\triangle_3	15.24 [.600]	6	17.37 [.684]	14	—146134-6—
	OBSOLETE	\triangle_3	12.70 [.500]	5	14.83 [.584]	12	—146134-5—
	OBSOLETE	\triangle_3	10.16 [.400]	4	12.29 [.484]	10	—146134-4—
	OBSOLETE	\triangle_3	7.62 [.300]	3	9.75 [.384]	8	—146134-3—
	OBSOLETE	\triangle_3	5.08 [.200]	2	7.21 [.284]	6	—146134-2—
	OBSOLETE	\triangle_3	2.54 [.100]	1	4.67 [.184]	4	—146134-1—

RECOMMENDED PCB LAYOUT



RECOMMENDED PCB LAYOUT
FOR USE WITH .008 THICK STENCIL

PLATING	C	B	A	NO OF POSN	PART NUMBER
THIS DRAWING IS A CONTROLLED DOCUMENT.			DWN J KNAUB 30SEP94 DWK G DUBNICZKI 30SEP94 APVD G DUBNICZKI 30SEP94	 TE Connectivity	
DIMENSIONS: mm [INCHES]		TOLERANCES UNLESS OTHERWISE SPECIFIED: 0 PLC ± - 1 PLC ± - 2 PLC ± 0.13[.005] 3 PLC ± - 4 PLC ± - ANGLES ± -		NAME SURFACE MOUNT HEADER ASSY, MOD II, B/A, VERT, DR, .100 X.100 CL, .025 SQ. POST	
		APPLICATION SPEC -		SIZE CAGE CODE DRAWING NO RESTRICTED TO A1 00779 C-146134 -	
MATERIAL 		FINISH SEE TABLE		SCALE 8:1 SHEET 1 OF 1 REV N6	
CUSTOMER DRAWING					

Mouser Electronics

Authorized Distributor

Click to View Pricing, Inventory, Delivery & Lifecycle Information:

[TE Connectivity:](#)

[146134-7](#)