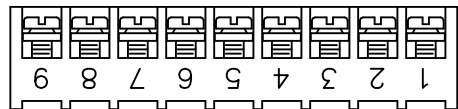
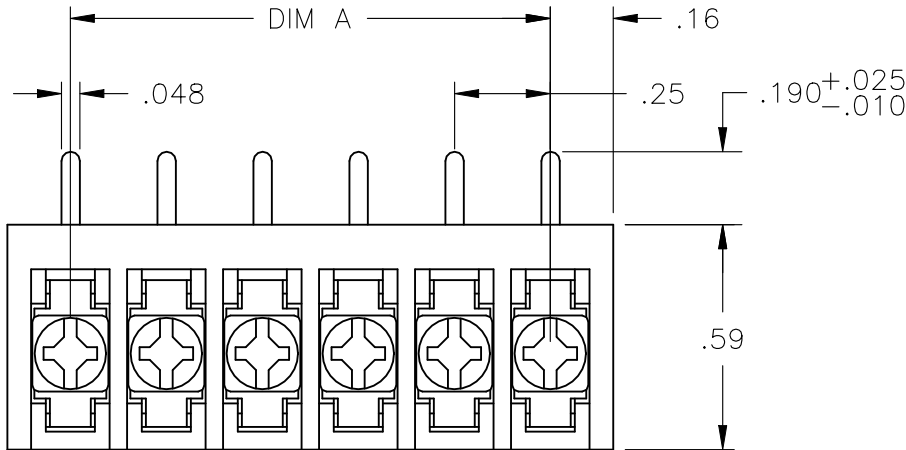


REVISIONS					
P	LTR	DESCRIPTION	DATE	DWN	APVD
	F1	OBSOLETING THE PN 1546119-5	29SEP2023	SP	PS

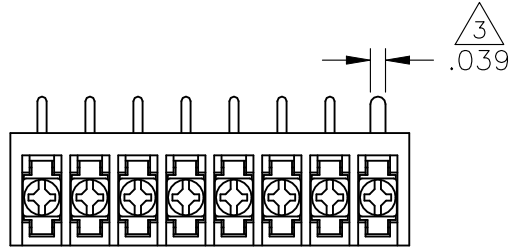
MATERIAL:  
HOUSING: THERMOPLASTIC, UL94V-0, BLACK.  
TERMINAL: BRIGHT TIN PLATED, COPPER ALLOY.  
M3 SCREWS: ZINC PLATED STEEL.  
ELECTRICAL:  
RATED CURRENT: 10A.  
OPERATING VOLTAGE: 300V.  
WIRE RANGE: 16-30 AWG.

MECHANICAL:  
PITCH (TERMINAL SPACING): .250"  
OPERATING TEMP.: 120°C MAX.

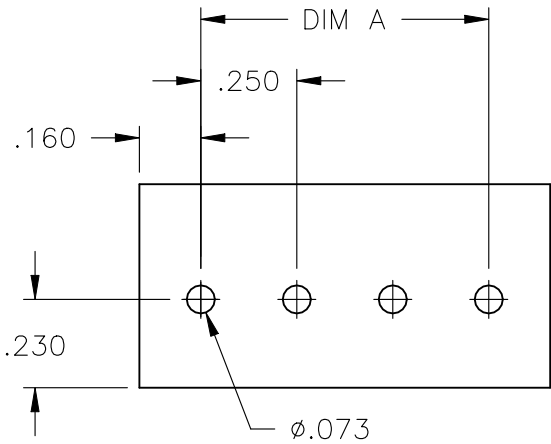
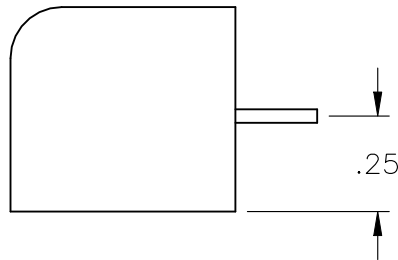
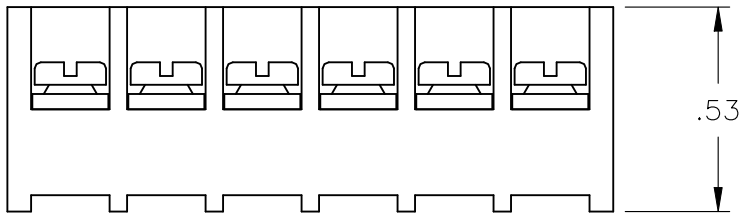
- 1
- 2
- 3
- 4
- 5
- SEE FIGURE.
- M3 SCREWS BOTTOMED.
- RECOMMENDED PCB HOLE DIAMETER: .090".
- PRELIMINARY PART NUMBER.
- OBSOLETE PARTS: OBSOLETE CIS STREAMLINING PER D.RENAUD/D.SINISI



1-1546119-4


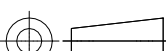


3-1546099-2



RECOMMENDED PCB LAYOUT

	7.25	30	3PCR-30-006	3-1546099-0
5	7.00	29	3PCR-29-006	2-1546099-9
5	6.75	28	3PCR-28-006	2-1546099-8
5	6.50	27	3PCR-27-006	2-1546099-7
5	6.25	26	3PCR-26-006	2-1546099-6
5	6.00	25	3PCR-25-006	2-1546099-5
5	5.75	24	3PCR-24-006	2-1546099-4
5	5.50	23	3PCR-23-006	2-1546099-3
5	5.25	22	3PCR-22-006	2-1546099-2
5	5.00	21	3PCR-21-006	2-1546099-1
	4.75	20	3PCR-20-006	2-1546119-0
	4.50	19	3PCR-19-006	1-1546119-9
5	4.25	18	3PCR-18-006	1-1546099-8
5	4.00	17	3PCR-17-006	1-1546099-7
5	3.75	16	3PCR-16-006	1-1546099-6
5	3.50	15	3PCR-15-006	1-1546099-5
5	3.25	14	3PCR-14-006	1-1546099-4
5	3.00	13	3PCR-13-006	1-1546099-3
5	2.75	12	3PCR-12-006	1-1546119-7
	2.50	11	3PCR-11-006	1-1546119-6
	2.25	10	3PCR-10-006	1-1546119-5
5	2.00	9	3PCR-09-256	1-1546119-4
5	2.00	9	3PCR-09-006	1-1546119-3
5	1.75	8	3PCR-08-310	3-1546099-2
	1.75	8	3PCR-08-006	1-1546119-2
	1.50	7	3PCR-07-006	1-1546119-0
5	1.25	6	3PCR-06-302	3-1546099-1
	1.25	6	3PCR-06-006	1-1437646-2
	1.00	5	3PCR-05-006	1437646-9
	.75	4	3PCR-04-006	1546119-8
	.50	3	3PCR-03-006	1546099-1
5	.25	2	3PCR-02-006	1546119-5
	DIM "A"	NO OF POS	CATALOG NUMBER	TE PART NO.

THIS DRAWING IS A CONTROLLED DOCUMENT.		DWN S SCHLEGEL 4/22/03		<div>TE Connectivity</div>			
		CHK S. YODER 6/18/02					
DIMENSIONS: INCHES		TOLERANCES UNLESS OTHERWISE SPECIFIED:		APVD S. YODER 6/18/02		NAME	
		0 PLC ± -		3PCR-XX-006 ASSEMBLY			
		1 PLC ± -					
		2 PLC ± .02					
		3 PLC ± .010		SIZECAGE CODEDRAWING NORESTRICTED TO			
		4 PLC ± -					
MATERIAL		FINISH		—		—	
—		—		WEIGHT		A300779C-1437646-9	
CUSTOMER DRAWING				SCALE		SHEET	
				NTS		1 OF 1	
						REV F1	

# Mouser Electronics

Authorized Distributor

Click to View Pricing, Inventory, Delivery & Lifecycle Information:

[TE Connectivity:](#)

[1-1546119-2](#)