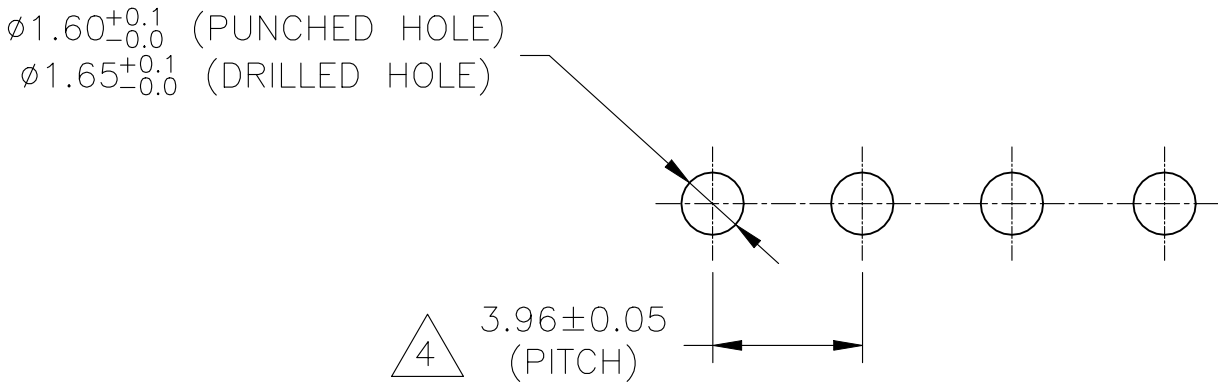
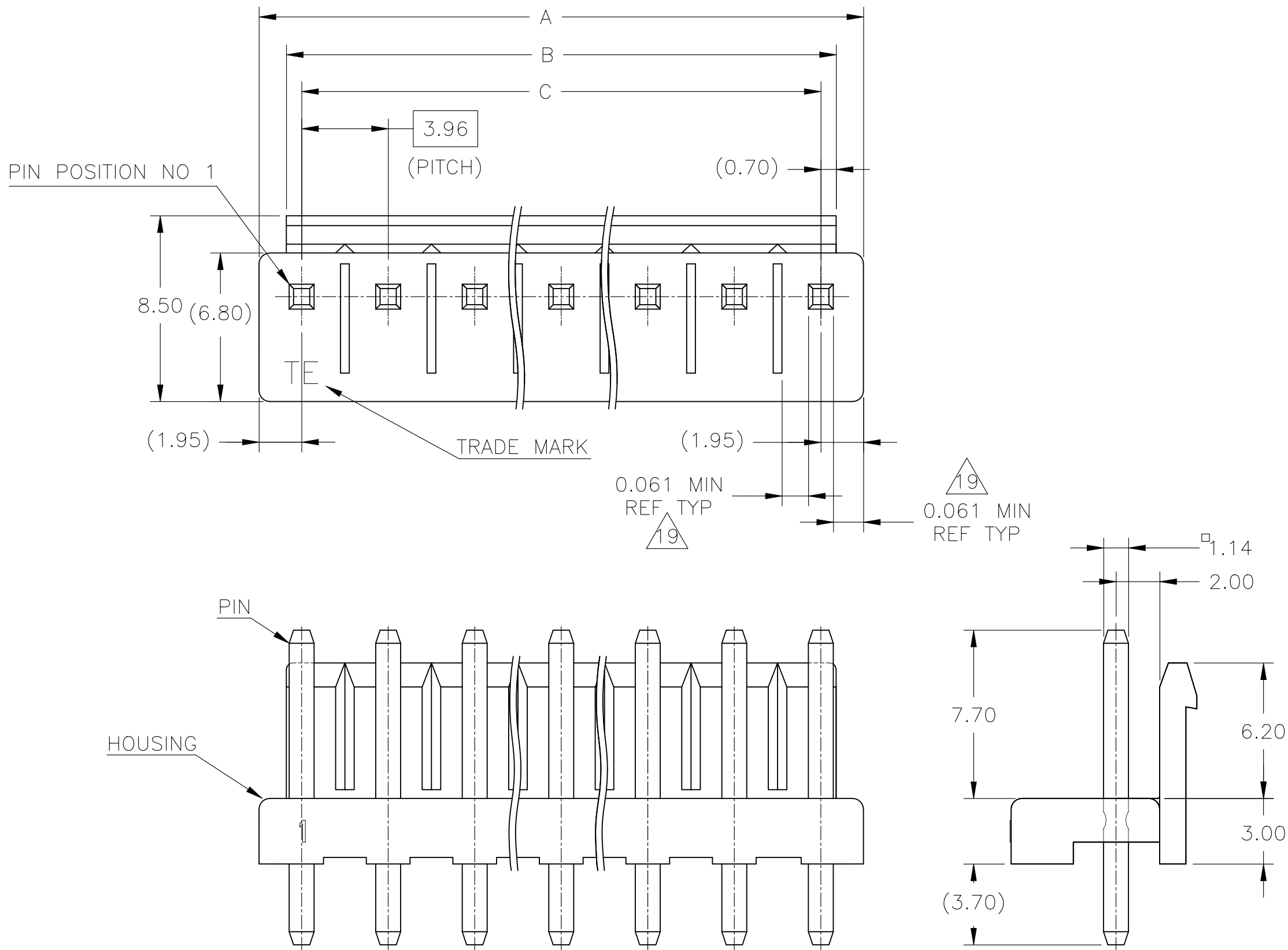


P	LTR	DESCRIPTION	DATE	DWN	APVD
	AA5	REVISED PER ECR-22-129998	12APR2022	WH	LC

- 1 MATING CONN P/N: □-1123722-□
- 2 APPLICABLE P.C.B LAYOUT: SEE FIG. 1
- 3 APPLICABLE P.C.B THICKNESS: 1.60
- 4 SKETCHES SHOW NO PINS MISSING.
- 6 PIN: POST TIN OVER BRASS
- 7 HOUSING: PBT, 30% GLASS, UL94-V0(ONLY NATURAL COLOR).
- 8 ○ : WITH PIN,
X : WITHOUT PIN.
- 10 SUPERSEDED BY 1744489-2.
- 11 SUPERSEDED BY 1744489-4.
- 12 SUPERSEDED BY 1744489-5.
- 13 SUPERSEDED BY 1744489-6.
- 14 SUPERSEDED BY 1744489-7.
- 15 SUPERSEDED BY 1744489-8.
- 16 SUPERSEDED BY 1744489-9.
- 17 SUPERSEDED BY 1-1744489-0.
- 18 SUPERSEDED BY 1-1744489-1.
- 19 VALUES FOR UL 61800-5-1, ONLY NATURAL COLOR.

Flam	RTIe deg C	HWI	HAI	CTI
V0	130	PLC 2	PLC 4	PLC 2_UL746

20 PRELIMINARY: NOT FOR PRODUCTION



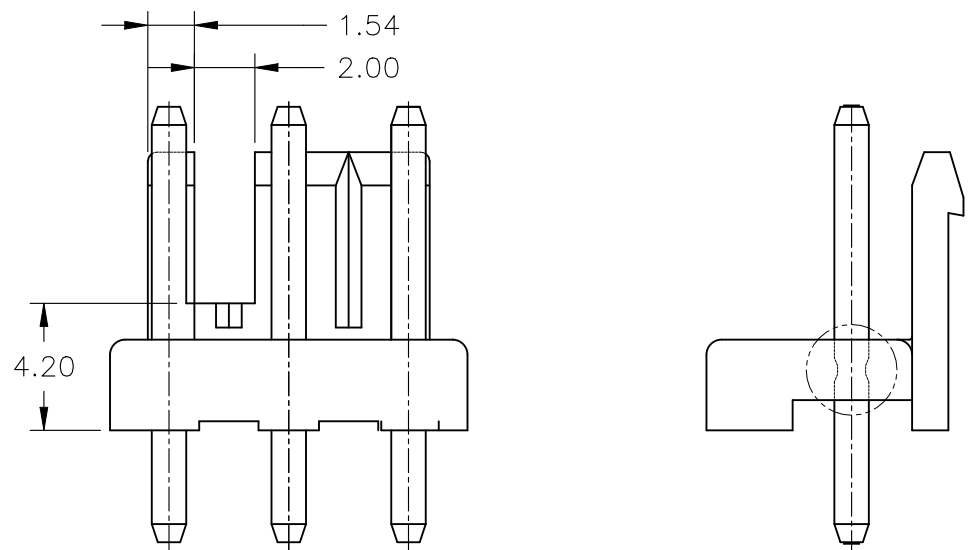
2 FIG.1

THIS DRAWING IS A CONTROLLED DOCUMENT.		DWN N.YAMASAKI 13MAR'01	TE Connectivity		
DIMENSIONS: mm		CHK M.SHINDO 13MAR'01			
		APVD Y.KASHIWA 13MAR'01	NAME		
		PRODUCT SPEC 108-5609	3.96MM PITCH ECONOMY POWER(EP) CONN HEADER ASSY		
MATERIAL SEE TABLE		APPLICATION SPEC 114-32134	SIZE A2	CAGE CODE 00779	DRAWING NO C=1123723
FINISH SEE TABLE		WEIGHT -	RESTRICTED TO -		REV AA5
CUSTOMER DRAWING			SCALE N/A	SHEET 1 OF 2	



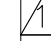


THIS DRAWING IS UNPUBLISHED.	RELEASED FOR PUBLICATION
© COPYRIGHT - By -	ALL RIGHTS RESERVED.



REVISIONS					
P	LTR	DESCRIPTION	DATE	DWN	APVD
	—	SEE SHEET 1	—	—	—

											27.72	29.12	31.62	NATURAL	8		7-1123723-8
														GREEN		6-1123723-8	
														BLACK		5-1123723-8	
														RED		4-1123723-8	
														BLUE		3-1123723-8	
														YELLOW		2-1123723-8	
														NATURAL		1-1123723-8	
														NATURAL		1-1123723-8	
											23.76	25.16	27.66	NATURAL	7		7-1123723-7
														GREEN		6-1123723-7	
														BLACK		5-1123723-7	
														RED		4-1123723-7	
														BLUE		3-1123723-7	
														YELLOW		2-1123723-7	
														NATURAL		1-1123723-7	
														NATURAL		1-1123723-7	
											19.80	21.20	23.70	NATURAL	6		7-1123723-6
														GREEN		6-1123723-6	
														BLACK		5-1123723-6	
														RED		4-1123723-6	
														BLUE		3-1123723-6	
														YELLOW		2-1123723-6	
														NATURAL		1-1123723-6	
														NATURAL		1-1123723-6	
											15.84	17.24	19.74	NATURAL	5		7-1123723-5
														GREEN		6-1123723-5	
														BLACK		5-1123723-5	
														RED		4-1123723-5	
														BLUE		3-1123723-5	
														YELLOW		2-1123723-5	
														NATURAL		1-1123723-5	
														NATURAL		1-1123723-5	
											11.88	13.28	15.78	NATURAL	4		7-1123723-4
														GREEN		6-1123723-4	
														BLACK		5-1123723-4	
														RED		4-1123723-4	
														BLUE		3-1123723-4	
														YELLOW		2-1123723-4	
														NATURAL		1-1123723-4	
														NATURAL		1-1123723-4	
											7.92	9.32	11.82	NATURAL	3		8-1123723-3
														NATURAL			7-1123723-3
														GREEN		6-1123723-3	
														BLACK		5-1123723-3	
														RED		4-1123723-3	
														BLUE		3-1123723-3	
														YELLOW		2-1123723-3	
														NATURAL		1-1123723-3	
											3.96	5.36	7.86	NATURAL	2		7-1123723-2
														GREEN		6-1123723-2	
														BLACK		5-1123723-2	
														RED		4-1123723-2	
														BLUE		3-1123723-2	
														YELLOW		2-1123723-2	
														NATURAL		1-1123723-2	
														NATURAL		1-1123723-2	
1	2	3	4	5	6	7	8	9	10	11	"C"	"B"REF	"A"REF	COLOR	POS	ASS'Y P/N	
PIN POSITION											DIMENSION			COLOR	POS	ASS'Y P/N	



8-1123723-3 SHOW \triangle_{20}

○	○	○	○	○	○	○	○	○	○	○	39.60	41.00	43.50	NATURAL	11		8-1123723-1		
○	○	○	○	○	○	○	○	○	○	○				GREEN		6-1123723-1			
○	○	○	○	○	○	○	○	○	○	○				BLACK		5-1123723-1			
○	○	○	○	○	○	○	○	○	○	○				RED		4-1123723-1			
○	○	○	○	○	○	○	○	○	○	○				BLUE		3-1123723-1			
○	○	○	○	○	○	○	○	○	○	○				YELLOW		2-1123723-1			
○	○	○	○	○	○	○	○	○	○	○				NATURAL		1-1123723-1			
○	○	○	○	○	○	○	○	○	○	○				NATURAL			7-1123723-0		
○	○	○	○	○	○	○	○	○	○	○	35.64	37.04	39.54	GREEN	6-1123723-0				
○	○	○	○	○	○	○	○	○	○	○				BLACK	5-1123723-0				
○	○	○	○	○	○	○	○	○	○	○				RED	4-1123723-0				
○	○	○	○	○	○	○	○	○	○	○				BLUE	3-1123723-0				
○	○	○	○	○	○	○	○	○	○	○				YELLOW	2-1123723-0				
○	○	○	○	○	○	○	○	○	○	○				NATURAL	1-1123723-0				
○	○	○	○	○	○	○	○	○	○	○				NATURAL		6-1123723-9			
○	○	○	○	○	○	○	○	○	○	○				31.68	33.08	35.58	NATURAL		7-1123723-9
○	X	○	○	○	X	○	○	○	○	○	39.60	41.00	43.50	NATURAL	7-1123723-1				
○	○	○	○	○	○	○	○	○	○	○	31.68	33.08	35.58	GREEN	6-1123723-9				
○	○	○	○	○	○	○	○	○	○	○				BLACK	5-1123723-9				
○	○	○	○	○	○	○	○	○	○	○				RED	4-1123723-9				
○	○	○	○	○	○	○	○	○	○	○				BLUE	3-1123723-9				
○	○	○	○	○	○	○	○	○	○	○				YELLOW	2-1123723-9				
○	○	○	○	○	○	○	○	○	○	○				NATURAL	1-1123723-9				
1	2	3	4	5	6	7	8	9	10	11				"C"	"B"REF	"A"REF	COLOR	POS	ASS'Y P/N
PIN POSITION 														DIMENSION					

THIS DRAWING IS A CONTROLLED DOCUMENT.		DWN N.YAMASAKI 13MAR'01 CHK M.SHINDO 13MAR'01 APVD Y.KASHIWA 13MAR'01		 TE Connectivity						
DIMENSIONS: mm		TOLERANCES, UNLESS OTHERWISE SPECIFIED: 0 PLC ± 1 PLC ± 0.50 2 PLC ± 0.30 3 PLC ± 4 PLC ± ANGLES ± 3°		NAME 3.96MM PITCH ECONOMY POWER(EP) CONN HEADER ASSY						
				PRODUCT SPEC 108-5609 APPLICATION SPEC 114-32134		SIZE A2	CAGE CODE 00779	DRAWING NO C-1123723	RESTRICTED TO —	
MATERIAL SEE TABLE		FINISH SEE TABLE		WEIGHT —						
				CUSTOMER DRAWING				SCALE N/A	SHEET 2 of 2	REV AA5

Mouser Electronics

Authorized Distributor

Click to View Pricing, Inventory, Delivery & Lifecycle Information:

[TE Connectivity:](#)

[3-1123723-2](#)