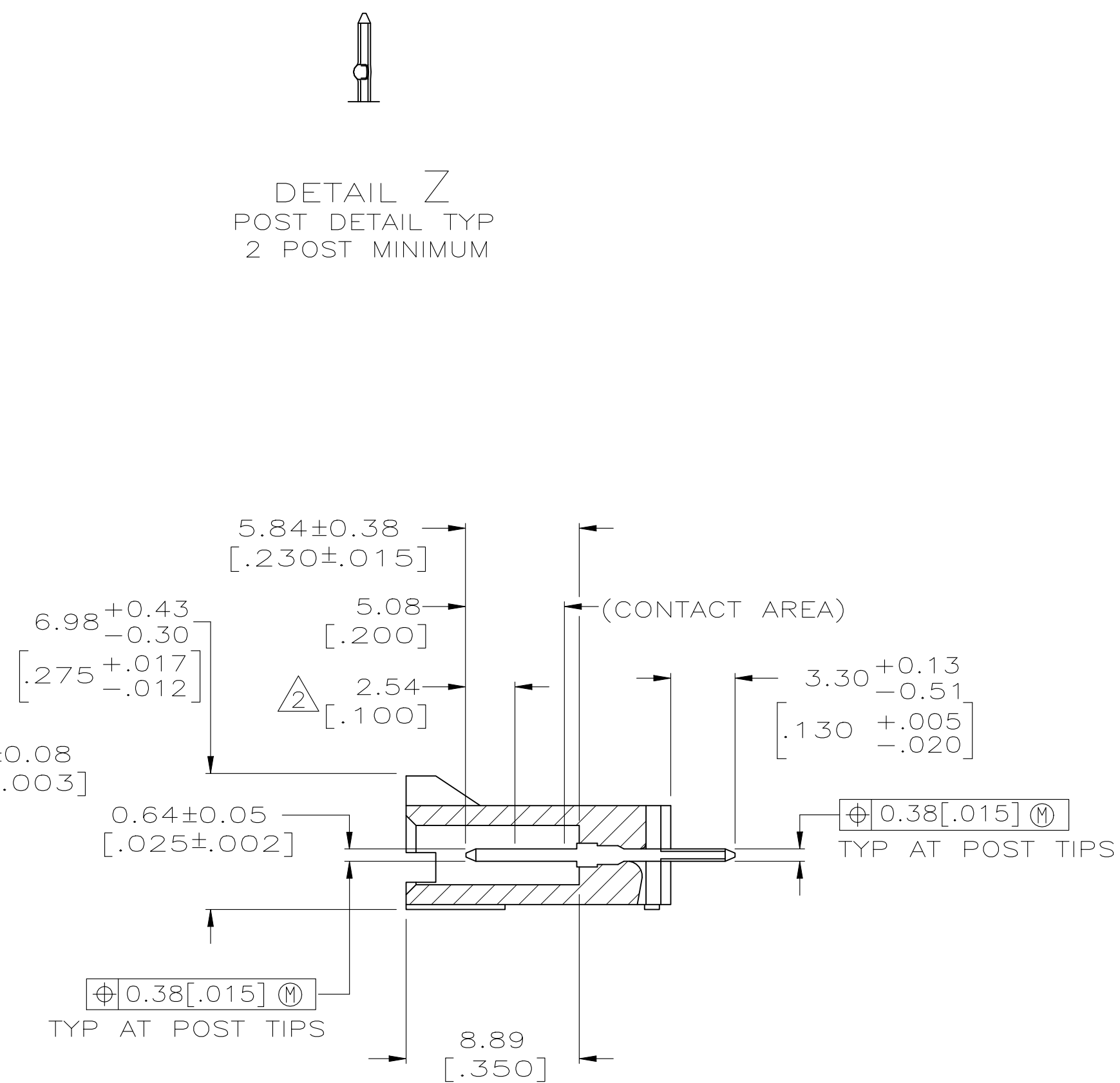
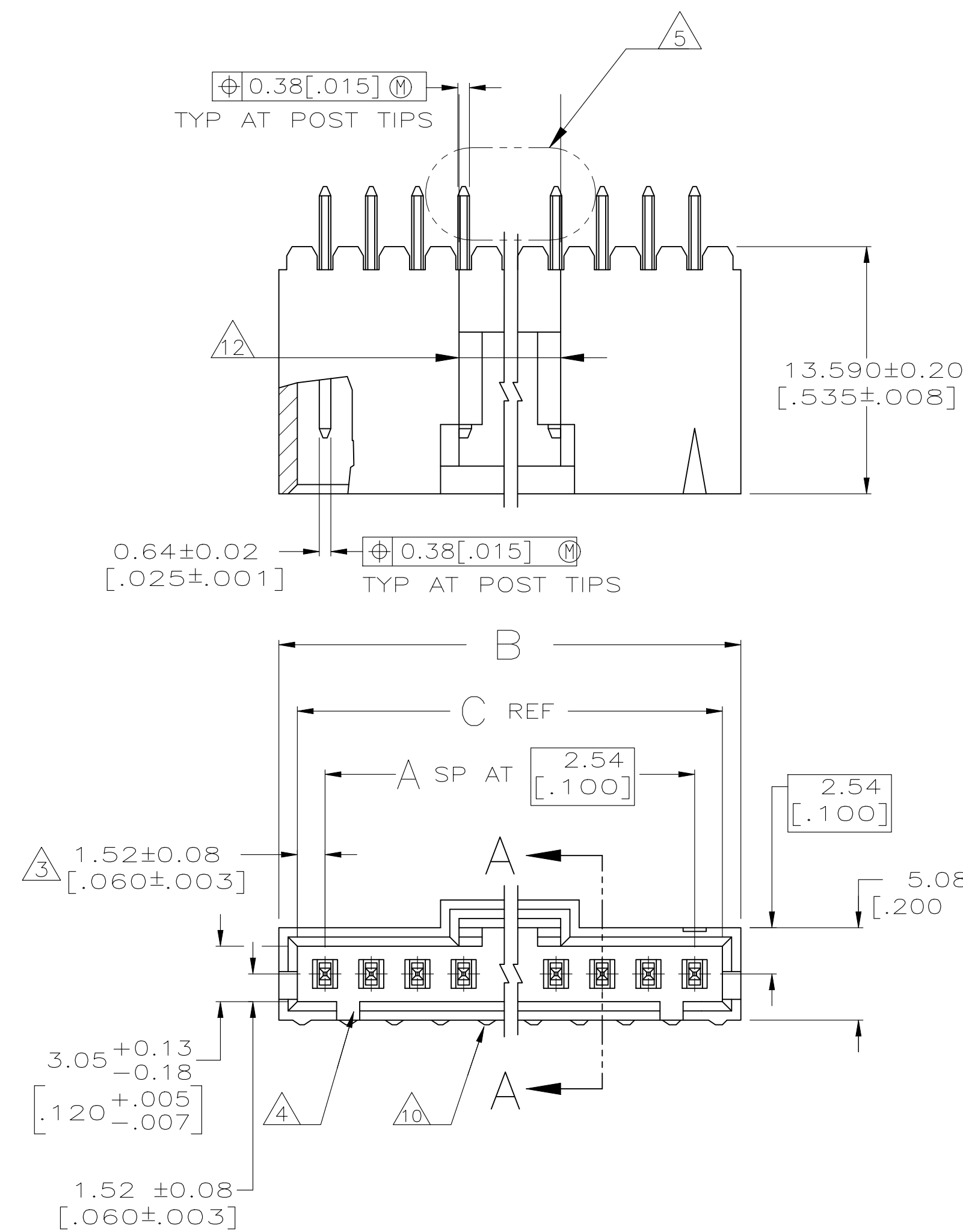
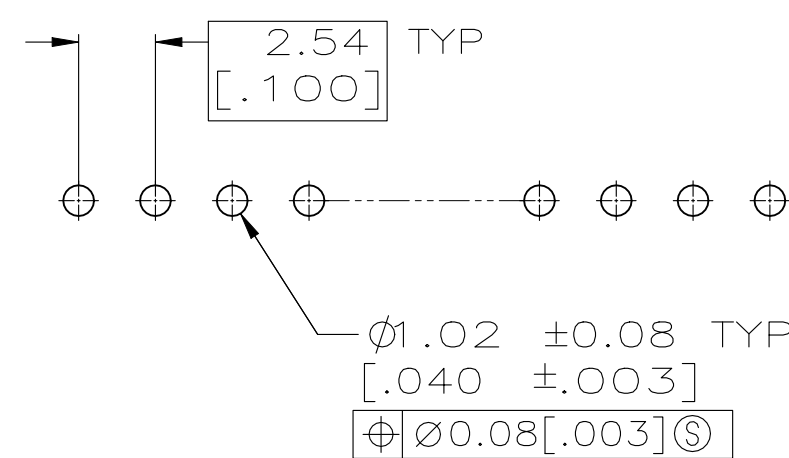


REVISIONS					
P	LTR	DESCRIPTION	DATE	DWN	APVD
	AD1	REVISED PER ECN-22-174625	16SEP2022	RK	MF




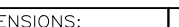
## SECTION A—A



## RECOMMENDED HOLE LAYOUT

1. .000100 BRIGHT TIN-LEAD OVER .000050 NICKEL.
2. POINT OF MEASUREMENT FOR PLATING THICKNESS.
3. THE NOTED DIMENSIONS APPLY AT THE INTERSECTION OF THE POST AND THE HOUSING.
4. ON ASSEMBLIES WITH FOUR OR MORE POSITIONS,  
TWO POLARIZATION SLOTS.  
ON ASSEMBLIES WITH TWO OR THREE POSITIONS,  
ONE POLARIZATION SLOT.
5. SELECT POST TAILS FORMED TO PROVIDE CONNECTOR HOLD DOWN  
UNTIL SOLDERED. CONFIGURATION ACCEPTS 0.69[.027]-2.03[.080]  
THICK PRINTED CIRCUIT BOARD. ( SEE DETAIL Z ).
6. .000100 BRIGHT TIN OVER .000050 NICKEL.
7. PRELIMINARY PART - NOT RELEASED FOR PRODUCTION.
8. .000100 MATTE TIN OVER .000050 NICKEL.
9. HIGH TEMPERATURE CONFIGURATION.
10. STANDOFFS NOT PRESENT ON UNDERSIDE OF ASSEMBLY
11. OBSOLETE PARTS: OBSOLETE CIS STREAMLINING PER D.RENAUD/D.SINIS
12. 0.25 [.010] RECESS PERMISSIBLE IN THIS AREA FOR MOLD SHUT OFF

<div><div>11</div></div>		<div><div>9</div></div>	<div><div>6</div></div>	23.37 [.920]	25.27 [.995]	8	9	3-103669-0
		<div><div>9</div></div>	<div><div>6</div></div>	8.13 [.320]	10.03 [.395]	2	3	2-103669-9
		<div><div>9</div></div>	<div><div>6</div></div>	15.75 [.620]	17.65 [.695]	5	6	2-103669-8
		<div><div>9</div></div>	<div><div>6</div></div>	13.21 [.520]	15.11 [.595]	4	5	2-103669-7
		<div><div>9</div></div>	<div><div>6</div></div>	10.67 [.420]	12.57 [.495]	3	4	2-103669-6
		<div><div>9</div></div>	<div><div>6</div></div>	5.59 [.220]	7.49 [.295]	1	2	2-103669-5
<div><div>11</div></div>	OBSOLETE	<div><div>9</div></div>	<div><div>1</div></div>	64.01 [2.520]	65.91 [2.595]	24	25	2-103669-4
<div><div>11</div></div>	OBSOLETE	<div><div>9</div></div>	<div><div>1</div></div>	61.47 [2.420]	63.37 [2.495]	23	24	2-103669-3
<div><div>11</div></div>	OBSOLETE	<div><div>9</div></div>	<div><div>1</div></div>	58.93 [2.320]	60.83 [2.395]	22	23	2-103669-2
<div><div>11</div></div>	OBSOLETE	<div><div>9</div></div>	<div><div>1</div></div>	56.39 [2.220]	58.29 [2.295]	21	22	2-103669-1
<div><div>11</div></div>	OBSOLETE	<div><div>9</div></div>	<div><div>1</div></div>	53.85 [2.120]	55.75 [2.195]	20	21	2-103669-0
<div><div>11</div></div>		<div><div>9</div></div>	<div><div>1</div></div>	51.31 [2.020]	53.21 [2.095]	19	20	1-103669-9
	OBSOLETE	<div><div>9</div></div>	<div><div>1</div></div>	48.77 [1.920]	50.67 [1.995]	18	19	1-103669-8
	OBSOLETE	<div><div>9</div></div>	<div><div>1</div></div>	46.23 [1.820]	48.13 [1.895]	17	18	1-103669-7
<div><div>11</div></div>		<div><div>9</div></div>	<div><div>1</div></div>	43.69 [1.720]	45.59 [1.795]	16	17	1-103669-6
		<div><div>9</div></div>	<div><div>1</div></div>	41.15 [1.620]	43.05 [1.695]	15	16	1-103669-5
<div><div>11</div></div>	OBSOLETE	<div><div>9</div></div>	<div><div>1</div></div>	38.61 [1.520]	40.51 [1.595]	14	15	1-103669-4
		<div><div>9</div></div>	<div><div>1</div></div>	36.07 [1.420]	37.97 [1.495]	13	14	1-103669-3
		<div><div>9</div></div>	<div><div>1</div></div>	33.53 [1.320]	35.43 [1.395]	12	13	1-103669-2
		<div><div>9</div></div>	<div><div>1</div></div>	30.99 [1.220]	32.89 [1.295]	11	12	1-103669-1
		<div><div>9</div></div>	<div><div>1</div></div>	28.45 [1.120]	30.35 [1.195]	10	11	1-103669-0
		<div><div>9</div></div>	<div><div>1</div></div>	25.91 [1.020]	27.81 [1.095]	9	10	103669-9
		<div><div>9</div></div>	<div><div>1</div></div>	23.37 [.920]	25.27 [.995]	8	9	103669-8
		<div><div>9</div></div>	<div><div>1</div></div>	20.83 [.820]	22.73 [.895]	7	8	103669-7
		<div><div>9</div></div>	<div><div>1</div></div>	18.29 [.720]	20.19 [.795]	6	7	103669-6
		<div><div>9</div></div>	<div><div>1</div></div>	15.75 [.620]	17.65 [.695]	5	6	103669-5
		<div><div>9</div></div>	<div><div>1</div></div>	13.21 [.520]	15.11 [.595]	4	5	103669-4
		<div><div>9</div></div>	<div><div>1</div></div>	10.67 [.420]	12.57 [.495]	3	4	103669-3
		<div><div>9</div></div>	<div><div>1</div></div>	8.13 [.320]	10.03 [.395]	2	3	103669-2
		<div><div>9</div></div>	<div><div>1</div></div>	5.59 [.220]	7.49 [.295]	1	2	103669-1
		REMARKS	PLATING	C	B	A	NO. OF POSN	PART NO.

THIS DRAWING IS A CONTROLLED DOCUMENT:		DWN. 3-5-91 S. SHUEY CHK. 2-14-92 M. RIDER		 TE Connectivity	
DIMENSIONS: INCHES		TOLERANCES UNLESS OTHERWISE SPECIFIED:		NAME:	
		0 P.L.C. ± — 1 P.L.C. ± — 2 P.L.C. ± .015(3X) 3 P.L.C. ± — 4 P.L.C. ± — ANGLES ± —		APD: 2-14-92 M. RIDER	
MATERIAL:		PRODUCT SPEC: 103-25034		2.54 HDR ASSY, VERT, SR [100] C/L 0.64 [025] SQ POST WITH PLZN, AMPMDU MTE	
HOUSING: LCP, CONTACTS: BRASS		APPLICATION SPEC: 114-25026		SIZE: CAGE CODE: DRAWING NO: RESTRICTED TO:	
FINISH: SEE TABLE		WEIGHT: —		A1 00779 C= 10366N	
		CUSTOMER DRAWING		SCALE: 4:1 SHEET 1 OF 2 REV. AD	

8

7

6

5

4

3

2

1

THIS DRAWING IS UNPUBLISHED.

RELEASED FOR PUBLICATION

ALL RIGHTS RESERVED.

REVISIONS

P	LTR	DESCRIPTION	DATE	DWN	APVD
—	—	SEE SHEET 1	—	—	—

OBSOLETE

11

<div><div>9</div><div>10</div></div>	<div><div>8</div></div>	64.01 [2.520]	65.91 [2.595]	24	25	7-103669-4
<div><div>9</div><div>10</div></div>	<div><div>8</div></div>	61.47 [2.420]	63.37 [2.495]	23	24	7-103669-3
<div><div>9</div><div>10</div></div>	<div><div>8</div></div>	58.93 [2.320]	60.83 [2.395]	22	23	7-103669-2
<div><div>9</div><div>10</div></div>	<div><div>8</div></div>	56.39 [2.220]	58.29 [2.295]	21	22	7-103669-1
<div><div>9</div><div>10</div></div>	<div><div>8</div></div>	53.85 [2.120]	55.75 [2.195]	20	21	7-103669-0
<div><div>9</div><div>10</div></div>	<div><div>8</div></div>	51.31 [2.020]	53.21 [2.095]	19	20	6-103669-9
<div><div>9</div><div>10</div></div>	<div><div>8</div></div>	48.77 [1.920]	50.67 [1.995]	18	19	6-103669-8
<div><div>9</div><div>10</div></div>	<div><div>8</div></div>	46.23 [1.820]	48.13 [1.895]	17	18	6-103669-7
<div><div>9</div><div>10</div></div>	<div><div>8</div></div>	43.69 [1.720]	45.59 [1.795]	16	17	6-103669-6
<div><div>9</div><div>10</div></div>	<div><div>8</div></div>	41.15 [1.620]	43.05 [1.695]	15	16	6-103669-5
<div><div>9</div><div>10</div></div>	<div><div>8</div></div>	38.61 [1.520]	40.51 [1.595]	14	15	6-103669-4
<div><div>9</div><div>10</div></div>	<div><div>8</div></div>	36.07 [1.420]	37.97 [1.495]	13	14	6-103669-3
<div><div>9</div><div>10</div></div>	<div><div>8</div></div>	33.53 [1.320]	35.43 [1.395]	12	13	6-103669-2
<div><div>9</div><div>10</div></div>	<div><div>8</div></div>	30.99 [1.220]	32.89 [1.295]	11	12	6-103669-1
<div><div>9</div><div>10</div></div>	<div><div>8</div></div>	28.45 [1.120]	30.35 [1.195]	10	11	6-103669-0
<div><div>9</div><div>10</div></div>	<div><div>8</div></div>	25.91 [1.020]	27.81 [1.095]	9	10	5-103669-9
<div><div>9</div><div>10</div></div>	<div><div>8</div></div>	23.37 [.920]	25.27 [.995]	8	9	5-103669-8
<div><div>9</div><div>10</div></div>	<div><div>8</div></div>	20.83 [.820]	22.73 [.895]	7	8	5-103669-7
<div><div>9</div><div>10</div></div>	<div><div>8</div></div>	18.29 [.720]	20.19 [.795]	6	7	5-103669-6
<div><div>9</div><div>10</div></div>	<div><div>8</div></div>	15.75 [.620]	17.65 [.695]	5	6	5-103669-5
<div><div>9</div><div>10</div></div>	<div><div>8</div></div>	13.21 [.520]	15.11 [.595]	4	5	5-103669-4
<div><div>9</div><div>10</div></div>	<div><div>8</div></div>	10.67 [.420]	12.57 [.495]	3	4	5-103669-3
<div><div>9</div><div>10</div></div>	<div><div>8</div></div>	8.13 [.320]	10.03 [.395]	2	3	5-103669-2
<div><div>9</div><div>10</div></div>	<div><div>8</div></div>	5.59 [.220]	7.49 [.295]	1	2	5-103669-1
REMARKS	PLATING	C	B	A	NO. OF POSN	PART NO.

11

OBSOLETE

THIS DRAWING IS A CONTROLLED DOCUMENT.

DIMENSIONS:  
INCHES

MATERIAL  
HOUSING: LCP,  
CONTACTS: BRASS

TOLERANCES UNLESS  
OTHERWISE SPECIFIED:

0. PLC  
1. PLC  
2. PLC  
3. PLC  
4. PLC  
ANGLES

± -  
± -  
± 0.13[.005]  
± -  
± -

FINISH  
SEE TABLE

DWN  
S. SHUEY  
CHK  
M. RIDER  
APVD  
M. RIDER

3-5-91  
2-14-92  
2-14-92

PRODUCT SPEC  
108-25034  
APPLICATION SPEC  
114-25026

WEIGHT  
—

TE Connectivity

HDR ASSY, VERT, SR  
2.54 .100 C/L 0.64 .025 SQ POST  
WITH PLZN, AMPMODU MTE

SIZE  
A1

CAGE CODE  
00779

DRAWING NO  
103669

RESTRICTED TO  
—

CUSTOMER DRAWING

SCALE  
4:1

SHEET  
2

OF  
2

REV  
AD1

4805 (1/15)

# Mouser Electronics

Authorized Distributor

Click to View Pricing, Inventory, Delivery & Lifecycle Information:

[TE Connectivity:](#)

[5-103669-6](#)