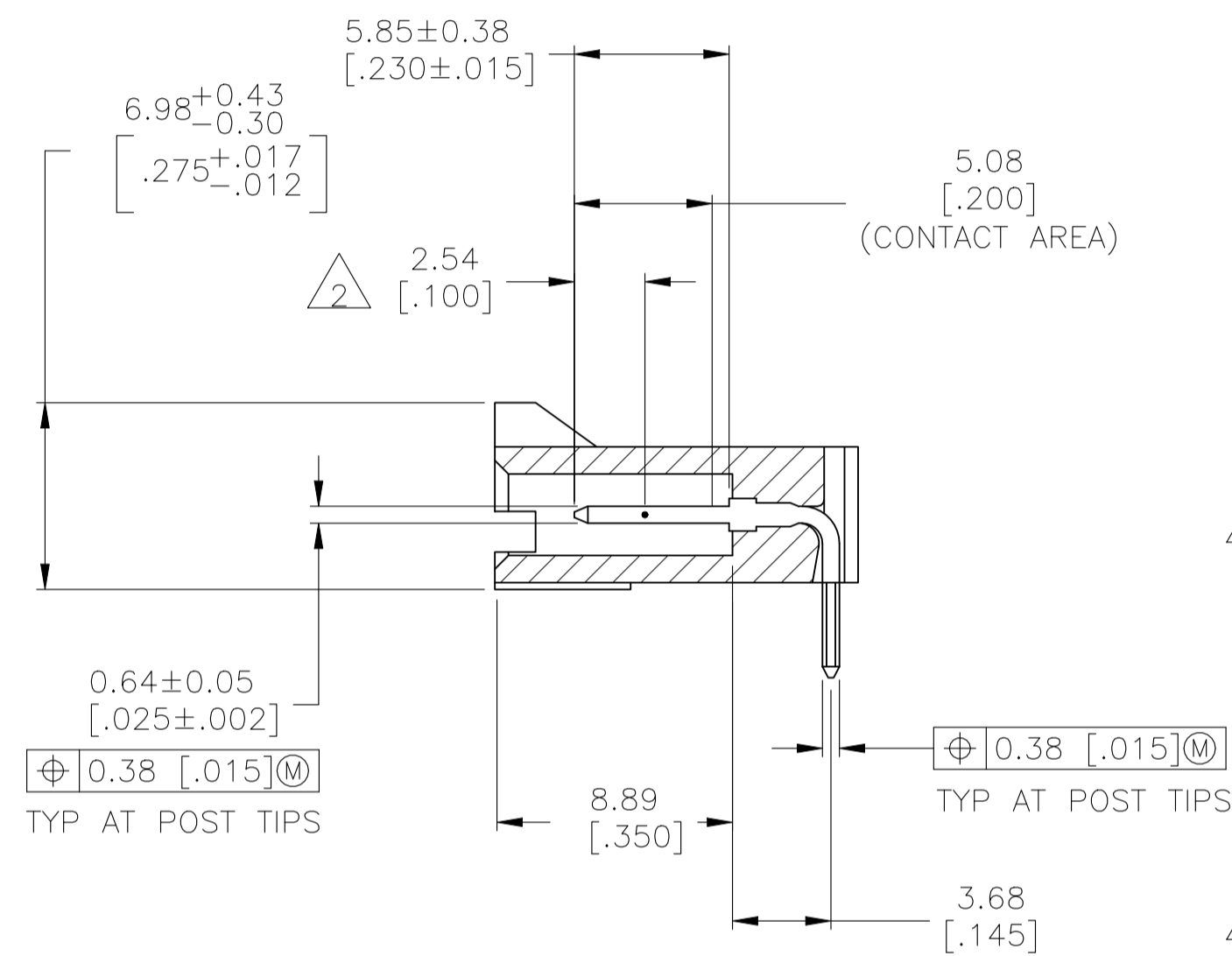
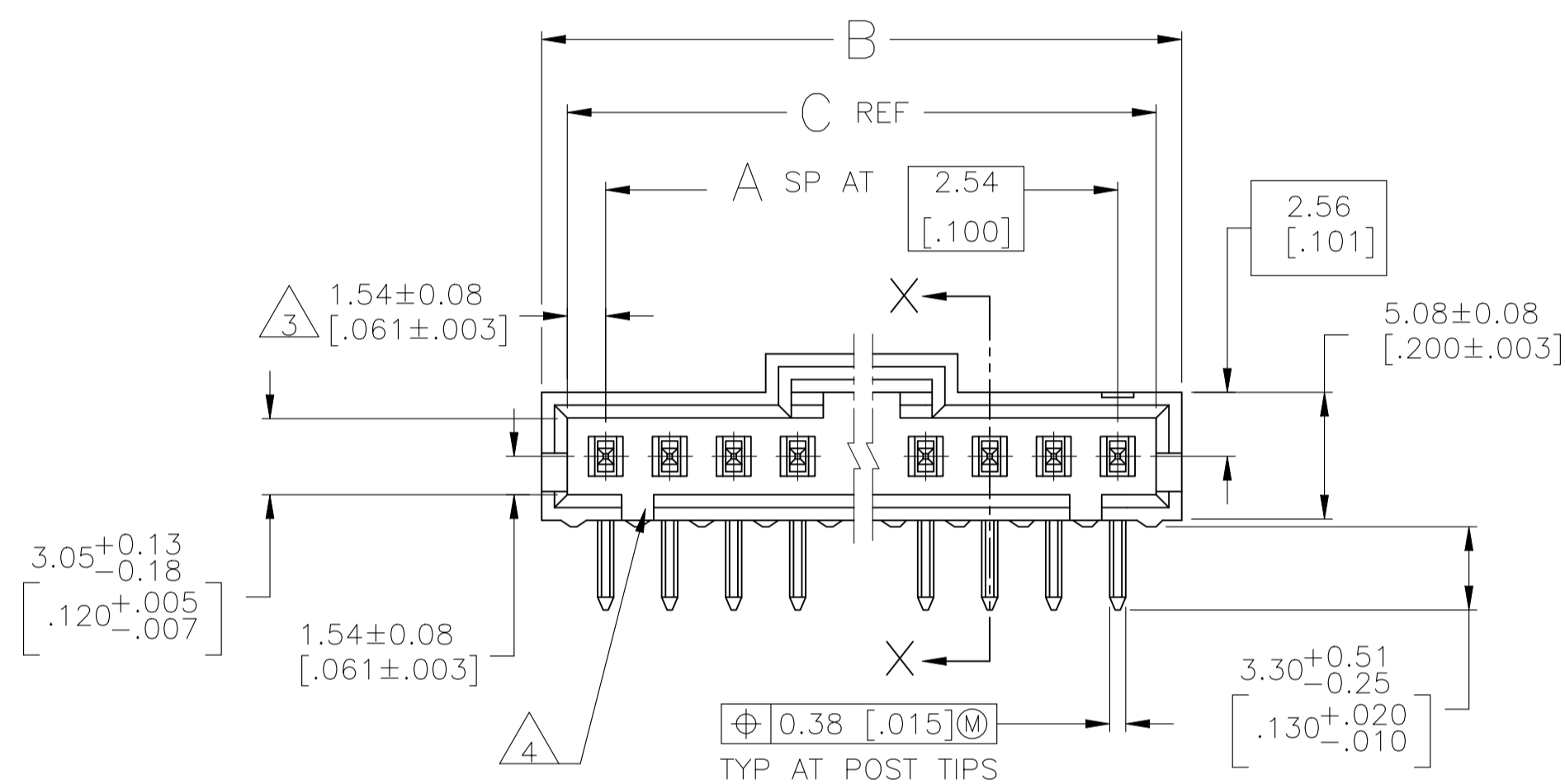
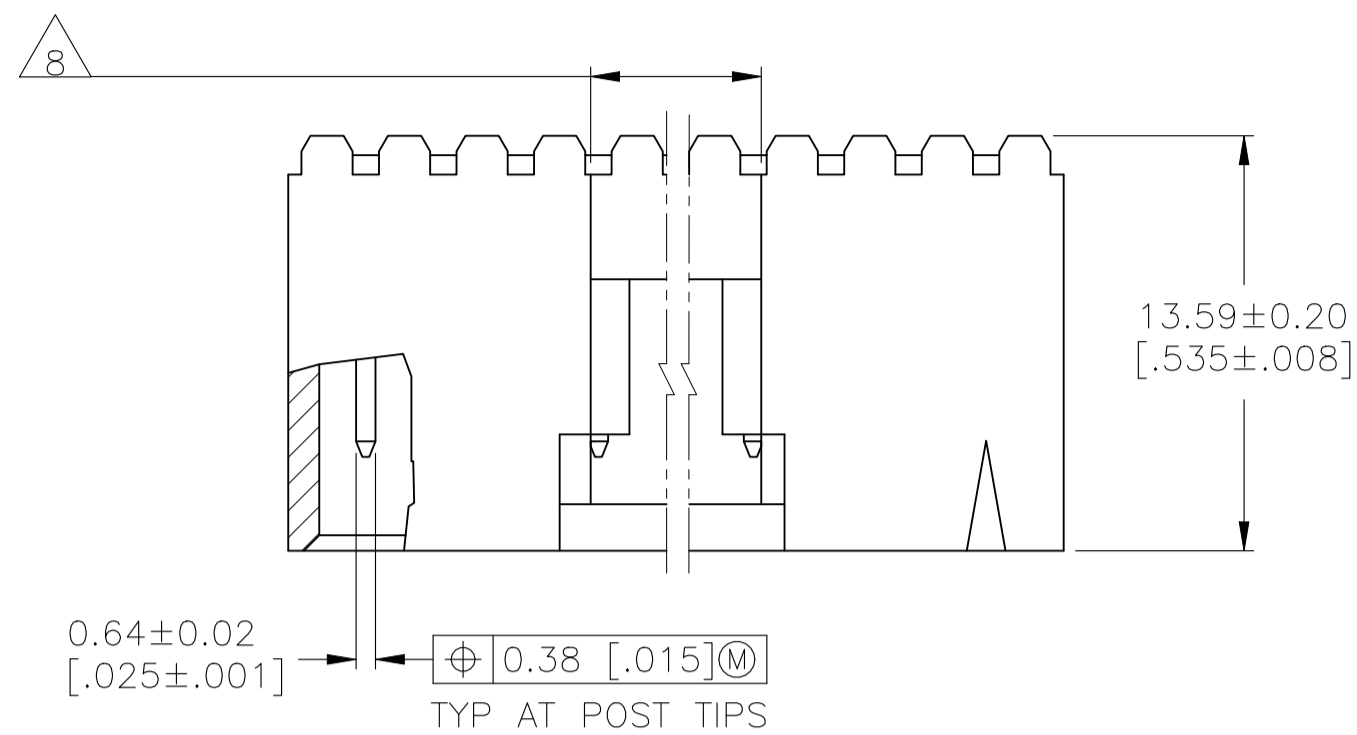
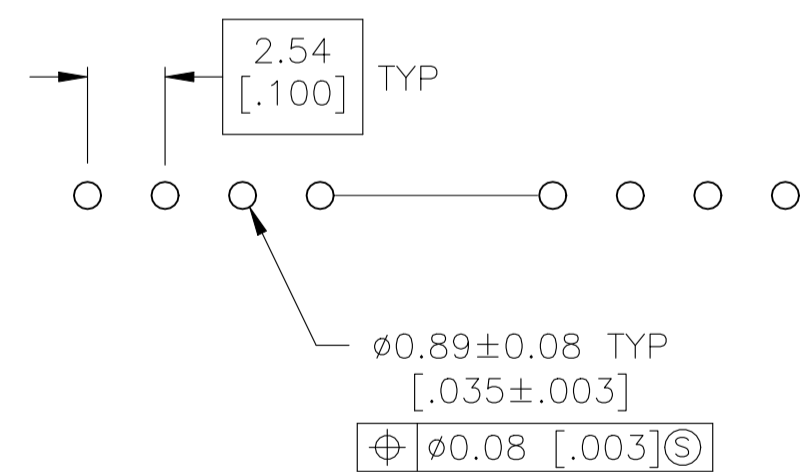


REVISIONS					
P	LTR	DESCRIPTION	DATE	DWN	APVD
	V1	REVISED PER ECN-22-177079	29SEP2022	RK	MF



SECTION X-X



## RECOMMENDED HOLE LAYOUT

- 1 .00038 [.000015] GOLD IN THE CONTACT AREA,  
.00254 [.000100] MATTE TIN-LEAD ON THE REMAINDER OF CONTACT,  
ALL OVER .00127 [.000050] NICKEL.
- 2 POINT OF MEASUREMENT FOR PLATING THICKNESS.
- 3 THE NOTED DIMENSIONS APPLY AT THE INTERSECTION  
OF THE POST AND THE HOUSING.
- 4 ON ASSEMBLIES WITH FOUR OR MORE POSITIONS,  
TWO POLARIZATION SLOTS.  
ON ASSEMBLIES WITH TWO OR THREE POSITIONS,  
ONE POLARIZATION SLOT.
- 5 .00038 [.000015] GOLD IN THE CONTACT AREA,  
.00254 [.000100] MATTE TIN ON THE REMAINDER OF CONTACT,  
ALL OVER .00127 [.000050] NICKEL.
- 6 HIGH TEMPERATURE CONFIGURATION
- 7 OBSOLETE PARTS: OBSOLETE CIS STREAMLINING PER D.RENAUD/D.SINISI
- 8 0.25 [.010] RECESS PERMISSIBLE IN THIS AREA FOR MOLD SHUT OFF

7 OBSOLETE


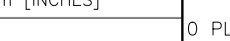
7 SUPERSEDED BY 7-103635-1

7 OBSOLETE

7 OBSOLETE

7 SUPERSEDED BY 6-103635-6

<div><div>△</div><div>6</div></div>	<div><div>△</div><div>1</div></div>	64.01 [2.520]	65.91 [2.595]	24	25	2-103635-4
	<div><div>△</div><div>1</div></div>	61.47 [2.420]	63.37 [2.495]	23	24	2-103635-3
	<div><div>△</div><div>1</div></div>	58.93 [2.320]	60.83 [2.395]	22	23	<del>2-103635-2</del>
	<div><div>△</div><div>1</div></div>	56.39 [2.220]	58.29 [2.295]	21	22	<del>2-103635-1</del>
	<div><div>△</div><div>1</div></div>	53.85 [2.120]	55.75 [2.195]	20	21	<del>2-103635-0</del>
	<div><div>△</div><div>1</div></div>	51.31 [2.020]	53.21 [2.095]	19	20	1-103635-9
	<div><div>△</div><div>1</div></div>	48.77 [1.920]	50.67 [1.995]	18	19	<del>1-103635-8</del>
	<div><div>△</div><div>1</div></div>	46.23 [1.820]	48.13 [1.895]	17	18	1-103635-7
	<div><div>△</div><div>1</div></div>	43.69 [1.720]	45.59 [1.795]	16	17	<del>1-103635-6</del>
	<div><div>△</div><div>1</div></div>	41.15 [1.620]	43.05 [1.695]	15	16	1-103635-5
	<div><div>△</div><div>1</div></div>	38.61 [1.520]	40.51 [1.595]	14	15	1-103635-4
	<div><div>△</div><div>1</div></div>	36.07 [1.420]	37.97 [1.495]	13	14	1-103635-3
	<div><div>△</div><div>1</div></div>	33.53 [1.320]	35.43 [1.395]	12	13	1-103635-2
	<div><div>△</div><div>1</div></div>	30.99 [1.220]	32.89 [1.295]	11	12	1-103635-1
	<div><div>△</div><div>1</div></div>	28.45 [1.120]	30.35 [1.195]	10	11	1-103635-0
	<div><div>△</div><div>1</div></div>	25.91 [1.020]	27.81 [1.095]	9	10	103635-9
	<div><div>△</div><div>1</div></div>	23.37 [.920]	25.27 [.995]	8	9	103635-8
	<div><div>△</div><div>1</div></div>	20.83 [.820]	22.73 [.895]	7	8	103635-7
	<div><div>△</div><div>1</div></div>	18.29 [.720]	20.19 [.795]	6	7	103635-6
	<div><div>△</div><div>1</div></div>	15.75 [.620]	17.65 [.695]	5	6	103635-5
<div><div>△</div><div>1</div></div>	13.21 [.520]	15.11 [.595]	4	5	103635-4	
<div><div>△</div><div>1</div></div>	10.67 [.420]	12.57 [.495]	3	4	103635-3	
<div><div>△</div><div>1</div></div>	8.13 [.320]	10.03 [.395]	2	3	103635-2	
<div><div>△</div><div>1</div></div>	5.59 [.220]	7.49 [.295]	1	2	103635-1	
REMARK	PLATING	C	B	A	NO. OF POSN	PART NO.

THIS DRAWING IS A CONTROLLED DOCUMENT.		DWN S. SHUEY 5-3-91 CHK L. CASTAGNA 27-3-91		 TE Connectivity	
DIMENSIONS: mm [INCHES]		TOLERANCES UNLESS OTHERWISE SPECIFIED: 0 PLC ± - 1 PLC ± - 2 PLC ± - 3 PLC ± .005 4 PLC ± - ANGLES ± -		NAME HDRASSY,RTANG,SLGEROW 2.54[.100]C/-.0.64[.025]SQPST WITHPLZN&LATCHING,AMPMODUMTE	
		PRODUCT SPEC 108-25034 APPLICATION SPEC 114-25026		SIZE A1 00779	
MATERIAL HOUSING: BLACK INSIDE: RETARDANT LCP COLOR: BLACK CONTACTS: BRASS		WEIGHT -		DRAWING NO C-103635	
SEE TABLE		CUSTOMER DRAWING		RESTRICTED TO -	
				SCALE 4:1 SHEET 1 OF 2 REV V1	

8

7

6

5

4

3

2

1

THIS DRAWING IS UNPUBLISHED.

RELEASED FOR PUBLICATION

ALL RIGHTS RESERVED.

REVISIONS

P	LTR	DESCRIPTION	DATE	DWN	APVD
-	-	SEE SHEET 1	-	-	-

7

OBSOLETE

7

OBSOLETE

7

OBSOLETE

<div><div></div><div>6</div></div>	<div><div></div><div>5</div></div>	64.01 [2.520]	65.91 [2.595]	24	25	7-103635-4
<div><div></div><div>6</div></div>	<div><div></div><div>5</div></div>	61.47 [2.420]	63.37 [2.495]	23	24	7-103635-3
<div><div></div><div>6</div></div>	<div><div></div><div>5</div></div>	58.93 [2.320]	60.83 [2.395]	22	23	<del>7-103635-2</del>
<div><div></div><div>6</div></div>	<div><div></div><div>5</div></div>	56.39 [2.220]	58.29 [2.295]	21	22	7-103635-1
<div><div></div><div>6</div></div>	<div><div></div><div>5</div></div>	53.85 [2.120]	55.75 [2.195]	20	21	<del>7-103635-0</del>
<div><div></div><div>6</div></div>	<div><div></div><div>5</div></div>	51.31 [2.020]	53.21 [2.095]	19	20	6-103635-9
<div><div></div><div>6</div></div>	<div><div></div><div>5</div></div>	48.77 [1.920]	50.67 [1.995]	18	19	<del>6-103635-8</del>
<div><div></div><div>6</div></div>	<div><div></div><div>5</div></div>	46.23 [1.820]	48.13 [1.895]	17	18	6-103635-7
<div><div></div><div>6</div></div>	<div><div></div><div>5</div></div>	43.69 [1.720]	45.59 [1.795]	16	17	6-103635-6
<div><div></div><div>6</div></div>	<div><div></div><div>5</div></div>	41.15 [1.620]	43.05 [1.695]	15	16	6-103635-5
<div><div></div><div>6</div></div>	<div><div></div><div>5</div></div>	38.61 [1.520]	40.51 [1.595]	14	15	6-103635-4
<div><div></div><div>6</div></div>	<div><div></div><div>5</div></div>	36.07 [1.420]	37.97 [1.495]	13	14	6-103635-3
<div><div></div><div>6</div></div>	<div><div></div><div>5</div></div>	33.53 [1.320]	35.43 [1.395]	12	13	6-103635-2
<div><div></div><div>6</div></div>	<div><div></div><div>5</div></div>	30.99 [1.220]	32.89 [1.295]	11	12	6-103635-1
<div><div></div><div>6</div></div>	<div><div></div><div>5</div></div>	28.45 [1.120]	30.35 [1.195]	10	11	6-103635-0
<div><div></div><div>6</div></div>	<div><div></div><div>5</div></div>	25.91 [1.020]	27.81 [1.095]	9	10	5-103635-9
<div><div></div><div>6</div></div>	<div><div></div><div>5</div></div>	23.37 [.920]	25.27 [.995]	8	9	5-103635-8
<div><div></div><div>6</div></div>	<div><div></div><div>5</div></div>	20.83 [.820]	22.73 [.895]	7	8	5-103635-7
<div><div></div><div>6</div></div>	<div><div></div><div>5</div></div>	18.29 [.720]	20.19 [.795]	6	7	5-103635-6
<div><div></div><div>6</div></div>	<div><div></div><div>5</div></div>	15.75 [.620]	17.65 [.695]	5	6	5-103635-5
<div><div></div><div>6</div></div>	<div><div></div><div>5</div></div>	13.21 [.520]	15.11 [.595]	4	5	5-103635-4
<div><div></div><div>6</div></div>	<div><div></div><div>5</div></div>	10.67 [.420]	12.57 [.495]	3	4	5-103635-3
<div><div></div><div>6</div></div>	<div><div></div><div>5</div></div>	8.13 [.320]	10.03 [.395]	2	3	5-103635-2
<div><div></div><div>6</div></div>	<div><div></div><div>5</div></div>	5.59 [.220]	7.49 [.295]	1	2	5-103635-1
REMARKS	PLATING	C	B	A	NO. OF POSN	PART NO.

THIS DRAWING IS A CONTROLLED DOCUMENT.

DIMENSIONS:  
mm [INCHES]

0. PLC  
1. PLC  
2. PLC  
3. PLC  
4. PLC

±  
±  
±  
±  
±

-  
-  
-  
-  
-

ANGLES

± - ±

MATERIAL

HOLDING -  
FLAME RETARDANT  
CERAM - BLACK  
CONTACTS - BRASS

TOLERANCES UNLESS  
OTHERWISE SPECIFIED:

SEE TABLE

DWN  
S. SHUEY  
CHK  
L. CASTAGNA  
APVD  
L. CASTAGNA

5-3-91  
27-3-91  
27-3-91

PRODUCT SPEC  
108-25034  
APPLICATION SPEC  
114-25026

WEIGHT  
-

CUSTOMER DRAWING

SCALE 1:1

SHEET 2 OF 2

REV V1

DWN  
S. SHUEY  
CHK  
L. CASTAGNA  
APVD  
L. CASTAGNA

5-3-91  
27-3-91  
27-3-91

NAME  
HDRASSY, RTANG, SGLEROW  
2.54[.100]C/L, 0.64[.025]SQPST  
WITH PLZN&LATCHING, AMPMODUMTE

SIZE  
A1

CAGE CODE  
00779

DRAWING NO  
103635

RESTRICTED TO  
-

4805 (1/15)

# Mouser Electronics

Authorized Distributor

Click to View Pricing, Inventory, Delivery & Lifecycle Information:

[TE Connectivity:](#)

[103635-2](#)