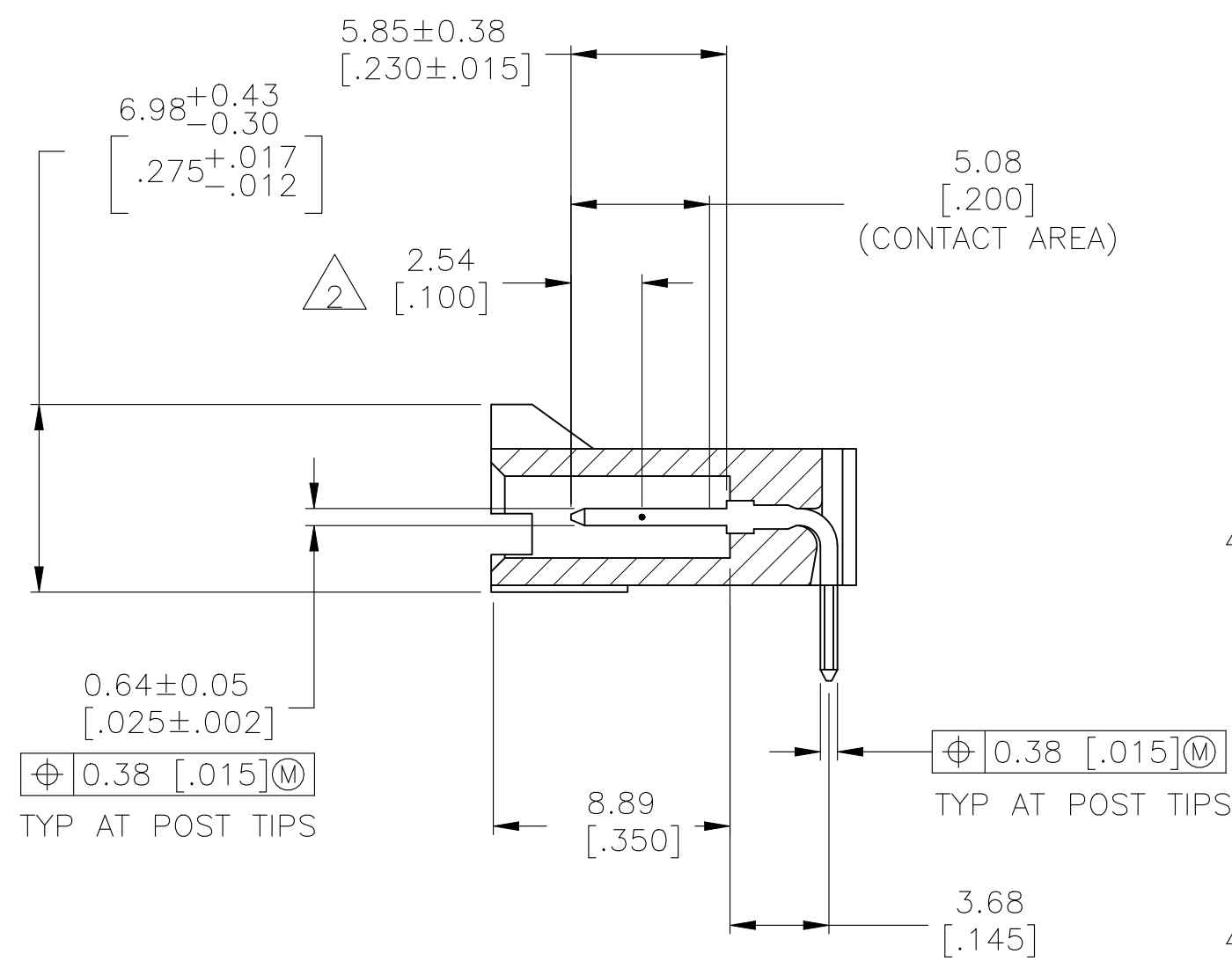
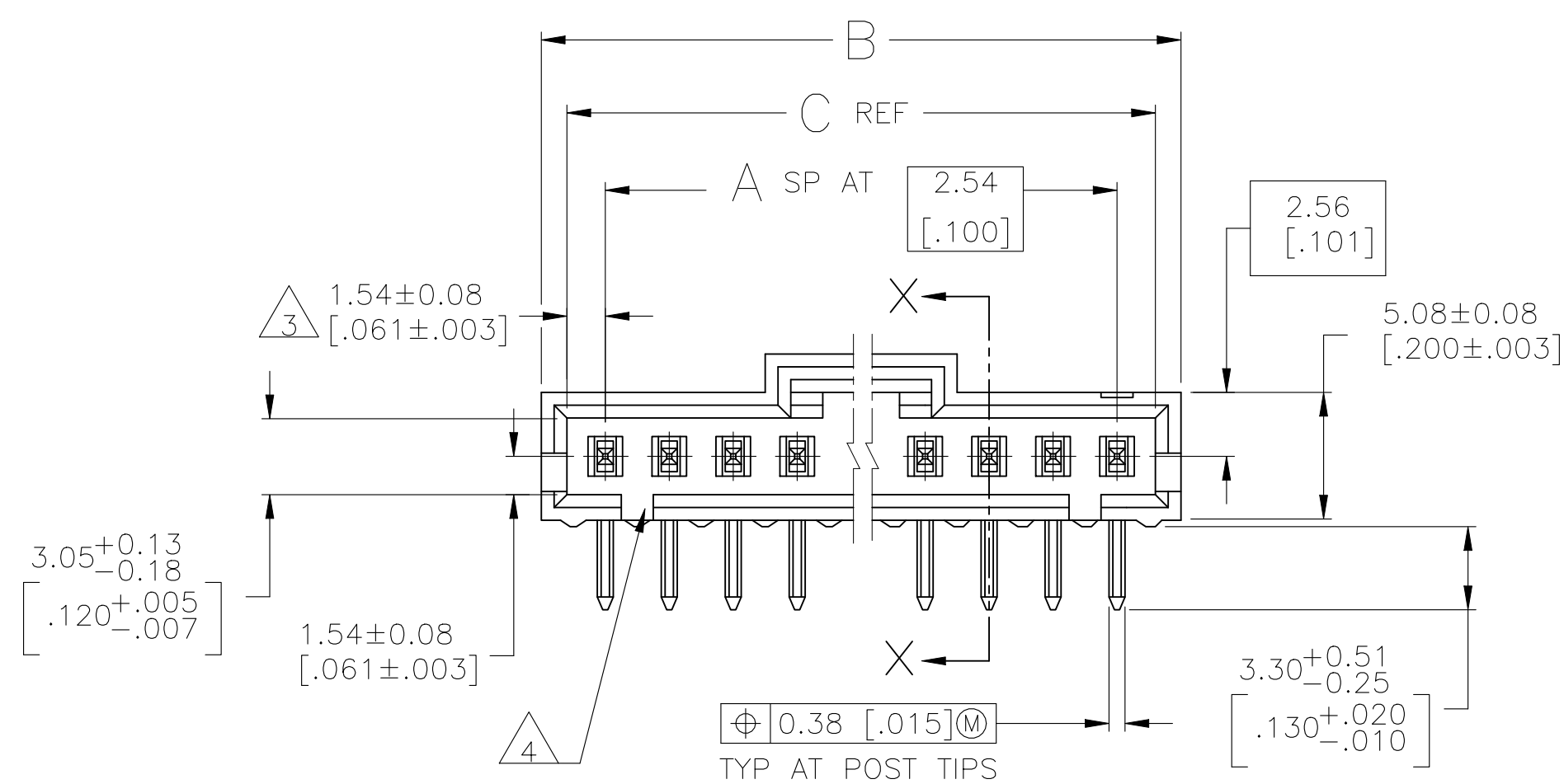
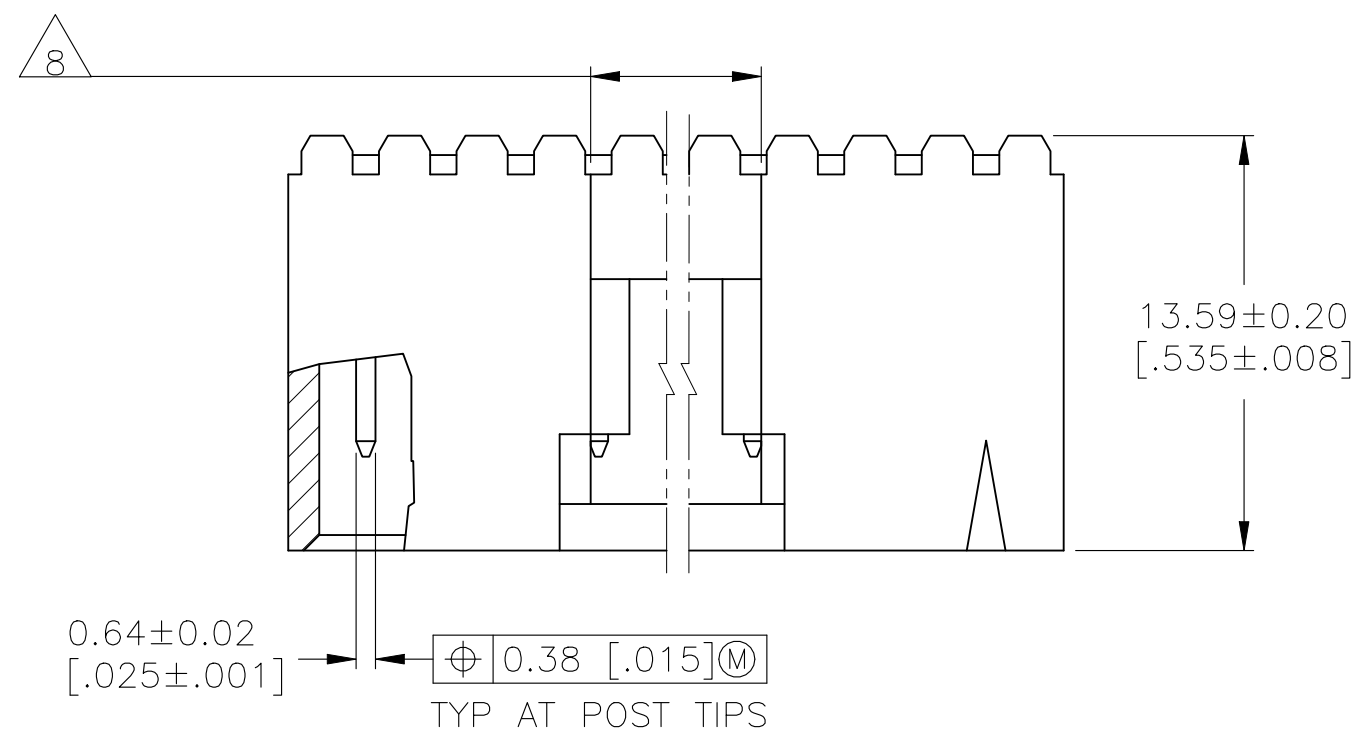
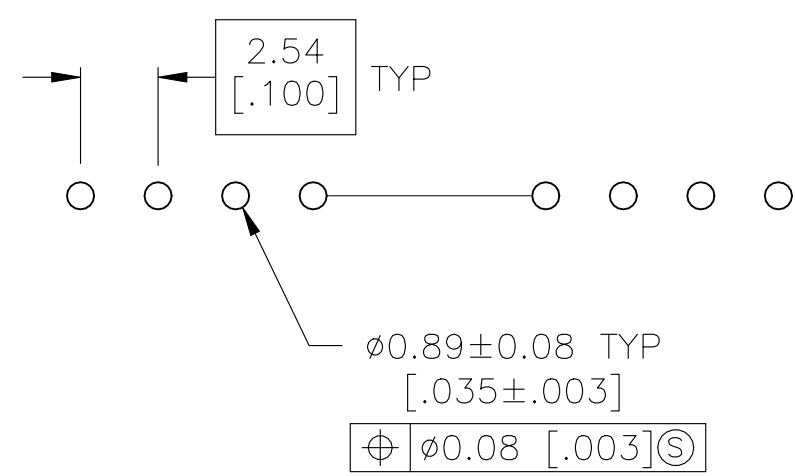


REVISIONS					
P	LTR	DESCRIPTION	DATE	DWN	APVD
	V1	REVISED PER ECN-22-177079	29SEP2022	RK	MF



SECTION X-X





## RECOMMENDED HOLE LAYOUT

- 1 .00038 [.000015] GOLD IN THE CONTACT AREA,  
.00254 [.000100] MATTE TIN-LEAD ON THE REMAINDER OF CONTACT,  
ALL OVER .00127 [.000050] NICKEL.
- 2 POINT OF MEASUREMENT FOR PLATING THICKNESS.
- 3 THE NOTED DIMENSIONS APPLY AT THE INTERSECTION  
OF THE POST AND THE HOUSING.
- 4 ON ASSEMBLIES WITH FOUR OR MORE POSITIONS,  
TWO POLARIZATION SLOTS.  
ON ASSEMBLIES WITH TWO OR THREE POSITIONS,  
ONE POLARIZATION SLOT.
- 5 .00038 [.000015] GOLD IN THE CONTACT AREA,  
.00254 [.000100] MATTE TIN ON THE REMAINDER OF CONTACT,  
ALL OVER .00127 [.000050] NICKEL.
- 6 HIGH TEMPERATURE CONFIGURATION
- 7 OBSOLETE PARTS: OBSOLETE CIS STREAMLINING PER D.RENAUD/D.SINISI
- 8 0.25 [.010] RECESS PERMISSIBLE IN THIS AREA FOR MOLD SHUT OFF

The diagram illustrates the relationship between three standards:

- Standard 7-103635-1:** Labeled "SUPERSEDED BY 7-103635-1".
- Standard 7-103635-2:** Labeled "OBSOLETE".
- Standard 7-103635-3:** Labeled "OBSOLETE".

<div><div>△</div><div>6</div></div>	<div><div>△</div><div>1</div></div>	64.01 [2.520]	65.91 [2.595]	24	25	2-103635-4
	<div><div>△</div><div>1</div></div>	61.47 [2.420]	63.37 [2.495]	23	24	2-103635-3
	<div><div>△</div><div>1</div></div>	58.93 [2.320]	60.83 [2.395]	22	23	<del>2-103635-2</del>
	<div><div>△</div><div>1</div></div>	56.39 [2.220]	58.29 [2.295]	21	22	<del>2-103635-1</del>
	<div><div>△</div><div>1</div></div>	53.85 [2.120]	55.75 [2.195]	20	21	<del>2-103635-0</del>
	<div><div>△</div><div>1</div></div>	51.31 [2.020]	53.21 [2.095]	19	20	1-103635-9
	<div><div>△</div><div>1</div></div>	48.77 [1.920]	50.67 [1.995]	18	19	<del>1-103635-8</del>
	<div><div>△</div><div>1</div></div>	46.23 [1.820]	48.13 [1.895]	17	18	1-103635-7
	<div><div>△</div><div>1</div></div>	43.69 [1.720]	45.59 [1.795]	16	17	<del>1-103635-6</del>
	<div><div>△</div><div>1</div></div>	41.15 [1.620]	43.05 [1.695]	15	16	1-103635-5
	<div><div>△</div><div>1</div></div>	38.61 [1.520]	40.51 [1.595]	14	15	1-103635-4
	<div><div>△</div><div>1</div></div>	36.07 [1.420]	37.97 [1.495]	13	14	1-103635-3
	<div><div>△</div><div>1</div></div>	33.53 [1.320]	35.43 [1.395]	12	13	1-103635-2
	<div><div>△</div><div>1</div></div>	30.99 [1.220]	32.89 [1.295]	11	12	1-103635-1
	<div><div>△</div><div>1</div></div>	28.45 [1.120]	30.35 [1.195]	10	11	1-103635-0
	<div><div>△</div><div>1</div></div>	25.91 [1.020]	27.81 [1.095]	9	10	103635-9
	<div><div>△</div><div>1</div></div>	23.37 [.920]	25.27 [.995]	8	9	103635-8
	<div><div>△</div><div>1</div></div>	20.83 [.820]	22.73 [.895]	7	8	103635-7
	<div><div>△</div><div>1</div></div>	18.29 [.720]	20.19 [.795]	6	7	103635-6
	<div><div>△</div><div>1</div></div>	15.75 [.620]	17.65 [.695]	5	6	103635-5
<div><div>△</div><div>1</div></div>	13.21 [.520]	15.11 [.595]	4	5	103635-4	
<div><div>△</div><div>1</div></div>	10.67 [.420]	12.57 [.495]	3	4	103635-3	
<div><div>△</div><div>1</div></div>	8.13 [.320]	10.03 [.395]	2	3	103635-2	
<div><div>△</div><div>1</div></div>	5.59 [.220]	7.49 [.295]	1	2	103635-1	
REMARK	PLATING	C	B	A	NO. OF POSN	PART NO.

THIS DRAWING IS A CONTROLLED DOCUMENT.		DWG. 5-3-91 CHK. S. SHUEY 27-3-91		 TE Connectivity	
DIMENSIONS: mm [INCHES]		TOLERANCES UNLESS OTHERWISE SPECIFIED: 0 PLC ± 1 PLC ± 2 PLC ± 3 PLC ±.005 4 PLC ± ANGLES ±		NAME HDRASSY,RTANG,SGLEROW 2.54[.100]C/L.0.64[.025]SOPST WITHPLZN&LATCHING,AMPMODULETE	
		PRODUCT SPEC 108-25034 APPLICATION SPEC 114-25026		SIZE CAGE CODE DRAWING NO A1 00779 C-103635	
MATERIAL HOUSING: FLAME RETARDANT LCP COLOR: BLACK CONTACTS: BRASS		FINISH SEE TABLE		RESTRICTED TO —	
CUSTOMER DRAWING					
SCALE: 4:1				SHEET 1 OF 2 REV V	

8

7

6

5

4

3

2

1

THIS DRAWING IS UNPUBLISHED.

RELEASED FOR PUBLICATION

ALL RIGHTS RESERVED.

REVISIONS

P	LTR	DESCRIPTION	DATE	DWN	APVD
-	-	SEE SHEET 1	-	-	-

7

OBSOLETE

7

OBSOLETE

7

OBSOLETE

<div>6</div>	<div>5</div>	64.01 [2.520]	65.91 [2.595]	24	25	7-103635-4
<div>6</div>	<div>5</div>	61.47 [2.420]	63.37 [2.495]	23	24	7-103635-3
<div>6</div>	<div>5</div>	58.93 [2.320]	60.83 [2.395]	22	23	7-103635-2
<div>6</div>	<div>5</div>	56.39 [2.220]	58.29 [2.295]	21	22	7-103635-1
<div>6</div>	<div>5</div>	53.85 [2.120]	55.75 [2.195]	20	21	7-103635-0
<div>6</div>	<div>5</div>	51.31 [2.020]	53.21 [2.095]	19	20	6-103635-9
<div>6</div>	<div>5</div>	48.77 [1.920]	50.67 [1.995]	18	19	6-103635-8
<div>6</div>	<div>5</div>	46.23 [1.820]	48.13 [1.895]	17	18	6-103635-7
<div>6</div>	<div>5</div>	43.69 [1.720]	45.59 [1.795]	16	17	6-103635-6
<div>6</div>	<div>5</div>	41.15 [1.620]	43.05 [1.695]	15	16	6-103635-5
<div>6</div>	<div>5</div>	38.61 [1.520]	40.51 [1.595]	14	15	6-103635-4
<div>6</div>	<div>5</div>	36.07 [1.420]	37.97 [1.495]	13	14	6-103635-3
<div>6</div>	<div>5</div>	33.53 [1.320]	35.43 [1.395]	12	13	6-103635-2
<div>6</div>	<div>5</div>	30.99 [1.220]	32.89 [1.295]	11	12	6-103635-1
<div>6</div>	<div>5</div>	28.45 [1.120]	30.35 [1.195]	10	11	6-103635-0
<div>6</div>	<div>5</div>	25.91 [1.020]	27.81 [1.095]	9	10	5-103635-9
<div>6</div>	<div>5</div>	23.37 [.920]	25.27 [.995]	8	9	5-103635-8
<div>6</div>	<div>5</div>	20.83 [.820]	22.73 [.895]	7	8	5-103635-7
<div>6</div>	<div>5</div>	18.29 [.720]	20.19 [.795]	6	7	5-103635-6
<div>6</div>	<div>5</div>	15.75 [.620]	17.65 [.695]	5	6	5-103635-5
<div>6</div>	<div>5</div>	13.21 [.520]	15.11 [.595]	4	5	5-103635-4
<div>6</div>	<div>5</div>	10.67 [.420]	12.57 [.495]	3	4	5-103635-3
<div>6</div>	<div>5</div>	8.13 [.320]	10.03 [.395]	2	3	5-103635-2
<div>6</div>	<div>5</div>	5.59 [.220]	7.49 [.295]	1	2	5-103635-1
REMARKS	PLATING	C	B	A	NO. OF POSN	PART NO.

THIS DRAWING IS A CONTROLLED DOCUMENT.

DIMENSIONS:  
mm [INCHES]

TOLERANCES UNLESS  
OTHERWISE SPECIFIED:

0. PLC ± .01

1. PLC ± .01

2. PLC ± .01

3. PLC ± .01

4. PLC ± .01

ANGLES ± .01

MATERIAL:  
HOLDING -  
FLAME RETARDANT  
CERAM - BLACK  
CONTACTS - BRASS

FINISH  
SEE TABLE

DWN  
S. SHUEY  
27-3-91

CHK  
L. CASTAGNA  
27-3-91

APVD  
L. CASTAGNA  
27-3-91

PRODUCT SPEC  
108-25034

APPLICATION SPEC  
114-25026

WEIGHT  
—

CUSTOMER DRAWING

SCALE 1:1

SHEET 2 OF 2

REV V1

DWN  
S. SHUEY  
5-3-91

CHK  
L. CASTAGNA  
27-3-91

APVD  
L. CASTAGNA  
27-3-91

TE Connectivity

NAME  
HDRASSY, RTANG, SGLEROW  
2.54[.100]C/L, 0.64[.025]SQPST  
WITH PLZN&LATCHING, AMPMODUM TE

SIZE  
A1

CAGE CODE  
00779

DRAWING NO  
103635

RESTRICTED TO  
—

4805 (1/15)

# Mouser Electronics

Authorized Distributor

Click to View Pricing, Inventory, Delivery & Lifecycle Information:

[TE Connectivity:](#)

[6-103635-1](#)