

REVISIONS					
P	LTR	DESCRIPTION	DATE	DWN	APVD
	V	REVISED PER ECO-17-002584	08APR2017	BDA	MM
	W	REVISED PER ECO-20-001323	29MAY2020	SM	JO

D

D

C

C

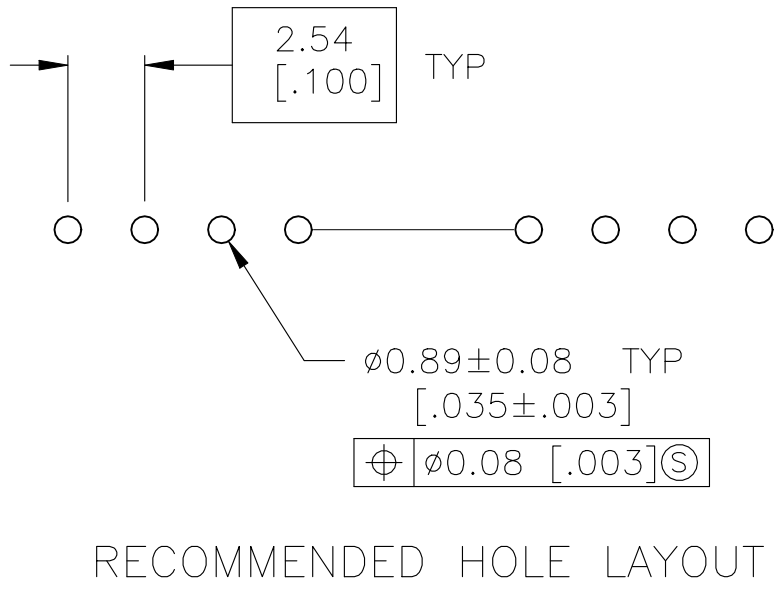
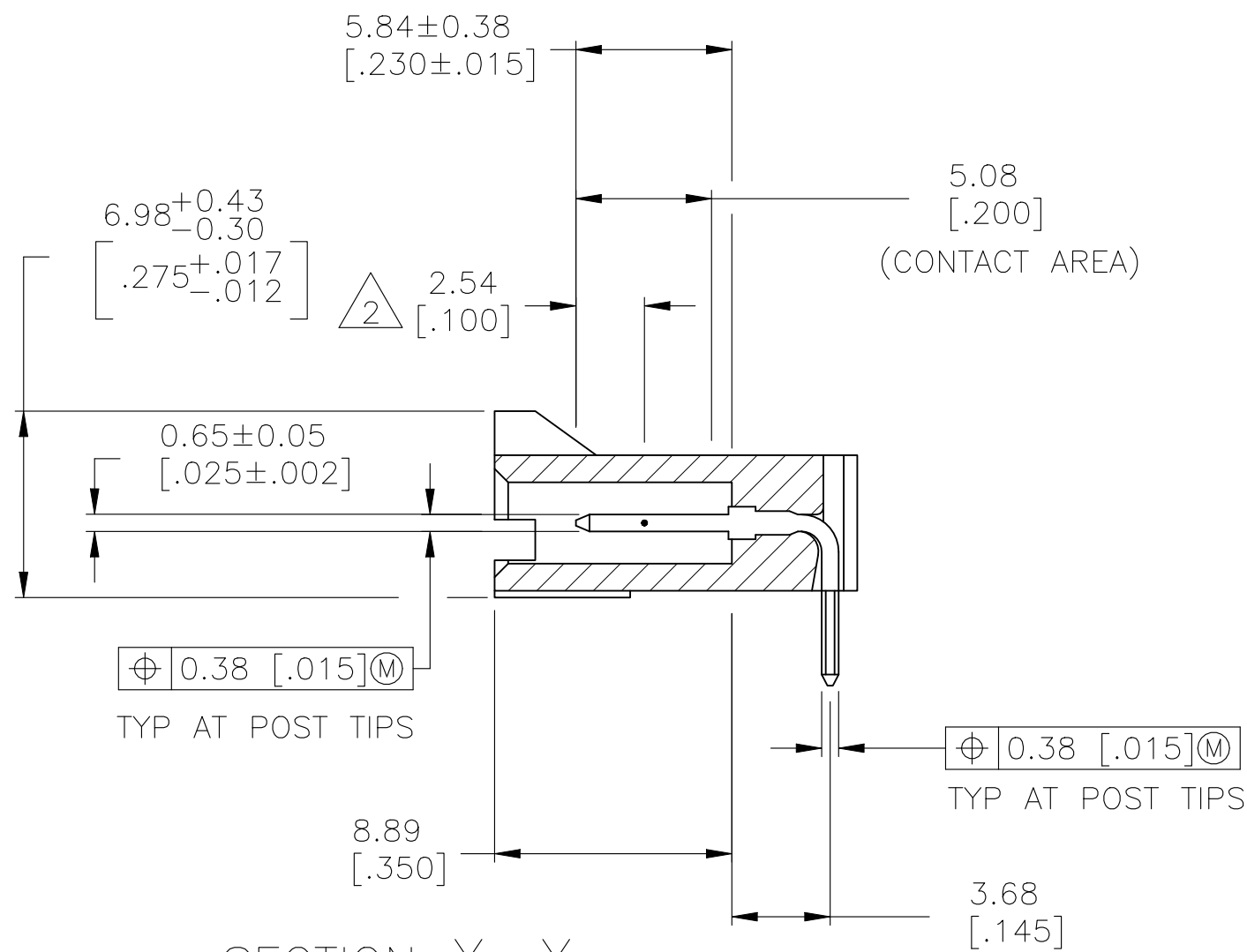
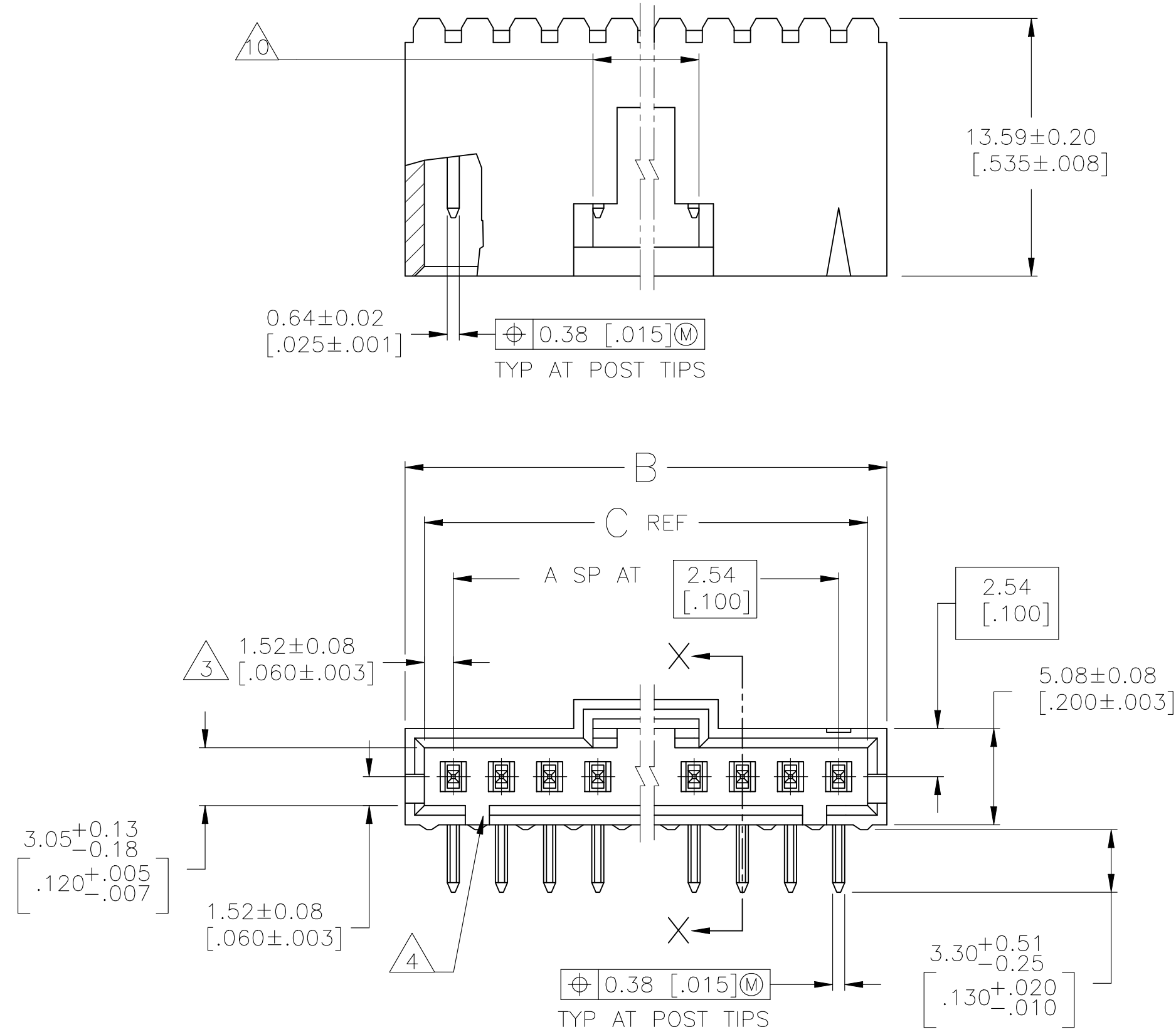
B

B

A

A

- 1
- .000100 BRIGHT TIN-LEAD OVER .000050 NICKEL.
- 2
- POINT OF MEASUREMENT FOR PLATING THICKNESS.
- 3
- THE NOTED DIMENSIONS APPLY AT THE INTERSECTION OF THE POST AND THE HOUSING.
- 4
- ON ASSEMBLIES WITH FOUR OR MORE POSITIONS, TWO POLARIZATION SLOTS.  
ON ASSEMBLIES WITH TWO OR THREE POSITIONS, ONE POLARIZATION SLOT.
- 5
- .000100 BRIGHT TIN OVER .000050 NICKEL.
- 6
- PRELIMINARY PART - NOT RELEASED FOR PRODUCTION.
- 7
- .000100 MATTE TIN OVER .000050 NICKEL.
- 8
- HIGH TEMPERATURE CONFIGURATION
- 9
- OBSOLETE PARTS: OBSOLETE CIS STREAMLINING PER D.RENAUD/D.SINISI
- 10
- 0.25 [.010] RECESS PERMISSIBLE IN THIS AREA FOR MOLD SHUT OFF



OBSOLETE  
9

OBSOLETE  
9

8	7	64.01 [2.520]	65.91 [2.595]	24	25	7-103634-4
8	7	61.47 [2.420]	63.37 [2.495]	23	24	7-103634-3
8	7	58.93 [2.320]	60.83 [2.395]	22	23	7-103634-2
8	7	56.39 [2.220]	58.29 [2.295]	21	22	7-103634-1
8	7	53.85 [2.120]	55.75 [2.195]	20	21	7-103634-0
8	7	51.31 [2.020]	53.21 [2.095]	19	20	6-103634-9
8	7	48.77 [1.920]	50.67 [1.995]	18	19	6-103634-8
8	7	46.23 [1.820]	48.13 [1.895]	17	18	6-103634-7
8	7	43.69 [1.720]	45.59 [1.795]	16	17	6-103634-6
8	7	41.15 [1.620]	43.05 [1.695]	15	16	6-103634-5
8	7	38.61 [1.520]	40.51 [1.595]	14	15	6-103634-4
8	7	36.07 [1.420]	37.97 [1.495]	13	14	6-103634-3
8	7	33.53 [1.320]	35.43 [1.395]	12	13	6-103634-2
8	7	30.99 [1.220]	32.89 [1.295]	11	12	6-103634-1
8	7	28.45 [1.120]	30.35 [1.195]	10	11	6-103634-0
8	7	25.91 [1.020]	27.81 [1.095]	9	10	5-103634-9
8	7	23.37 [.920]	25.27 [.995]	8	9	5-103634-8
8	7	20.83 [.820]	22.73 [.895]	7	8	5-103634-7
8	7	18.29 [.720]	20.19 [.795]	6	7	5-103634-6
8	7	15.75 [.620]	17.65 [.695]	5	6	5-103634-5
8	7	13.21 [.520]	15.11 [.595]	4	5	5-103634-4
8	7	10.67 [.420]	12.57 [.495]	3	4	5-103634-3
8	7	8.13 [.320]	10.03 [.395]	2	3	5-103634-2
8	7	5.59 [.220]	7.49 [.295]	1	2	5-103634-1
REMARKS	PLATING	C	B	A	NO. OF POSN	PART NO.

9 SUPERCEDED BY 7-103634-4

OBSOLETE  
9

9 SUPERCEDED BY 6-103634-6

8	7	30.99 [1.220]	32.89 [1.295]	11	12	3-103634-4
8	7	25.91 [1.020]	27.81 [1.095]	9	10	3-103634-3
8	7	23.37 [.920]	25.27 [.995]	8	9	3-103634-2
8	7	18.29 [.720]	20.19 [.795]	6	7	3-103634-1
8	7	15.75 [.620]	17.65 [.695]	5	6	3-103634-0
8	7	5.59 [.220]	7.49 [.295]	1	2	2-103634-9
8	7	41.15 [1.620]	43.05 [1.695]	15	16	2-103634-8
8	7	13.21 [.520]	15.11 [.595]	4	5	2-103634-7
8	7	10.67 [.420]	12.57 [.495]	3	4	2-103634-6
8	7	8.13 [.320]	10.03 [.395]	2	3	2-103634-5
8	7	64.01 [2.520]	65.91 [2.595]	24	25	2-103634-4
8	7	61.47 [2.420]	63.37 [2.495]	23	24	2-103634-3
8	7	58.93 [2.320]	60.83 [2.395]	22	23	2-103634-2
8	7	56.39 [2.220]	58.29 [2.295]	21	22	2-103634-1
8	7	53.85 [2.120]	55.75 [2.195]	20	21	2-103634-0
8	7	51.31 [2.020]	53.21 [2.095]	19	20	1-103634-9
8	7	48.77 [1.920]	50.67 [1.995]	18	19	1-103634-8
8	7	46.23 [1.820]	48.13 [1.895]	17	18	1-103634-7
8	7	43.69 [1.720]	45.59 [1.795]	16	17	1-103634-6
8	7	41.15 [1.620]	43.05 [1.695]	15	16	1-103634-5
8	7	38.61 [1.520]	40.51 [1.595]	14	15	1-103634-4
8	7	36.07 [1.420]	37.97 [1.495]	13	14	1-103634-3
8	7	33.53 [1.320]	35.43 [1.395]	12	13	1-103634-2
8	7	30.99 [1.220]	32.89 [1.295]	11	12	1-103634-1
8	7	28.45 [1.120]	30.35 [1.195]	10	11	1-103634-0
8	7	25.91 [1.020]	27.81 [1.095]	9	10	103634-9
8	7	23.37 [.920]	25.27 [.995]	8	9	103634-8
8	7	20.83 [.820]	22.73 [.895]	7	8	103634-7
8	7	18.29 [.720]	20.19 [.795]	6	7	103634-6
8	7	15.75 [.620]	17.65 [.695]	5	6	103634-5
8	7	13.21 [.520]	15.11 [.595]	4	5	103634-4
8	7	10.67 [.420]	12.57 [.495]	3	4	103634-3
8	7	8.13 [.320]	10.03 [.395]	2	3	103634-2
8	7	5.59 [.220]	7.49 [.295]	1	2	103634-1
REMARK	PLATING	C	B	A	NO. OF POSN	PART NO.

THIS DRAWING IS A CONTROLLED DOCUMENT.

DIMENSIONS:  
mm [INCHES]

0. PLC  
1. PLC  
2. PLC  
3. PLC  
4. PLC  
ANGLES

± -  
± -  
± -  
± -  
± -  
± -

MATERIAL  
HOUSING: FLAME RETARDANT  
LOF,COLOR: BLACK  
CONTACTS: BRASS

FINISH  
SEE TABLE

DWN  
S. SHUEY  
3-5-91

CHK  
L. CASTAGNA  
3-27-91

APVD  
L. CASTAGNA  
3-27-91

NAME

PRODUCT SPEC  
108-25034

APPLICATION SPEC  
114-25026

WEIGHT  
-

CUSTOMER DRAWING

TE Connectivity

HDRASSY,RTANGLE, SINGLEROW,  
2.54[.100]C/L0.64[.025]SQPST,  
WITHPLZN&LATCHING,AMPMODULE

SIZE  
A1

CAGE CODE  
00779

DRAWING NO.  
103634

RESTRICTED TO  
-

SCALE  
4:1

SHEET  
1

OF  
1

REV  
W

4805 (1/15)

# Mouser Electronics

Authorized Distributor

Click to View Pricing, Inventory, Delivery & Lifecycle Information:

[TE Connectivity:](#)

[103634-4](#)