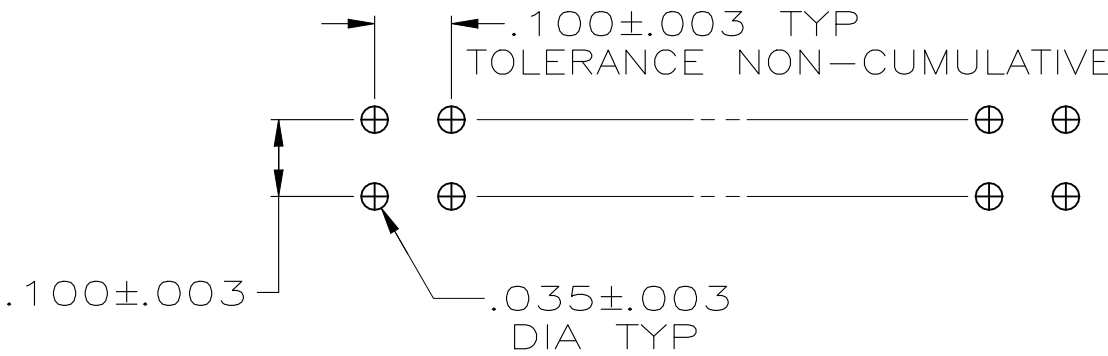
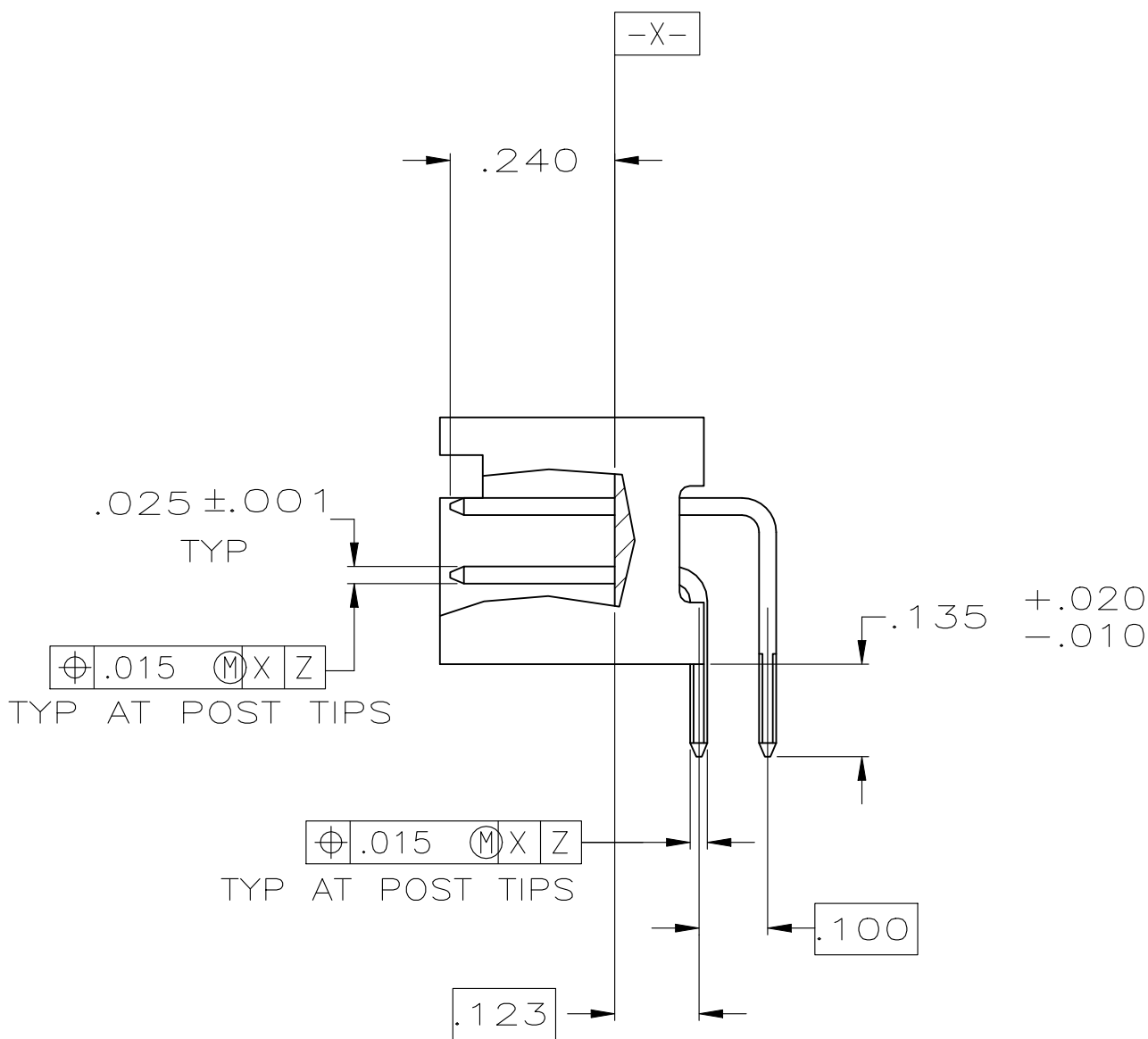
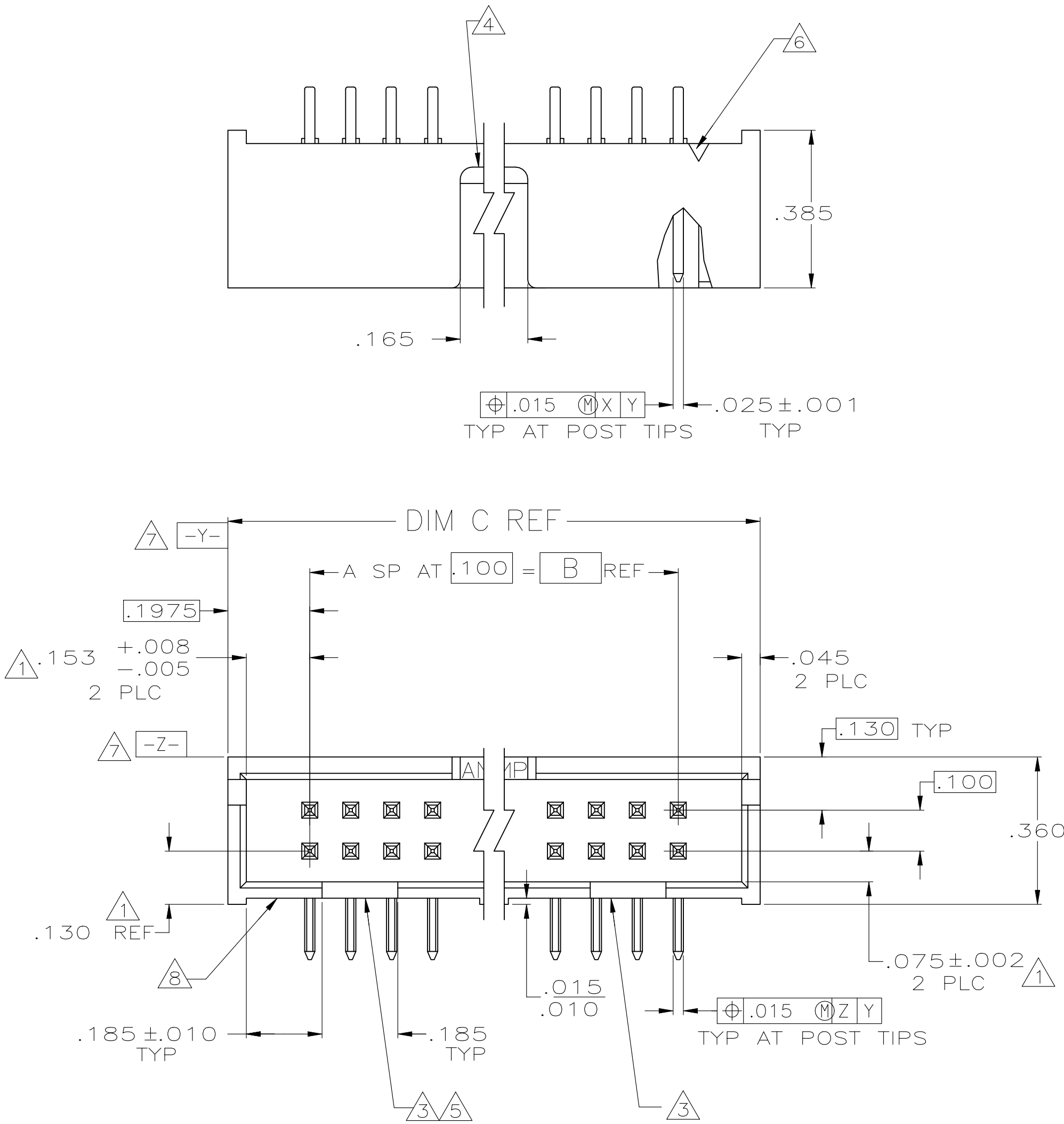


- 1 THE NOTED DIMENSIONS APPLY AT THE INTERSECTION OF THE POST AND HOUSING
- 2 POSTS: GOLD FLASH OVER PALLADIUM-NICKEL PLATE, .000015 MIN TOTAL ON THE MATING SURFACES, .000100 MIN TIN-LEAD PLATE ON THE SOLDER-TAILS, .000050 MIN NICKEL UNDERPLATE ON THE ENTIRE POST.  
-OR-  
.000015 MIN GOLD PLATE ON THE MATING SURFACES, .000100 MIN TIN-LEAD PLATE ON THE SOLDER-TAILS, .000050 MIN NICKEL UNDERPLATE ON THE ENTIRE POST.
- 3 DOUBLE BAR POLARIZATION
- 4 CENTER POLARIZATION SLOT
- 5 FOR 10 POSN ASSEMBLY, SLOT OMITTED WHERE INDICATED
- 6 NUMBER 1 POSITION INDICATOR.
- 7 DATUMS -Y- AND -Z- APPLY AT THE BASE OF THE SHROUD WALL.
- 8 OPTIONAL AMP IDENTIFICATION NUMBER (DATE CODE).  
LOCATION APPROXIMATELY WHERE SHOWN.



RECOMMENDED HOLE LAYOUT  
FOR MANUAL INSERTION

OBSOLETE	3.300	2.900	29	60	1-103310-2
OBSOLETE	3.100	2.700	27	56	1-103310-1
	2.800	2.400	24	50	1-103310-0
OBSOLETE	2.500	2.100	21	44	103310-9
	2.300	1.900	19	40	103310-8
	2.000	1.600	16	34	103310-7
	1.600	1.200	12	26	103310-6
	1.300	.900	9	20	103310-5
OBSOLETE	1.200	.800	8	18	103310-4
	1.100	.700	7	16	103310-3
	1.000	.600	6	14	103310-2
	.800	.400	4	10	103310-1
C	B	A	NO OF POSN	ASSEMBLY PART NUMBER	

THIS DRAWING IS A CONTROLLED DOCUMENT.		DWN H. MOLL 8-27-87	TE Connectivity	
DIMENSIONS: INCHES		CHK A. MAYER 9-4-87	NAME	
TOLERANCES UNLESS OTHERWISE SPECIFIED:		APVD R. FLICKER 9-4-87	PRODUCT SPEC	
0. PLC ± .005		108-40018		
1. PLC ± .005		APPLICATION SPEC		
2. PLC ± .005		SIZE		
3. PLC ± .005		CAGE CODE		
4. PLC ± .005		DRAWING NO		
ANGLES		RESTRICTED TO		
FINISH		WEIGHT		
MATERIAL: GLASS FILLED NYLON OR PBT, BLACK, UL 94V-0 RATED POSTS: BRASS		0.000000		
1		A1 00779 103310		
CUSTOMER DRAWING		SCALE 4:1 SHEET 1 OF 1 REV N1		

# Mouser Electronics

Authorized Distributor

Click to View Pricing, Inventory, Delivery & Lifecycle Information:

[TE Connectivity:](#)

[103310-6](#)