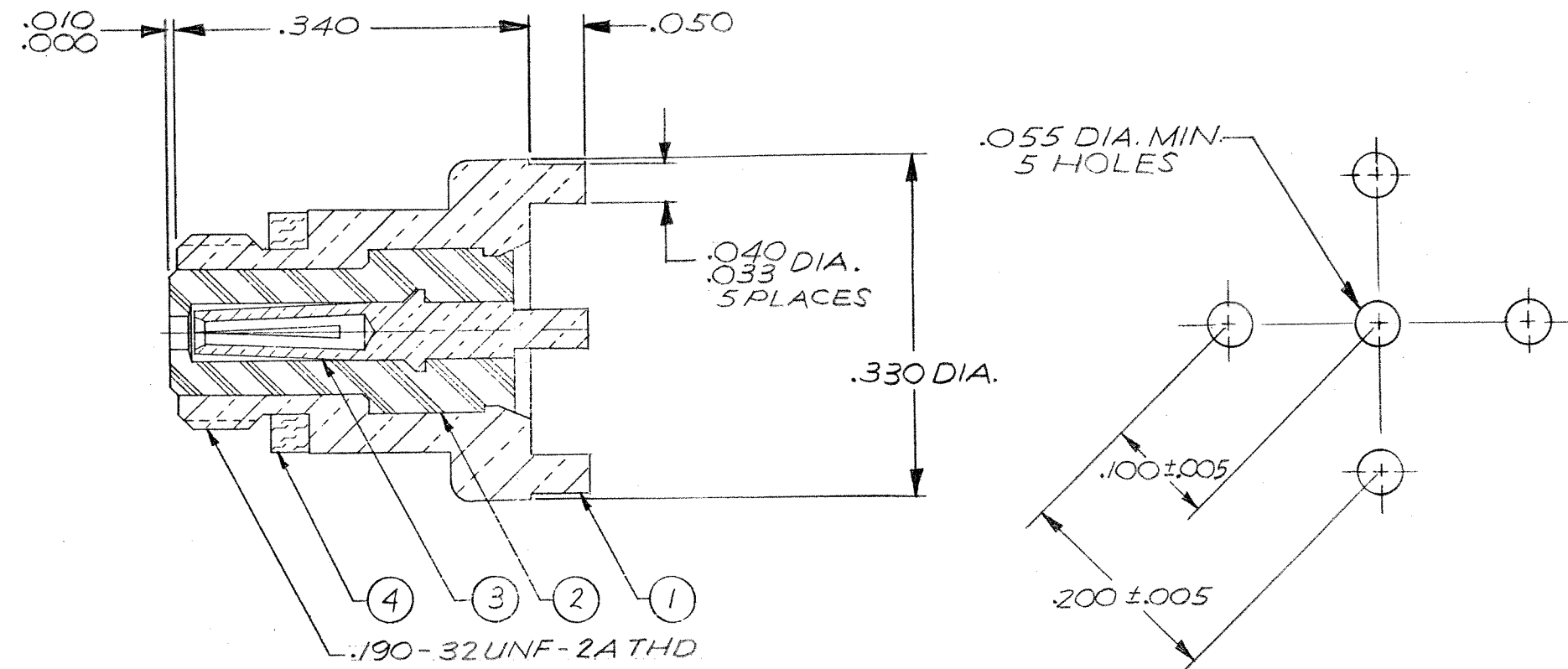


| REVISIONS |     |       |   |         |
|-----------|-----|-------|---|---------|
| ZONE      | LTR | ECN   | DESCRIPTION   | DATE    |
|           | E   | 24252 | REVISED AND REDRAWN 7-10-79<br>ORIG. RELEASE 7-18-61 B.T/F.R.C. | 7-11-79 |
|           | F   | 24577 | UPDATE REV. LETTER, CB 10-11-79                                 | 11/2/79 |
|           | G   | 36887 | ITEM 4, WAS 003-0011-0001                                       | 3/31/97 |
|           | H   | 40503 | UPDATE REV. LETTER  | 9/1/00  |
| J         |     |       | Combine M & CD Dwg  |         |



- NOTES: UNLESS OTHERWISE SPECIFIED.
- THIS CONNECTOR MATES WITH ALL 50 SERIES SCREW-ON PLUGS AS LISTED IN MALCO CATALOG.
  - SILVER PLATE .0002 MIN. PER QQ-S-365, TYPE II, GRADE A.
  - GOLD PLATE PER MIL-G-45204, TYPE II, GRADE C, CLASS I.
  - REFERENCE: HUGHES P/N 922076

Tyco Customer Drawing 1495437

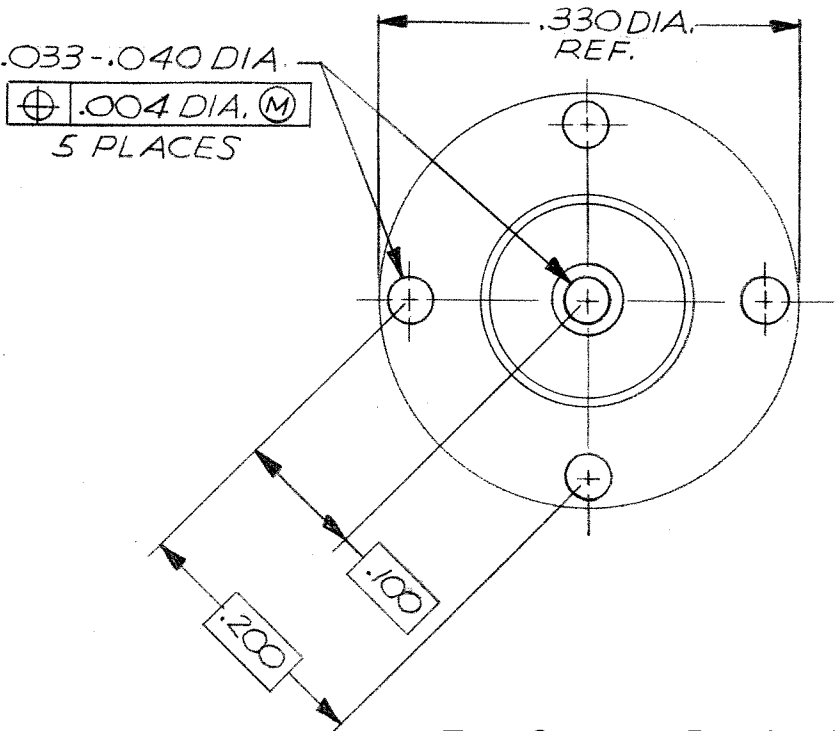
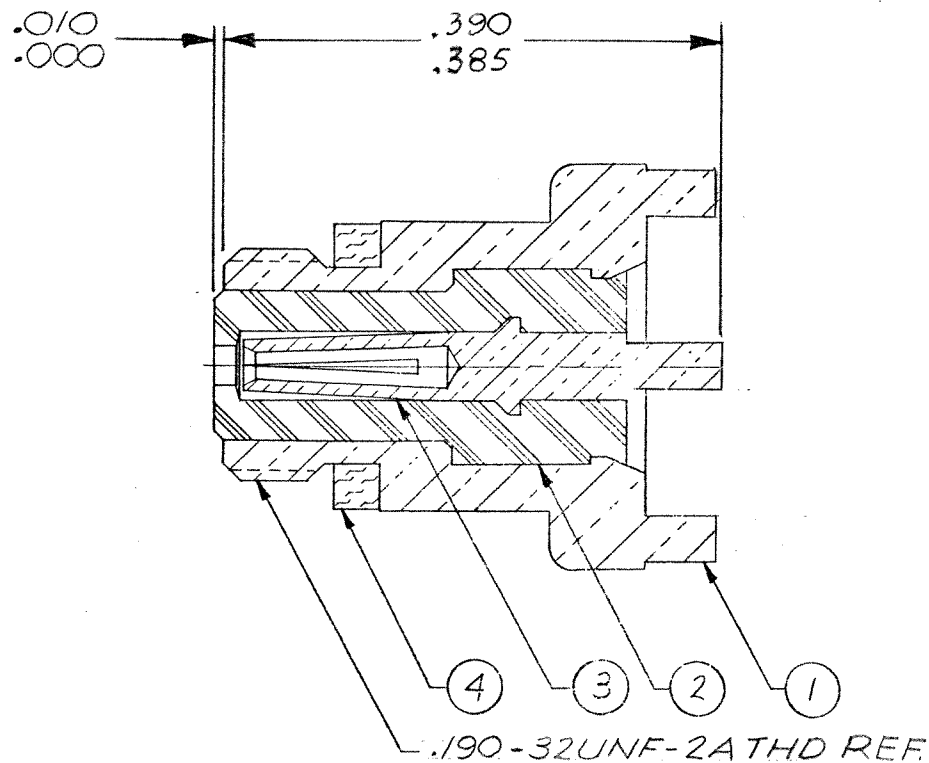
|   |          |               |                         |                            |                 |
|---|----------|---------------|-------------------------|----------------------------|-----------------|
| 1 | 1        | 003-0268-0000 | GASKET                  | SILICONE RUBBER, ZZ-R-765  | 4               |
| 3 | 1        | 005-3795-0002 | CONTACT, SOCKET         | BERYLLIUM COPPER, QQ-C-530 | 3               |
|   | 1        | 003-1332-0001 | INSULATOR               | TEFLON PER L-P-403         | 2               |
| 2 | 1        | 005-3794-0001 | HOUSING                 | BRASS PER QQ-B-626         | 1               |
|   | QTY REQD | CODE IDENT    | PART OR IDENTIFYING NO. | DESCRIPTION                | MAT'L AND SPEC. |

|   |                               |              |                      |  |  |
|---|-------------------------------|--------------|----------------------|--|--|
| UNLESS OTHERWISE SPECIFIED DIMENSIONS ARE IN INCHES TOLERANCES ARE: |                               | CONTRACT NO. |                      | MALCO<br>A MICRODOT COMPANY, INC.<br>220 PASADENA AVE., SO. PASADENA, CALIF. 91030 |  |
| FRACTIONS<br>±  | DECIMALS<br>XX ±<br>XXX ±.010 | ANGLES<br>±  | APPROVALS            | DATE   | PROD. CODE<br>934                                  |
| MATERIAL<br>NOTED   |                               |              | DRAWN                | 7-11-79  | RECEPTACLE<br>PRINTED CIRCUIT<br>S-50 SERIES<br>CD |
| FINISH<br>NOTED   |                               |              | CHECKED              | 7-11-79  |  |
|   |                               |              | PR. ENG.             | 7-11-79  |  |
|   |                               |              | APPD.                |  |  |
| NEXT ASSY   |                               |              | USED ON              |  |  |
| APPLICATION   |                               |              | DO NOT SCALE DRAWING |  |  |

|           |                         |                              |
|-----------|-------------------------|------------------------------|
| SIZE<br>B | CODE IDENT NO.<br>98278 | DRAWING NO.<br>051-0450-0001 |
| SCALE     |                         | SHEET 1 OF 1                 |

| REVISIONS |     |       |  |         |          |
|-----------|-----|-------|--|---------|----------|
| ZONE      | LTR | ECN   | DESCRIPTION  | DATE    | APPROVED |
|           | E   | 24252 | REVISED AND REDRAWN 7-10-79<br>ORIG. RELEASE 9-18-61 B.T./F.R.G. | 1-11-79 | EH       |
|           | F   | 24577 | 15: .385-.390, WAS: .285-.290<br>10-11-79 CB                     | 10/2/79 | h        |
|           | G   | 36837 | ITEM 4, WAS 003-0011-0001  | 3/31/97 | es       |
|           | H   | 40503 | UPDATE REV. LETTER   | 9/1/00  | es       |

J Combine M & CD Dwg



Tyco Customer Drawing 1495437

NOTES:

- THIS CONNECTOR MATES WITH ALL 50 SERIES SCREW-ON PLUGS AS LISTED IN MALCO CATALOG.

|  |          |            |                         |                 |                            |          |
|--|----------|------------|-------------------------|-----------------|----------------------------|----------|
|  | 1        |            | 003-0268-0000           | GASKET          | SILICONE RUBBER, ZZ-R-765  | 4        |
|  | 1        |            | 005-3795-0002           | CONTACT, SOCKET | BERYLLIUM COPPER, QQ-C-530 | 3        |
|  | 1        |            | 003-1332-0001           | INSULATOR       | TEFLON PER L-P-403         | 2        |
|  | 1        |            | 005-3794-0001           | HOUSING         | BRASS PER QQ-B-626         | 1        |
|  | QTY REQD | CODE IDENT | PART OR IDENTIFYING NO. | DESCRIPTION     | MAT'L AND SPEC.            | ITEM NO. |

PARTS LIST

UNLESS OTHERWISE SPECIFIED  
DIMENSIONS ARE IN INCHES  
TOLERANCES ARE:  
FRACTIONS DECIMALS ANGLES  
± .XX ± .XXX ± .005 ±

MATERIAL  
NOTED

FINISH

CONTRACT NO.

APPROVALS  
DRAWN  
CHECKED  
PR. ENG.  
APPD.

DATE  
1-31-79  
7-11-79  
7-12-79



MALCO  
A MICRODOT COMPANY, INC.  
220 PASADENA AVE., SO. PASADENA, CALIF. 91030

RECEPTACLE  
PRINTED CIRCUIT  
S-50 SERIES

PROD. CODE  
934  
CODE  
M

SIZE CODE IDENT NO. DRAWING NO.  
B 98278 051-0450-0001

These drawings and specifications are the property of Microdot Inc., are issued in strict confidence and shall not be divulged, be reproduced or copied, or used as the basis for the manufacture or sale of any article without written permission of Microdot Inc.

SCALE SHEET / OF /

|             |         |
|-------------|---------|
|             |         |
|             |         |
|             |         |
|             |         |
|             |         |
| NEXT ASSY   | USED ON |
| APPLICATION |         |

DO NOT SCALE DRAWING

# Mouser Electronics

Authorized Distributor

Click to View Pricing, Inventory, Delivery & Lifecycle Information:

[TE Connectivity:](#)

[051-0450-0001](#)