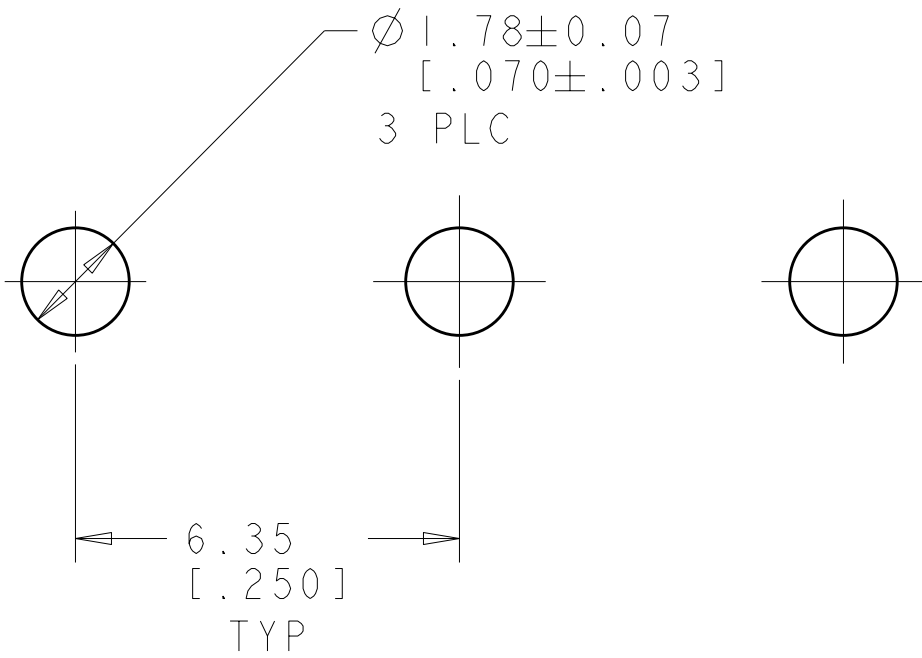
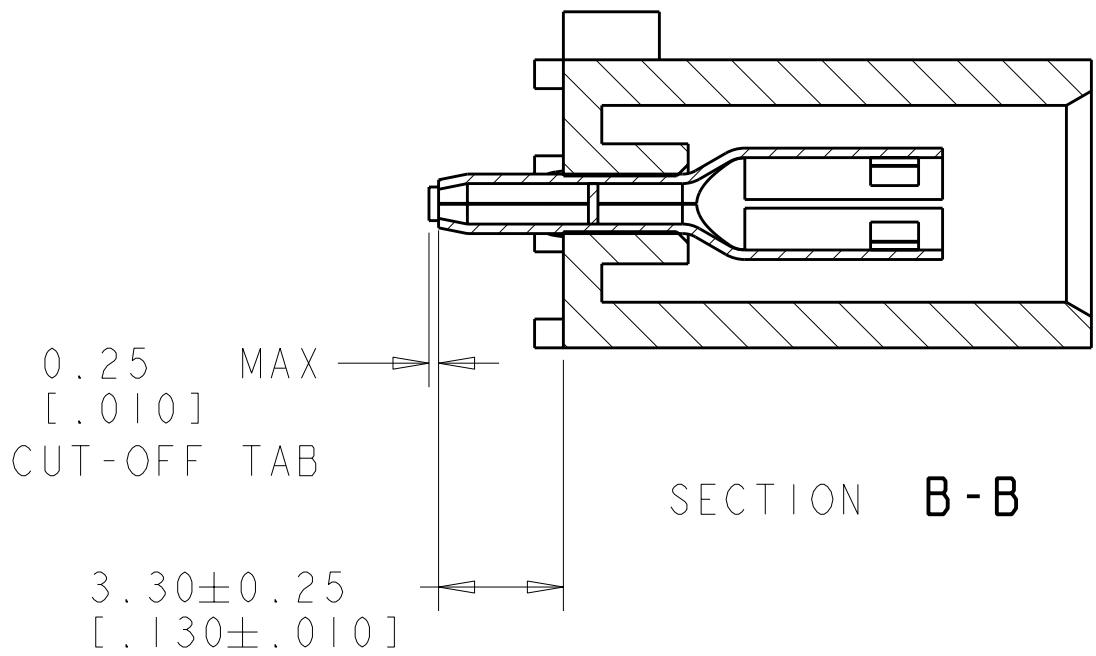
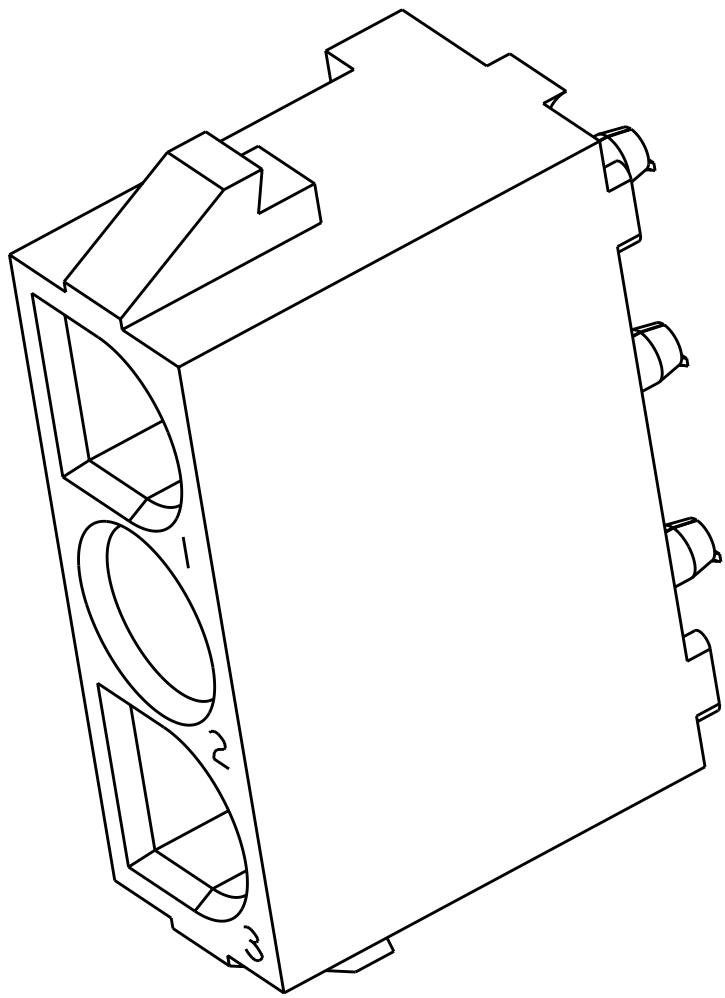
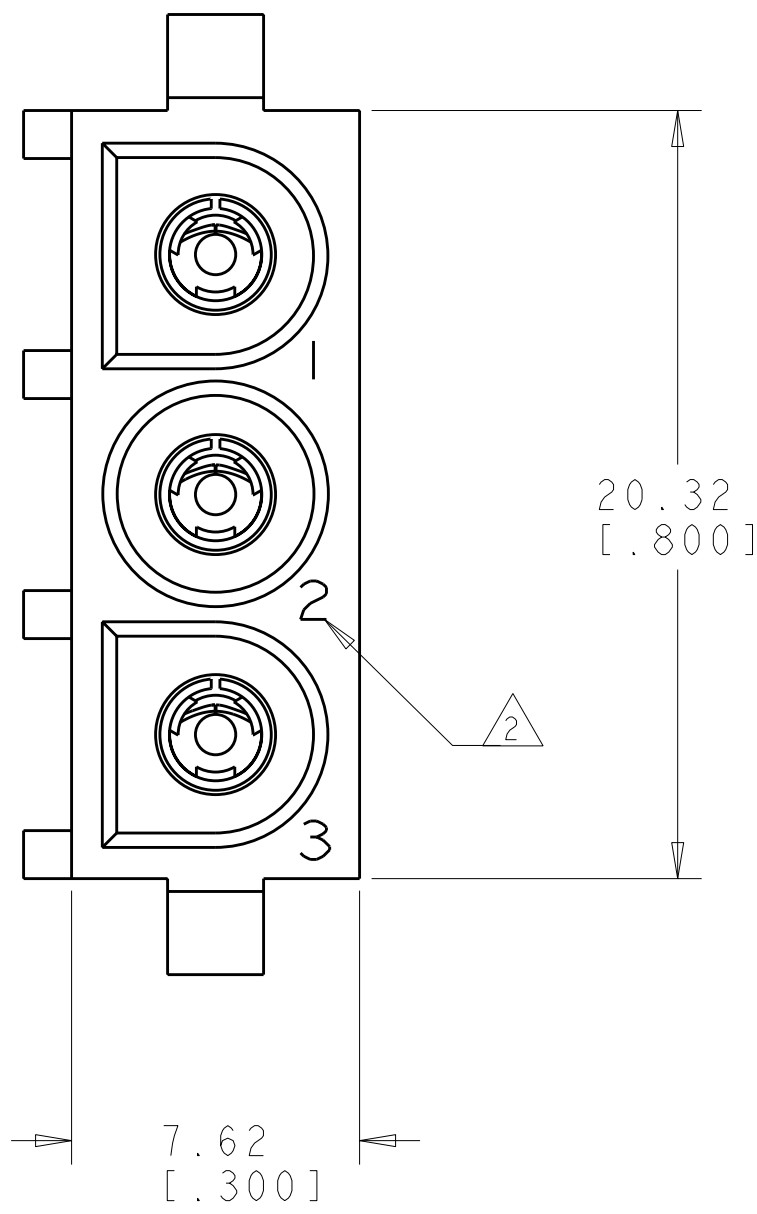
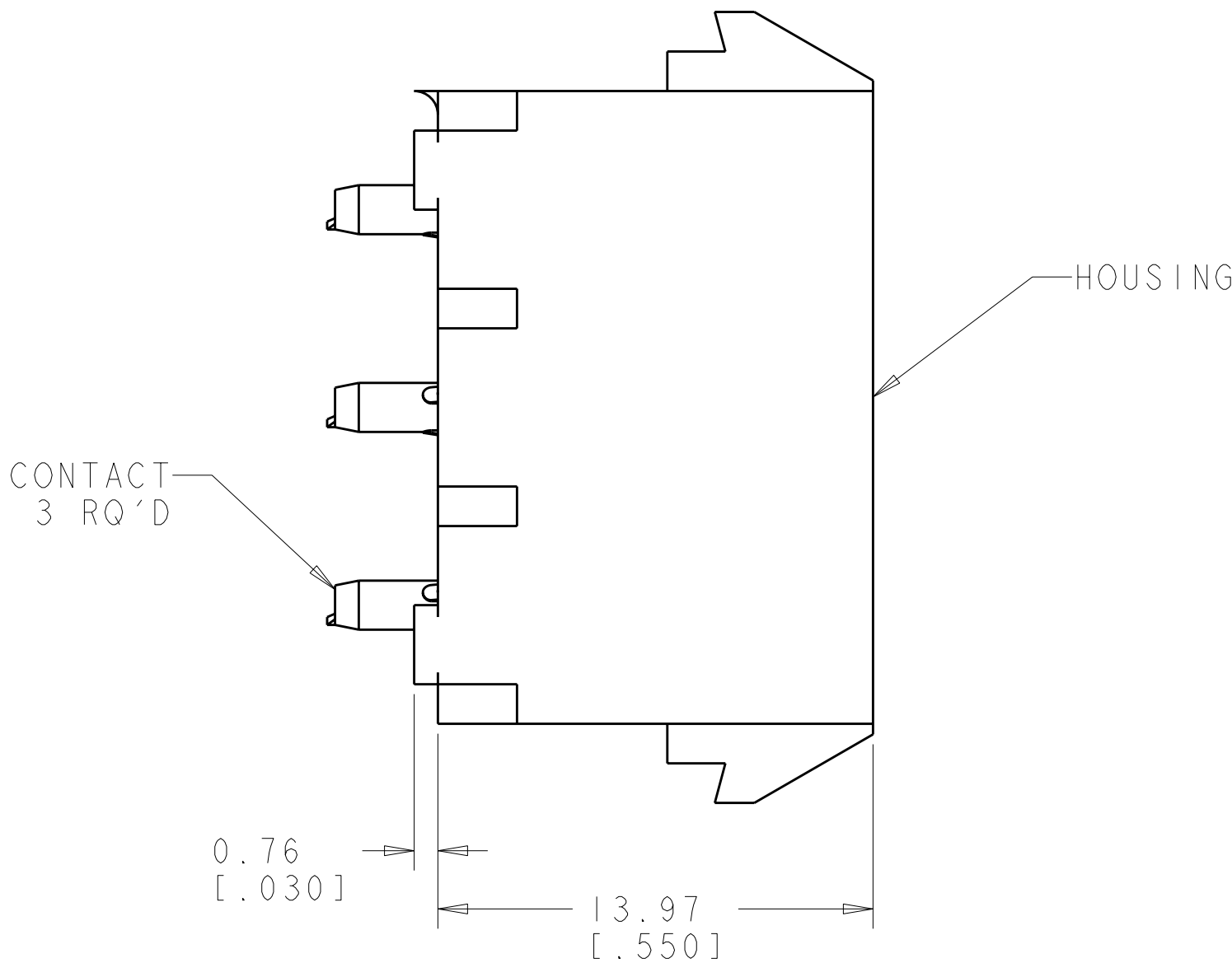
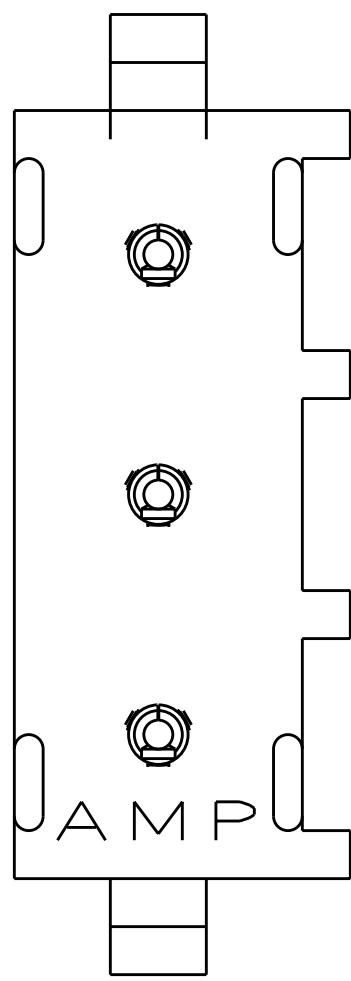


LOC		DIST		REVISIONS						
CM	00	P	LTR	DESCRIPTION			DATE	DWN	APVD	
			A	REVISED PER ECR-12-005286			22MAR2012	KH	TM	

1. PARTS COMPLY TO AMP SOLDERABILITY SPECIFICATION 109-11-3.

△ CIRCUIT IDENTIFICATION CHARACTERS ARE ADJACENT TO THE INDICATED CAVITIES, BUT LOCATION AND ORIENTATION MAY DIFFER FROM PRINT.



RECOMMENDED MOUNTING HOLE PATTERN
FOR 1.57 [.062] THICK P.C. BOARD

PHOSPOR BRONZE, PRE-TIN		NYLON, UL94V-2, NATURAL		2029402-1
SOCKET CONTACT MATERIAL AND FINISH		HOUSING MATERIAL AND COLOR		PART NUMBER
<div>THIS DRAWING IS A CONTROLLED DOCUMENT.</div> <div>DIMENSIONS: mm [INCHES]</div> <div></div> <div>MATERIAL: SEE TABLE</div>		DWN: JR. RUTH [6NOV11] CHK: TOM MICHELUTTI [6NOV11] APVD: TOM MICHELUTTI [6NOV11]	<div> TE Connectivity</div> <div>NAME: SOCKET HEADER ASSEMBLY, 3 CIRCUIT, UNIVERSAL MATE-N-LOK™</div> <div>SIZE: CAGE CODE: DRAWING NO: A100779 ©=2029402</div> <div>RESTRICTED TO: -</div>	
		PRODUCT SPEC		
		APPLICATION SPEC		
		WEIGHT: -		
CUSTOMER DRAWING		SCALE: 8:1	SHEET: 1 OF 1	REV: A

Mouser Electronics

Authorized Distributor

Click to View Pricing, Inventory, Delivery & Lifecycle Information:

[TE Connectivity:](#)

[2029402-1](#)