

REVISIONS					
P	LTR	DESCRIPTION	DATE	DWN	APVD
	S2	REVISED PER ECO-15-006450	28APR2015	NK	RH
	S3	REVISED PER ECO-16-018654	15MAY2017	RK	PO
	S4	REVISED PER ECO-17-012597	27OCT2017	RK	PO

SPECIFICATIONS:

MATERIAL
BASE, PPS, UL94V-0, BLACK
COVER, PPS, UL94V-0, BLACK
ACTUATOR, PA6T, UL94V-0, WHITE
FIXED CONTACT/TERMINAL, CU ALLOY-GOLD FLASH OVER NICKEL
MOVING CONTACT, CU ALLOY, PLATE-GOLD FLASH/NICKEL

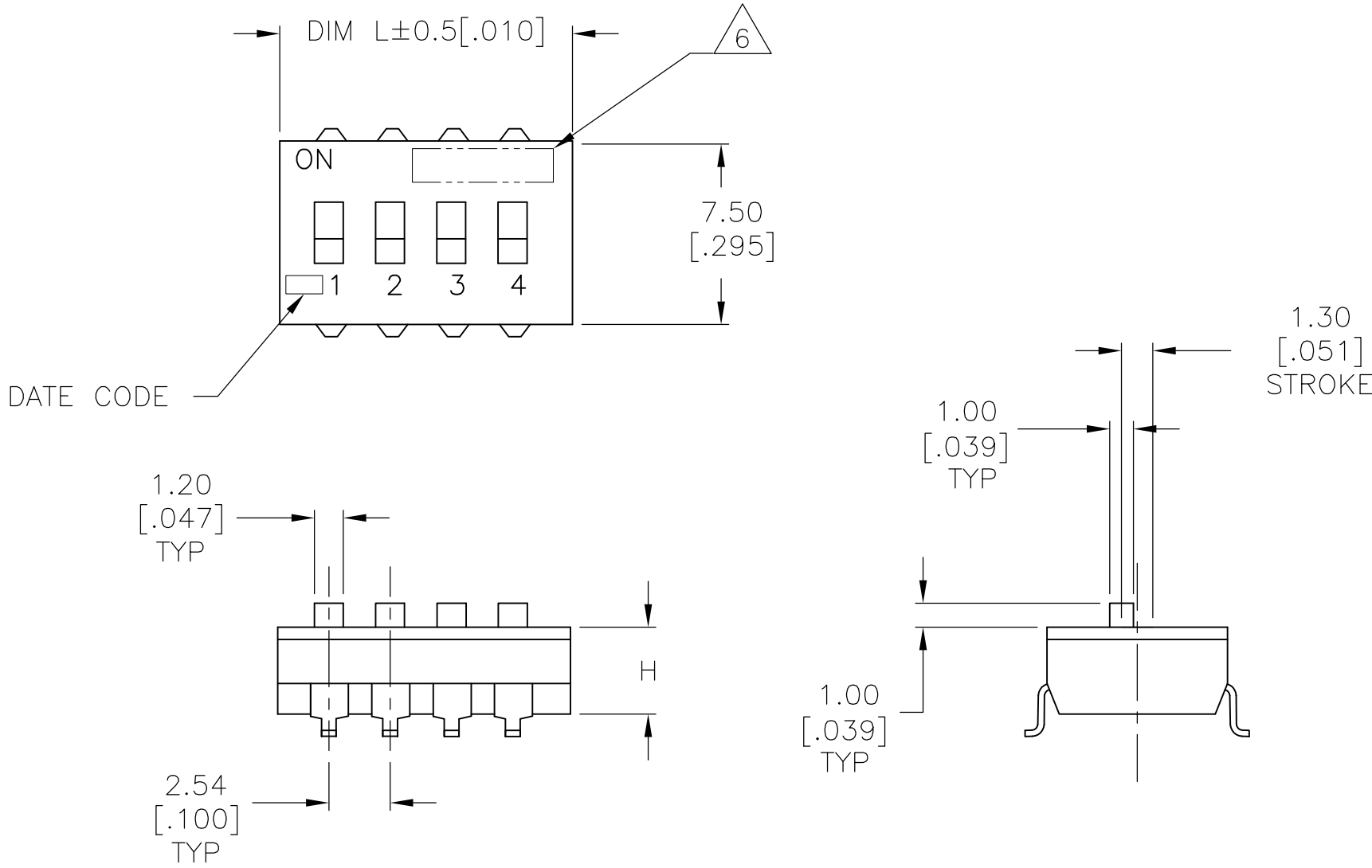
ELECTRICAL
MAX CONTACT RATING SWITCHING, 100MILLIAMP @ 24 VDC
MIN CONTACT RATING SWITCHING, .1MICROAMP @ 1 MILLIVOLT
MAX CONTACT NON-SWITCHING, 1AMP @ 5 VDC
INITIAL CONTACT RESISTANCE, 50 MILLIOHMS MAX.
CONTACT RESISTANCE (AFTER ENVIRONMENTAL TEST), 100 MILLIOHMS
CONTACT RESISTANCE (AFTER GAS TEST), 300 MILLIOHMS
INSULATION RESISTANCE, 1,000 MEGOHMS MIN. @ 100 VDC
DIELECTRIC STRENGTH, 500 VAC RMS @ SEA LEVEL
LIFE EXPECTANCY, 1,000 CYCLES


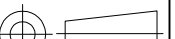
MECHANICAL
OPERATING FORCE, LESS THAN 800 GRAMS
CONTACT PRESSURE, 280,000 PSI

ENVIRONMENTAL
OPERATING TEMPERATURE, -30 TO +85 DEGREES C
STORAGE TEMPERATURE, -45 TO +105 DEGREES C
CLEANING, AQUEOUS OR SOLVENT
SOLDER HEAT RESISTANCE, PER 109-201,COND B, SWITCH "OFF".
SOLDERABILITY PER JIS C 0050 & JIS C 0053

- 1 SWITCHES TO BE RECEIVED IN THE "OFF" POSITION AND PACKAGED IN CLEAR TUBES TO ACCOMMODATE AUTO-INSERTION.
- 2 TOP SURFACE TO BE CLEARLY MARKED AS SHOWN.
- 3 SWITCHES TO BE BLACK WITH WHITE ACTUATORS AND MARKINGS.
- 4 TERMINAL OPTION: OLD T&B P/N ADExxS, SA OR SB
S= OUTSIDE "L" TERMINALS; SA= INSIDE "L" TERMINALS;
SB= BUTT TERMINALS.
- 5 ALL MATERIALS AND FINISHES SHALL COMPLY WITH EU DIRECTIVE 2002/95/EC OF 27JAN2003 (ROHS).
- 6 OBSOLETE PARTS: OBSOLETE CIS STREAMLINING PER D.RENAUD/D.SINISI.
- 7 TAPE AND REEL PACKING PER PAGE 3 SPECIFICATIONS.

SEE SHEET 2 FOR PART NUMBER TABLE
AND MOUNTING OPTIONS



THIS DRAWING IS A CONTROLLED DOCUMENT.		DWN B.S.VISWESWARA		10FEB05		 TE Connectivity							
DIMENSIONS: mm [INCHES]		CHK M.SARVER		-									
		APVD M.SARVER		-		NAME DIP SWITCH, ADE-SMT SERIES							
		PRODUCT SPEC		-									
		APPLICATION SPEC		-									
		ANGLES ± -		-									
MATERIAL -		FINISH -		WEIGHT		SIZE A2		CAGE CODE -		DRAWING NO C=1825058		RESTRICTED TO -	
CUSTOMER DRAWING						SCALE 4:1		SHEET 1 of 3		REV S4			

D

C

B

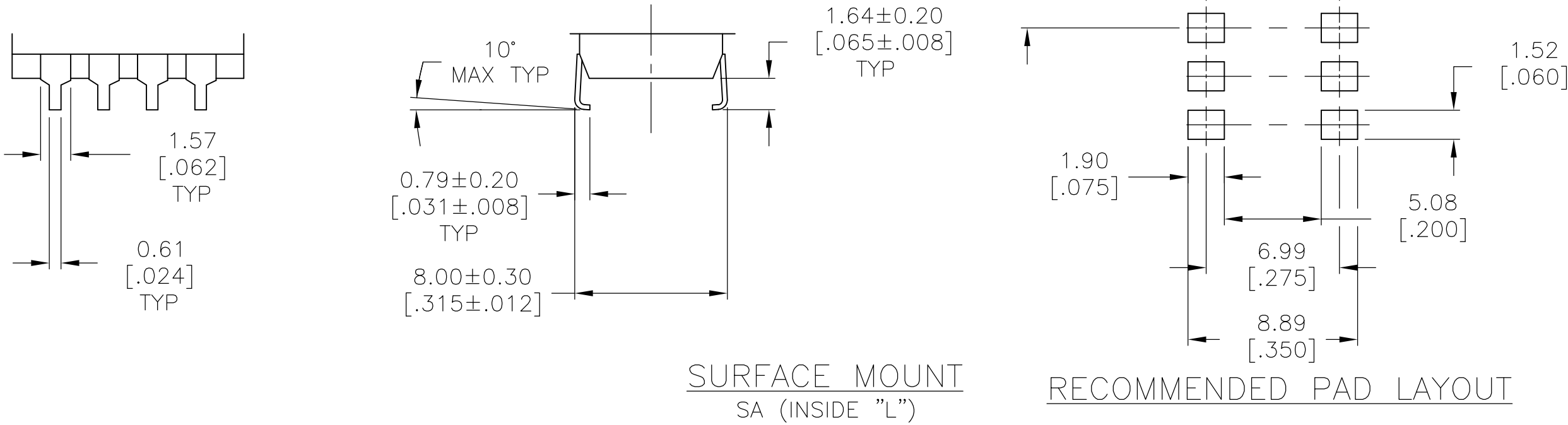
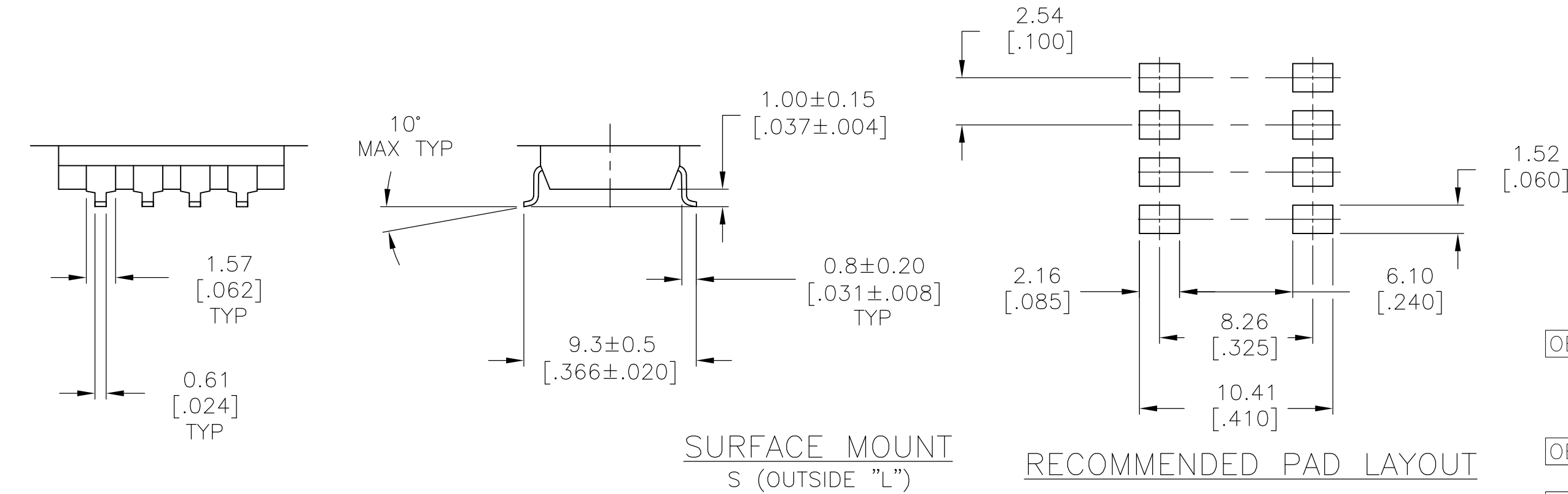
A


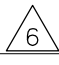


D

C

B

A



OBSOLETE	ADE12STR04	3.61	[.142]	32.51	[1.280]	12	4-1825058-1
	ADE10STR04	3.50	[.138]	27.30	[1.075]	10	4-1825058-0
	ADE09STR04	3.50	[.138]	24.54	[.978]	9	3-1825058-9
	ADE08STR04	3.50	[.138]	22.30	[.878]	8	3-1825058-8
OBSOLETE	ADE07STR04	3.50	[.138]	19.76	[.778]	7	3-1825058-7
	ADE06STR04	3.50	[.138]	17.22	[.678]	6	3-1825058-6
OBSOLETE	ADE05STR04	3.50	[.138]	14.68	[.578]	5	3-1825058-5
OBSOLETE	ADE04STR04	3.50	[.138]	12.14	[.478]	4	3-1825058-4
OBSOLETE	ADE03STR04	3.50	[.138]	9.60	[.378]	3	3-1825058-3
	ADE02STR04	3.50	[.138]	7.00	[.276]	2	3-1825058-2
	ADE04SATR04	3.50	[.138]	12.14	[.478]	4	3-1825058-1
OBSOLETE	ADE12SB04	3.61	[.142]	32.51	[1.280]	12	3-1825058-0
OBSOLETE	ADE12SA04	3.61	[.142]	32.51	[1.280]	12	2-1825058-9
OBSOLETE	ADE12S04	3.61	[.142]	32.51	[1.280]	12	2-1825058-8
OBSOLETE	ADE10SB04	3.50	[.138]	27.30	[1.075]	10	2-1825058-7
OBSOLETE	ADE10SA04	3.50	[.138]	27.30	[1.075]	10	2-1825058-6
	ADE10S04	3.50	[.138]	27.30	[1.075]	10	2-1825058-5
	ADE09SB04	3.50	[.138]	24.54	[.978]	9	2-1825058-4
	ADE09SA04	3.50	[.138]	24.54	[.978]	9	2-1825058-3
	ADE09S04	3.50	[.138]	24.54	[.978]	9	2-1825058-2
OBSOLETE	ADE08SB04	3.50	[.138]	22.30	[.878]	8	2-1825058-1
	ADE08SA04	3.50	[.138]	22.30	[.878]	8	2-1825058-0
	ADE08S04	3.50	[.138]	22.30	[.878]	8	1-1825058-9
OBSOLETE 	ADE07SB04	3.50	[.138]	19.76	[.778]	7	1-1825058-8
	ADE07SA04	3.50	[.138]	19.76	[.778]	7	1-1825058-7
	ADE07S04	3.50	[.138]	19.76	[.778]	7	1-1825058-6
OBSOLETE	ADE06SB04	3.50	[.138]	17.22	[.678]	6	1-1825058-5
OBSOLETE	ADE06SA04	3.50	[.138]	17.22	[.678]	6	1-1825058-4
	ADE06S04	3.50	[.138]	17.22	[.678]	6	1-1825058-3
OBSOLETE 	ADE05SB04	3.50	[.138]	14.68	[.578]	5	1-1825058-2
	ADE05SA04	3.50	[.138]	14.68	[.578]	5	1-1825058-1
	ADE05S04	3.50	[.138]	14.68	[.578]	5	1-1825058-0
	ADE04SB04	3.50	[.138]	12.14	[.478]	4	1825058-9
OBSOLETE	ADE04SA04	3.50	[.138]	12.14	[.478]	4	1825058-8
	ADE04S04	3.50	[.138]	12.14	[.478]	4	1825058-7
 OBSOLETE	ADE03SB04	3.50	[.138]	9.60	[.378]	3	1825058-6
OBSOLETE	ADE03SA04	3.50	[.138]	9.60	[.378]	3	1825058-5
	ADE03S04	3.50	[.138]	9.60	[.378]	3	1825058-4
OBSOLETE	ADE02SB04	3.50	[.138]	7.00	[.276]	2	1825058-3
OBSOLETE	ADE02SA04	3.50	[.138]	7.00	[.276]	2	1825058-2
	ADE02S04	3.50	[.138]	7.00	[.276]	2	1825058-1
	T&B P/N	DIM H		DIM L		POSITION	PART NO.

THIS DRAWING IS A CONTROLLED DOCUMENT.

DIMENSIONS:
mm [INCHES]

0 PLC ± –
1 PLC ± –
2 PLC ± 0.30[.012]
3 PLC ± –
4 PLC ± –
ANGLES ± –

TOLERANCES UNLESS
OTHERWISE SPECIFIED:

FINISH –

MATERIAL –

–

DWN
B.S.VISWESWARA
CHK
M.SARVER
APVD
M.SARVER
PRODUCT SPEC
APPLICATION SPEC
WEIGHT –

10FEB05
–
–
–
–
–

CUSTOMER DRAWING

TE Connectivity

NAME

DIP SWITCH, ADE–SMT SERIES

SIZE
A2

CAGE CODE
–

DRAWING NO
C=1825058

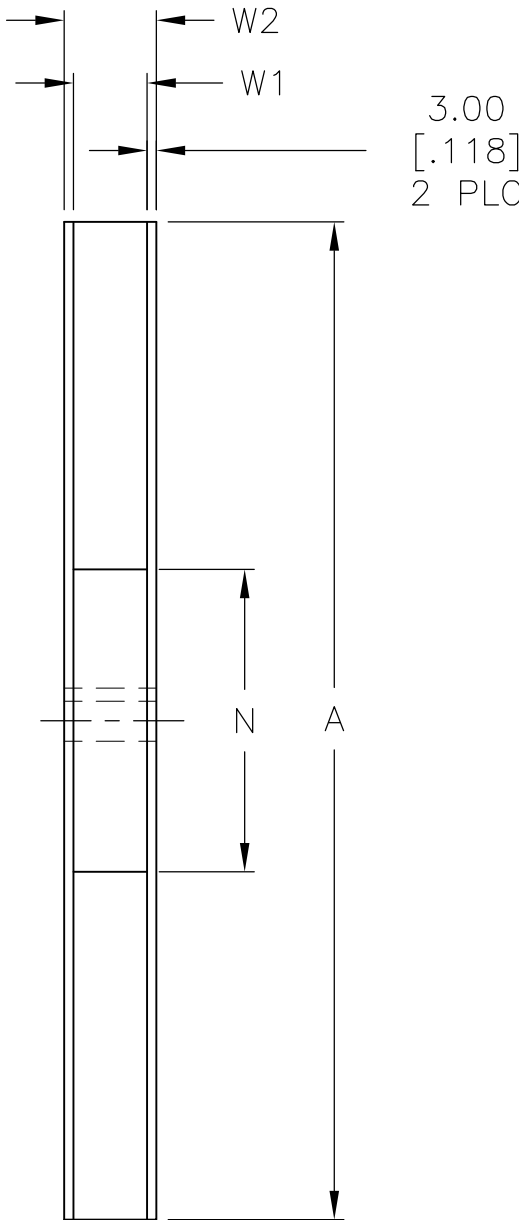
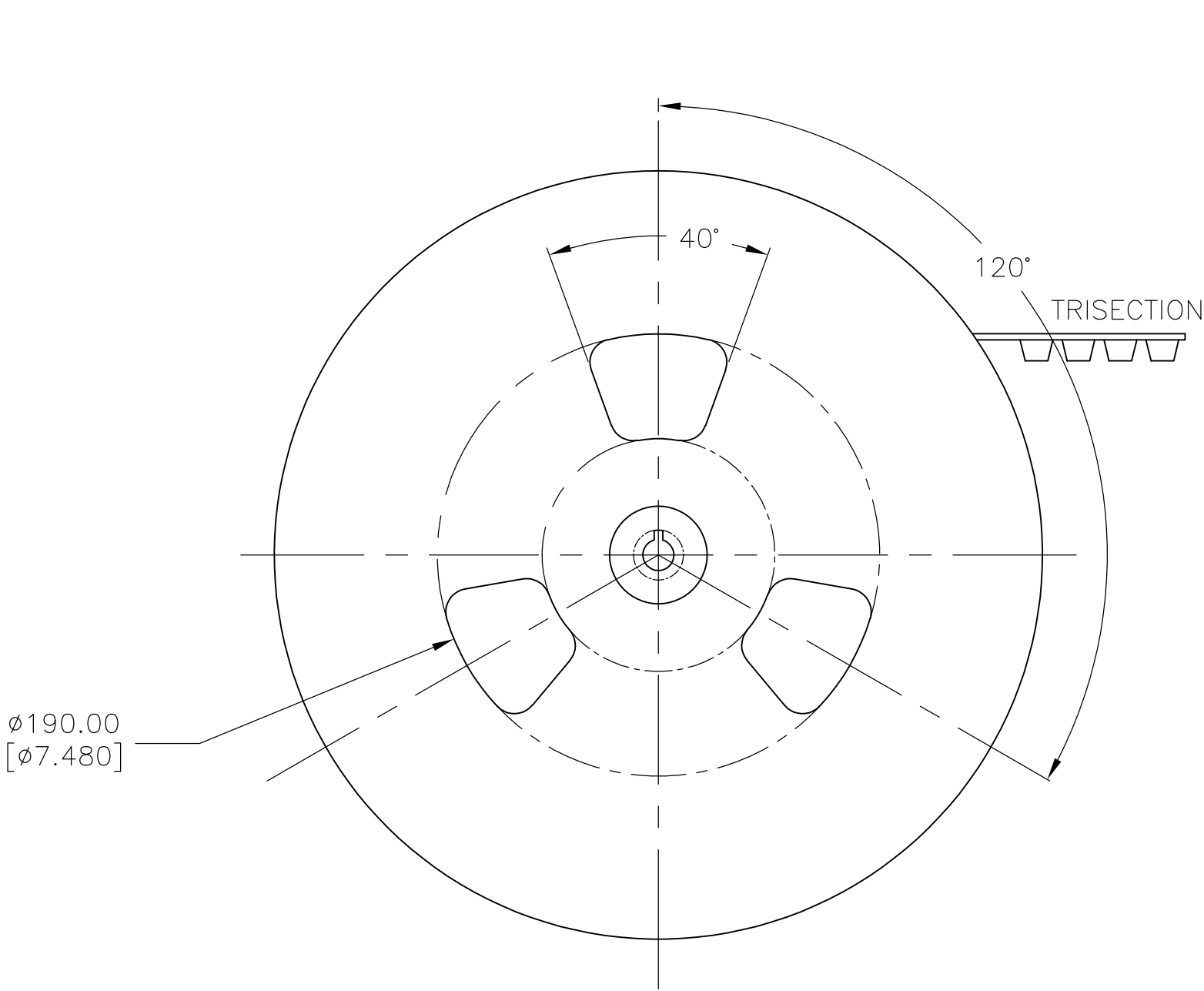
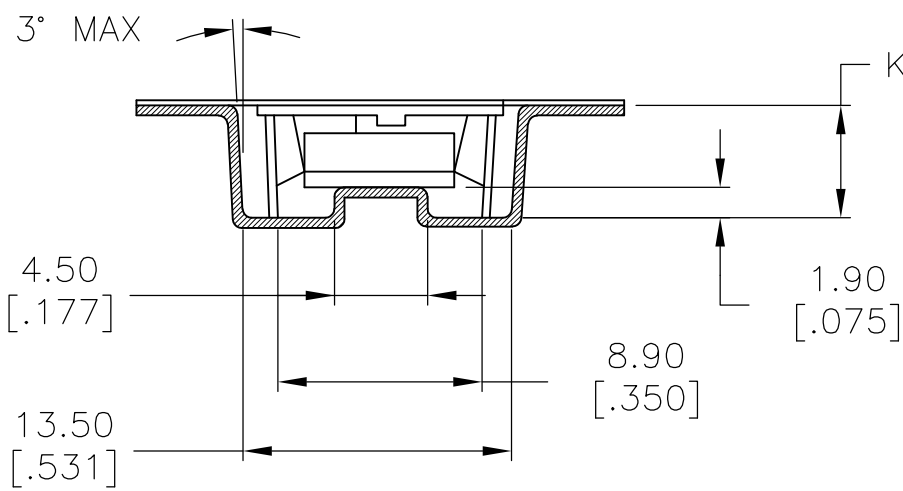
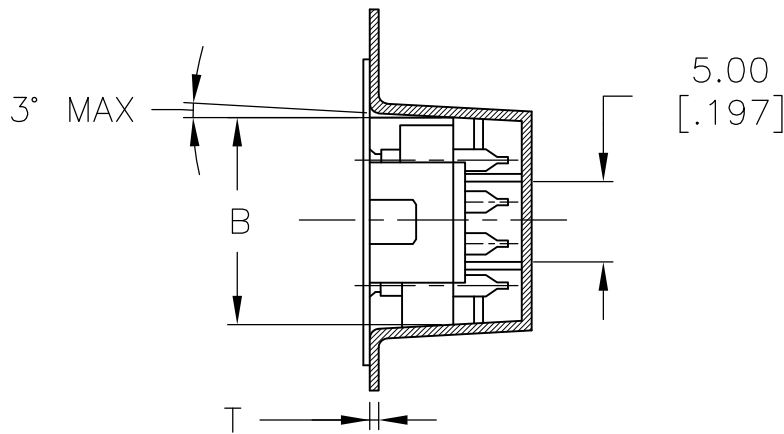
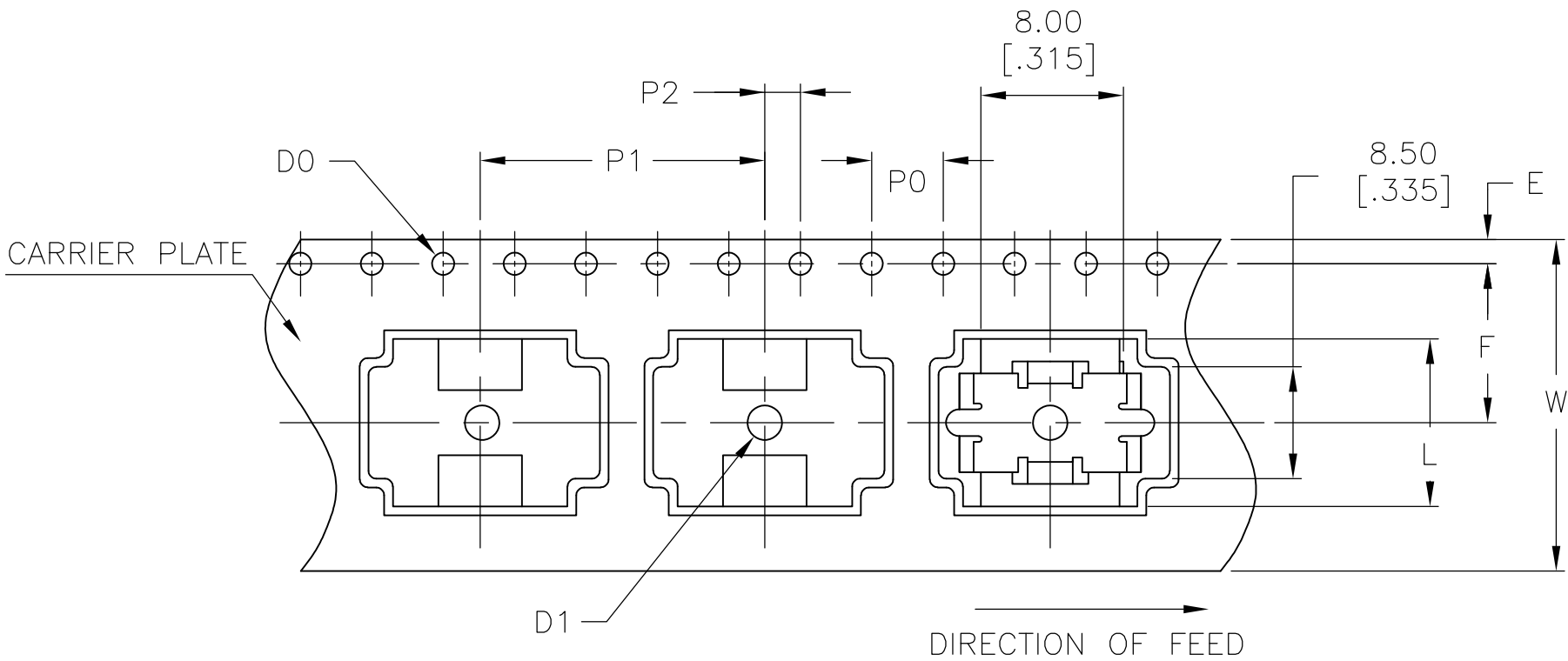
RESTRICTED TO
–

SCALE
4:1

SHEET
2 of 3

REV
S4

REVISIONS					
P	LTR	DESCRIPTION	DATE	DWN	APVD
	-	SEE SHEET 1	-	-	-


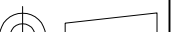


	DESCRIPTION	MATERIAL	DIMENSION	FINISH	REMARKS
1	REEL	SIDE: CARDBOARD CORE: STYLOFOAM	MENTIONED BELOW		
2	EMBOSSSED TAPE	-	MENTIONED BELOW	ANTISTATIC	BLACK
3	TOP COVER TAPE	-	MENTIONED BELOW	ANTISTATIC	TRANSPARENT

4P	$\phi 330.00 \pm 2.10$ [12.992 ± .082]	$\phi 100$ [3.940]	$24.40^{+2.00}_0$ [.960 $^{+.790}_{.000}$]	30.40 [1.997]
NO OF POSITION	A	N (MIN)	W1	W2 (MAX)

4P	$\phi 1.50^{+0.10}_0$ [.059 $^{+.003}_{.000}$]	4.00 ± 0.10 [.157 ± .003]	16.00 ± 0.10 [.629 ± .003]	2.00 ± 0.15 [.078 ± .005]	11.50 ± 0.10 [.453 ± .003]	7.40 ± 0.10 [.291 ± .003]
NO OF POSITION	D1	P0	P1	P2	F	K

4P	24.00 ± 0.30 [.944 ± .011]	12.90 ± 0.10 [.507 ± .003]	1.75 ± 0.10 [.068 ± .003]	0.50 ± 0.05 [.020 ± .001]	12.14 ± 0.50 [.477 ± .020]	$\phi 1.50^{+0.10}_0$ [.059 $^{+.003}_{.000}$]
NO OF POSITION	W	B	E	T	L	DO

THIS DRAWING IS A CONTROLLED DOCUMENT.		DWN B.S.VISWESWARA CHK M.SARVER APVD M.SARVER PRODUCT SPEC APPLICATION SPEC WEIGHT		10FEB05 — — — — — — — — —		 TE Connectivity					
DIMENSIONS: mm [INCHES]		TOLERANCES UNLESS OTHERWISE SPECIFIED:		NAME							
		0 PLC ± — 1 PLC ± — 2 PLC ± 0.30[.012] 3 PLC ± — 4 PLC ± — ANGLES ± —		DIP SWITCH, ADE-SMT SERIES							
MATERIAL —		FINISH —		SIZE A2		CAGE CODE —		DRAWING NO C=1825058		RESTRICTED TO —	
CUSTOMER DRAWING						SCALE 4:1		SHEET 3 of 3		REV S4	

Mouser Electronics

Authorized Distributor

Click to View Pricing, Inventory, Delivery & Lifecycle Information:

[TE Connectivity:](#)

[2-1825058-2](#) [2-1825058-3](#)