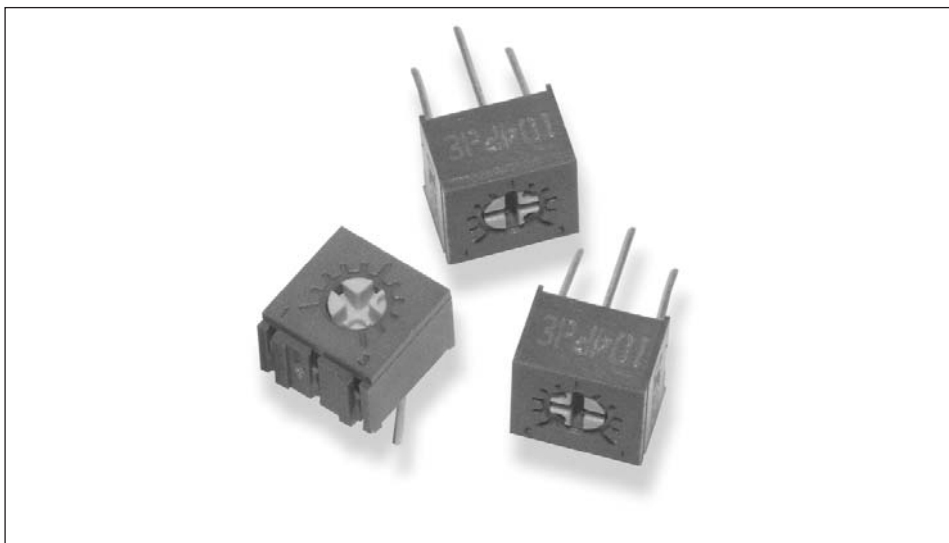


## Type 4275 Series

### Key Features

- High Resolution Stable Cermet Element
- Only 6mm Square
- Vertical or Horizontal Adjustment
- 0.5 Watt Rating at 70°C
- Choice of Pin Configuration
- Rugged Construction
- Flame Retardant
- Supplied in Firm Plastic Tubes



A tiny, fully sealed, professional trimmer offered with a range of pin configurations. The 4275 is available with top or side adjustment. Standard packaging is in tough plastic tubes. The cermet element is very stable and has good setability.

A high quality modern trimmer at an attractive price. The product is designed for use in small size professional equipments and boasts performance well beyond its price.

### Characteristics - Electrical

<b>Resistance Range:</b>	100R to 2M
<b>Resistance Values:</b>	1, 2 and 5 in each decade
<b>Resistance Tolerance:</b>	10%
<b>End Resistance:</b>	10 ohms or 1% whichever is greater
<b>Power Rating:</b>	0.5W at 70°C derating to zero at 125°C
<b>Isolation Voltage:</b>	300 V dc or ac peak
<b>Limiting Element Voltage:</b>	220 V dc or ac RMS, maximum
<b>Insulation Resistance:</b>	1000 M at 500 V dc, minimum
<b>Rotational Noise (CRV):</b>	3 Ohms or 2%, whichever is greater
<b>Electrical Adjustment:</b>	1 turn - 240° Nominal
<b>Temperature Coefficient:</b>	± 250ppm/°C

### Characteristics - Mechanical

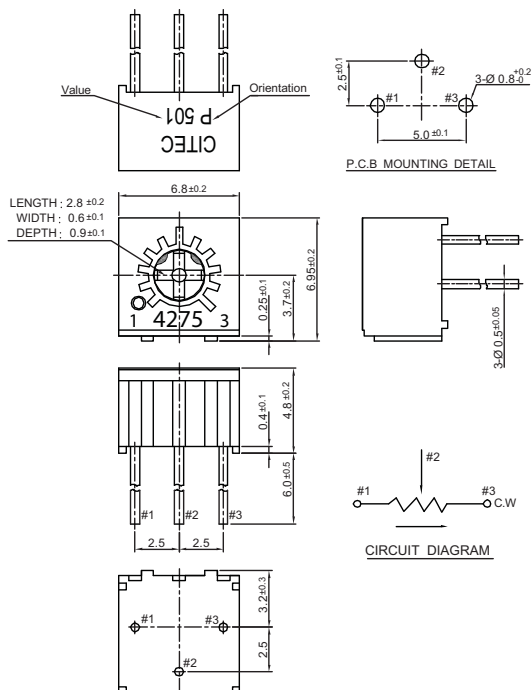
<b>End Stop:</b>	40 mNm, minimum
<b>Starting Torque:</b>	30 mNm, maximum
<b>Mechanical Adjustment:</b>	1 turn - 260° Nominal
<b>Weight:</b>	0.6 gm Nominal

### Characteristics - Environmental

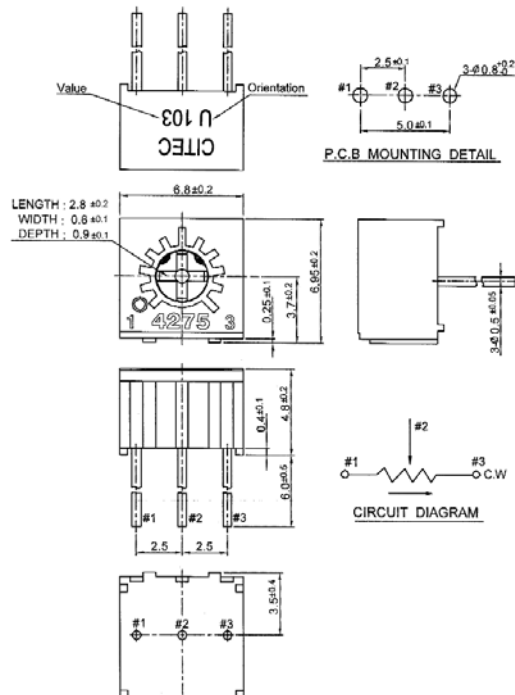
<b>Temperature Range:</b>	-55°C to +125°C
<b>Temperature Storage:</b>	250 hrs. at 125°C
<b>Thermal Shock:</b>	5 cycles -55°C to 125°C
<b>Bump Severity:</b>	4000 bumps 40G
<b>Vibration Severity:</b>	10 - 500 Hz, 30G
<b>Rotational Life:</b>	200 cycles, minimum
<b>Load Life at 70°C:</b>	ΔR <3% after 1000 hours.
<b>Sealing:</b>	Sealed for board washing
<b>Soldering Heat:</b>	5 seconds at 350°C
<b>Climatic Category:</b>	55/125/21

## Type 4275 Series

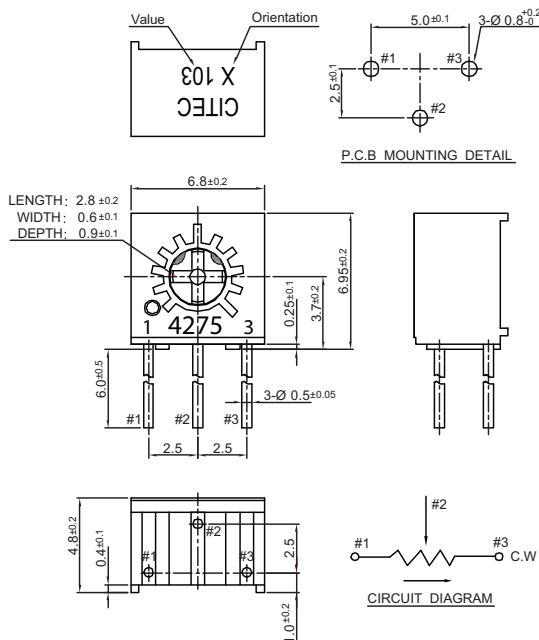
### Dimensions 4275P



### Dimensions 4275U

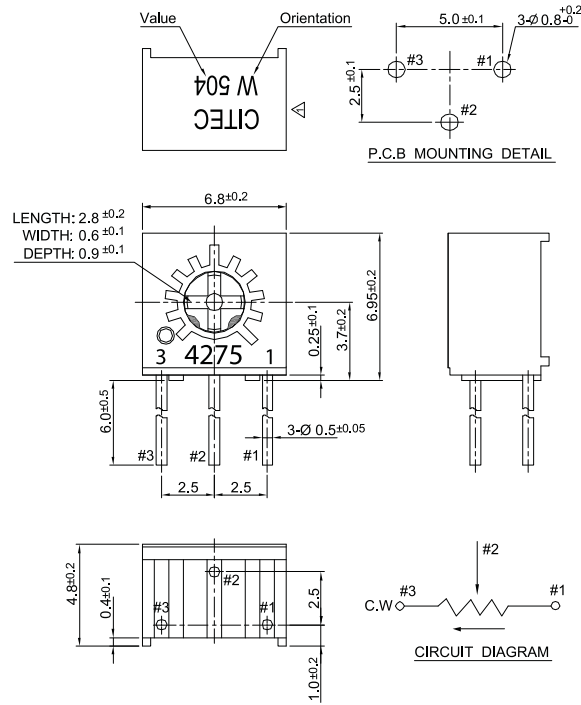


### 4275X



## Type 4275 Series

### Dimensions 4275W



### How to Order

4275	P	104	K
Common Part	Pin/Adjustment Style	Resistance Value	Tolerance
4275	P - Top Adjust X - Side Adjust U - Top Adjust Inline W - Side Adjust Rev.	The first two digits are significant figures of resistance value and the third denotes the number of zeros following.  e.g. 100R: 101 1K0: 102 10K: 103 100K: 104	K - 10 %

# Mouser Electronics

Authorized Distributor

Click to View Pricing, Inventory, Delivery & Lifecycle Information:

[TE Connectivity:](#)

[4275X105K](#) [4275P502K](#) [4275P103K](#) [4275U103K](#)