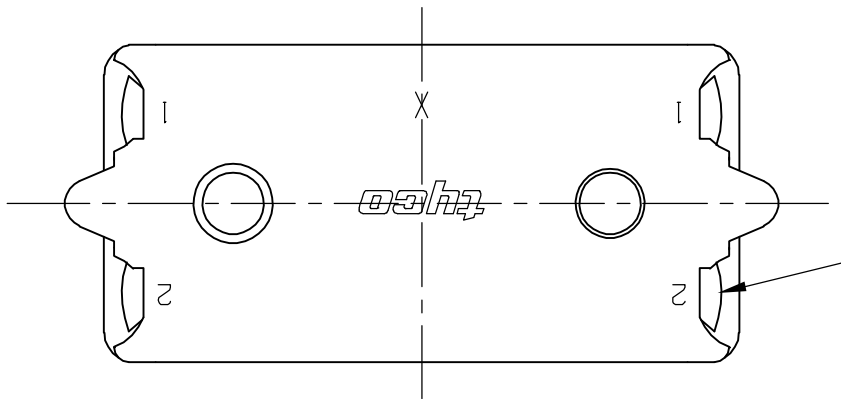
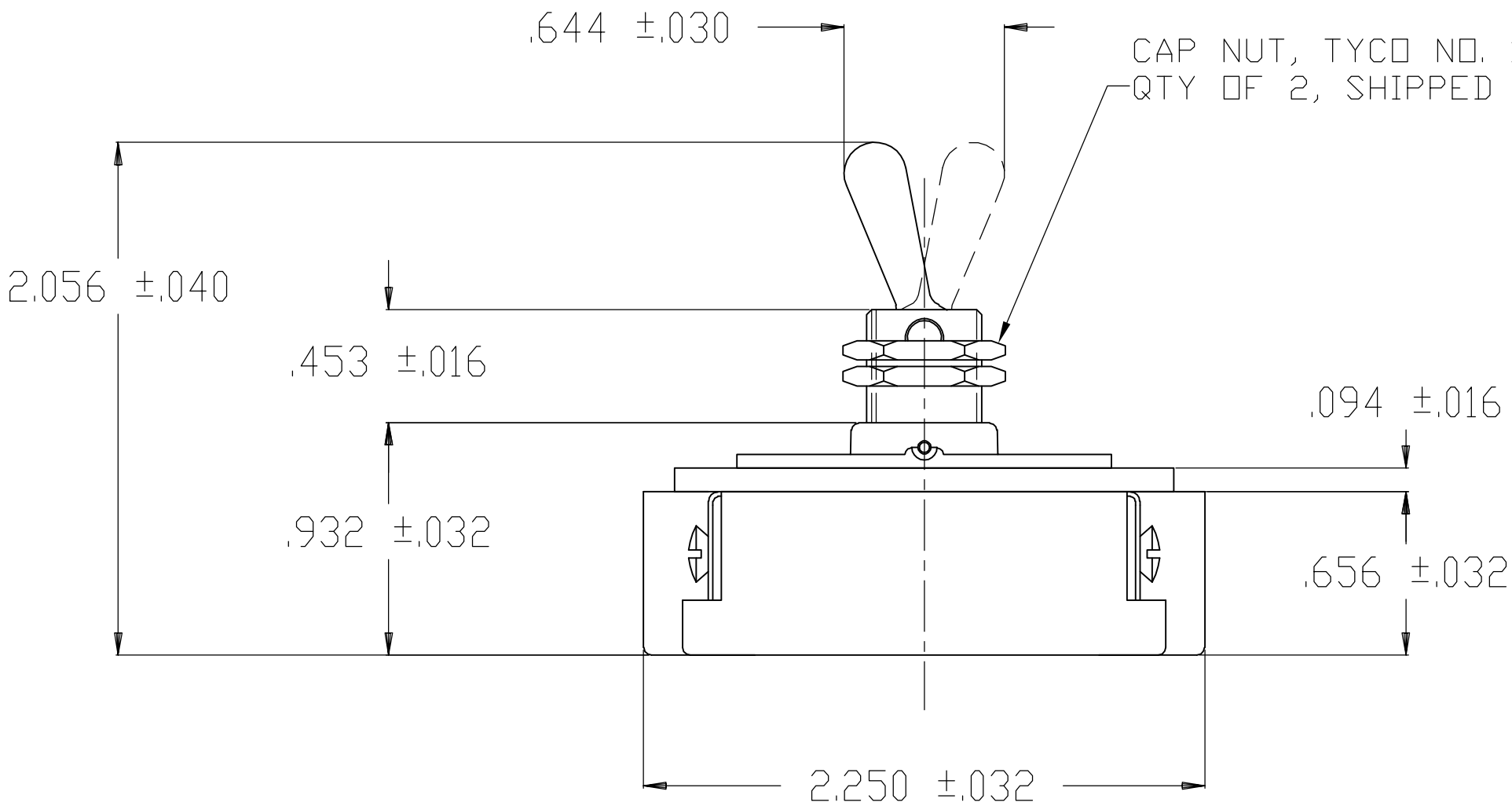
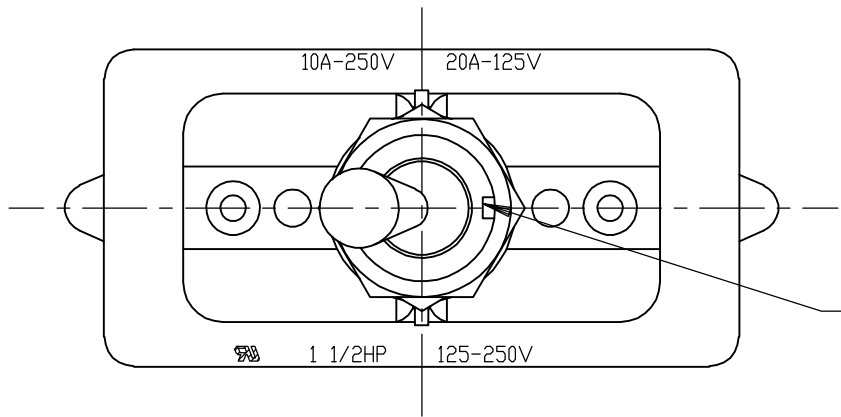


THIS DRAWING IS UNPUBLISHED.

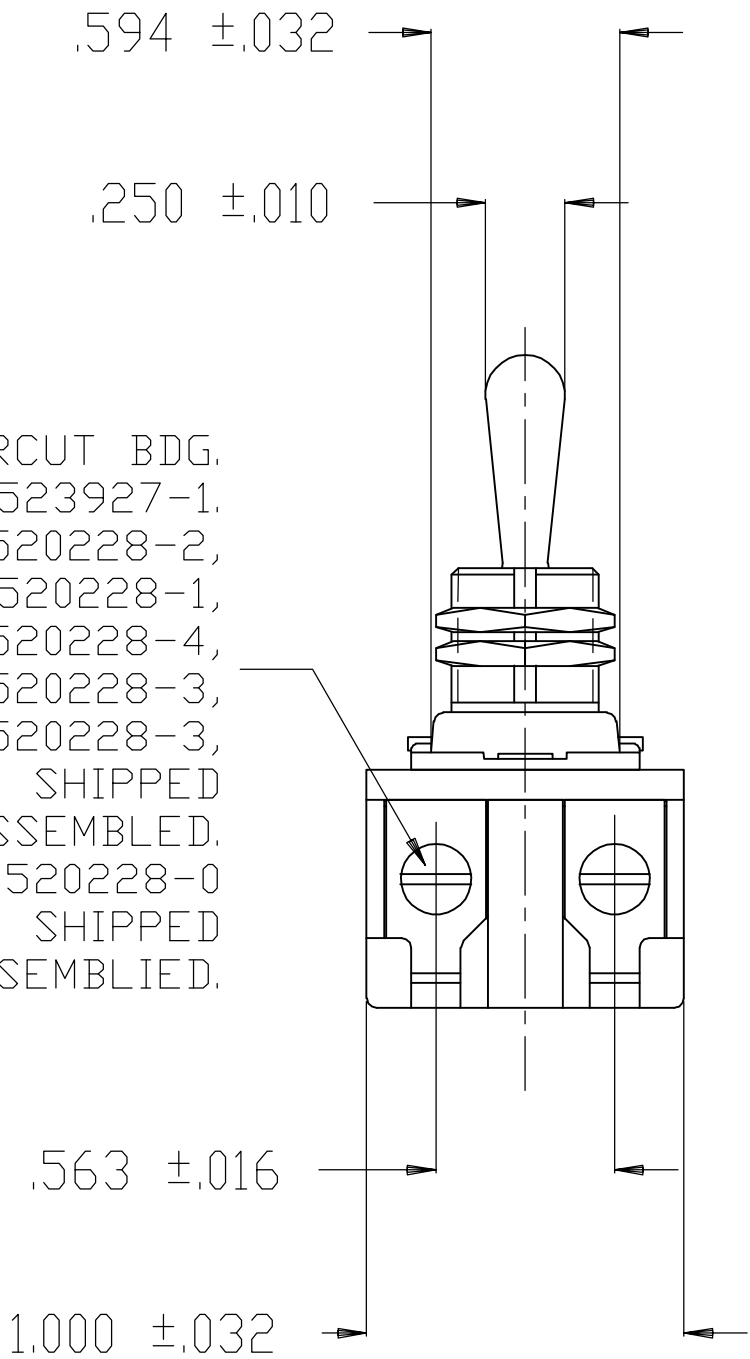
RELEASED FOR PUBLICATION

© COPYRIGHT - BY TYCO ELECTRONICS CORPORATION. ALL RIGHTS RESERVED.

LOC	DIST	REVISIONS					
		P	LTR	DESCRIPTION	DATE	DWN	APVD
AD	00		A	ECOG3G-0266-02	30SEP02	WL	WBH



6-32 X .250 LONG UNDERCUT BDG.
HD. SCREW, TYCO NO. 1523927-1.
SWITCHES 1520228-1, 1520228-2,
1520228-3, 1-1520228-1,
2-1520228-3, 2-1520228-4,
6520228-1, 6520228-2, 6520228-3,
1-6520228-1, 2-6520228-3,
2-6520228-4: QTY OF 4, SHIPPED
UNASSEMBLED.
SWITCH 1-1520228-0, 1-6520228-0
ONLY: QTY OF 4, SHIPPED
ASSEMBLED.



2-1520228-4/2-6520228-4	7360K8 T-PAK	15/32" THD - DIE CAST	DPST
2-1520228-3/2-6520228-3	7360K7 T-PAK	11/32" THD - DIE CAST	DPST
1-1520228-1/1-6520228-1	8910K219	15/32" THD - DIE CAST	DPST
1-1520228-0/1-6520228-0	8910K205	11/32" THD - DIE CAST	DPST
1520228-6/6520228-6	7362K4	15/32" THD - DIE CAST	SPST WITH BUSSING
1520228-3/6520228-3	7360K7	11/32" THD - DIE CAST	DPST
1520228-2/6520228-2	7359K3	15/32" THD - DIE CAST	DPST
1520228-1/6520228-1	7359K2	11/32" THD - DIE CAST	DPST
TYCO NO.	ARAB NO.	BUSHING / PLATE ASSY	DESCRIPTION

NOTES:
1. T-PAK - SWITCH AND HARDWARE INDIVIDUALLY PACKED IN PLASTIC BAGS BEFORE BEING PLACED IN A INTERMEDIATE BOX WHICH IS THEN PLACED IN A SHIPPING BOX. SEE TABLE.
2. P/N X-6520228-X IS ROHS COMPLIANT

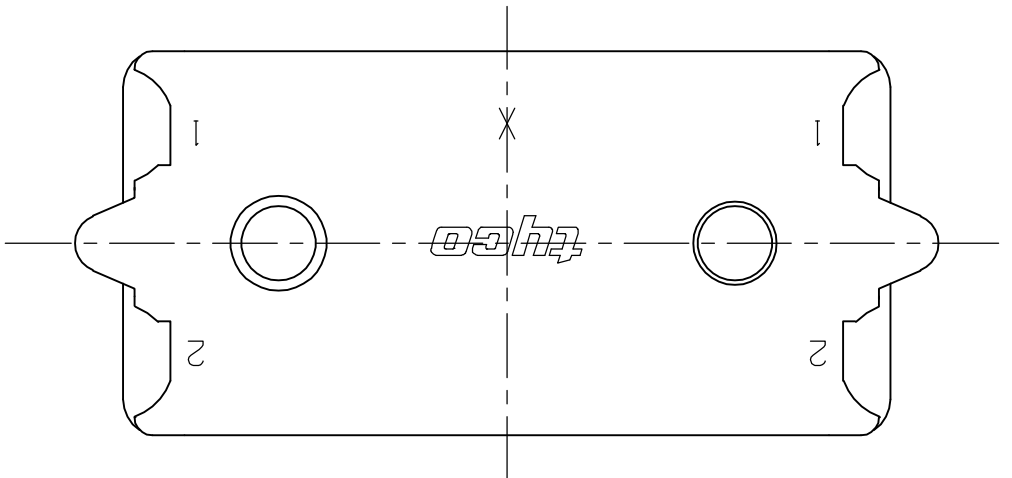
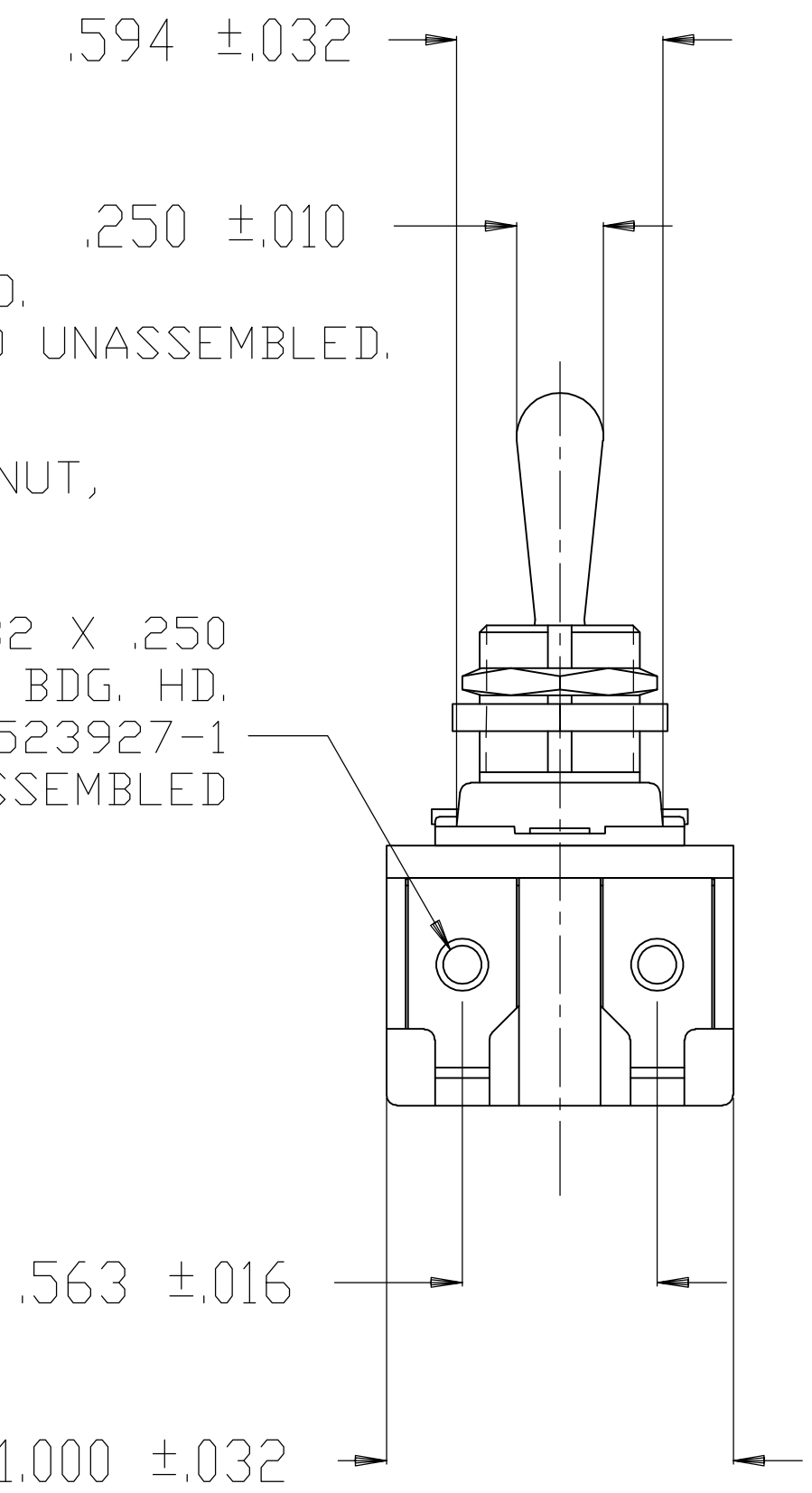
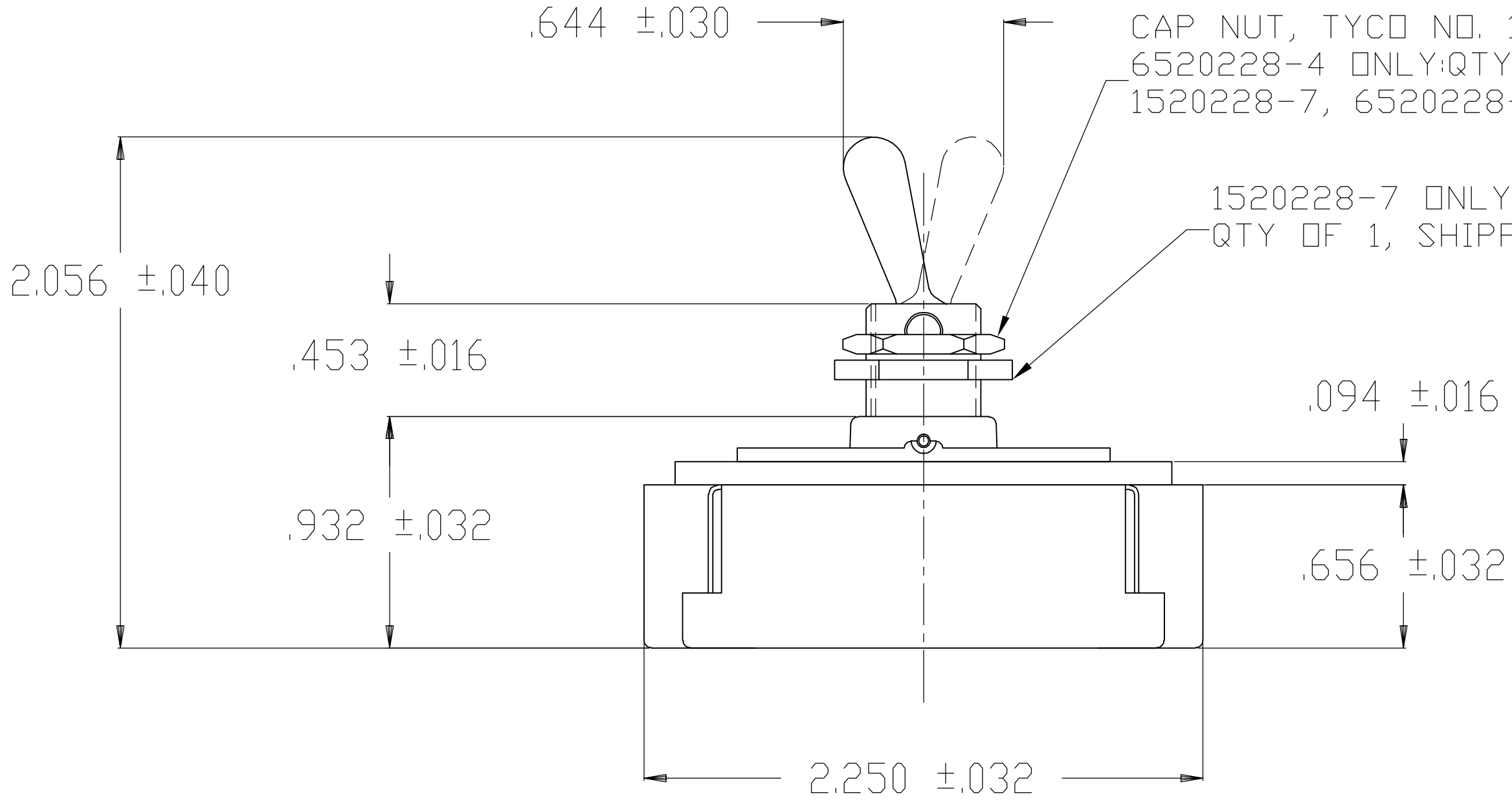
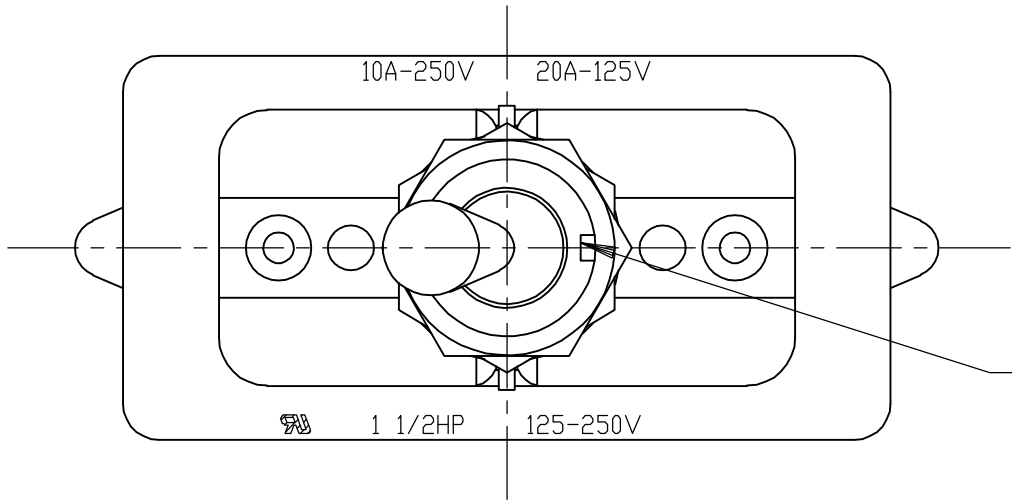
THIS DRAWING IS A CONTROLLED DOCUMENT.		DWN	26SEP02	tyco Electronics Tyco Electronics Corporation Arab, AL 35016			
		CHK	-				
DIMENSIONS: INCHES		APVD	-	NAME			
		PRODUCT SPEC		20 AMP 125V AC/DC, 10 AMP 250V AC/DC, 1 1/2 HP 125V/250V AC/DC, ONE HOLE MOUNTING TOOL HANDLE TOGGLE SWITCH			
		APPLICATION SPEC		SIZE CAGE CODE DRAWING NO			
MATERIAL		WEIGHT		A2 00779		C=1520228	
FINISH		CUSTOMER DRAWING		SCALE 1:1		SHEET 1 OF 4	
						REV B	

THIS DRAWING IS UNPUBLISHED.

RELEASED FOR PUBLICATION

© COPYRIGHT - BY TYCO ELECTRONICS CORPORATION. ALL RIGHTS RESERVED.

LOC		DIST		REVISIONS				
AD	00	P	LTR	DESCRIPTION	DATE	DWN	APVD	
			—	SEE SHEET 1	—	—	—	



NOTES

1. T-PAK - SWITCH AND HARDWARE INDIVIDUALLY PACKED IN PLASTIC BAGS BEFORE BEING PLACED IN AN INTERMEDIATE BOX WHICH IS THEN PLACED IN A SHIPPING BOX. SEE TABLE.

2. P/N X-6520228-X IS ROHS COMPLIANT.

1520228-7 / 6520228-7	8909K23	15/32" THD - DIE CAST	DPST T-PAK'ED W/ SPECIAL HARDWARE
1520228-4 / 6520228-4	7360K8	15/32" THD - DIE CAST	DPST
TYCO NO.	ARAB NO.	BUSHING / PLATE ASSY	DESCRIPTION

THIS DRAWING IS A CONTROLLED DOCUMENT.

DIMENSIONS:
INCHES

MATERIAL
-

TOLERANCES UNLESS OTHERWISE SPECIFIED:

0 PLC ± -
1 PLC ± -
2 PLC ± -
3 PLC ± -
4 PLC ± -
ANGLES ± -
FINISH -

DWN
W. HANSON
29APR93

CHK
W. Leonard
02MAY93

APVD
E. WESOLEK
03MAY93

PRODUCT SPEC
-

APPLICATION SPEC
-

WEIGHT
-

CUSTOMER DRAWING

tyco
Electronics

Tyco Electronics Corporation
Arab, AL 35016

NAME
20 AMP 125V AC/DC, 10 AMP 250V AC/DC,
1 1/2 HP 125V/250V AC/DC, ONE HOLE MOUNTING
TOOL HANDLE TOGGLE SWITCH

SIZE
A2

CAGE CODE
00779

DRAWING NO
C=1520228

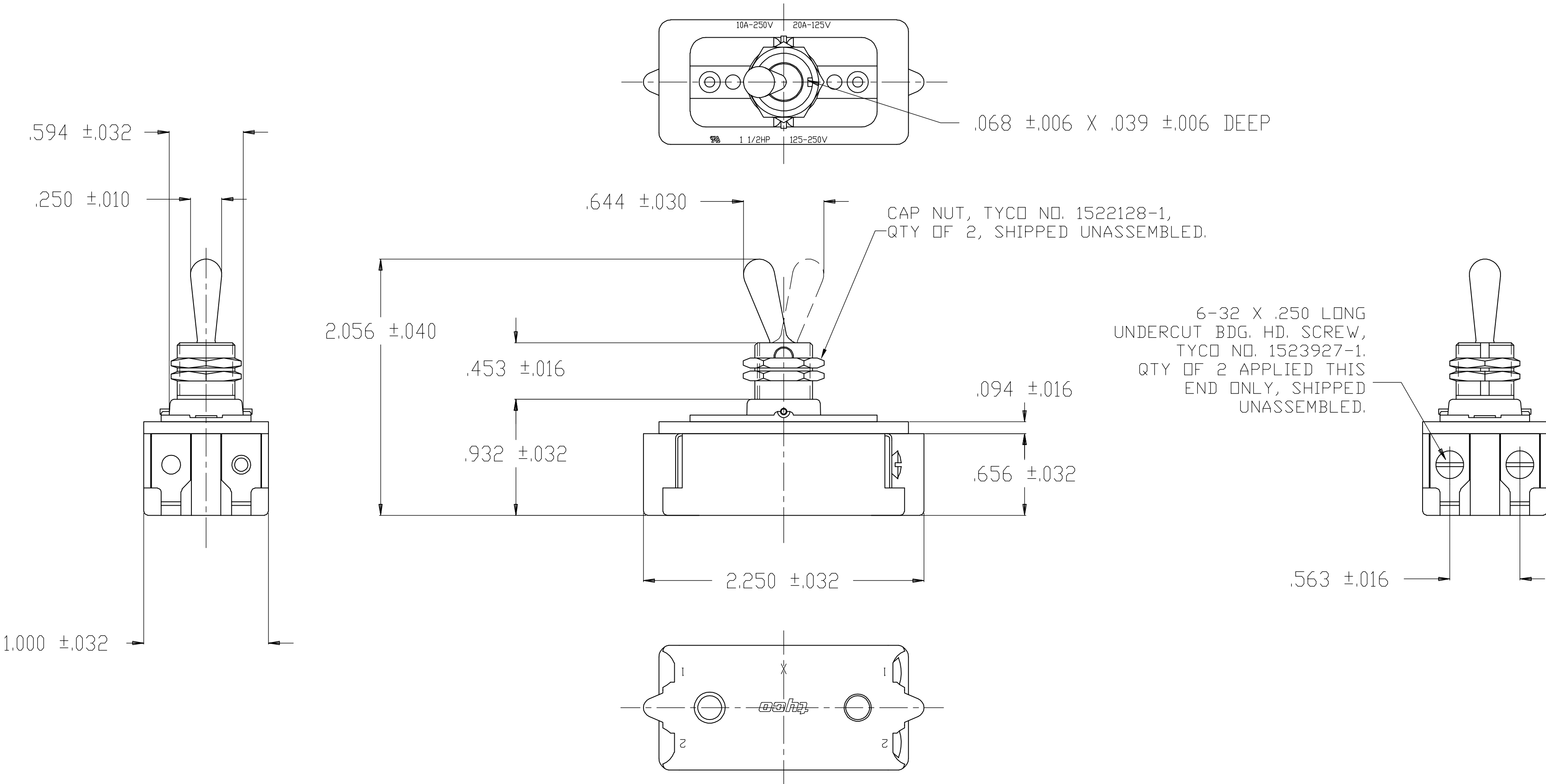
RESTRICTED TO
-

SCALE
1:1

SHEET
2

OF
4

REV
B



- NOTES
1. T-PAK - SWITCH AND HARDWARE INDIVIDUALLY PACKED IN PLASTIC BAGS BEFORE BEING PLACED IN A INTERMEDIATE BOX WHICH IS THEN PLACED IN A SHIPPING BOX. SEE TABLE.
 2. PLY-□-PAK - SWITCH AND HARDWARE INDIVIDUALLY PACKED IN PLASTIC BAGS BEFORE BEING PACKED LOOSE IN A SHIPPING BOX. SEE TABLE.
 3. P/N X-6520228-X IS ROHS COMPLIANT.

2-1520228-5/2-6520228-5	7361K5 T-PAK	15/32" THD - DIE CAST	SPST
1520228-9/ 6520228-9	8910K191	15/32" THD - DIE CAST	SPST (PLY-□-PAK)
1520228-5/ 6520228-5	7361K5	15/32" THD - DIE CAST	SPST
TYCO NO.	ARAB NO.	BUSHING / PLATE ASSY	DESCRIPTION

THIS DRAWING IS A CONTROLLED DOCUMENT.

DIMENSIONS:
INCHES

MATERIAL

—

TOLERANCES UNLESS OTHERWISE SPECIFIED:

0 PLC	±	—
1 PLC	±	—
2 PLC	±	—
3 PLC	±	—
4 PLC	±	—
ANGLES	±	—
FINISH	—	—

APVD

M.R. DUMMER

18DEC77

PRODUCT SPEC

APPLICATION SPEC

WEIGHT

—

CUSTOMER DRAWING

DWN

J. SMITH

13DEC77

CHK

R. GLENN

13DEC77

APVD

M.R. DUMMER

18DEC77

PRODUCT SPEC

APPLICATION SPEC

WEIGHT

—

CUSTOMER DRAWING

tyco
Electronics

Tyco Electronics Corporation
Arab, AL 35016

NAME

20 AMP 125V AC/DC, 10 AMP 250V AC/DC,
1 1/2 HP 125V/250V AC/DC, ONE HOLE MOUNTING
TOOL HANDLE TOGGLE SWITCH

SIZE

A2

CAGE CODE

00779

DRAWING NO

C=1520228

RESTRICTED TO

—

SCALE

1:1

SHEET

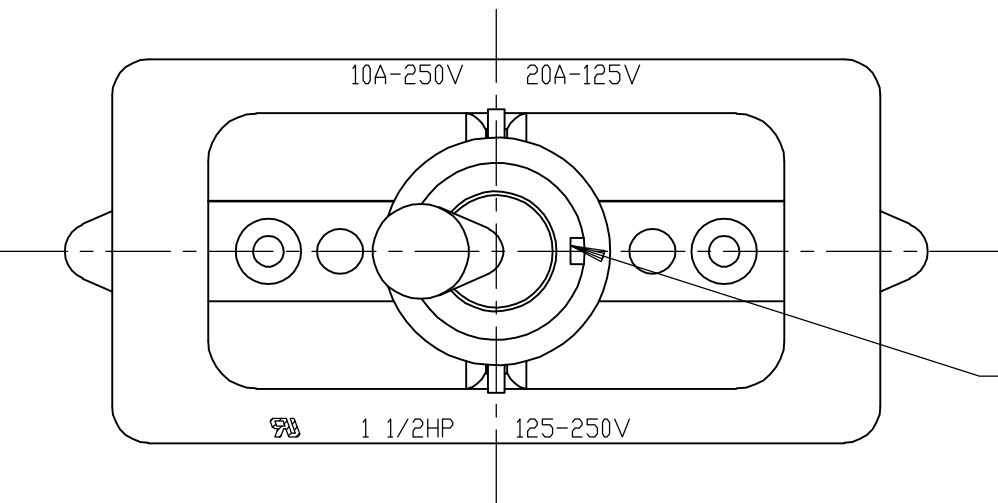
3

OF

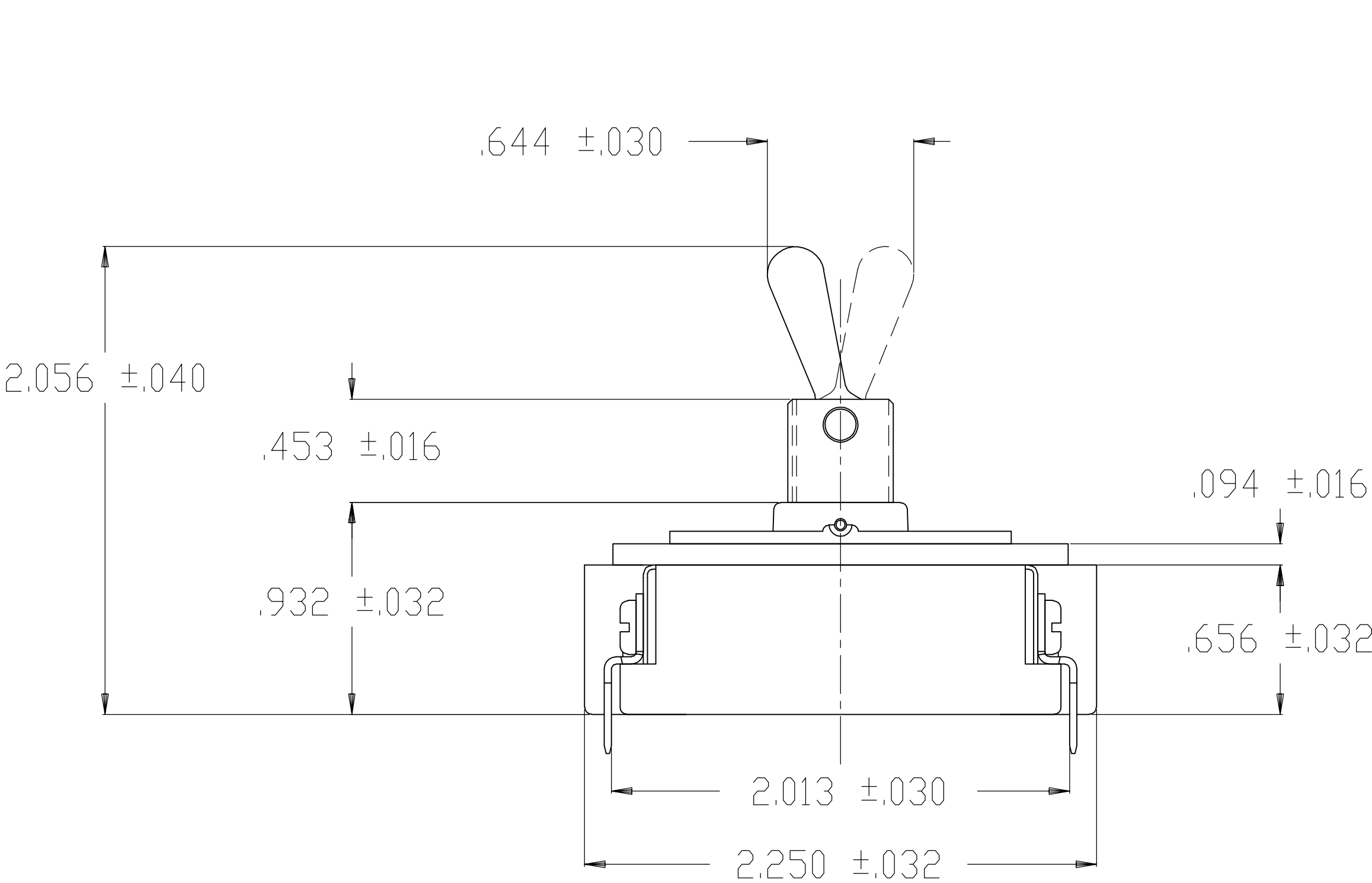
4

REV

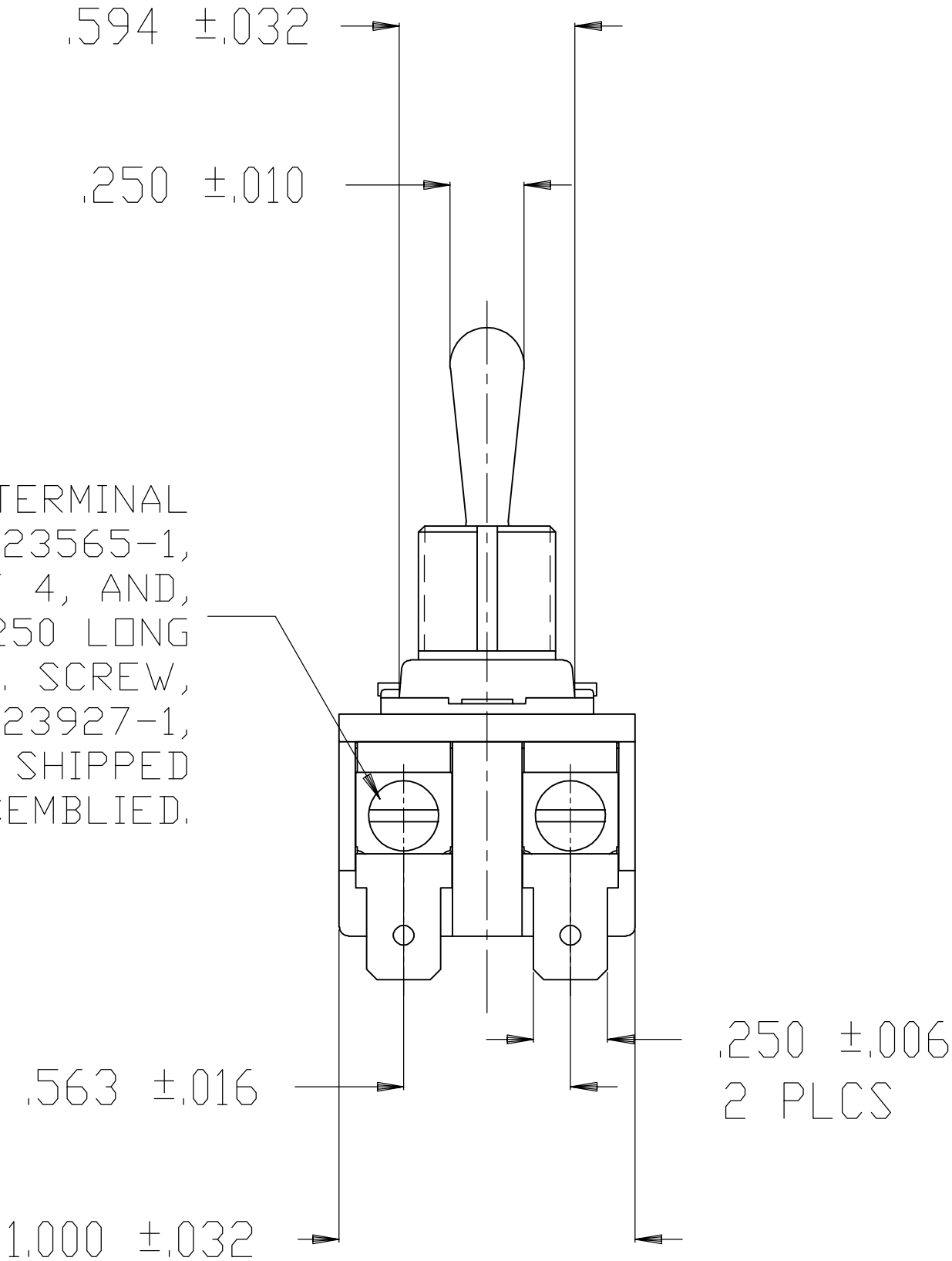
B



.068 ±.006 X .039 ±.006 DEEP



QUICK CONNECT TERMINAL
TYCO NO. 1523565-1,
QTY OF 4, AND,
6-32 X .250 LONG
UNDERCUT BDG. HD. SCREW,
TYCO NO. 1523927-1,
QTY OF 4, SHIPPED
ASSEMBLED.



NOTES:
1. P/N X-6520228-X IS ROHS COMPLIANT.

1520228-8/6520228-8	8910K12	15/32" THD - DIE CAST	DPST
TYCO NO.	ARAB NO.	BUSHING / PLATE ASSY	DESCRIPTION

THIS DRAWING IS A CONTROLLED DOCUMENT.		DWN T. CHRISTENSEN 25OCT95	tyco Tyco Electronics Corporation Arab, AL 35016			
DIMENSIONS: INCHES		CHK W. HANSON 01NOV95	NAME			
		APVD M.R. DUMMER 09NOV95	20 AMP 125V AC/DC, 10 AMP 250V AC/DC, 1 1/2 HP 125V/250V AC/DC, ONE HOLE MOUNTING TOOL HANDLE TOGGLE SWITCH			
		PRODUCT SPEC	SIZE CAGE CODE DRAWING NO RESTRICTED TO			
MATERIAL		FINISH	A2 00779		C=1520228	
			CUSTOMER DRAWING		SCALE 1:1	SHEET 4 OF 4 REV B

Mouser Electronics

Authorized Distributor

Click to View Pricing, Inventory, Delivery & Lifecycle Information:

[TE Connectivity:](#)

[6520228-8](#) [6520228-5](#)