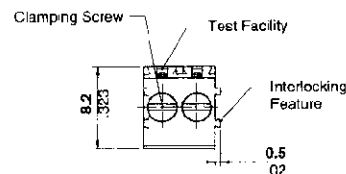
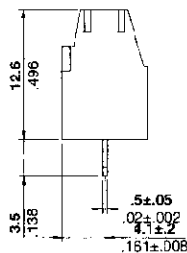
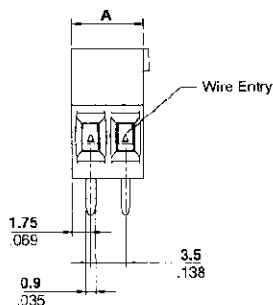
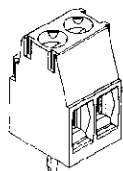


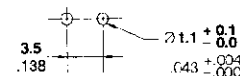
BOARD MOUNT, SIDE WIRE ENTRY

Board Mount w/Interlock,
3.5 mm Centerline,
Side Wire Entry

UL Rating – 300 V, 12 A
14-30 AWG



Recommended PC Board Layout



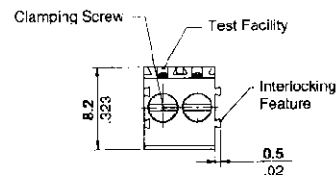
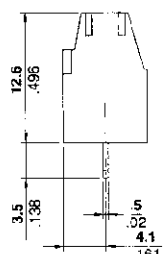
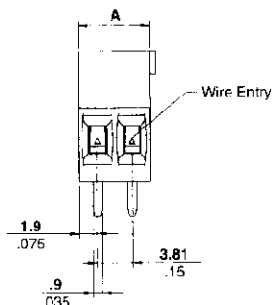
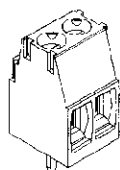
Suggested Screw Torque—
2.2 in.-lbs.

No. of Positions	Dim. A	Part Numbers	
		Green	Blue
2	7.0 [0.276]	284391-2	1546227-2
3	10.5 [0.413]	284391-3	1546227-3
4	14.0 [0.551]	284391-4	1546227-4
5	17.5 [0.689]	284391-5	1546227-5
6	21.0 [0.827]	284391-6	1546227-6
7	24.5 [0.965]	284391-7	1546227-7
8	28.0 [1.102]	284391-8	1546227-8
9	31.5 [1.240]	284391-9	1546227-9
10	35.0 [1.378]	1-284391-0	1-1546227-0
11	38.5 [1.516]	1-284391-1	1-1546227-1
12	42.0 [1.654]	1-284391-2	1-1546227-2
13	45.5 [1.791]	1-284391-3	1-1546227-3

No. of Positions	Dim. A	Part Numbers	
		Green	Blue
14	49.0 [1.929]	1-284391-4	1-1546227-4
15	52.5 [2.067]	1-284391-5	1-1546227-5
16	56.0 [2.205]	1-284391-6	1-1546227-6
17	59.5 [2.343]	1-284391-7	1-1546227-7
18	63.0 [2.480]	1-284391-8	1-1546227-8
19	66.5 [2.618]	1-284391-9	1-1546227-9
20	70.0 [2.756]	2-284391-0	2-1546227-0
21	73.5 [2.894]	2-284391-1	2-1546227-1
22	77.0 [3.031]	2-284391-2	2-1546227-2
23	80.5 [3.169]	2-284391-3	2-1546227-3
24	84.0 [3.307]	2-284391-4	2-1546227-4
25	87.5 [3.445]	2-284391-5	2-1546227-5

Board Mount w/Interlock,
3.81 mm Centerline,
Side Wire Entry
Color – Green

UL Rating – 300 V, 12 A
14-30 AWG



Recommended PC Board Layout



Suggested Screw Torque—
2.2 in.-lbs.

No. of Positions	Dim. A	Part Numbers	
		Green	Blue
2	7.62 [0.300]	284392-2	
3	11.43 [0.450]	284392-3	
4	15.24 [0.600]	284392-4	
5	19.05 [0.750]	284392-5	
6	22.86 [0.900]	284392-6	
7	26.67 [1.050]	284392-7	
8	30.48 [1.200]	284392-8	
9	34.29 [1.350]	284392-9	
10	38.10 [1.500]	1-284392-0	
11	41.91 [1.650]	1-284392-1	
12	45.72 [1.800]	1-284392-2	
13	49.53 [1.950]	1-284392-3	

No. of Positions	Dim. A	Part Numbers	
		Green	Blue
14	53.34 [2.100]	1-284392-4	
15	57.15 [2.250]	1-284392-5	
16	60.96 [2.400]	1-284392-6	
17	64.77 [2.550]	1-284392-7	
18	68.58 [2.700]	1-284392-8	
19	72.39 [2.850]	1-284392-9	
20	76.20 [3.000]	2-284392-0	
21	80.01 [3.150]	2-284392-1	
22	83.82 [3.300]	2-284392-2	
23	87.63 [3.450]	2-284392-3	
24	91.44 [3.600]	2-284392-4	
25	95.25 [3.750]	2-284392-5	

Dimensions are shown for reference purposes only.
Specifications subject to change.

Dimensions are in millimeters and inches unless otherwise specified.
Values in brackets are metric equivalents.

Before ordering, see cross reference starting on page 321 for equivalent Tyco Electronics part numbers.

If no equivalent part number is listed, contact Technical Support at 1-800-522-6752.
www.tycoelectronics.com

Mouser Electronics

Authorized Distributor

Click to View Pricing, Inventory, Delivery & Lifecycle Information:

[TE Connectivity:](#)

[1546227-3](#) [1546227-4](#) [1546227-5](#) [1546227-6](#)