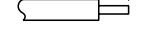
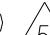


8		7	
THIS DRAWING IS UNPUBLISHED.		RELEASED FOR PUBLICATION	
2016		2016	
© COPYRIGHT 20		BY -	
ALL RIGHTS RESERVED.			
PART NUMBER	REVISION	DESCRIPTION	FEED TYPE
2234095-1	C	FINE CRIMP HEIGHT ADJUST	MECHANICAL
2234095-2	C	FINE CRIMP HEIGHT ADJUST	PNEUMATIC
7-2234095-1	C	MECHANICAL AND CRIMP TOOLING KIT	MECHANICAL
7-2234095-2	C	PNEUMATIC AND CRIMP TOOLING KIT	PNEUMATIC
7-2234095-7	A	CRIMP TOOLING KIT	-

APPLICATOR DATA		
CRIMP	SIZE	TYPE
WIRE	1.07 mm [ .042]	F
INSUL	1.58 mm [ .062]	O
APPLICATOR INSTRUCTIONS 408-35042		

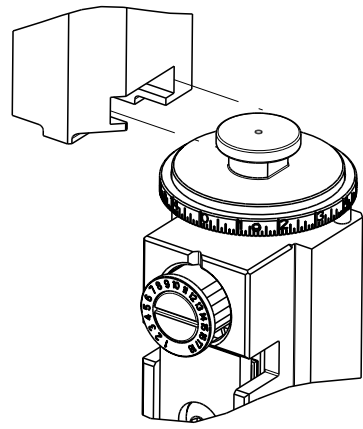
TERMINAL DATA: TE TERMINAL		TE CRIMP SPECIFICATION	
TERMINAL NAME: AMPMODU CRIMP SNAP-IN 22-26 AWG			
WIRE STRIP LENGTH			INSULATION DIAMETER RANGE
3.18-3.96 mm [.125-.156 IN]			Ø 1.52mm MAX [.060 IN MAX]
TERMINAL APPLICATION SPECIFICATION	114-25038	-	-
TERMINALS APPLIED 			
TE TERMINAL	TE TERMINAL	TE TERMINAL	TE TERMINAL
104480-2	104480-3	104480-4	1-104480-2
1-104480-3	1-104480-7		

WIRE SIZE	CRIMP HEIGHT mm [INCH]	CRIMP HEIGHT REFERENCE SETTING
22 AWG	0.91+/-0.05 [ .036+/- .002]	8.0
24 AWG	0.81+/-0.05 [ .032+/- .002]	9.0
26 AWG	0.76+/-0.05 [ .030+/- .002]	9.7





- 1 RECOMMENDED SPARE PARTS
- 2 REFER TO SUPPLIED INSTRUCTION SHEET FOR CLEANING, LUBRICATION AND STORAGE OF APPLICATOR.
- 3 APPLY PART NUMBER 2-23419-6 LOCTITE TO THREADS OF ITEM 242.
- 4 CRIMP HEIGHT REFERENCE SETTING WAS THE SETTING USED WHEN THE APPLICATOR WAS QUALIFIED AT THE FACTORY. ADJUSTMENT MAY BE NECESSARY WHEN RUNNING APPLICATOR IN THE FIELD.
- 5 TERMINAL LUBRICANT IS RECOMMENDED.
6. UNLESS SPECIFIED OTHERWISE TORQUE VALUES SHALL BE USED PER DOCUMENT, 101-35000.

ATLANTIC VERSION TERMINATOR  
INTERFACE ADAPTER



-		1	1	1	1	2280441-1	INSERT, SHEAR	282
-		1	-	1	-	2119641-1	FEED CAM, AIR FEED	248
-		1	1	1	1	2119082-8	CAM, SNAIL, INSULATION ADJUSTMENT	244
-		1	1	1	1	2079764-1	WASHER, WAVE SPRING, CREST-TO-CREST	243
-		1	1	1	1	2119083-1	RETAINER, INSULATION DIAL	242
-		2	2	2	2	7-18023-7	SCR, SKT HD CAP M3 X 4.0	241
-		-	1	-	1	2119580-1	MECHANICAL FEED ASSEMBLY	239
-		1	-	1	-	2844940-1	AIR FEED MODULE	238
-		1	1	1	1	1-356885-4	STOP, SHEAR	237
-		REF	REF	REF	REF	994970-2	COUNTER, MAGNETIC	164
-		1	1	1	1	1-22281-8	SPRING, COMPRESSION	121
-		1	1	1	1	2119955-1	ASSY, LUBRICATOR, SIDE FEED	113
-		1	1	1	1	2844908-1	SCREW, LOCKING	99
-		1	1	1	1	2844907-1	POST, LOCKING	98
-		1	1	1	1	690438-1	FRONT STRIP GUIDE	96
-		4	4	4	4	2168083-1	SCR, SKT HD CAP, RoHS, M3 X 8.0	95
-		1	1	1	1	2168083-6	SCR, SKT HD CAP, RoHS, M5 X 65	93
-		1	1	1	1	455888-6	SPACER, CRIMPER	82
-		1	1	1	1	240641-2	SPACER	81
-		1	1	1	1	1803607-3	DOCUMENTATION PACKAGE	71
-		1	1	1	1	2119791-9	DEPRESSOR, WIRE	70
-		1	1	1	1	2119740-1	TAG,IDENTIFICATION	67
-		2	2	2	2	2168078-1	SCREW, DRIVE, RH, RoHS, 2 x .188	66
-		2	2	2	2	2-18032-5	SCR, SET, FLT PNT, M5 X 20.0	61
-		1	1	1	1	2168083-2	SCR, SKT HD CAP, RoHS, M4 X 8.0	60
-		1	1	1	1	5-18022-5	SCR, HEX HD CAP, M4 X 6.0	59
-		1	1	1	1	1338683-1	FEED PAWL	56
-		4	4	4	4	2168083-3	SCR, SKT HD CAP, RoHS, M4 X 12.0	54
-		2	2	2	2	2-2168083-5	SCR, SKT HD CAP, RoHS, M4 X 14	53
-		1	2	1	2	18023-9	SCR, SKT HD CAP M4 X 6.0	49
-		-	1	-	1	2119652-1	FEED CAM, PRE FEED	48
-		-	1	-	1	2119653-1	FEED CAM, POST FEED	47
-		1	1	1	1	1803583-9	APPLICATOR BASIC ASSEMBLY, SF	46
-		1	1	1	1	1803515-1	RAM ASSEMBLY, SF ATLANTIC	44
-		1	1	1	1	1803602-1	SCR, BHSC, RoHS (M8 X 25)	41
-		1	1	1	1	2305692-1	PLATE, REAR STRIP GUIDE	29
-		1	1	1	1	455888-5	SPACER, CRIMPER	28
-		2	2	2	2	22283-1	SPRING, COMPRESSION	27
-		1	1	1	1	356835-1	LEVER, DRAG RELEASE	26
-		1	1	1	1	240792-1	DRAG, TERMINAL	25
-		1	1	1	1	189124-7	GUIDE, FRONT STRIP	24
-		1	1	1	1	980371-4	SCR, SKT HD SHLDR 5.0 DIA X 6.0	23
-		1	1	1	1	2168083-2	SCR, SKT HD CAP, RoHS, M4 X 8.0	21
-		3	3	3	3	1-18028-2	WASHER, FLAT, REG M4	20
-		1	1	1	1	2119533-4	STRIPPER, SIDE FEED	19
-		1	1	1	1	690518-1	HOLD DOWN, TERMINAL	18
-		1	1	1	1	690463-1	FLOATING SHEAR, REAR	17
-		2	2	2	2	1-2168083-1	SCR, SKT HD CAP, RoHS, M3 X 6	16
-		1	1	1	1	1-690691-3	PLATE,REAR SHEAR	15
-		1	1	1	1	2119862-1	SHEAR HOLDER, REAR	14
-		1	1	1	1	2119806-1	INSERT, SHEAR	13
-		2	2	2	2	3-22280-3	SPRING, COMPRESSION	12
-		1	1	1	1	1-356885-4	STOP, SHEAR	11
-		1	1	1	1	2119805-1	SHEAR HOLDER, FRONT	10
-		1	1	1	1	1803095-3	FLOATING SHEAR, FRONT	9
1		2	2	1	1	9-1803058-8	ANVIL, COMBINATION	8
-		1	1	1	1	1-690468-8	DEPRESSOR SHEAR, REAR	6
-		1	1	1	1	2119757-1	DEPRESSOR, SHEAR	5
-		1	1	1	1	238011-7	BLOCK, CRIMPER SPACER	4
1		1	2	2	1	1633966-6	CRIMPER, INSULATION O	3
-		1	1	1	1	455888-3	SPACER, CRIMPER	2
1		1	2	2	1	1633860-4	CRIMPER, WIRE	1
-77-72-71		-2	-1			PART NO	DESCRIPTION	ITEM NO

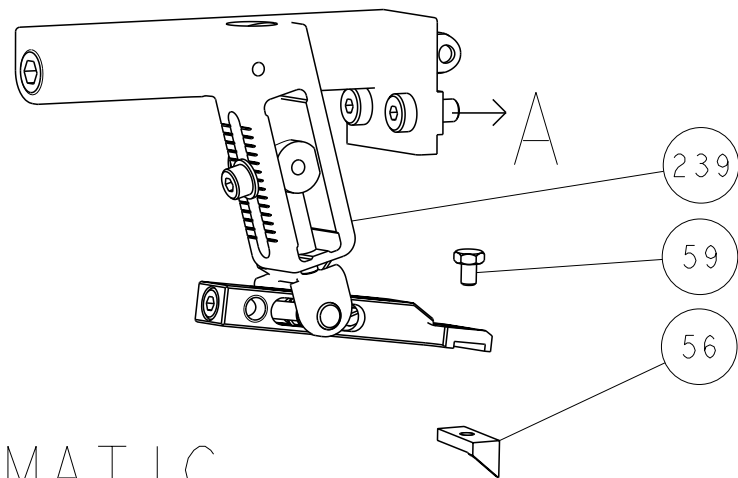
ATLANTIC VERSION  
Shown on sheets 1 of 4 & 2 of 4  
(Pacific version shown on sheets 3 of 4 & 4 of 4)

THIS DRAWING IS A CONTROLLED DOCUMENT.		OWN C. MOYER	25AUG2011	 TE Connectivity	
DIMENSIONS:		CHK T. ELBIN	25AUG2011		
mm		APVD T. ELBIN	25AUG2011		
TOLERANCES UNLESS OTHERWISE SPECIFIED:		PRODUCT SPEC			
		APPLICATION SPEC		NAME Ocean Side Feed Applicator	
0 PLC ±		-		SIZE	
1 PLC ±		-		CAGE CODE	
2 PLC ±		-		DRAWING NO	
3 PLC ±		-		RESTRICTED TO	
4 PLC ±		-		A1 - C=2234095	
ANGLES FINISH ±		WEIGHT		SCALE	
MATERIAL		CUSTOMER ACCESSIBLE PRODUCTION DRAWING		SHEET 1 of 4	
-		-		REV C	

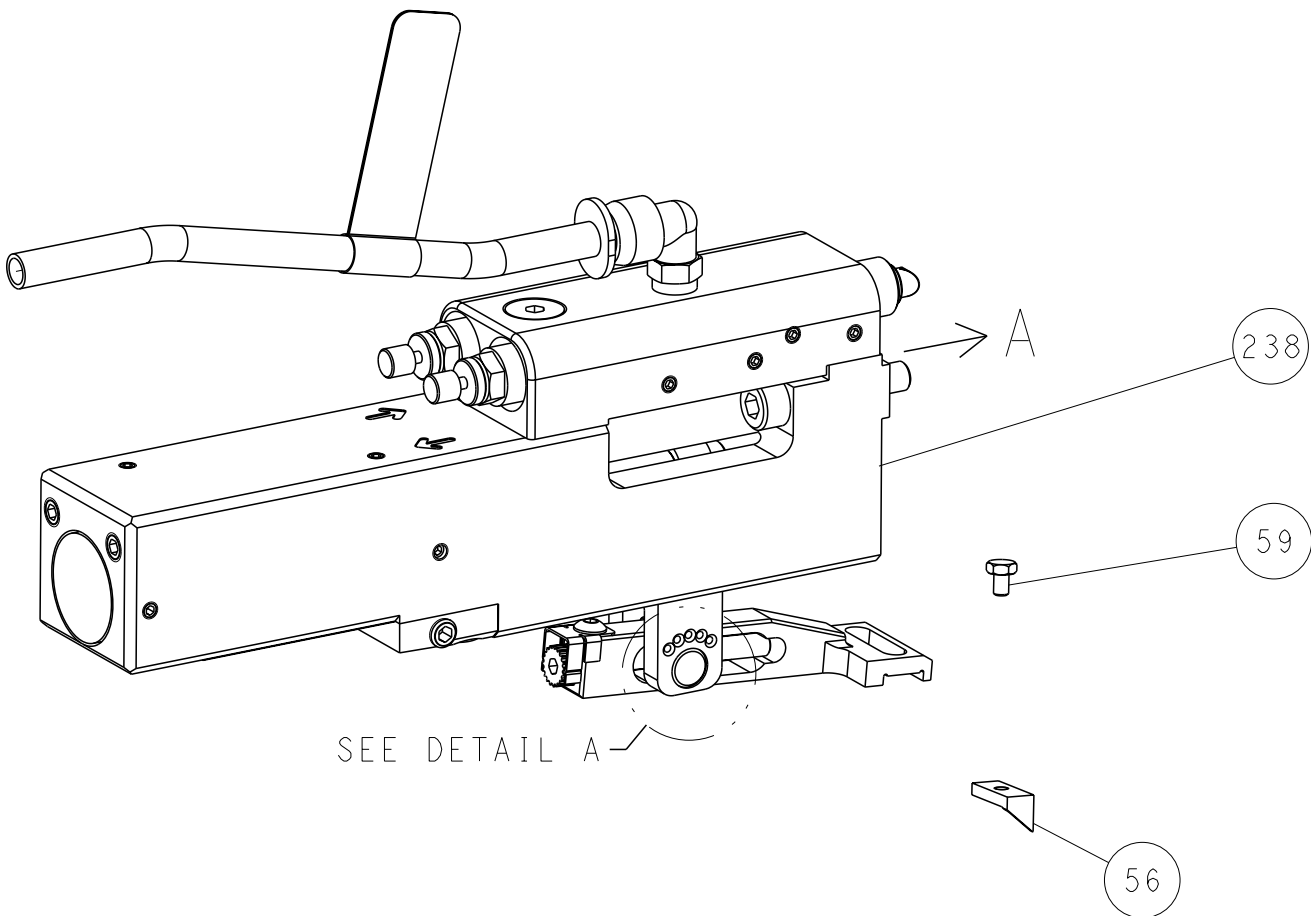
SHEETS 3 & 4 ARE NOT REQUIRED FOR ATLANTIC VERSION

REVISIONS				
P	LYR	DESCRIPTION	DATE	APVD
-	-	SEE SHEET 1	-	-

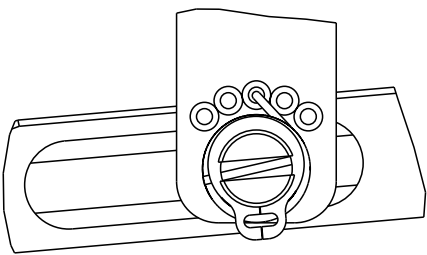
FEED TYPE  
MECHANICAL



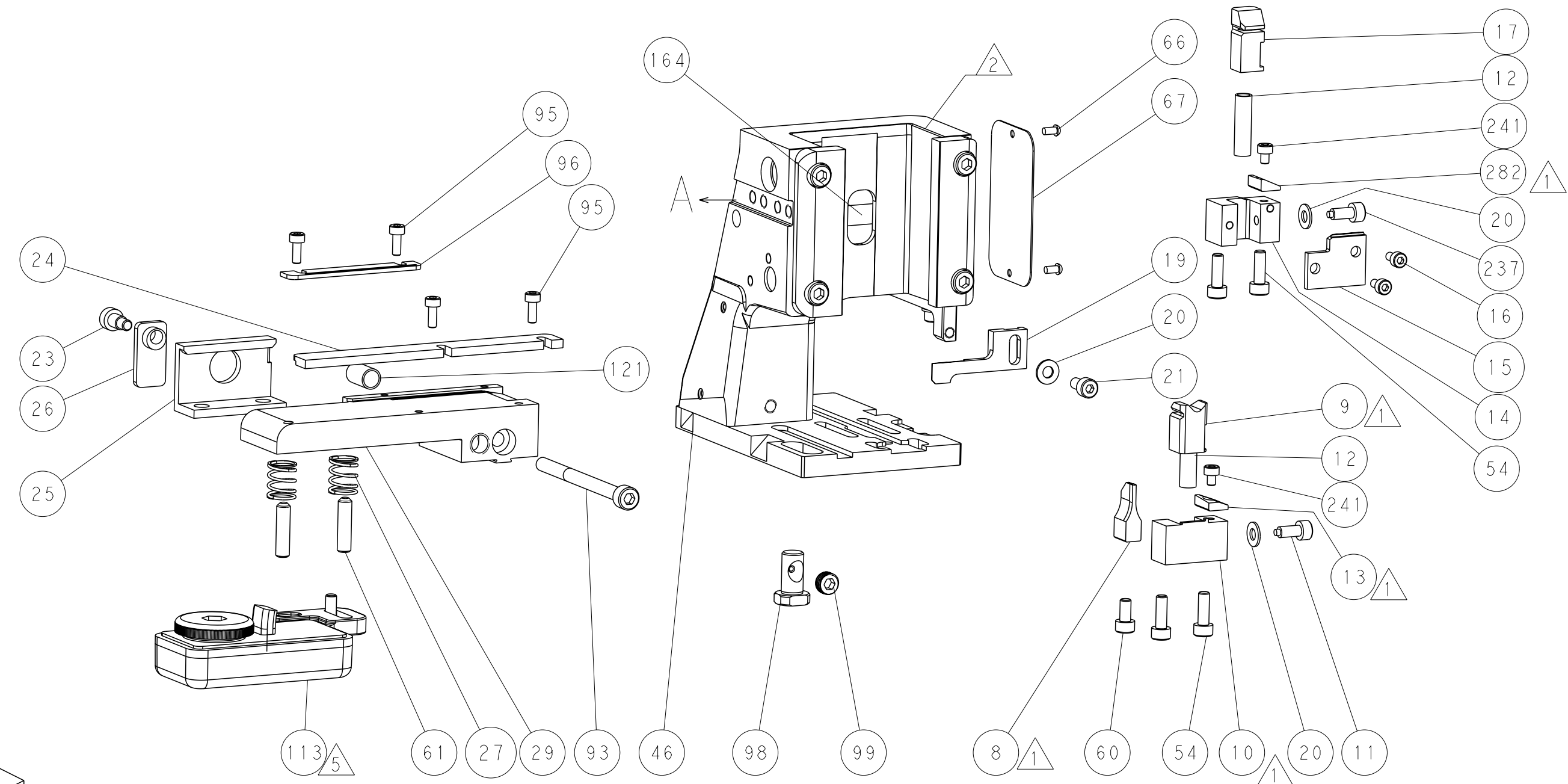
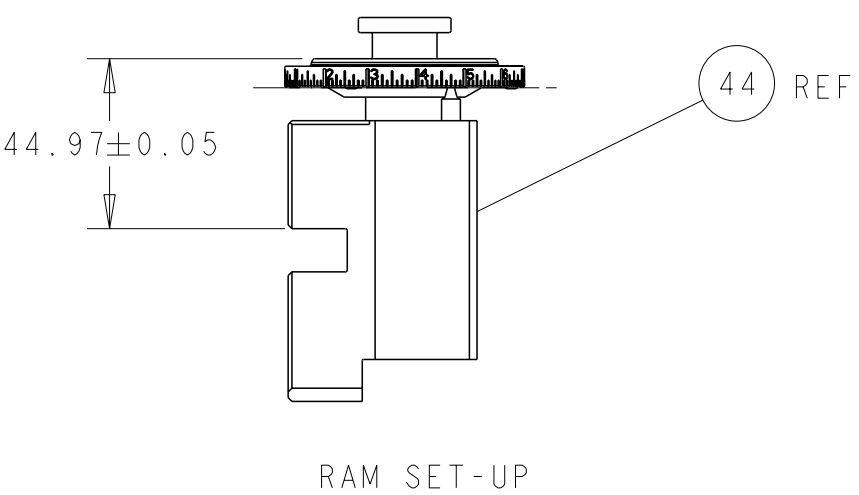
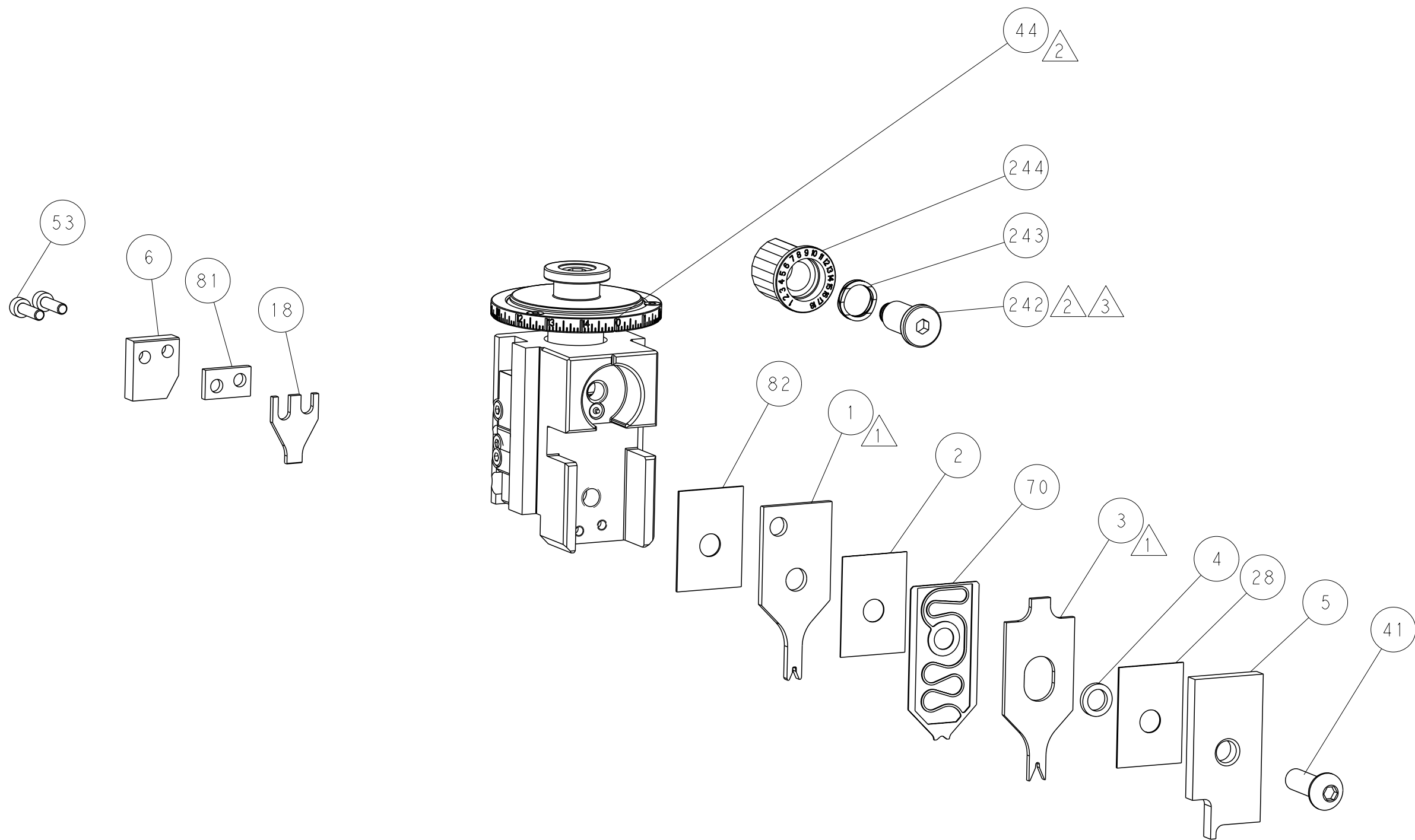
PNEUMATIC



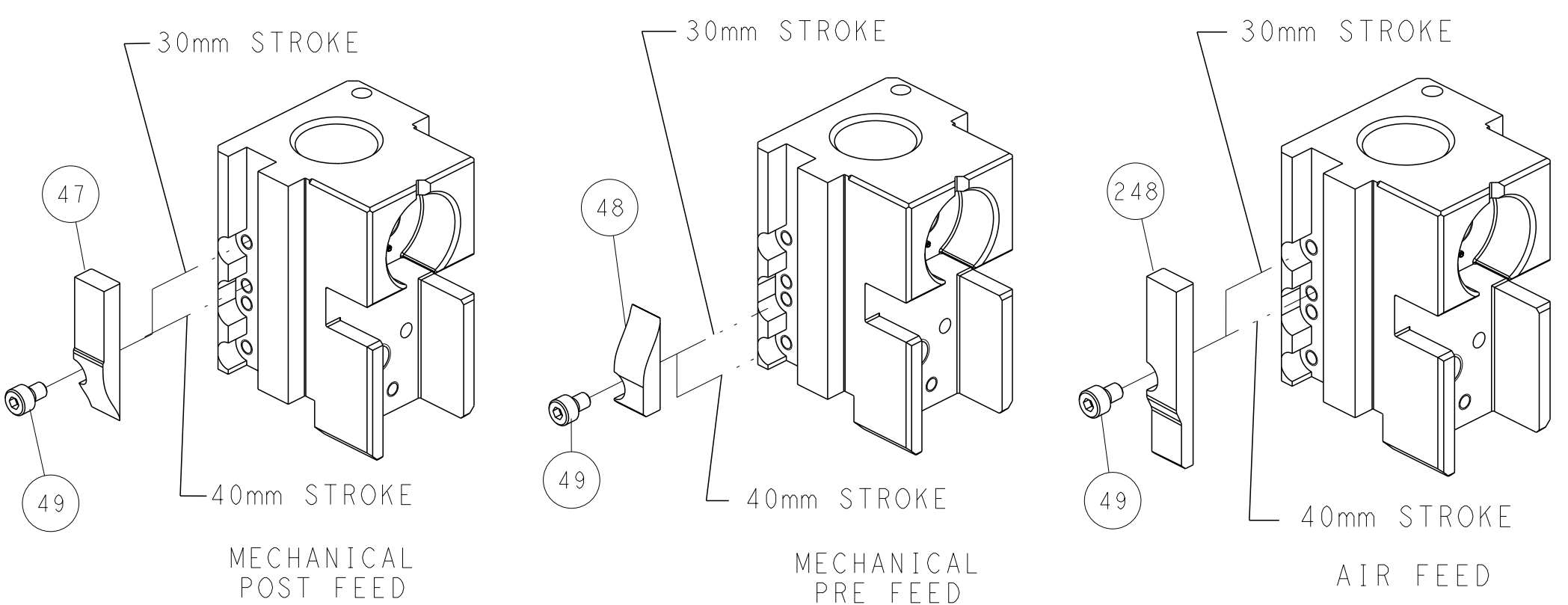
FEED SPRING SETTING POSITION  
(SHOWN FROM REAR SIDE)



DETAIL A



CAM POSITIONS

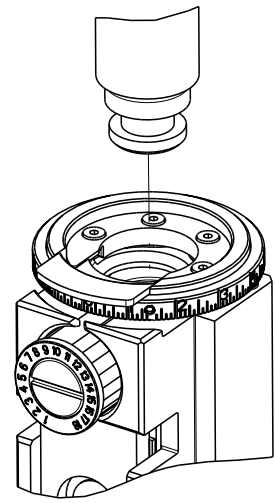


ATLANTIC VERSION  
Shown on sheets 1 of 4 & 2 of 4  
(Pacific version shown on sheets 3 of 4 & 4 of 4)

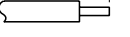

THIS DRAWING IS A CONTROLLED DOCUMENT.		DWN C. MOYER 25AUG2011	TE Connectivity	
DIMENSIONS:		CHK T. ELBIN 25AUG2011		
TOLERANCES UNLESS OTHERWISE SPECIFIED:		APVD T. ELBIN 25AUG2011	NAME Ocean Side Feed Applicator	
mm		PRODUCT SPEC.	SIZE A1	
0 PLC ±		APPLICATION SPEC.	CAGE CODE -	
1 PLC ±		WEIGHT	DRAWING NO. C=2234095	
2 PLC ±		CUSTOMER ACCESSIBLE PRODUCTION DRAWING	RESTRICTED TO	
3 PLC ±		SCALE 1:2	SHEET 2 of 4	
4 PLC ±		REV C	SHEETS 3 & 4 ARE NOT REQUIRED FOR ATLANTIC VERSION	
ANGLES				
FINISH				
MATERIAL				
-				
-				

8	7	6	5	4	3	2	1
THIS DRAWING IS UNPUBLISHED.		RELEASED FOR PUBLICATION		2016			
© COPYRIGHT 20		BY -		ALL RIGHTS RESERVED.			
PART NUMBER	REVISION	DESCRIPTION		FEED TYPE			
2-2234095-1	C	FINE CRIMP HEIGHT ADJUST		MECHANICAL			
2-2234095-2	C	FINE CRIMP HEIGHT ADJUST		PNEUMATIC			
7-2234095-7	A	CRIMP TOOLING KIT		-			

PACIFIC VERSION TERMINATOR  
INTERFACE ADAPTER



APPLICATOR DATA		
CRIMP	SIZE	TYPE
WIRE	1.07 mm [ .042 ]	F
INSUL	1.58 mm [ .062 ]	O
APPLICATOR INSTRUCTIONS 408-35042		

TERMINAL DATA: TE TERMINAL		TE CRIMP SPECIFICATION	
TERMINAL NAME: AMPMODU CRIMP SNAP-IN 22-26 AWG			
WIRE STRIP LENGTH 3.18-3.96 mm [.125-.156 IN]			INSULATION DIAMETER RANGE Ø 1.52mm MAX [.060 IN MAX]
TERMINAL APPLICATION SPECIFICATION	114-25038	-	-
TERMINALS APPLIED 			
TE TERMINAL	TE TERMINAL	TE TERMINAL	TE TERMINAL
104480-2	104480-3	104480-4	1-104480-2
1-104480-3	1-104480-7		

WIRE SIZE		CRIMP HEIGHT mm [ INCH ]		CRIMP HEIGHT REFERENCE SETTING
22 AWG		0.91+/-0.05 [ .036+/- .002 ]		8.0
24 AWG		0.81+/-0.05 [ .032+/- .002 ]		9.0
26 AWG		0.76+/-0.05 [ .030+/- .002 ]		9.7



1. RECOMMENDED SPARE PARTS
2. REFER TO SUPPLIED INSTRUCTION SHEET FOR CLEANING, LUBRICATION AND STORAGE OF APPLICATOR.
3. APPLY PART NUMBER 2-23419-6 LOCTITE TO THREADS OF ITEM 242.
4. CRIMP HEIGHT REFERENCE SETTING WAS THE SETTING USED WHEN THE APPLICATOR WAS QUALIFIED AT THE FACTORY. ADJUSTMENT MAY BE NECESSARY WHEN RUNNING APPLICATOR IN THE FIELD.
5. TERMINAL LUBRICANT IS RECOMMENDED.
6. UNLESS SPECIFIED OTHERWISE TORQUE VALUES SHALL BE USED PER DOCUMENT, 101-35000.

\*WARNING  
ON INSTALLATION, SET WIRE DISC TO CRIMP HEIGHT REFERENCE SETTING FOR LARGEST WIRE SIZE. CRIMP HEIGHT REFERENCE SETTINGS GREATER THAN THE VALUE SHOWN MAY CAUSE DAMAGE TO THE CRIMP TOOLING, REFER TO THE INSTRUCTION SHEET FOR PROPER SETUP AND ADJUSTMENTS.

PACIFIC VERSION  
Shown on sheets 3 of 4 & 4 of 4  
(Atlantic version shown on sheets 1 of 4 & 2 of 4)



REVISONS				
#	LYR	DESCRIPTION	DATE	DWN APVD
-	-	SEE SHEET 1	-	- -

-	1	1	2280441-1	INSERT, SHEAR	282
-	1	1	2119082-8	CAM, SNAIL, INSULATION ADJUSTMENT	244
-	1	1	2079764-1	WASHER, WAVE SPRING, CREST-TO-CREST	243
-	1	1	2119083-1	RETAINER, INSULATION DIAL	242
-	2	2	7-18023-7	SCR, SKT HD CAP M3 X 4.0	241
-	-	1	2119580-1	MECHANICAL FEED ASSEMBLY	239
-	1	-	2844940-1	AIR FEED MODULE	238
-	1	1	1-356885-4	STOP, SHEAR	237
-	REF	REF	994970-2	COUNTER, MAGNETIC	164
-	1	-	2119641-2	FEED CAM, AIR FEED	151
-	1	1	2168083-8	SCR, SKT HD CAP, RoHS, M4 X 16	144
-	4	4	2168083-9	SCR, SKT HD CAP, RoHS, M4 X 20	143
-	-	1	2119653-2	FEED CAM, POST FEED	142
-	1	1	1-1803583-0	APPLICATOR BASIC ASSEMBLY, SF	141
-	1	1	1803516-1	RAM ASSEMBLY, SF PACIFIC	140
-	1	1	1-22281-8	SPRING, COMPRESSION	121
-	1	1	2119955-1	ASSY, LUBRICATOR, SIDE FEED	113
-	1	1	2844908-1	SCREW, LOCKING	99
-	1	1	2844907-1	POST, LOCKING	98
-	1	1	690438-1	FRONT STRIP GUIDE	96
-	4	4	2168083-1	SCR, SKT HD CAP, RoHS, M3 X 8.0	95
-	1	1	2168083-6	SCR, SKT HD CAP, RoHS, M5 X 65	93
-	1	1	455888-6	SPACER, CRIMPER	82
-	1	1	240641-2	SPACER	81
-	1	1	1803607-3	DOCUMENTATION PACKAGE	71
-	1	1	2119791-9	DEPRESSOR, WIRE	70
-	1	1	2119740-1	TAG, IDENTIFICATION	67
-	2	2	2168078-1	SCREW, DRIVE, RH, RoHS, 2 x .188	66
-	2	2	2-18032-5	SCR, SET, FLT PNT, M5 X 20.0	61
-	1	1	5-18022-5	SCR, HEX HD CAP, M4 X 6.0	59
-	1	1	1338683-1	FEED PAWL	56
-	2	2	2-2168083-5	SCR, SKT HD CAP, RoHS, M4 X 14	53
-	1	2	18023-9	SCR, SKT HD CAP M4 X 6.0	49
-	-	1	2119652-1	FEED CAM, PRE FEED	48
-	1	1	1803602-1	SCR, BHSC, RoHS (M8 X 25)	41
-	1	1	2305692-1	PLATE, REAR STRIP GUIDE	29
-	1	1	455888-5	SPACER, CRIMPER	28
-	2	2	22283-1	SPRING, COMPRESSION	27
-	1	1	356835-1	LEVER, DRAG RELEASE	26
-	1	1	240792-1	DRAG, TERMINAL	25
-	1	1	189124-7	GUIDE, FRONT STRIP	24
-	1	1	980371-4	SCR, SKT HD SHLDR 5.0 DIA X 6.0	23
-	1	1	2168083-2	SCR, SKT HD CAP, RoHS, M4 X 8.0	21
-	3	3	1-18028-2	WASHER, FLAT, REG M4	20
-	1	1	2119533-4	STRIPPER, SIDE FEED	19
-	1	1	690518-1	HOLD DOWN, TERMINAL	18
-	1	1	690463-1	FLOATING SHEAR, REAR	17
-	2	2	1-2168083-1	SCR, SKT HD CAP, RoHS, M3 X 6	16
-	1	1	1-690691-3	PLATE, REAR SHEAR	15
-	1	1	2119862-1	SHEAR HOLDER, REAR	14
-	1	1	2119806-1	INSERT, SHEAR	13
-	2	2	3-22280-3	SPRING, COMPRESSION	12
-	1	1	1-356885-4	STOP, SHEAR	11
-	1	1	2119805-1	SHEAR HOLDER, FRONT	10
-	1	1	1803095-3	FLOATING SHEAR, FRONT	9
1	1	1	9-1803058-8	ANVIL, COMBINATION	8
-	1	1	1-690468-8	DEPRESSOR SHEAR, REAR	6
-	1	1	2119757-1	DEPRESSOR, SHEAR	5
-	1	1	238011-7	BLOCK, CRIMPER SPACER	4
1	1	1	1633966-6	CRIMPER, INSULATION O	3
-	1	1	455888-3	SPACER, CRIMPER	2
1	1	1	1633860-4	CRIMPER, WIRE	1

1  
1  
1  
1

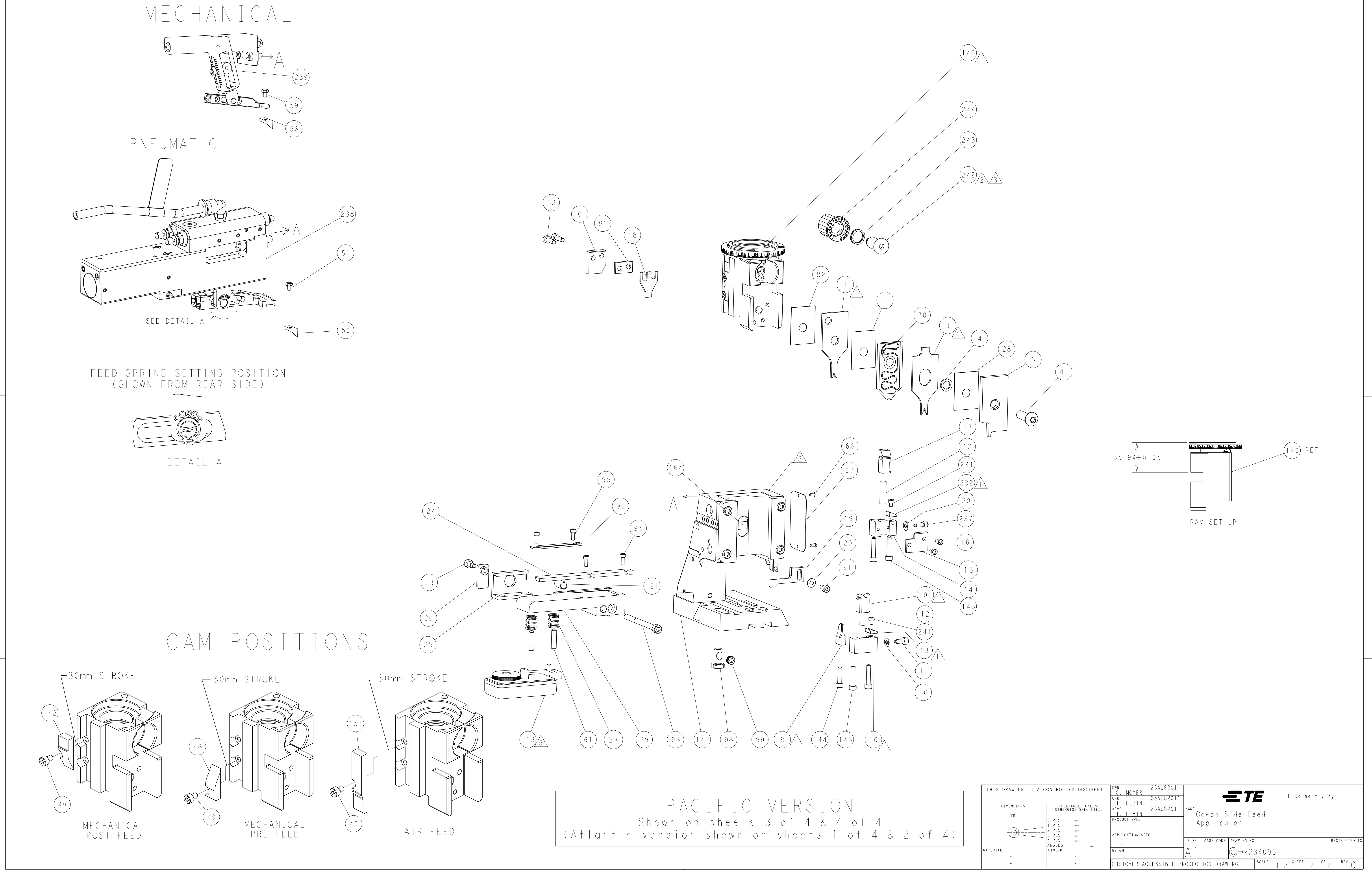
1  
1  
1

1  
1  
1

THIS DRAWING IS A CONTROLLED DOCUMENT.		DWN C. MOYER	25AUG2011	 TE Connectivity	
DIMENSIONS:		CHK T. ELBIN	25AUG2011		
TOLERANCES UNLESS OTHERWISE SPECIFIED:		APVD T. ELBIN	25AUG2011		
mm		PRODUCT SPEC			
		APPLICATION SPEC		NAME Ocean Side Feed Applicator	
MATERIAL		WEIGHT		SIZE A1	CAGE CODE -
-		-		DRAWING NO C=2234095	
-		-		RESTRICTED TO	
-		-		CUSTOMER ACCESSIBLE PRODUCTION DRAWING	
-		-		SCALE 1:2	
-		-		SHEET 3	
-		-		OF 4	
-		-		REV C	

SHEETS 1 & 2 ARE NOT REQUIRED FOR PACIFIC VERSION

REVISIONS				
P	LYR	DESCRIPTION	DATE	APVD
-	-	SEE SHEET 1	-	-



# Mouser Electronics

Authorized Distributor

Click to View Pricing, Inventory, Delivery & Lifecycle Information:

[TE Connectivity:](#)

[2234095-1](#)