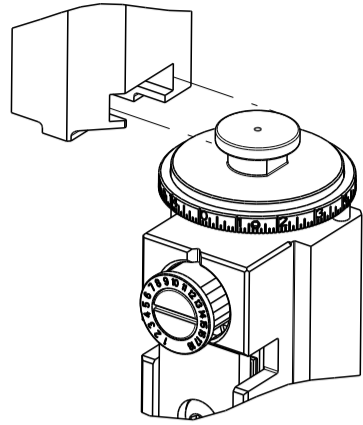
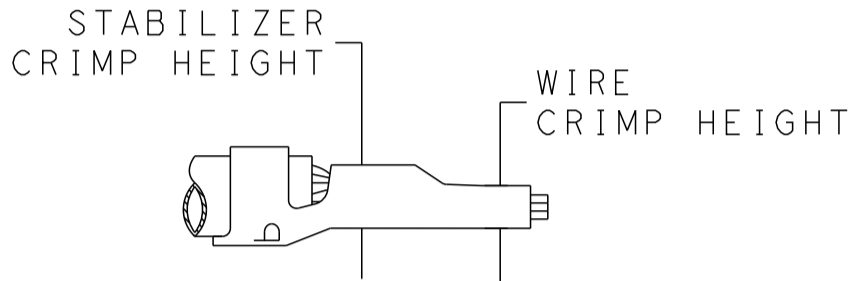


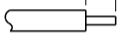


8		7	
THIS DRAWING IS UNPUBLISHED.		RELEASED FOR PUBLICATION	
20		20	
© COPYRIGHT 20 BY TYCO ELECTRONICS CORPORATION. ALL RIGHTS RESERVED.			
PART NUMBER	REVISION	DESCRIPTION	FEED TYPE
2151209-1	C	FINE CRIMP HEIGHT ADJUST	MECHANICAL
2151209-2	D	FINE CRIMP HEIGHT ADJUST	PNEUMATIC
7-2151209-1	C	MECHANICAL AND CRIMP TOOLING KIT	MECHANICAL
7-2151209-2	D	PNEUMATIC AND CRIMP TOOLING KIT	PNEUMATIC
7-2151209-*	B	SEE CRIMP TOOLING KIT BELOW	-

ATLANTIC VERSION TERMINATOR
INTERFACE ADAPTER



APPLICATOR DATA		
CRIMP	SIZE	TYPE
WIRE	1.57 mm [.062]	F
STABILIZER	1.57 mm [.062]	F
INSULATION	2.79 mm [1.10]	F
APPLICATOR INSTRUCTIONS 408-35042		



TERMINAL DATA: TE TERMINAL		TE CRIMP SPECIFICATION	
TERMINAL NAME: MINI AMP-IN			
WIRE STRIP LENGTH 4.45-4.98 mm [.175-.196 IN]			INSULATION DIAMETER RANGE 1.52-2.79 mm [.060-.110 IN]
TERMINAL APPLICATION SPECIFICATION		114-1016	
		-	-
		-	-
TERMINALS APPLIED 			
TE TERMINAL 3-640311-1	TE TERMINAL	TE TERMINAL	TE TERMINAL

PART NO	REV	WIRE SIZE	WIRE CRIMPER	STABILIZER CRIMPER	INSULATION CRIMPER	ANVIL
7-2151209-7	B	18 AWG	7-1803188-7	1-456403-3	2-2119582-1	1-1633916-4
7-2151209-8	B	22-20 AWG	7-1803188-8	1-456403-3	2-2119582-1	1-1633916-4

WIRE SIZE	CRIMP HEIGHT mm [INCH]	WIRE CRIMPER PART NUMBER	STABLIZER CRIMPER HEIGHT mm [INCH]	STABILIZER CRIMPER PART NUMBER	CRIMP HEIGHT REFERENCE SETTING
18 AWG	0.94+/-0.05 [.037+/-0.002]	7-1803188-7	1.40+/-0.05 [.055+/-0.002]	1-456403-3	5.0
22-20	0.76+/-0.05 [.030+/-0.002]	7-1803188-8			5.0



- 1 RECOMMENDED SPARE PARTS
- 2 REFER TO SUPPLIED INSTRUCTION SHEET FOR CLEANING, LUBRICATION AND STORAGE OF APPLICATOR.
- 3 APPLY PART NUMBER 2-23419-6 LOCTITE TO THREADS OF ITEM 242.
- 4 CRIMP HEIGHT REFERENCE SETTING WAS THE SETTING USED WHEN THE APPLICATOR WAS QUALIFIED AT THE FACTORY. ADJUSTMENT MAY BE NECESSARY WHEN RUNNING APPLICATOR IN THE FIELD.
5. UNLESS SPECIFIED OTHERWISE TORQUE VALUES SHALL BE USED PER DOCUMENT, 101-35000.
- 6 ITEM 1 TO BE USED WITH 18 AWG ONLY. ITEM TO BE SHIPPED WITH APPLICATOR.
- 7 ITEM 253 TO BE USED WITH 22-20 AWG ONLY. ITEM TO BE SHIPPED WITH APPLICATOR.
- 8 ITEM 19 MUST BE POSITIONED BETWEEN ITEMS 1 OR 253 AND ITEM 178.
- 9 WHEN RUNNING APPLICATOR IN BENCH MACHINE WIRE MUST BE PLACED IN WIRE BARREL IN ORDER TO ACHIEVE PROPER BRUSH LENGTH.

*WARNING
ON INSTALLATION, SET WIRE DISC TO CRIMP HEIGHT REFERENCE SETTING FOR LARGEST WIRE SIZE. CRIMP HEIGHT REFERENCE SETTINGS GREATER THAN THE VALUE SHOWN MAY CAUSE DAMAGE TO THE CRIMP TOOLING. REFER TO THE INSTRUCTION SHEET FOR PROPER SETUP AND ADJUSTMENTS.

ATLANTIC VERSION
Shown on sheets 1 of 4 & 2 of 4
(Pacific version shown on sheets 3 of 4 & 4 of 4)

2			1					
LOC	DIST	REVISIONS						
A	66	P	LTR	DESCRIPTION	DATE	DWN	APVD	
		A		RELEASED	08 JUN 2016	RK	GB	
		B		ECR-16-011873	18 AUG 2016	MZ	JDG	
		C		ECR-18-016121	11 OCT 2018	FL	TE	
		D		ECR-21-117796	19 OCT 2021	LG	TE	

7	1	1	-	1	1	1	1	7-1803188-8	CRIMPER, WIRE	253
-	-	1	-	1	-			2119641-1	FEED CAM, AIR FEED	248
-	-	1	1	1	1			2119082-4	CAM, SNAIL, INSULATION ADJUSTMENT	244
-	-	1	1	1	1			2079764-1	WASHER, WAVE SPRING, CREST-TO-CREST	243
3	-	-	1	1	1	1		2119083-1	RETAINER, INSULATION DIAL	242
-	-	1	1	1	1			7-18023-7	SCR, SKT HD CAP M3 X 4.0	241
-	-	-	1	-	1			2119580-1	MECHANICAL FEED ASSEMBLY	239
-	-	1	-	1	-			2844940-1	AIR FEED MODULE	238
1	1	2	2	1	1			1-456403-3	CRIMPER, WIRE PREMIUM	178
-	-	REF	REF	REF	REF			994970-2	COUNTER, MAGNETIC	164
-	-	1	1	1	1			455888-8	SPACER, CRIMPER	128
-	-	1	1	1	1			2844908-1	SCREW, LOCKING	99
-	-	1	1	1	1			2844907-1	POST, LOCKING	98
-	-	1	1	1	1			455888-4	SPACER, CRIMPER	82
-	-	1	1	1	1			1803607-3	DOCUMENTATION PACKAGE	71
-	-	1	1	1	1			2119740-1	TAG, IDENTIFICATION	67
-	-	2	2	2	2			2168078-1	SCREW, DRIVE, RH, RoHS, 2 x .188	66
-	-	1	1	1	1			2168083-2	SCR, SKT HD CAP, RoHS, M4 X 8.0	60
-	-	1	1	1	1			5-18022-5	SCR, HEX HD CAP, M4 X 6.0	59
-	-	1	1	1	1			1338685-1	PAWL, FEED	56
-	-	2	2	2	2			2168083-3	SCR, SKT HD CAP, RoHS, M4 X 12.0	54
-	-	1	2	1	2			18023-9	SCR, SKT HD CAP M4 X 6.0	49
-	-	-	1	-	1			2119652-1	FEED CAM, PRE FEED	48
-	-	-	1	-	1			2119653-1	FEED CAM, POST FEED	47
-	-	1	1	1	1			1803583-9	APPLICATOR BASIC ASSEMBLY, SF	46
-	-	1	1	1	1			1803515-1	RAM ASSEMBLY, SF ATLANTIC	44
-	-	1	1	1	1			1803602-1	SCR, BHSC, RoHS (M8 X 25)	41
-	-	2	2	2	2			2079383-5	SCR, BHSC, RoHS (M4 X 20)	33
-	-	2	2	2	2			2-2844962-6	SPACER, CYLINDRICAL, STRIP GUIDE	30
-	-	1	1	1	1			2844992-1	ASSEMBLY, STRIP GUIDE	29
-	-	1	1	1	1			455888-3	SPACER, CRIMPER	28
-	-	1	1	1	1			1320928-2	STRIP GUIDE	24
-	-	1	1	1	1			2168083-2	SCR, SKT HD CAP, RoHS, M4 X 8.0	21
-	-	2	2	2	2			1-18028-2	WASHER, FLAT, REG M4	20
8	-	1	1	1	1			2119533-4	STRIPPER, SIDE FEED	19
1	-	1	1	1	1			2119806-1	INSERT, SHEAR	13
-	-	1	1	1	1			3-22280-3	SPRING, COMPRESSION	12
-	-	1	1	1	1			1-356885-4	STOP, SHEAR	11
1	-	1	1	1	1			2119805-1	SHEAR HOLDER, FRONT	10
1	-	1	1	1	1			1803095-1	FLOATING SHEAR, FRONT	9
1	1	1	2	2	1	1		1-1633916-4	ANVIL, COMBINATION	8
-	-	-	-	-	-			-	-	7
-	-	-	-	-	-			-	-	6
-	-	1	1	1	1			2119757-8	DEPRESSOR, SHEAR	5
-	-	1	1	1	1			2-238011-2	BLOCK, CRIMPER SPACER	4
1	1	1	2	2	1	1		2-2119582-1	CRIMPER, INSULATION F PREMIUM	3
-	-	-	-	-	-			-	-	2
6	1	-	1	2	2	1		7-1803188-7	CRIMPER, WIRE	1

THIS DRAWING IS UNPUBLISHED. IT IS SUBJECT TO CHANGE WITHOUT NOTICE. THE USER SHALL BE CONTACTED FOR THE LATEST EDITION.		DWN M. RILEY 09-JUN-16	STE TE Connectivity Harrisburg, PA 17105-3608	
CHK R. KNEPPER 09-JUN-16		NAME	Ocean Side Feed Applicator	
APVD G. BAILEY 09-JUN-16		PRODUCT SPEC	-	
APPLICATION SPEC		SIZE	CAGE CODE	DRAWING NO
MATERIAL		WEIGHT	00779	2151209
Customer Accessible Production Drawing		SCALE	1:2	SHEET 1 OF 4
		REV	D	

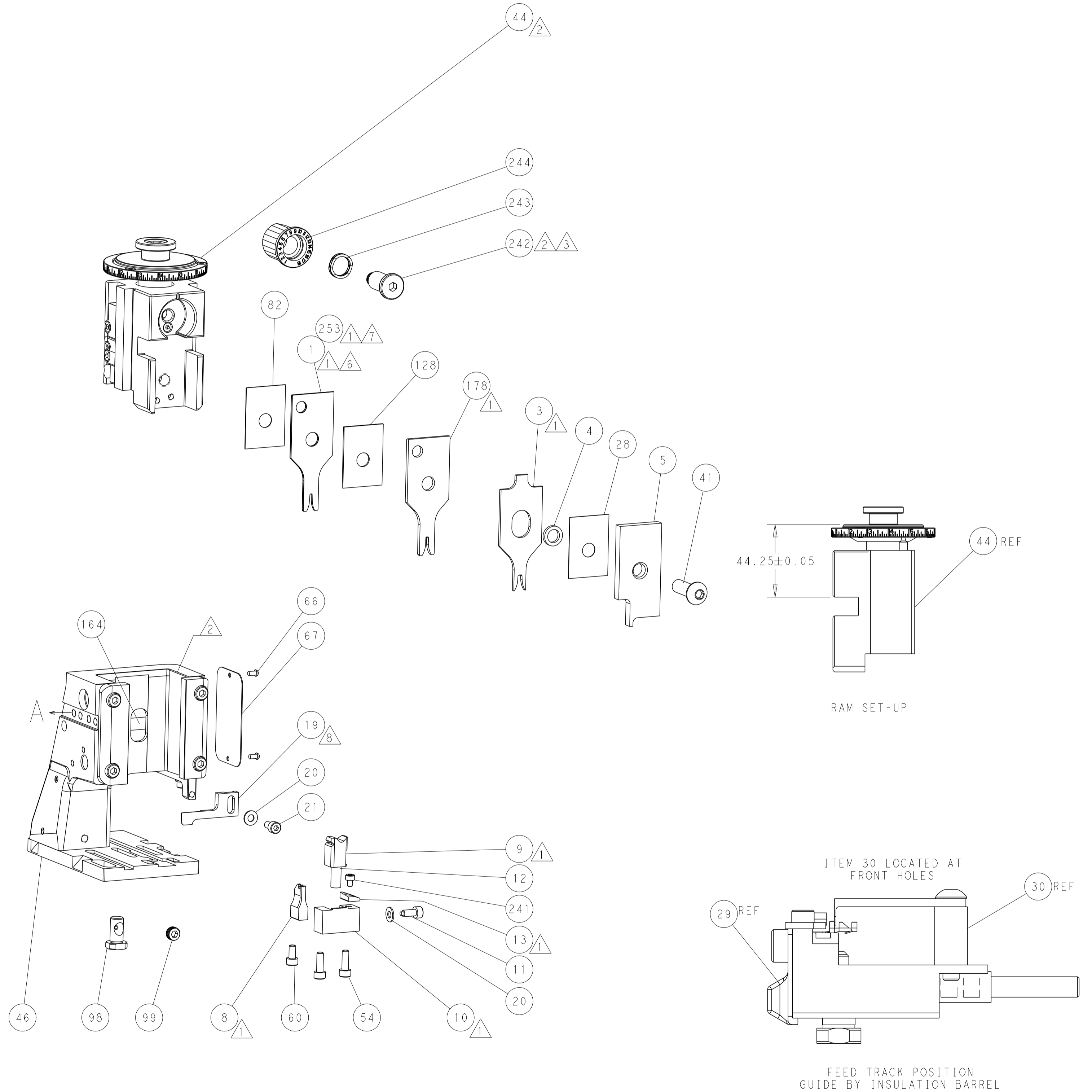
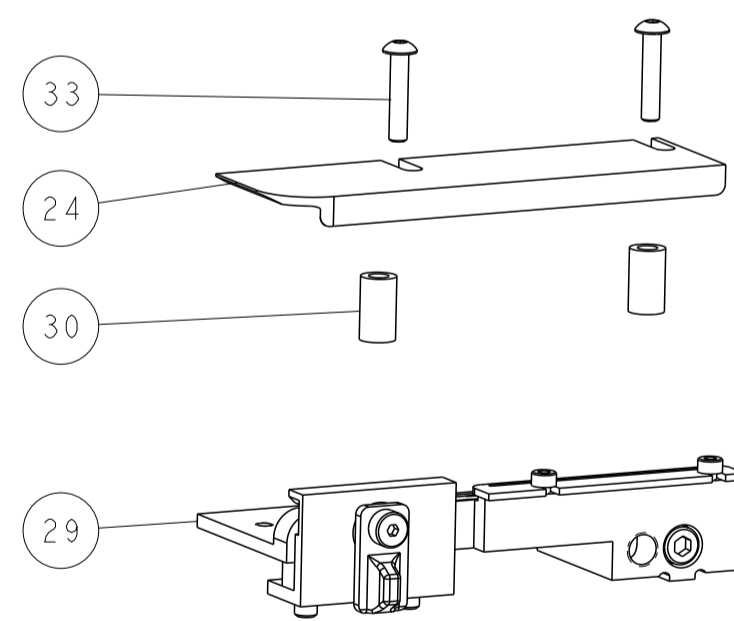
SHEETS 3 & 4 ARE NOT REQUIRED FOR ATLANTIC VERSION

Diagram illustrating the front view of the machine assembly, showing the main body, handle, and various components labeled with callouts:

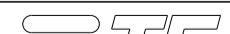
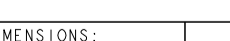
- 238: Callout for the main body/handle assembly.
- 59: Callout for a small component (likely a pin or screw).
- 56: Callout for a small component (likely a pin or screw).
- A: Callout for the front panel/cover.

SEE DETAIL A

DETAIL A

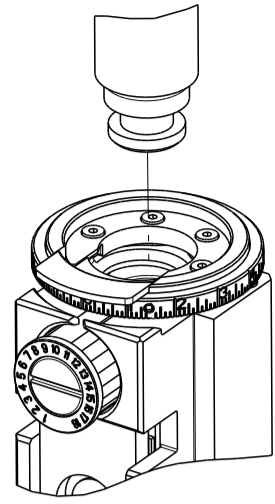


Shown on sheets 1 of 4 & 2 of 4
(Pacific version shown on sheets 3 of 4 & 4 of 4)

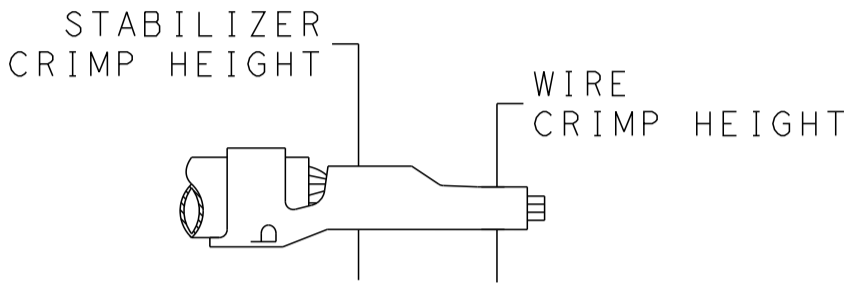
THIS DRAWING IS A CONTROLLED DOCUMENT FOR TWO ELECTRONICS CORPORATION IT IS SUBJECT TO THE CONTROL SYSTEMS OF TWO ELECTRONICS CORPORATION SHOULD BE CONTACTED FOR THE LATEST REVISION.		DWN 09-JUN-16 CHK M. RILEY APVD G. KNEPPER G. BAILEY 09-JUN-16		 TE Connectivity Harrisburg, PA 17105-3608	
DIMENSIONS: mm 		TOLERANCES UNLESS OTHERWISE SPECIFIED: 0 PLC ± 1 PLC ± 2 PLC ± 3 PLC ± 4 PLC ± ANGLES ± FINISH		NAME Ocean Side Feed Applicator	
MATERIAL -		WEIGHT -		SIZE A1	
		CAGE CODE 00779		DRAWING NO C-2151209	
		RESTRICTED TO -		SCALE 1:2	
		SHEET 2		OF 4	
		REV D			
Customer Accessible Production Drawing					




8		7	
THIS DRAWING IS UNPUBLISHED.		RELEASED FOR PUBLICATION 20	
© COPYRIGHT 20 BY TYCO ELECTRONICS CORPORATION. ALL RIGHTS RESERVED.			
PART NUMBER	REVISION	DESCRIPTION	FEED TYPE
2-2151209-1	C	FINE CRIMP HEIGHT ADJUST	MECHANICAL
2-2151209-2	D	FINE CRIMP HEIGHT ADJUST	PNEUMATIC
7-2151209-*	B	SEE CRIMP TOOLING KIT BELOW	-

PACIFIC VERSION TERMINATOR
INTERFACE ADAPTER



APPLICATOR DATA		
CRIMP	SIZE	TYPE
WIRE	1.57 mm [.062]	F
STABILIZER	1.57 mm [.062]	F
INSULATION	2.79 mm [.110]	F
APPLICATOR INSTRUCTIONS 408-35042		



TERMINAL DATA: TE TERMINAL		TE CRIMP SPECIFICATION	
TERMINAL NAME: MINI AMP-IN			
WIRE STRIP LENGTH 4.45-4.98 mm [.175-.196 IN]			INSULATION DIAMETER RANGE Ø 1.52-2.79 mm [.060-.110 IN]
TERMINAL APPLICATION SPECIFICATION 		114-1016	-
TERMINALS APPLIED		-	-
TERMINALS APPLIED 			
TE TERMINAL 3-640311-1	TE TERMINAL	TE TERMINAL	TE TERMINAL

PART NO	REV	WIRE SIZE	WIRE CRIMPER	STABILIZER CRIMPER	INSULATION CRIMPER	ANVIL
7-2151209-7	B	18 AWG	7-1803188-7	1-456403-3	2-2119582-1	1-1633916-4
7-2151209-8	B	22-20 AWG	7-1803188-8	1-456403-3	2-2119582-1	1-1633916-4

WIRE SIZE	CRIMP HEIGHT mm [INCH]	WIRE CRIMPER PART NUMBER	STABLIZER CRIMPER HEIGHT mm [INCH]	STABILIZER CRIMPER PART NUMBER	CRIMP HEIGHT REFERENCE SETTING
18 AWG	0.94+/-0.05 [.037+/-0.002]	7-1803188-7	1.40+/-0.05 [.055+/-0.002]	1-456403-3	5.0
22-20	0.76+/-0.05 [.030+/-0.002]	7-1803188-8			5.0



- 1 RECOMMENDED SPARE PARTS
- 2 REFER TO SUPPLIED INSTRUCTION SHEET FOR CLEANING, LUBRICATION AND STORAGE OF APPLICATOR.
- 3 APPLY PART NUMBER 2-23419-6 LOCTITE TO THREADS OF ITEM 242.
- 4 CRIMP HEIGHT REFERENCE SETTING WAS THE SETTING USED WHEN THE APPLICATOR WAS QUALIFIED AT THE FACTORY. ADJUSTMENT MAY BE NECESSARY WHEN RUNNING APPLICATOR IN THE FIELD.
5. UNLESS SPECIFIED OTHERWISE TORQUE VALUES SHALL BE USED PER DOCUMENT, 101-35000.
- 6 ITEM 1 TO BE USED WITH 18 AWG ONLY. ITEM TO BE SHIPPED WITH APPLICATOR.
- 7 ITEM 253 TO BE USED WITH 22-20 AWG ONLY. ITEM TO BE SHIPPED WITH APPLICATOR.
- 8 ITEM 19 MUST BE POSITIONED BETWEEN ITEMS 1 OR 253 AND ITEM 178.
- 9 WHEN RUNNING APPLICATOR IN BENCH MACHINE WIRE MUST BE PLACED IN WIRE BARREL IN ORDER TO ACHIEVE PROPER BRUSH LENGTH.

*WARNING
ON INSTALLATION, SET WIRE DISC TO CRIMP HEIGHT REFERENCE SETTING FOR LARGEST WIRE SIZE. CRIMP HEIGHT REFERENCE SETTINGS GREATER THAN THE VALUE SHOWN MAY CAUSE DAMAGE TO THE CRIMP TOOLING, REFER TO THE INSTRUCTION SHEET FOR PROPER SETUP AND ADJUSTMENTS.

PACIFIC VERSION
Shown on sheets 3 of 4 & 4 of 4
(Atlantic version shown on sheets 1 of 4 & 2 of 4)

LOC	DIST	REVISONS				
		P	LTR	DESCRIPTION	DATE	OWN
A	66	-	-	SEE SHEET 1	-	-

1	-	1	1	7-1803188-8	CRIMPER, WIRE	253
-	-	1	1	2119082-4	CAM, SNAIL, INSULATION ADJUSTMENT	244
-	-	1	1	2079764-1	WASHER, WAVE SPRING, CREST-TO-CREST	243
3	-	1	1	2119083-1	RETAINER, INSULATION DIAL	242
-	-	1	1	7-18023-7	SCR, SKT HD CAP M3 X 4.0	241
-	-	-	1	2119580-1	MECHANICAL FEED ASSEMBLY	239
-	-	1	-	2844940-1	AIR FEED MODULE	238
1	1	1	1	1-456403-3	CRIMPER, WIRE PREMIUM	178
-	-	REF	REF	994970-2	COUNTER, MAGNETIC	164
-	-	1	-	2119641-2	FEED CAM, AIR FEED	151
-	-	1	1	2168083-8	SCR, SKT HD CAP, RoHS, M4 X 16	144
-	-	2	2	2168083-9	SCR, SKT HD CAP, RoHS, M4 X 20	143
-	-	-	1	2119653-2	FEED CAM, POST FEED	142
-	-	1	1	1-1803583-0	APPLICATOR BASIC ASSEMBLY, SF	141
-	-	1	1	1803516-1	RAM ASSEMBLY, SF PACIFIC	140
-	-	1	1	455888-8	SPACER, CRIMPER	128
-	-	1	1	2844908-1	SCREW, LOCKING	99
-	-	1	1	2844907-1	POST, LOCKING	98
-	-	1	1	455888-4	SPACER, CRIMPER	82
-	-	1	1	1803607-3	DOCUMENTATION PACKAGE	71
-	-	1	1	2119740-1	TAG, IDENTIFICATION	67
-	-	2	2	2168078-1	SCREW, DRIVE, RH, RoHS, 2 x .188	66
-	-	1	1	5-18022-5	SCR, HEX HD CAP, M4 X 6.0	59
-	-	1	1	1338685-1	PAWL, FEED	56
-	-	1	2	18023-9	SCR, SKT HD CAP M4 X 6.0	49
-	-	-	1	2119652-1	FEED CAM, PRE FEED	48
-	-	1	1	1803602-1	SCR, BHSC, RoHS (M8 X 25)	41
-	-	2	2	2079383-5	SCR, BHSC, RoHS (M4 X 20)	33
-	-	2	2	2-2844962-6	SPACER, CYLINDRICAL, STRIP GUIDE	30
-	-	1	1	2844992-1	ASSEMBLY, STRIP GUIDE	29
-	-	1	1	455888-3	SPACER, CRIMPER	28
-	-	1	1	1320928-2	STRIP GUIDE	24
-	-	1	1	2168083-2	SCR, SKT HD CAP, RoHS, M4 X 8.0	21
-	-	2	2	1-18028-2	WASHER, FLAT, REG M4	20
8	-	1	1	2119533-4	STRIPPER, SIDE FEED	19
1	-	1	1	2119806-1	INSERT, SHEAR	13
-	-	1	1	3-22280-3	SPRING, COMPRESSION	12
-	-	1	1	1-356885-4	STOP, SHEAR	11
1	-	1	1	2119805-1	SHEAR HOLDER, FRONT	10
1	-	1	1	1803095-1	FLOATING SHEAR, FRONT	9
1	1	1	1	1-1633916-4	ANVIL, COMBINATION	8
-	-	-	-	-	-	7
-	-	-	-	-	-	6
-	-	1	1	2119757-8	DEPRESSOR, SHEAR	5
-	-	1	1	2-238011-2	BLOCK, CRIMPER SPACER	4
1	1	1	1	2-2119582-1	CRIMPER, INSULATION F PREMIUM	3
-	-	-	-	-	-	2
6	1	1	1	7-1803188-7	CRIMPER, WIRE	1
-78	-77	-22	-21	PART NO	DESCRIPTION	ITEM NO

THIS DRAWING IS UNPUBLISHED. IT IS SUBJECT TO CHANGE WITHOUT NOTICE. THE USER SHALL BE RESPONSIBLE FOR OBTAINING THE LATEST EDITION.		OWN M. RILEY CHK R. KNEPPER APVD G. BAILEY	09-JUN-16 09-JUN-16 09-JUN-16	TE Connectivity Harrisburg, PA 17105-3608	
DIMENSIONS: mm		TOLERANCES UNLESS OTHERWISE SPECIFIED: 0 PLC ± 1 PLC ± 2 PLC ± 3 PLC ± 4 PLC ± ANGLES ± FINISH		NAME Ocean Side Feed Applicator	
MATERIAL		WEIGHT		SIZE A	
-		-		CAGE CODE 00779	
-		-		DRAWING NO C=2151209	
-		-		RESTRICTED TO	
-		-		Customer Accessible Production Drawing	
-		-		SCALE 1:2	
-		-		SHEET 3	
-		-		OF 4	
-		-		REV D	

LOC		DIST		REVISIONS				
A	66	P	LYR	DESCRIPTION	DATE	DWN	APVD	
		-		SEE SHEET 1	-	-	-	

D

C

B

A

D

C

B

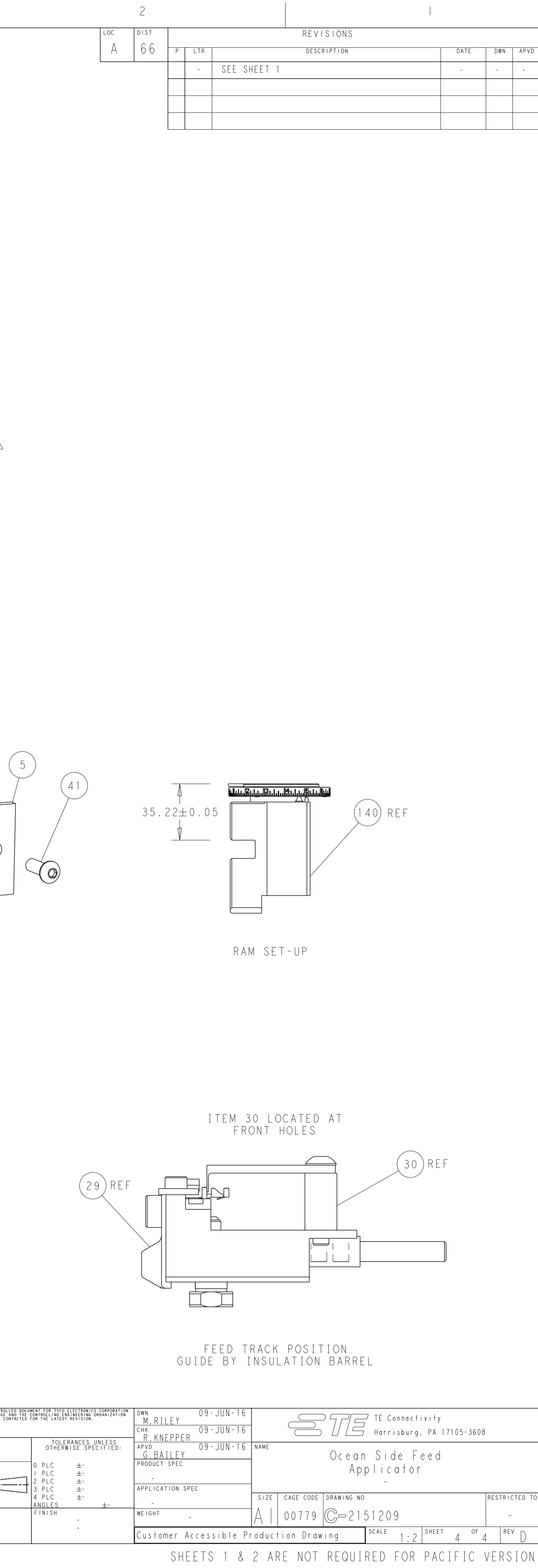
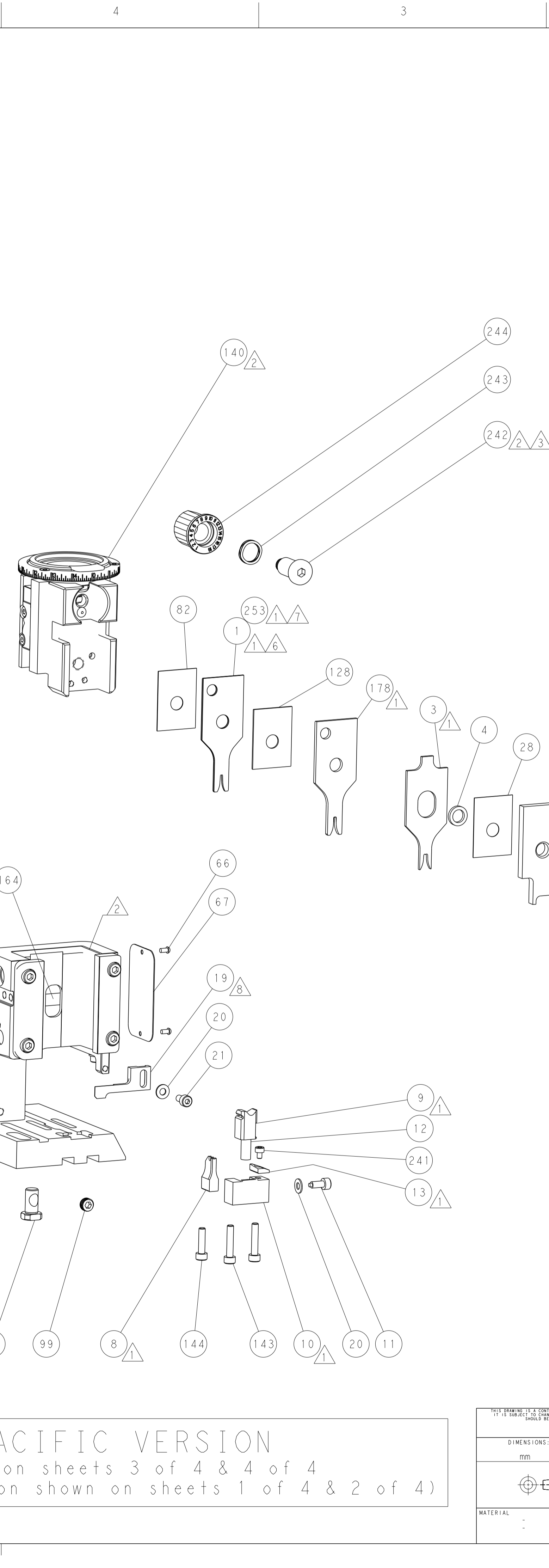
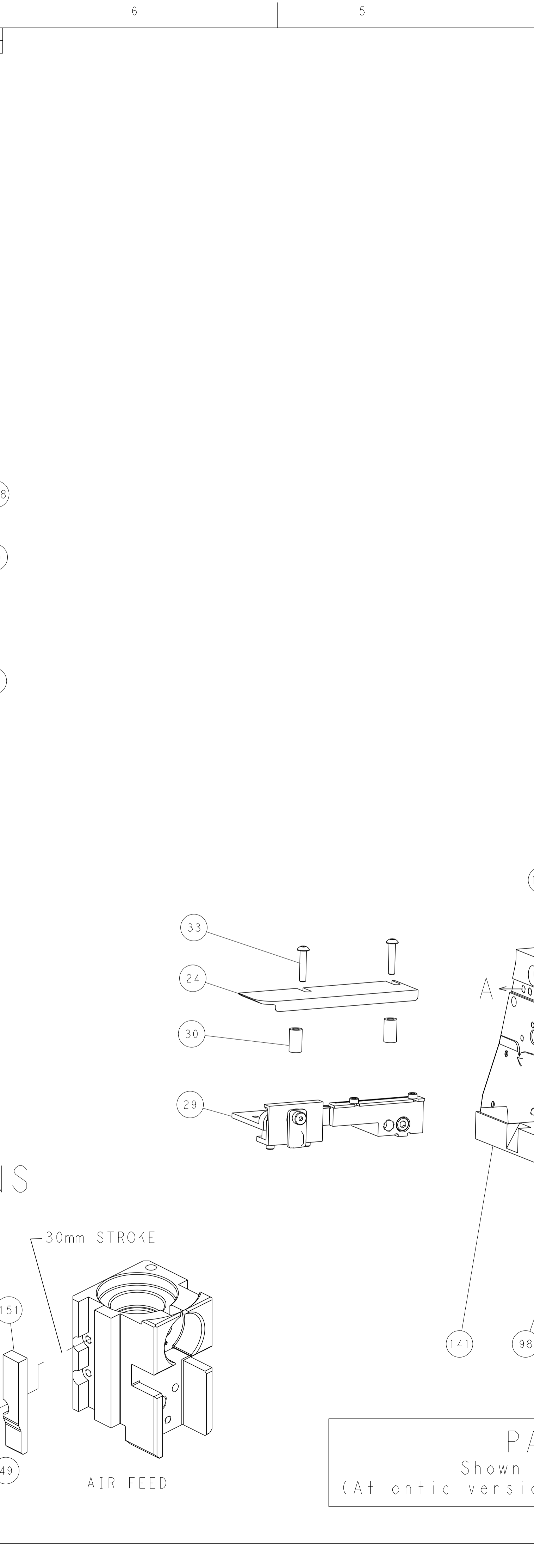
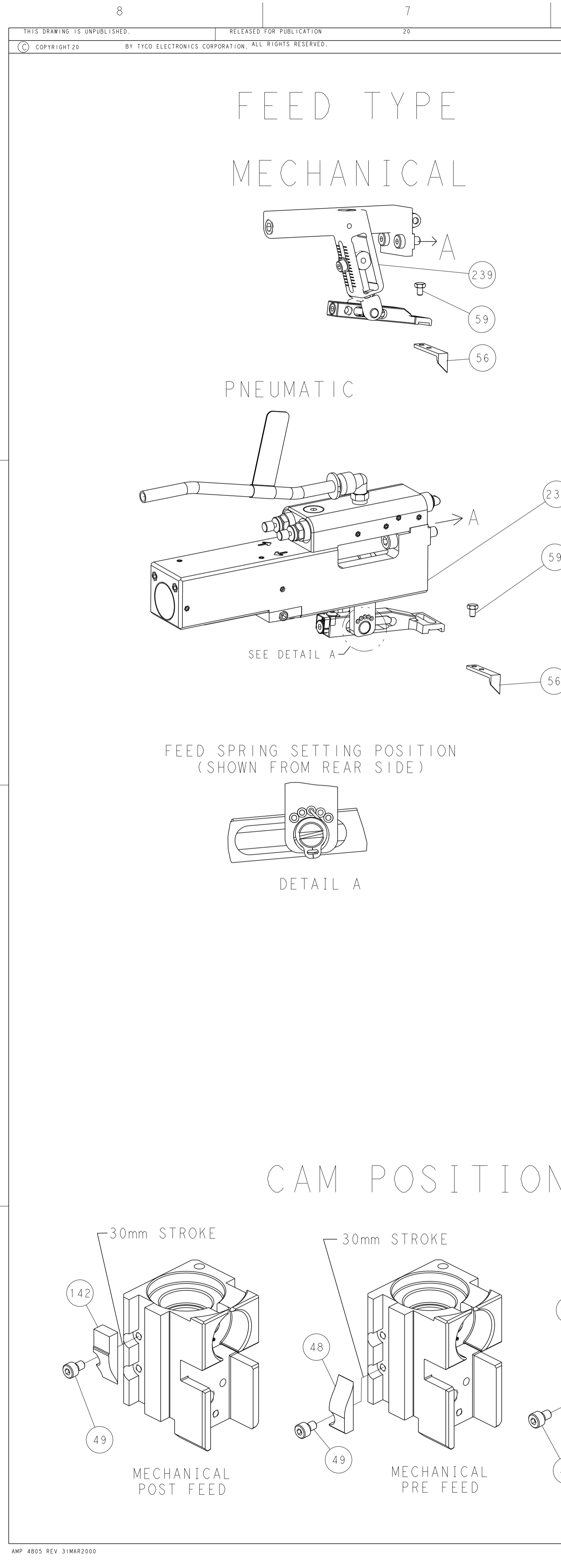
A

D

C

B

A



PACIFIC VERSION

Shown on sheets 3 of 4 & 4 of 4
(Atlantic version shown on sheets 1 of 4 & 2 of 4)

THIS DRAWING IS UNPUBLISHED. IT IS SUBJECT TO CHANGE WITHOUT NOTICE. THE USER SHALL BE RESPONSIBLE FOR THE LATEST VERSION.		DWN M. RILEY 09-JUN-16	TE Connectivity Harrisburg, PA 17105-3608	
DIMENSIONS: mm		CHK R. KNEPPER 09-JUN-16	NAME Ocean Side Feed Applicator	
TOLERANCES UNLESS OTHERWISE SPECIFIED:		APVD S. BAILEY 09-JUN-16	SIZE A1	
0 PLC ±.005		PRODUCT SPEC	CAGE CODE 00779	
1 PLC ±.005		APPLICATION SPEC	DRAWING NO C=2151209	
2 PLC ±.005		WEIGHT	RESTRICTED TO	
3 PLC ±.005		Customer Accessible Production Drawing	SCALE 1:2	
4 PLC ±.005			SHEET 4 OF 4	
ANGLES FINISH			REV D	

SHEETS 1 & 2 ARE NOT REQUIRED FOR PACIFIC VERSION

Mouser Electronics

Authorized Distributor

Click to View Pricing, Inventory, Delivery & Lifecycle Information:

[TE Connectivity:](#)

[7-2151209-1](#)